




HAZEL NATIONAL LANDING

SPRC #2 PRESENTATION - LANDSCAPE
03.01.2021

 **WALSH COLUCCI
LUBELEY & WALSH**
WALSH, COLUCCI, LUBELEY AND WALSH
ZONING ATTORNEY

 **ZMA DEVELOPMENT, LP**
DEVELOPER

 **b KL**
bKL ARCHITECTURE, LLC
ARCHITECT

 **LSG LANDSCAPE ARCHITECTURE**
LANDSCAPE ARCHITECT

 **christopher
consultants**
CHRISTOPHER CONSULTANTS
CIVIL ENGINEER

 **WELLS + ASSOCIATES**
WELLS + ASSOCIATES
TRANSPORTATION CONSULTANT

AGENDA

1. ARCHITECTURE & DESIGN

2. TRANSPORTATION

3. LANDSCAPE & OPEN SPACE DESIGN

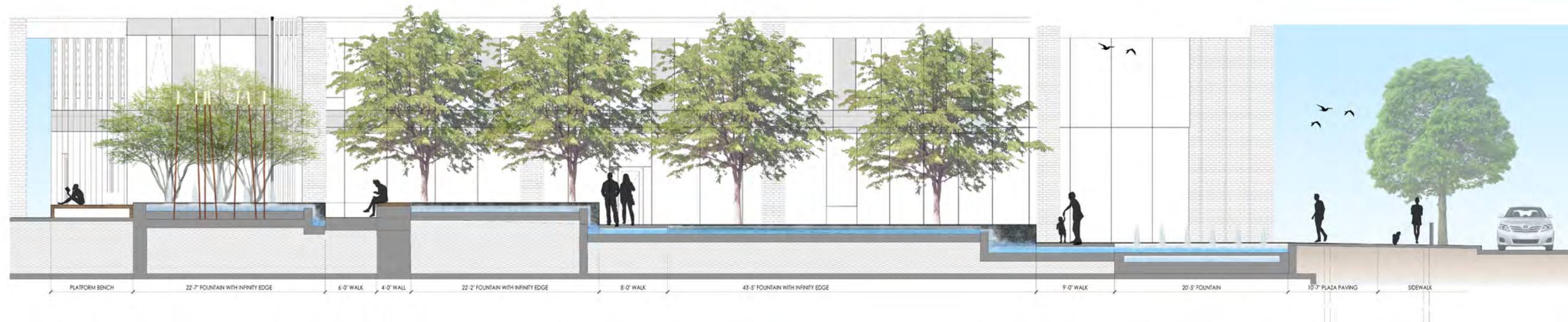
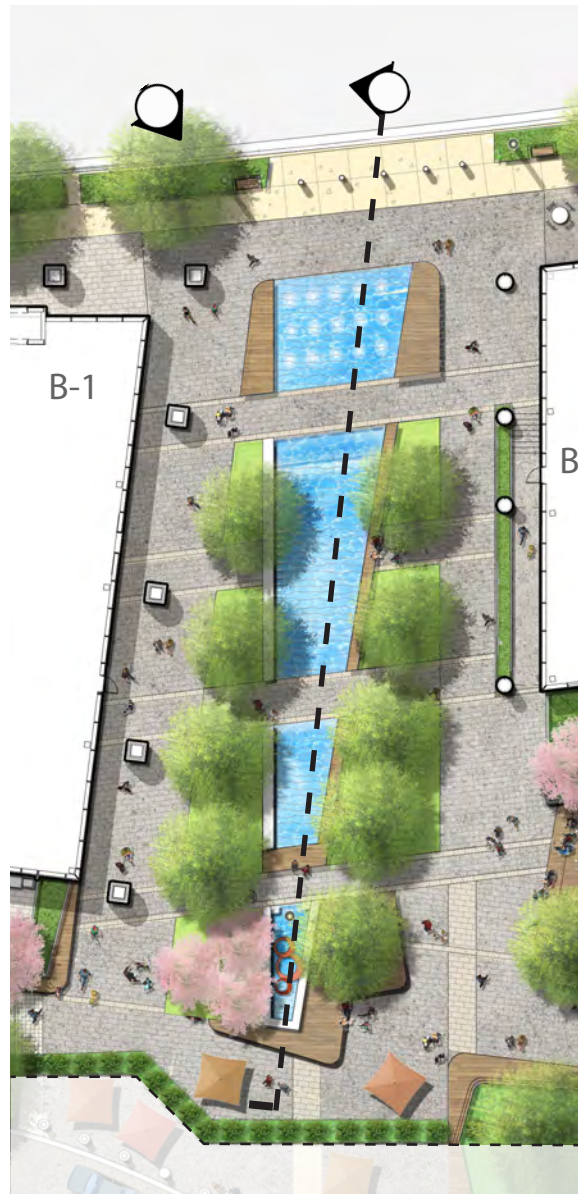
- OVERALL SITE DESIGN
- NORTH PARK PLAZA
- STREETScape DESIGN
- LANDSCAPE MATERIALS
- PRIVATE VS. PUBLIC OPEN SPACE



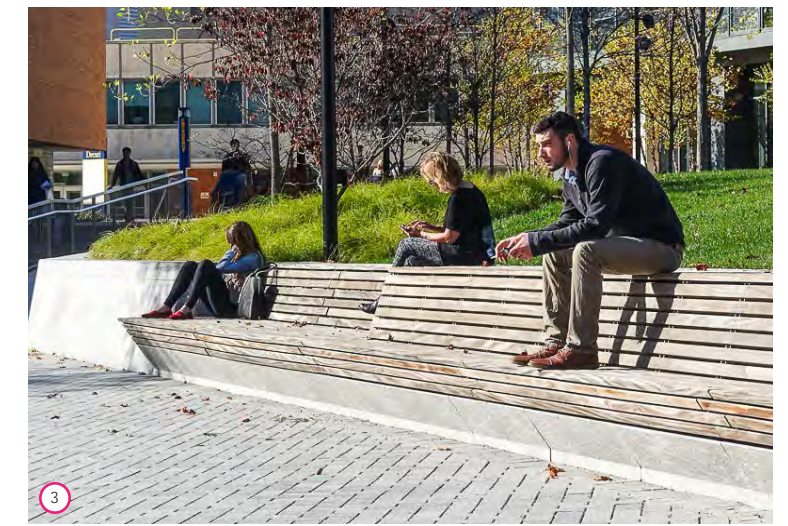
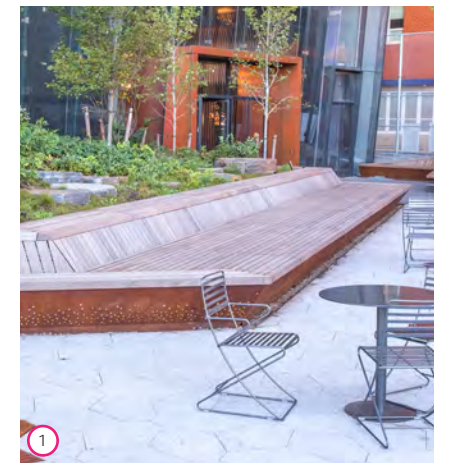
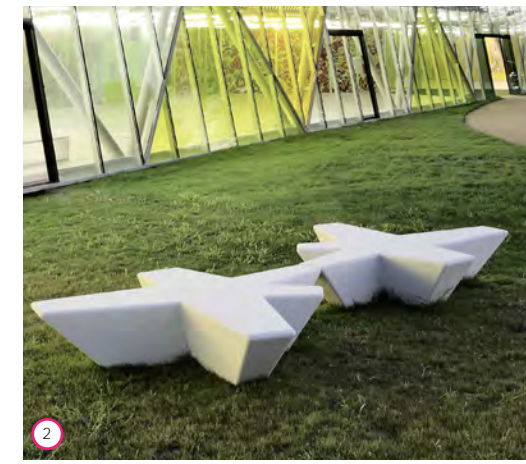
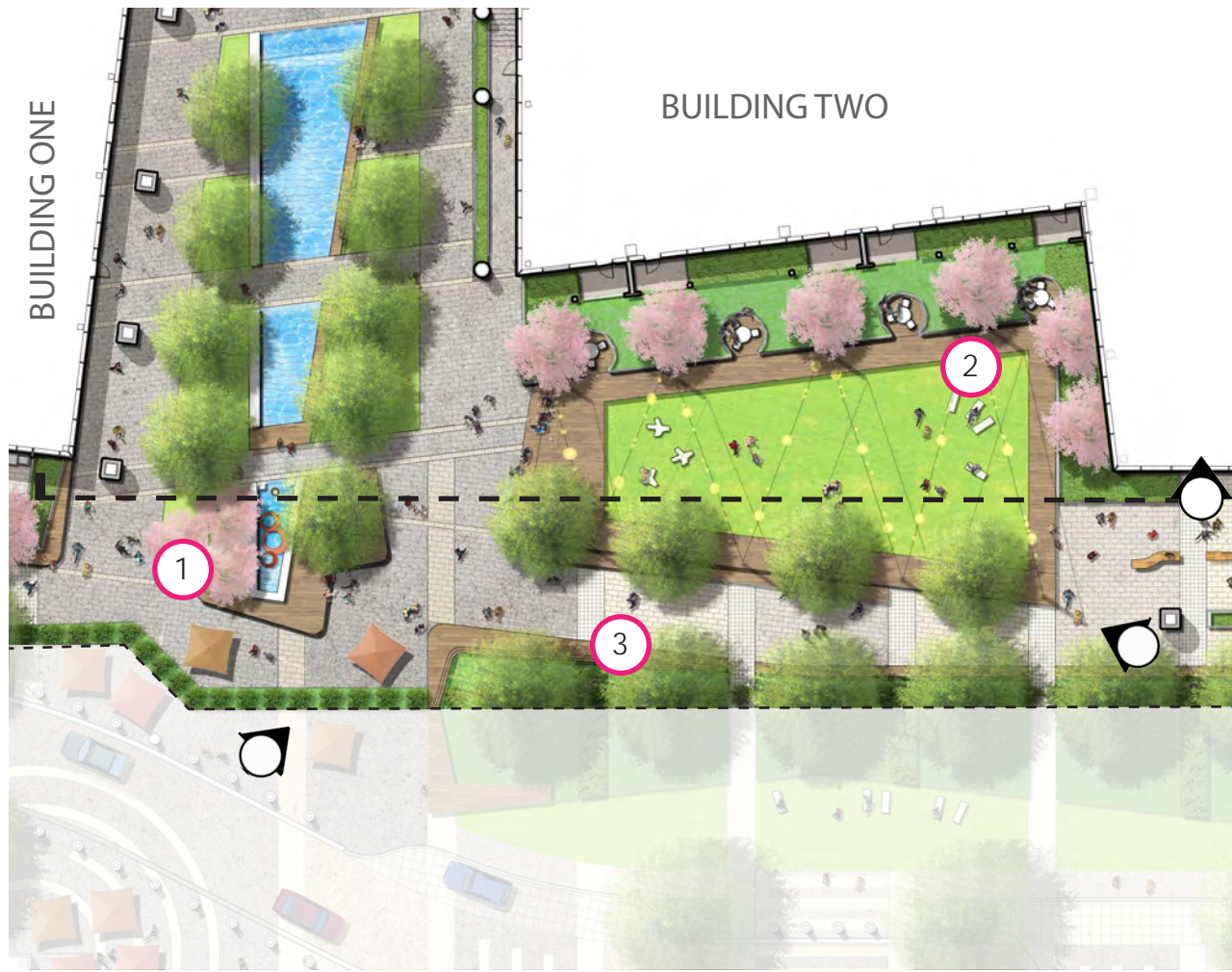


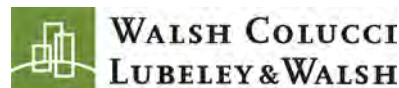












NORTH PARK PLAZA





WALSH COLUCCI
LUBELEY & WALSH



NORTH PARK PLAZA & GRAND LAWN



WELLS + ASSOCIATES



christopher
consultants



© 2020 bKL Architecture LLC





**WALSH COLUCCI
LUBELEY & WALSH**



33RD STREET & BUILDING OVERHANG



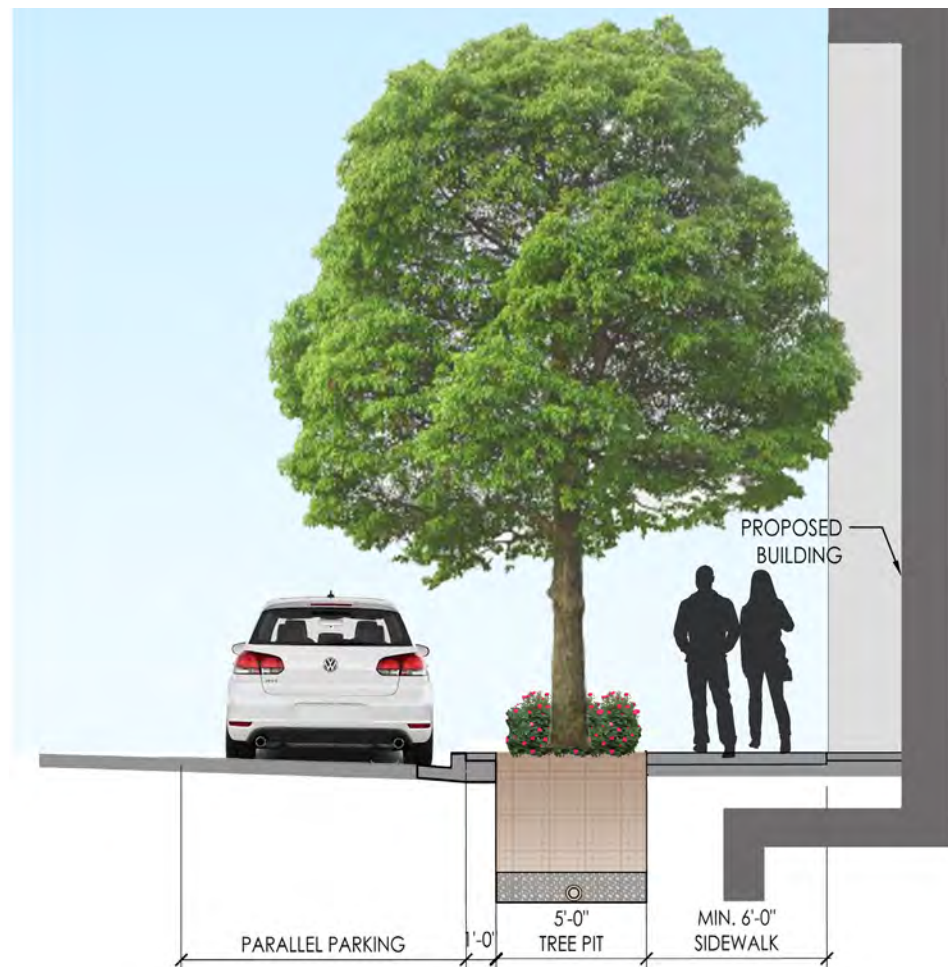
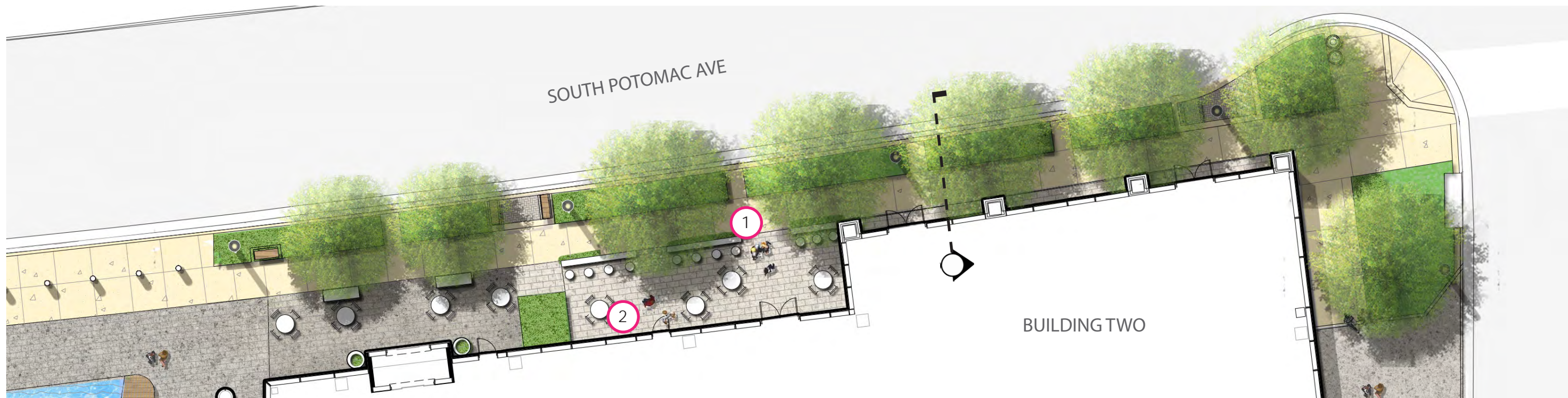
WELLS + ASSOCIATES

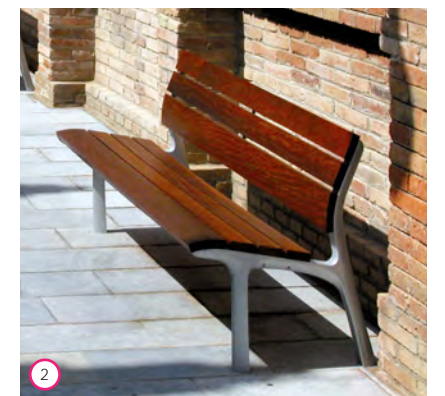
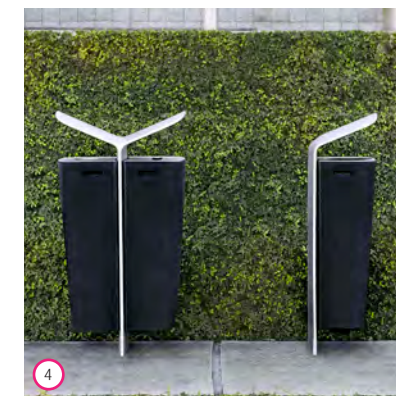


**christopher
consultants**



© 2020 bKL Architecture LLC







WALSH COLUCCI
LUBELEY & WALSH



STREETScape - POTOMAC AVE AT BUILDING ONE



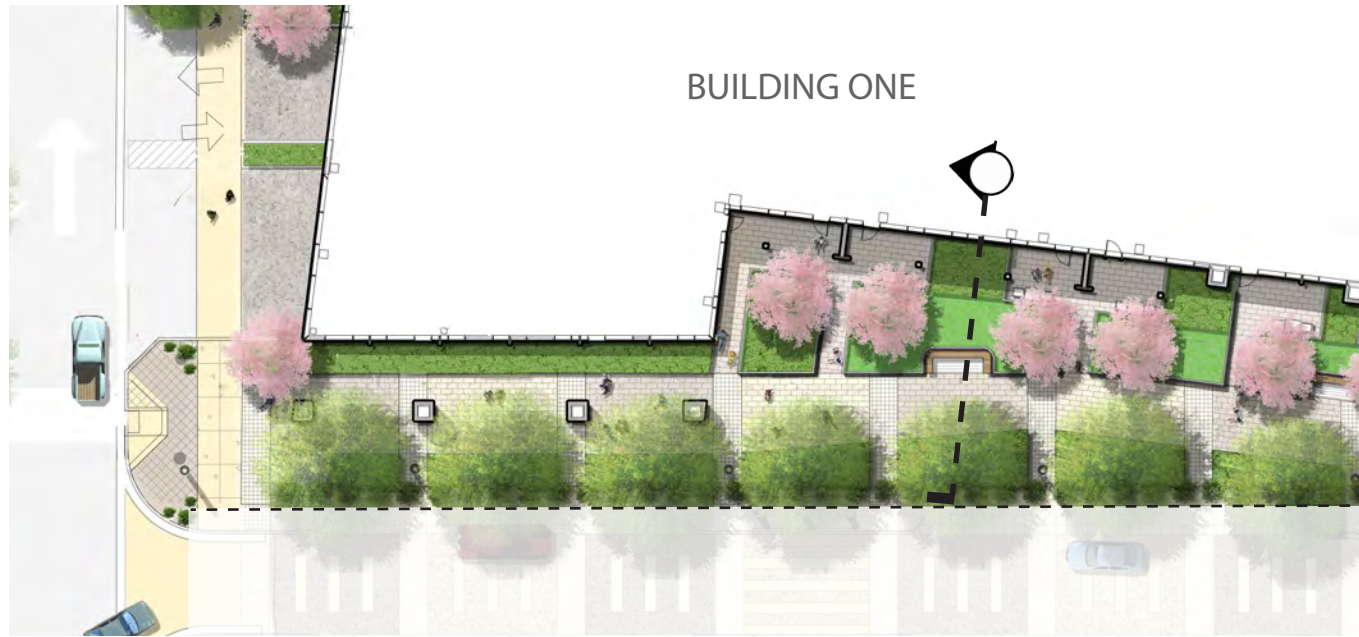
WELLS + ASSOCIATES



christopher
consultants

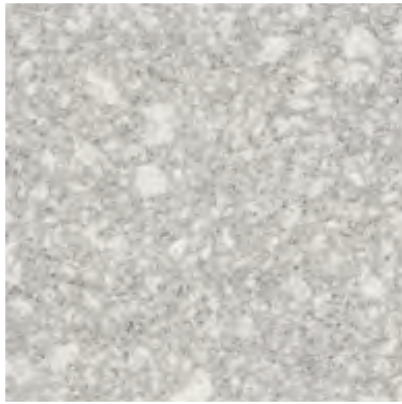


© 2020 bKL Architecture LLC



P1A

Concrete Unit Pavers Grey



P1B

Concrete Unit Pavers Beige



P2A

Granite Charcoal (Thermal Finish)



P2B

Granite Charcoal (Diamond 100 Finish)



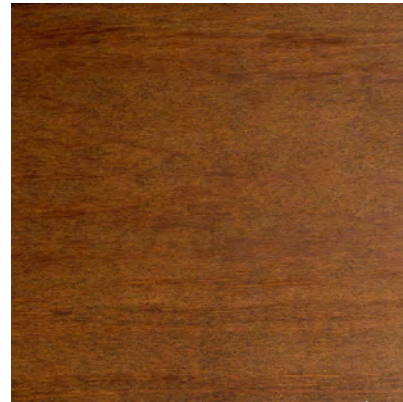
P3

Cobblestone Grey Mix 1



WD

Thermally Modified Wood - Ash Kebony Unstained



F

Seating Elements Reference Images Showing Wooden Lounge Seating



Shumard Oak 'Prominence' (33rd Street) ● (Native)



Willow Oak 'Ascendor' (Potomac Ave)



Black Tupelo (29th Street) ● (Native)



Fall Foliage



Ginkgo 'Golden Collonade'



Persian Ironwood 'Conceplation'



Eastern Redbud ● (Native)



Pyramidal European Hornbeam

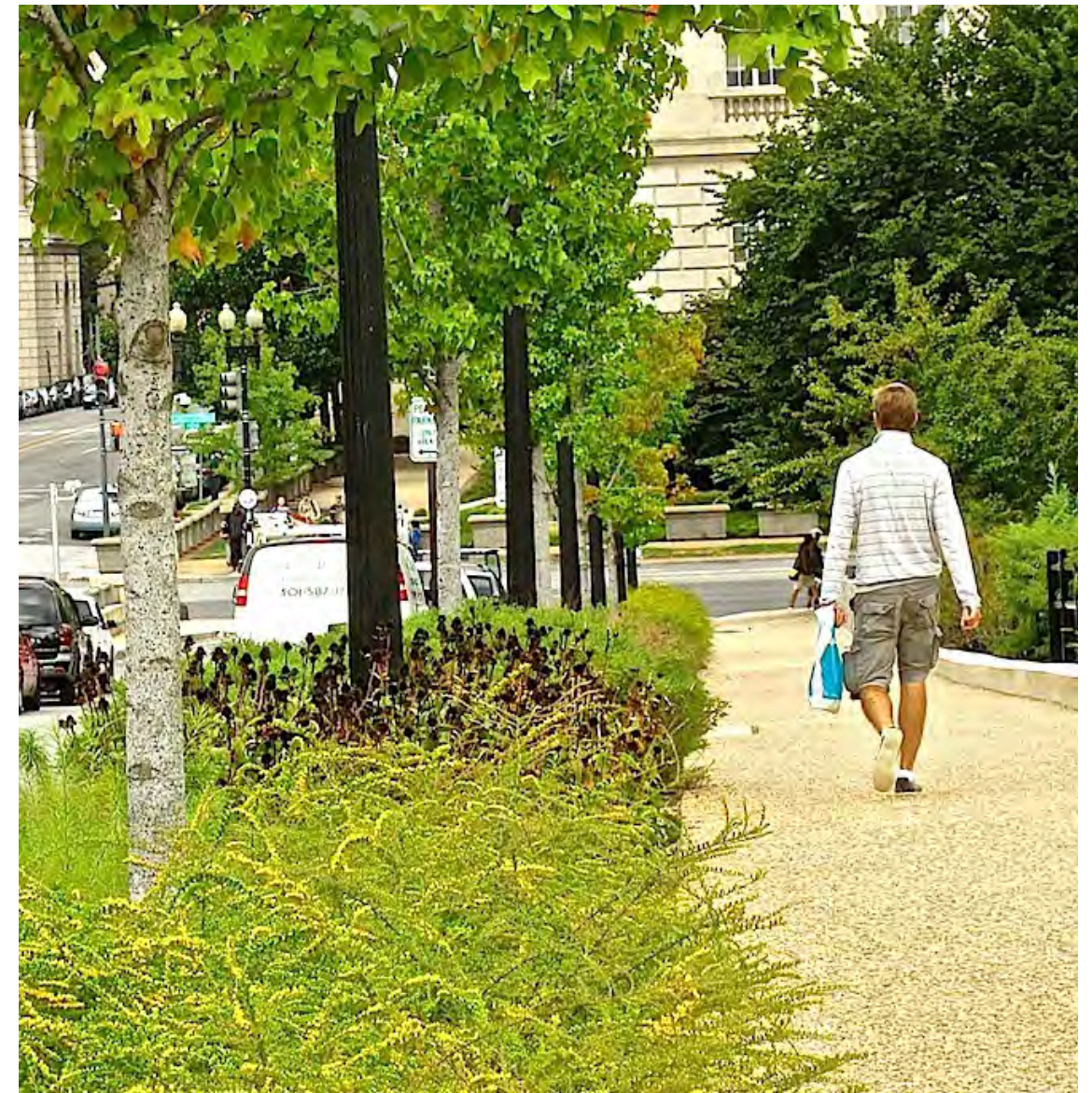
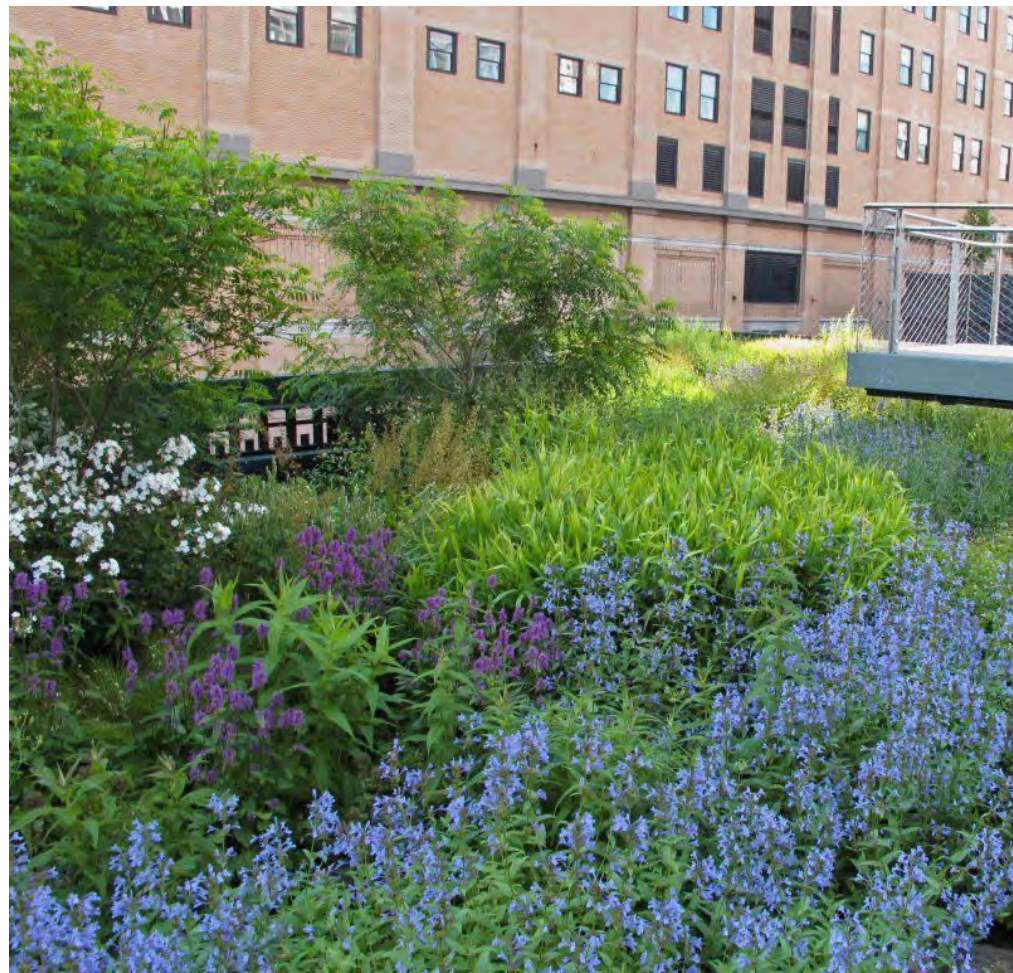
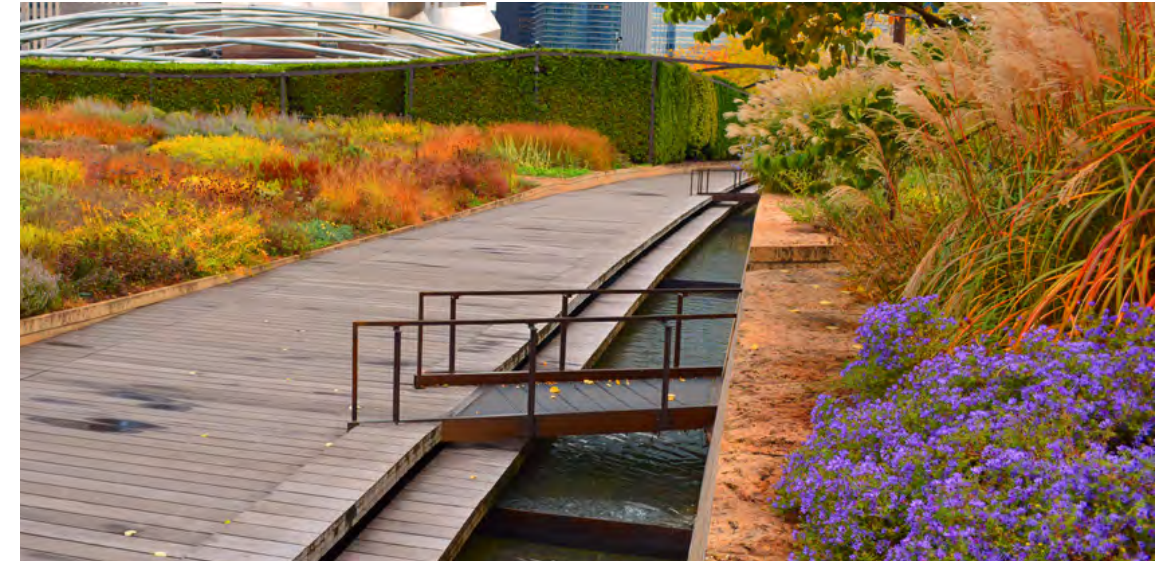


Red Oak 'Streetwise' ● (Native)



Thuja occidentalis 'Techny' ● (Native)





GRASSES

Karl Foerster



Pennsylvania Sedge ●



Hairawn Muhly ●



Autumn Moor Grass



Prairie Dropseed ●



PERENNIALS

Blue Star ●



Pink Coreopsis ●



Purple Coneflower



Hairy Alum Root ●



Hosta Royal Standard



Ostrich Fern ●



Phlox Subulata ●



Stonecrop



SHRUBS

Azalea White



Arrowwood Viburnum ●



Inkberry ●



Cherry Laurel



Rosa Pink Drift



Oakleaf Hydrangea ●



Virginia Sweetspire ●



Red Twig Dogwood ●



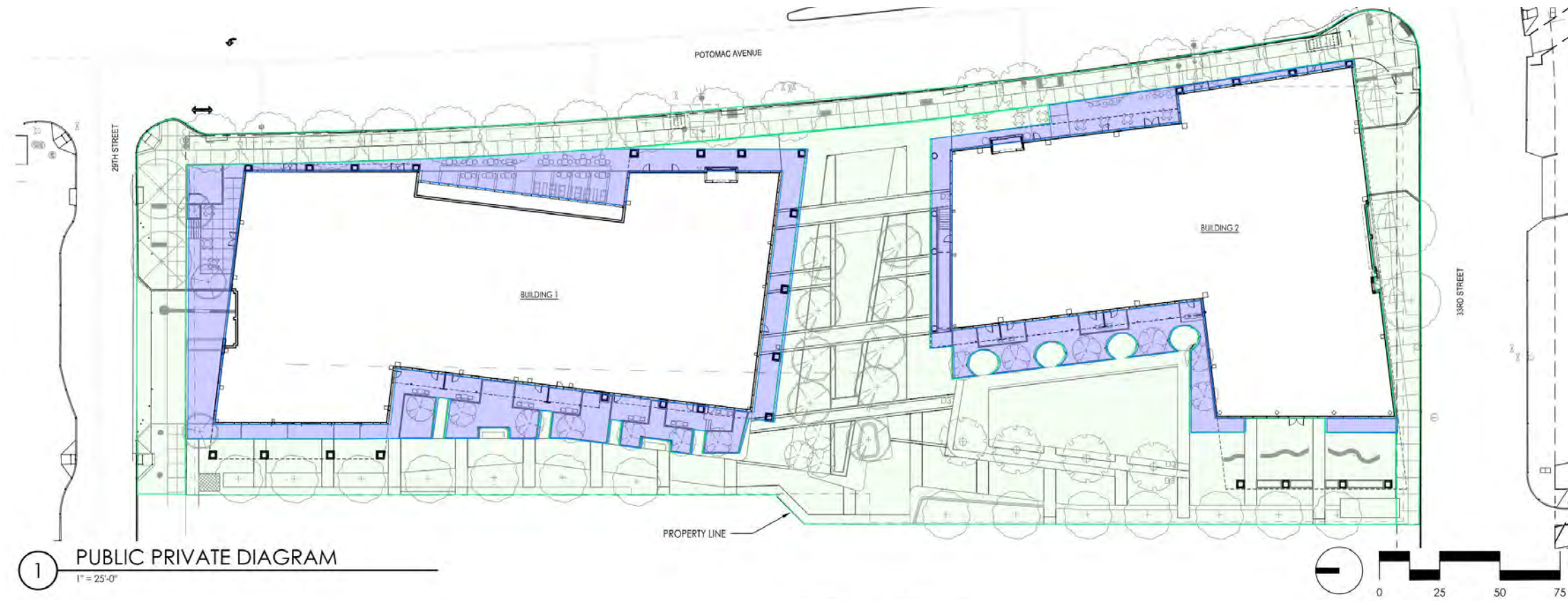
Glencoe Boxwood



Bayberry ●

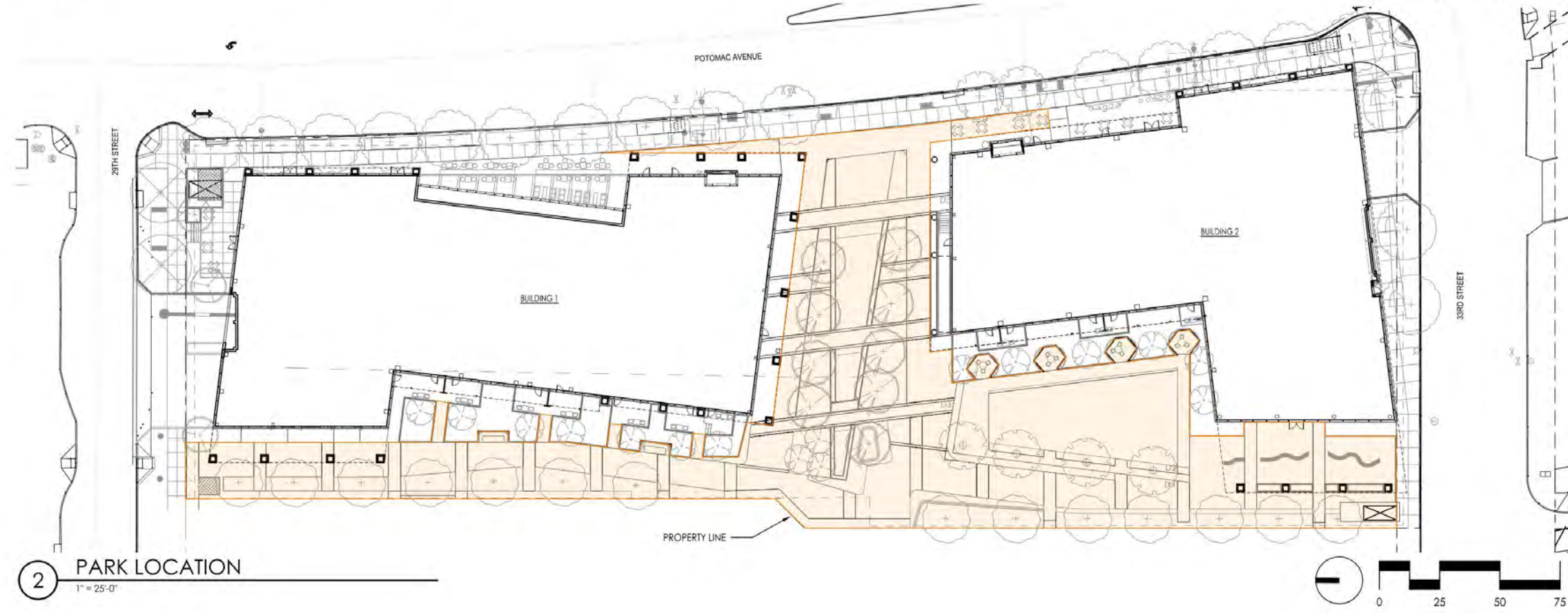


● NATIVE



LEGEND

- Private 12,891.75 sf
- Public 40,834.61 sf



LEGEND

- Park 27,660.70 sf



THANK YOU

