

HIGH VISIBILITY CROSSWALK NOT TO SCALE

PAVEMENT MARKING NOTES:

- STREET WIDTH MEASUREMENTS ARE FROM FACE OF CURB TO FACE OF CURB. LANES ARE MEASURED FROM CENTER OF MARKING TO CENTER OF MARKING.
- CONTACT DES-TRANSPORTATION ENGINEERING & OPERATIONS CONSTRUCTION MANAGEMENT SPECIALIST OR HIS DESIGNEE AT 703-228-6598 OR 571-437-1077 TO APPROVE MARKING LAYOUT 48 HOURS PRIOR TO INSTALLATION OF MARKINGS.
- PAVEMENT MARKINGS TO BE IN ACCORDANCE WITH THE FOLLOWING AND ANY REVISIONS HERE TO:
 - THE MANUAL ON UNIFORM TRAFFIC CONTROL DEVICES.
 - ARLINGTON COUNTY MARKING STANDARDS.
- ALL MARKINGS SHALL BE THERMOPLASTIC PER ARLINGTON COUNTY MARKING STANDARDS.
- STOP BARS SHALL BE A MINIMUM OF 4' IN ADVANCE OF A MARKED CROSSWALK. IF THERE IS NO MARKED CROSSWALK, STOP BAR SHALL BE NO MORE THAN 30' FROM THE NEAREST EDGE OF THE INTERSECTED TRAVELED WAY.
- CROSSWALKS SHALL BE 10' WIDE UNLESS OTHERWISE NOTED.
- LEFT TURN ARROWS SHALL BE LOCATED 25' BACK FROM STOP BAR. FOR ADDITIONAL ARROWS FOLLOW COUNTY MARKING STANDARDS.
- ON-STREET PARKING LANE IS 7' WIDE (UNLESS OTHERWISE NOTED) AND MARKED WITH 4" WIDE WHITE LINES. BEGINNING AND END OF PARKING SHALL BE MARKED WITH AN END LINE PERPENDICULAR TO CURB EXCEPT AT NUBS OR WHERE OTHERWISE INDICATED.
- SHARED LANE MARKINGS SHALL BE PLACED IN CENTER OF LANE, 250' APART UNLESS OTHERWISE SPECIFIED.
- BIKE LANE SYMBOLS TO BE PLACED 330' APART UNLESS OTHERWISE SPECIFIED.
- EDGE LINES ARE ONLY REQUIRED WHERE SHOWN ON THE PLANS.
- FOR DETAILS SEE ARLINGTON COUNTY PAVEMENT MARKING SPECIFICATION, DETAILS MK-1 TO MK-12

SIGN NOTES:

- FOR ALL SIGN POSTS PLACED IN CONCRETE USE 7 GAUGE HEAVY DUTY ANCHOR (30"x2.50") WITH HARDWARE FOR 2" POST. USE 3/8" CORNER BOLT WITH FLANGED NUT AND 3/8" DRIVER RIVET WITH WASHER.
- CONTACT T&O CONSTRUCTION MANAGER OR HIS DESIGNEE AT 703-228-6598 OR 571-437-1077 48 HRS PRIOR TO POURING CONCRETE. ALTERNATIVE CONTACT AT 703-228-3788 OR 571-414-7497.

STANDARD PAVEMENT MARKING LEGEND

(A)	TYPE B CLASS 1	WHITE 4" WIDTH	PARKING LANES, EDGE LINES, LANE LINES
(B)	TYPE B CLASS 1	WHITE 4" WIDTH, 10' LONG, 30' SPACING	DASHED LANE LINES
(C)	TYPE B CLASS 1	WHITE 4" WIDTH, 2' LONG 10' SPACING	LANE TRANSITIONS, TURN LANE SKIPS
(D)	TYPE B CLASS 1	WHITE 18" WIDTH	STOP BARS
(E)	TYPE B CLASS 1	WHITE 24" WIDTH	CONTINENTAL CROSS WALKS
(F)	TYPE B CLASS 1	WHITE 6" WIDTH	TURN LANES, TRANSVERSE CROSS WALKS, BIKE LANES
(G)	TYPE B CLASS 1	YELLOW 4" WIDTH, 10' LONG, 30' SPACING	DIVIDED TRAFFIC, TWO WAY TURN LANES
(H)	TYPE B CLASS 1	YELLOW 4" WIDTH	EDGE LINES
(I)	TYPE B CLASS 1	YELLOW 4" WIDTH, DOUBLE LINE, 4" SPACING	CENTERLINES
(J)	TYPE B CLASS 1	WHITE 6" WIDTH, 10' SPACING @45 DEGREE	HATCH LINES, SAFETY ZONES
(K)	TYPE B CLASS 1	WHITE SINGLE ARROW	TURN LANES
(L)	TYPE B CLASS 1	WHITE COMBINATION ARROW	TURN LANES
(M)	TYPE B CLASS 1	WHITE 8" LETTERS	PAVEMENT LETTERS (STOP, YIELD, BUS, ONLY, etc.)
(N)	TYPE B CLASS 1	WHITE 6" WIDTH, 2' LONG, 10' SPACING	LANE TRANSITIONS, TURN LANE SKIPS
(O)	TYPE B CLASS 1	WHITE 12" WIDTH, 20' SPACING @45 DEGREE	GORE MARKINGS
(P)	TYPE B CLASS 1	YELLOW 8" WIDTH @45 DEGREE	GORE MARKINGS
(Q)	TYPE B CLASS 1	WHITE 6" WIDTH, 2' LONG, 4' SPACING	LANE TRANSITIONS
(R)	TYPE B CLASS 1	WHITE 4" WIDTH, DOUBLE LINE, 4" SPACING	CURB EXTENSIONS
(S)	TYPE B CLASS 1	WHITE 24" WIDTH	VDOT - STOP BARS
(T)	TYPE B CLASS 1	YELLOW 6" WIDTH, 2' LONG, 4' SPACING	LANE TRANSITIONS

NOTE: ***** = ERADICATION OF MARKING

SEAL 90% SUBMISSION

APPROVALS DATE

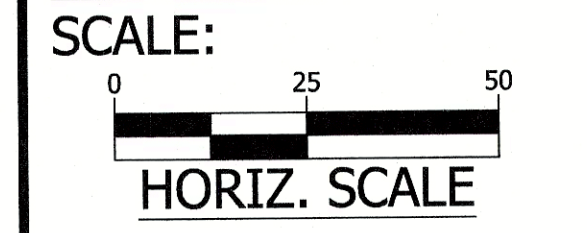
APPROVALS ARE NOT REQUIRED WITH THIS SUBMISSION

REVISIONS DATE

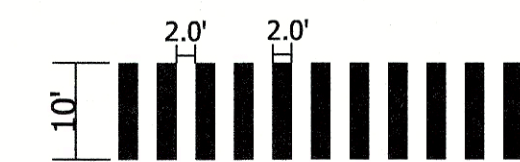
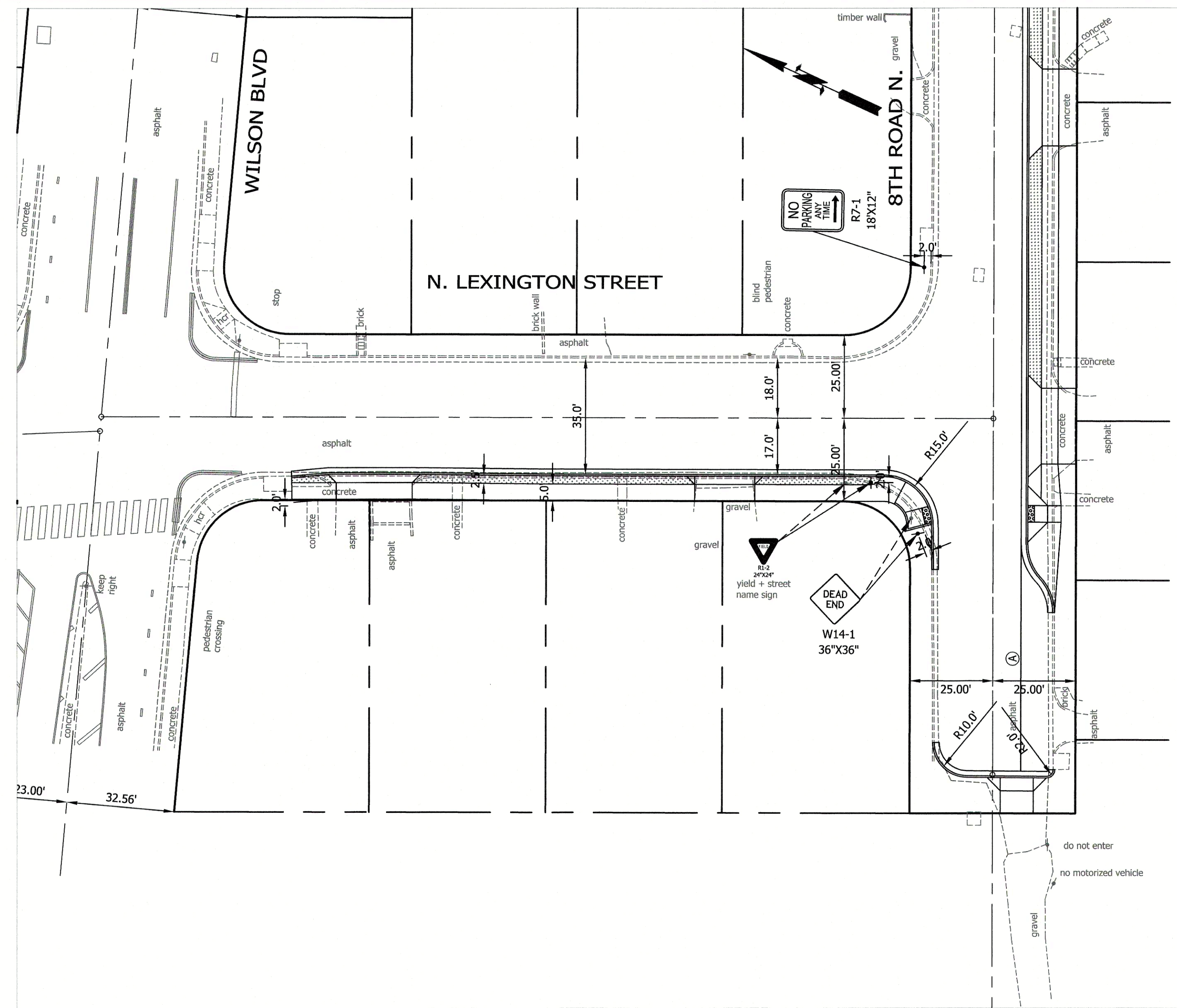
8TH ROAD N SIDEWALK IMPROVEMENTS AP05 8TH ROAD N & N LEXINGTON STREET SIGNAGE AND MARKING PLAN 8TH ROAD N

DESIGNED: J. ROJAS DRAWN: J. ROJAS CHECKED: P. RIGBY MISS UTILITY TRANSMITTAL #: 5387-D

PLOTTED: JULY 7 2020



HORIZ. SCALE SHEET C101.1



HIGH VISIBILITY CROSSWALK
NOT TO SCALE

PAVEMENT MARKING NOTES:

- STREET WIDTH MEASUREMENTS ARE FROM FACE OF CURB TO FACE OF CURB. LANES ARE MEASURED FROM CENTER OF MARKING TO CENTER OF MARKING.
- CONTACT DES-TRANSPORTATION ENGINEERING & OPERATIONS CONSTRUCTION MANAGEMENT SPECIALIST OR HIS DESIGNEE AT 703-228-6598 OR 571-437-1077 TO APPROVE MARKING LAYOUT 48 HOURS PRIOR TO INSTALLATION OF MARKINGS.
- PAVEMENT MARKINGS TO BE IN ACCORDANCE WITH THE FOLLOWING AND ANY REVISIONS HERE TO:
 - THE MANUAL ON UNIFORM TRAFFIC CONTROL DEVICES.
 - ARLINGTON COUNTY MARKING STANDARDS.
- ALL MARKINGS SHALL BE THERMOPLASTIC PER ARLINGTON COUNTY MARKING STANDARDS.
- STOP BARS SHALL BE A MINIMUM OF 4' IN ADVANCE OF A MARKED CROSSWALK. IF THERE IS NO MARKED CROSSWALK, STOP BAR SHALL BE NO MORE THAN 30' FROM THE NEAREST EDGE OF THE INTERSECTED TRAVELED WAY.
- CROSSWALKS SHALL BE 10' WIDE UNLESS OTHERWISE NOTED.
- LEFT TURN ARROWS SHALL BE LOCATED 25' BACK FROM STOP BAR. FOR ADDITIONAL ARROWS FOLLOW COUNTY MARKING STANDARDS.
- ON-STREET PARKING LANE IS 7' WIDE (UNLESS OTHERWISE NOTED) AND MARKED WITH 4" WIDE WHITE LINES. BEGINNING AND END OF PARKING SHALL BE MARKED WITH AN END LINE PERPENDICULAR TO CURB EXCEPT AT NUBS OR WHERE OTHERWISE INDICATED.
- SHARED LANE MARKINGS SHALL BE PLACED IN CENTER OF LANE, 250' APART UNLESS OTHERWISE SPECIFIED.
- BIKE LANE SYMBOLS TO BE PLACED 330' APART UNLESS OTHERWISE SPECIFIED.
- EDGE LINES ARE ONLY REQUIRED WHERE SHOWN ON THE PLANS.
- FOR DETAILS SEE ARLINGTON COUNTY PAVEMENT MARKING SPECIFICATION, DETAILS MK-1 TO MK-12

SIGN NOTES:

- FOR ALL SIGN POSTS PLACED IN CONCRETE USE 7 GAUGE HEAVY DUTY ANCHOR (30"x2.50") WITH HARDWARE FOR 2" POST. USE 3/8" CORNER BOLT WITH FLANGED NUT AND 3/8" DRIVER RIVET WITH WASHER.
- CONTACT T&O CONSTRUCTION MANAGER OR HIS DESIGNEE AT 703-228-6598 OR 571-437-1077 48 HRS PRIOR TO POURING CONCRETE. ALTERNATIVE CONTACT AT 703-228-3788 OR 571-414-7497.

STANDARD PAVEMENT MARKING LEGEND

(A)	TYPE B CLASS 1	WHITE 4" WIDTH	PARKING LANES, EDGE LINES, LANE LINES
(B)	TYPE B CLASS 1	WHITE 4" WIDTH, 10' LONG, 30' SPACING	DASHED LANE LINES
(C)	TYPE B CLASS 1	WHITE 4" WIDTH, 2' LONG 10' SPACING	LANE TRANSITIONS, TURN LANE SKIPS
(D)	TYPE B CLASS 1	WHITE 18" WIDTH	STOP BARS
(E)	TYPE B CLASS 1	WHITE 24" WIDTH	CONTINENTAL CROSS WALKS
(F)	TYPE B CLASS 1	WHITE 6" WIDTH	TURN LANES, TRANSVERSE CROSS WALKS, BIKE LANES
(G)	TYPE B CLASS 1	YELLOW 4" WIDTH, 10' LONG, 30' SPACING	DIVIDED TRAFFIC, TWO WAY TURN LANES
(H)	TYPE B CLASS 1	YELLOW 4" WIDTH	EDGE LINES
(I)	TYPE B CLASS 1	YELLOW 4" WIDTH, DOUBLE LINE, 4" SPACING	CENTERLINES
(J)	TYPE B CLASS 1	WHITE 6" WIDTH, 10' SPACING @45 DEGREE	HATCH LINES, SAFETY ZONES
(K)	TYPE B CLASS 1	WHITE SINGLE ARROW	TURN LANES
(L)	TYPE B CLASS 1	WHITE COMBINATION ARROW	TURN LANES
(M)	TYPE B CLASS 1	WHITE 8" LETTERS	PAVEMENT LETTERS (STOP, YIELD, BUS, ONLY, etc.)
(N)	TYPE B CLASS 1	WHITE 6" WIDTH, 2' LONG, 10' SPACING	LANE TRANSITIONS, TURN LANE SKIPS
(O)	TYPE B CLASS 1	WHITE 12" WIDTH, 20' SPACING @45 DEGREE	GORE MARKINGS
(P)	TYPE B CLASS 1	YELLOW 8" WIDTH @45 DEGREE	GORE MARKINGS
(Q)	TYPE B CLASS 1	WHITE 6" WIDTH, 2' LONG, 4' SPACING	LANE TRANSITIONS
(R)	TYPE B CLASS 1	WHITE 4" WIDTH, DOUBLE LINE, 4' SPACING	CURB EXTENSIONS
(S)	TYPE B CLASS 1	WHITE 24" WIDTH	VDOT - STOP BARS
(T)	TYPE B CLASS 1	YELLOW 6" WIDTH, 2' LONG, 4' SPACING	LANE TRANSITIONS

NOTE:
***** = ERADICATION OF MARKING



DEPARTMENT OF ENVIRONMENTAL SERVICES
 FACILITIES & ENGINEERING DIVISION
 ENGINEERING BUREAU
 2100 CLARENDON BOULEVARD, SUITE 813
 ARLINGTON, VA 22201
 PHONE: 703.228.3629
 FAX: 703.228.3606
 COPYRIGHT © 2018 ARLINGTON COUNTY VIRGINIA - ALL RIGHTS RESERVED

SEAL

90%
SUBMISSION

APPROVALS DATE

APPROVALS ARE NOT REQUIRED WITH THIS SUBMISSION

REVISIONS DATE

REVISIONS	DATE

8TH ROAD N SIDEWALK IMPROVEMENTS
 AP05
 8TH ROAD N & N LEXINGTON STREET
 SIGNAGE AND MARKING PLAN
 N LEXINGTON ST

DESIGNED: J. ROJAS
 DRAWN: J. ROJAS
 CHECKED: P. RIGBY
 MISS UTILITY TRANSMITTAL #: 5387-D

PLOTTED: JULY 7 2020

