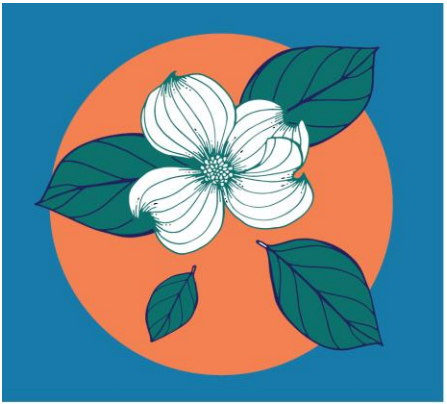
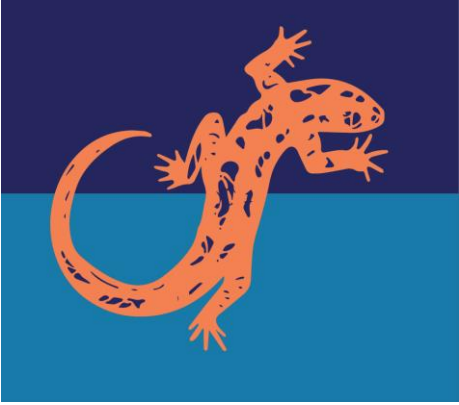


FNRP Public Engagement Update



ARLINGTON
VIRGINIA

DEPARTMENT OF
PARKS AND RECREATION



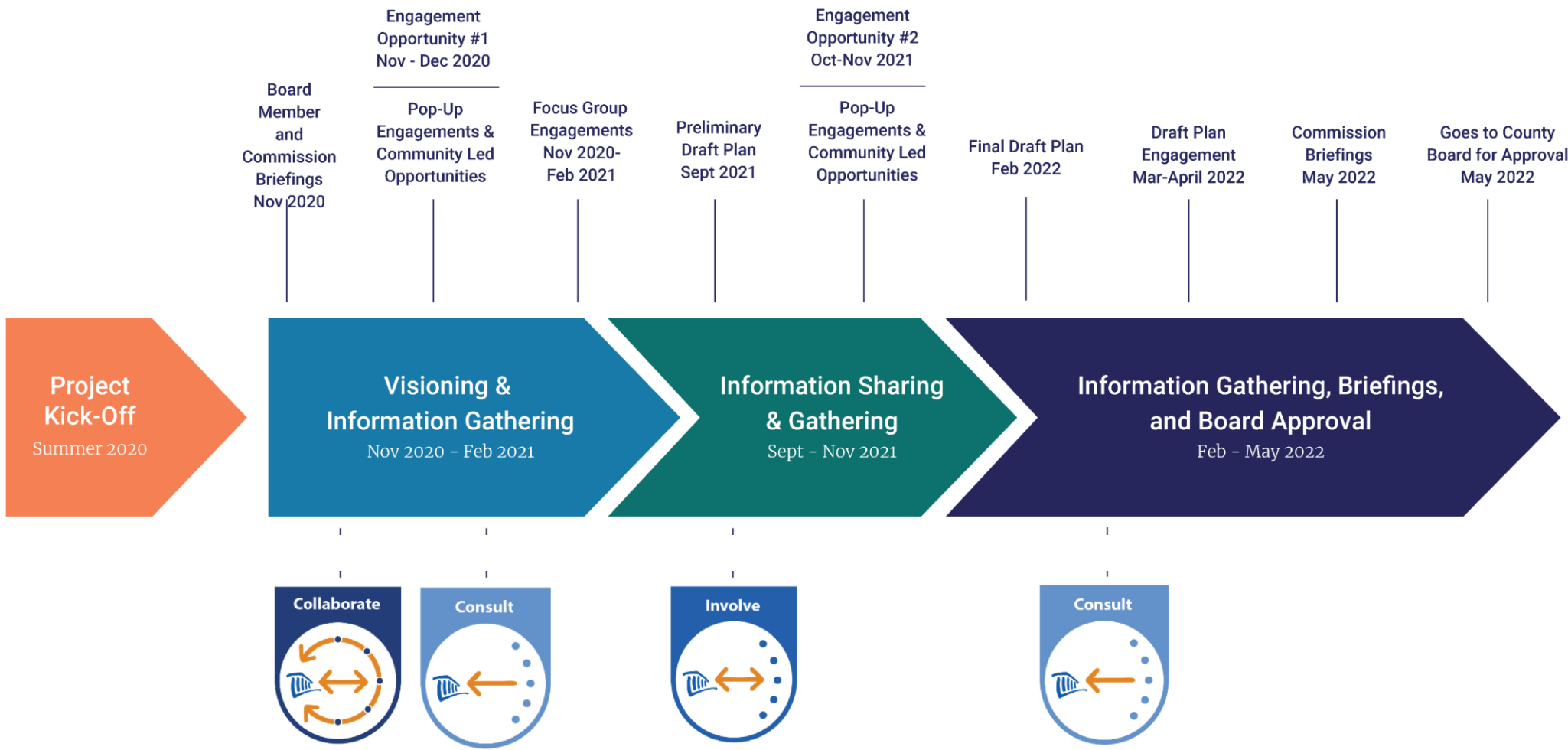
PSMP
Sub-Element:
Forestry and
Natural
Resources Plan

NRJAG

March 1, 2020 | 7:00 p.m. EST

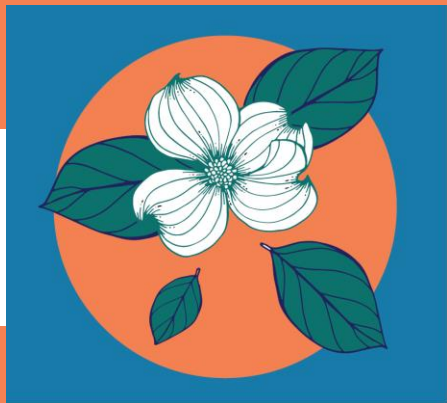
Agenda

- Introductions
- Engagement Overview
- Online Engagement Findings
- Focus Groups Updates
- Next Steps
- Audience Q&A



Engagement Overview

- Board Member and Commission Briefings
- Online engagement through 76Engage
- Focus Groups



ONLINE ENGAGEMENT

Online Engagement Overview

Online Tool:

- **Three questionnaires on 76 Engage**
- **Opportunity was open from 11/10-12/23**

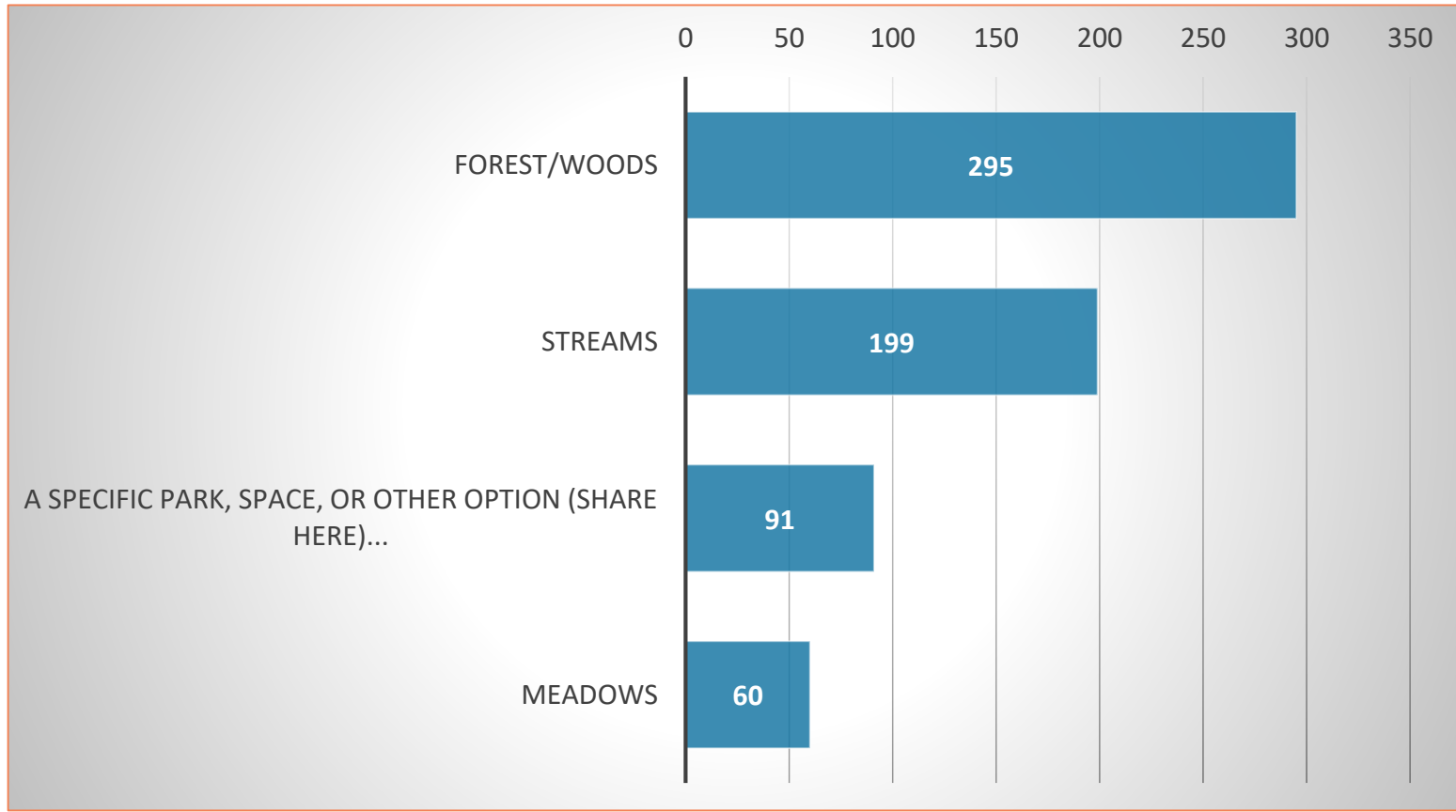
Participation:

Questionnaire	Submissions
Nature in Arlington	384
Natural Areas	341
Tree Canopy	356
TOTAL SUBMISSIONS	1,018
TOTAL NUMBER OF INDIVIDUALS	576

Stakeholder Outreach:

- **3 Newsletter announcements to (>11,000 subscribers)**
- **2 mentions in Inside Arlington (>135,000 subscribers)**
- **Follow ups to community and advocacy group leaders**
- **Follow ups to all civic association presidents**
- **Physical signage with QR codes at 8 major parks/ natural areas**
- **Promotional video (> 9.8k views)**
- **Social media posts**
- **Fores-TREE Squad holiday social media campaign**
- **Local media coverage (i.e., ArlNow, Society of American Foresters)**

What are your favorite types of natural areas to visit?



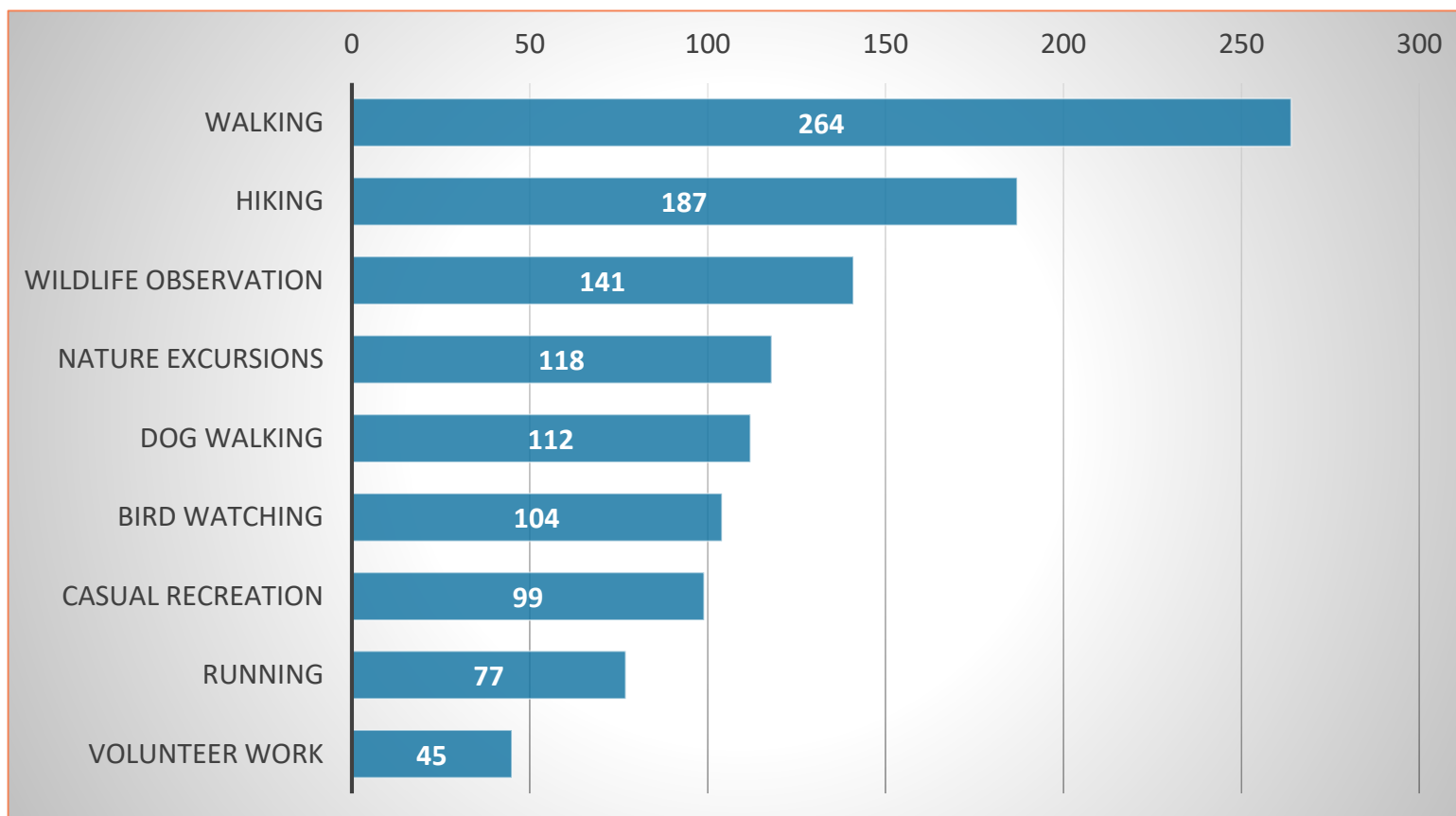
Specific parks or natural spaces:

- Glencarlyn
- Potomac Overlook
- Variety
- Gulf Branch
- W&OD
- Lubber Run
- Zachary Taylor Park
- Bluemont
- Four Mile Run
- Barcroft
- Biking Trails
- Donaldson Run
- Windy Run
- Fort C.F. Smith
- Lacey Woods
- Long Branch
- Trails
- Walking/ Running/ Hiking Trails
- Dog Parks
- Randolph Park
- Dog Parks
- Randolph Park
- Mount Vernon Trail
- Pimmit Run
- Glebe Road Park
- Arlington Forest
- Long Bridge
- VA Highlands
- Quincy Park
- George Washington Memorial Parkway
- Mary Carlin Woods
- Woodlawn
- Fort Ethan Allen Park
- Potomac Heritage
- Fillmore Park
- Charles A. Stewart Park
- Upton Hill
- Bluemont Junction Trail
- Bon Air



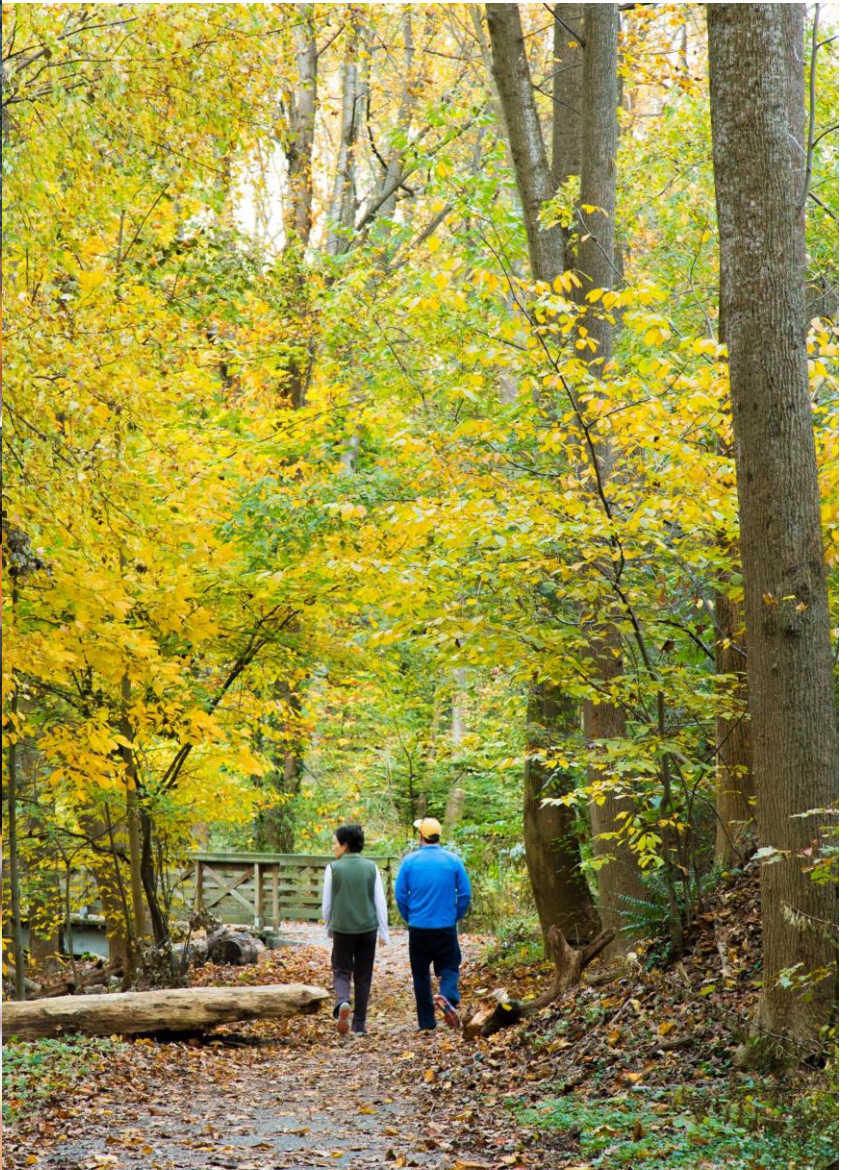
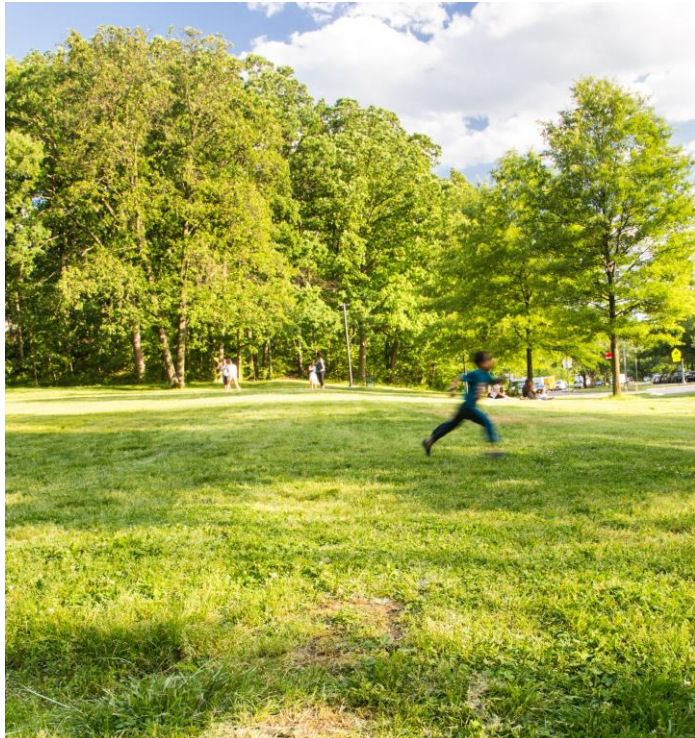
What activities do you like to do most in these natural areas?

What activities do you like to do most in these natural areas? *(Select all that apply)*



OTHER:

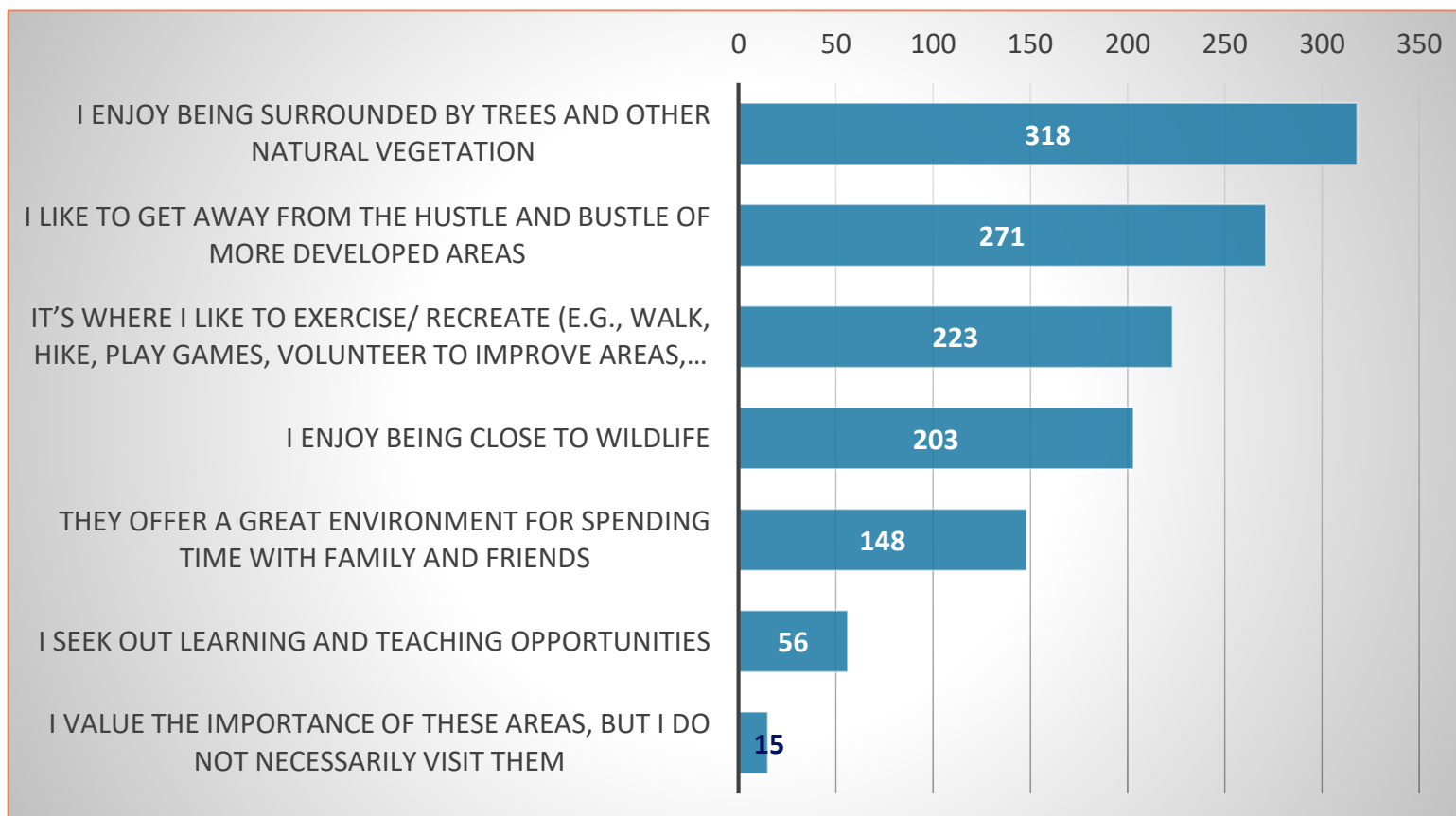
- Biking
- Relaxing
- Foraging
- Learning
- Fishing
- Group Meetings
- Scootering
- Playing with dog



© David Howell 2015

What attracts you most to these natural areas?

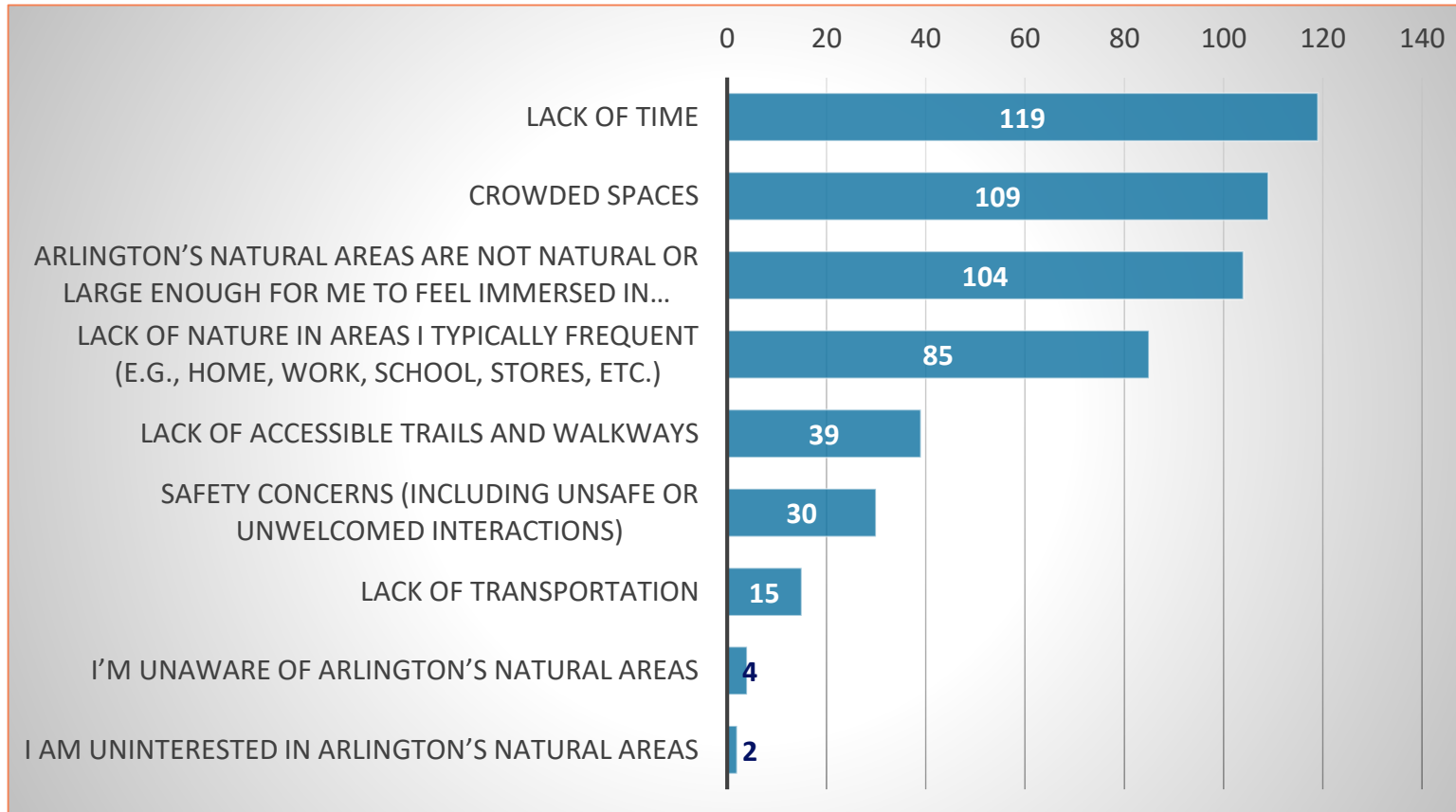
What attracts you most to these natural areas? *(Select all that apply)*



OTHER:

- Helps with mental health
- Allows for exploration
- Valuing access to natural spaces
- Allows for recreation
- Offers a connection to nature
- Educational experiences
- Green Space
- Advocacy

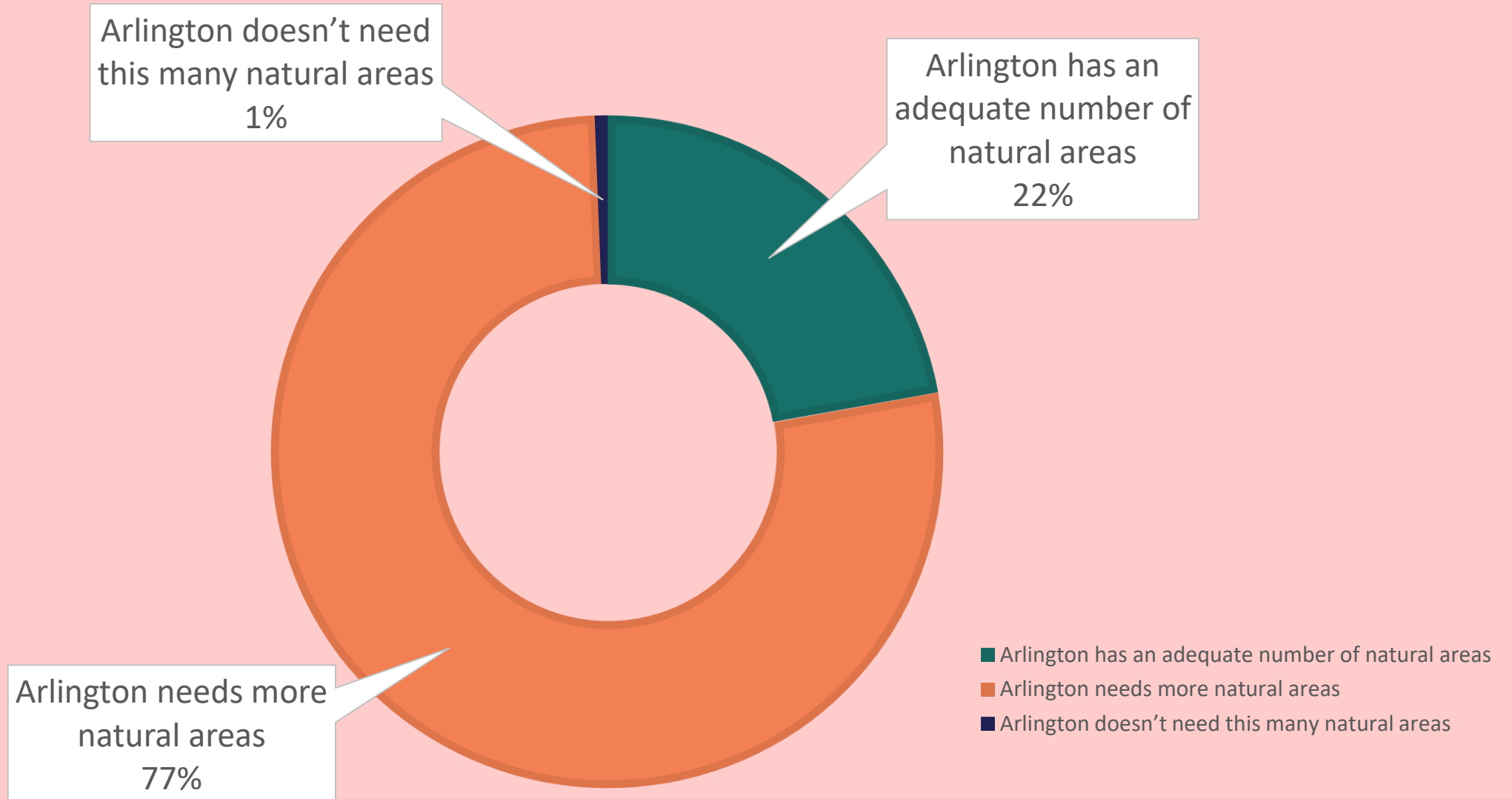
What is the biggest barrier you face when it comes to experiencing nature in Arlington? *(Select all that apply)*



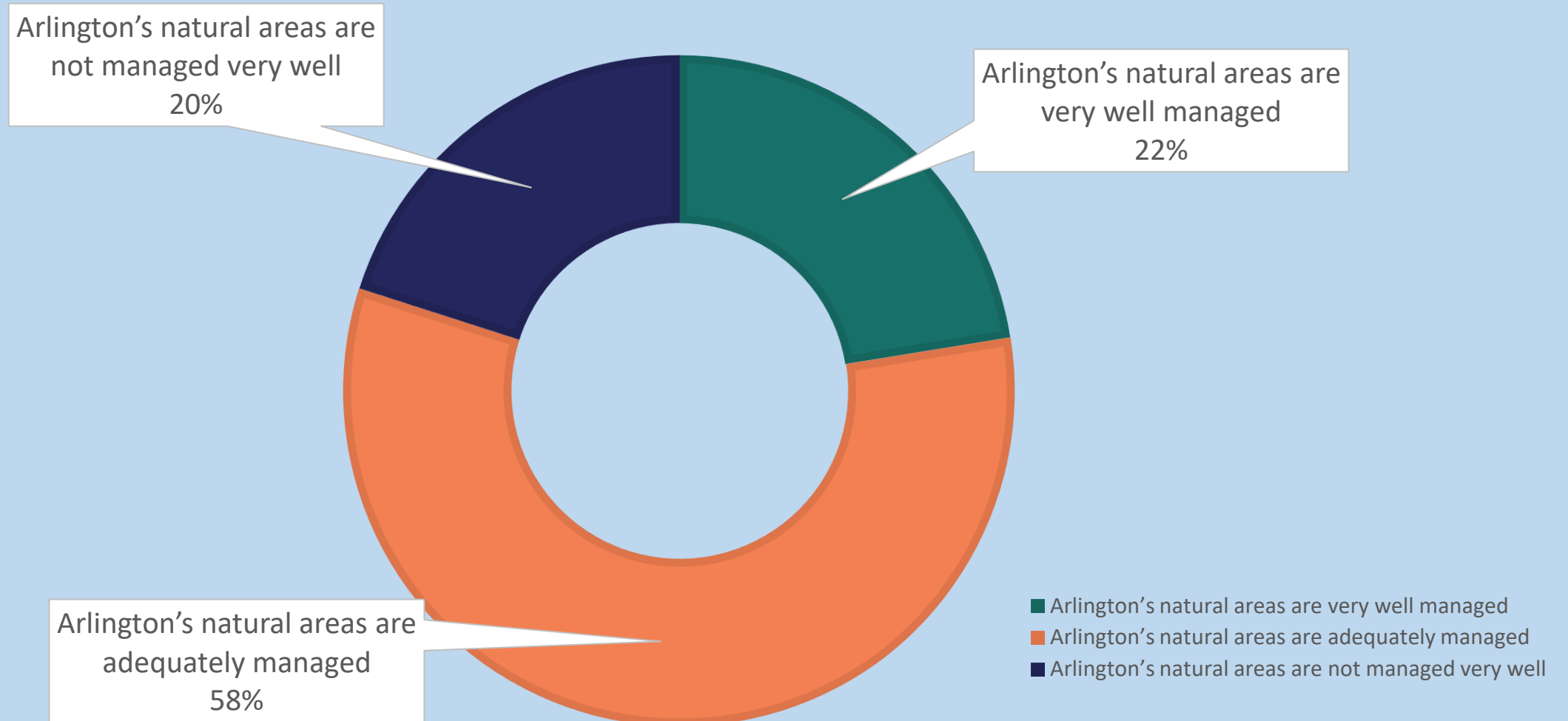
OTHER:

- Development
- Biking Rules
- Accessibility/ Connectivity
- Parking
- Recreators
- Maintenance/ Management
- Off-leash Dogs
- Lack of Awareness
- Safety

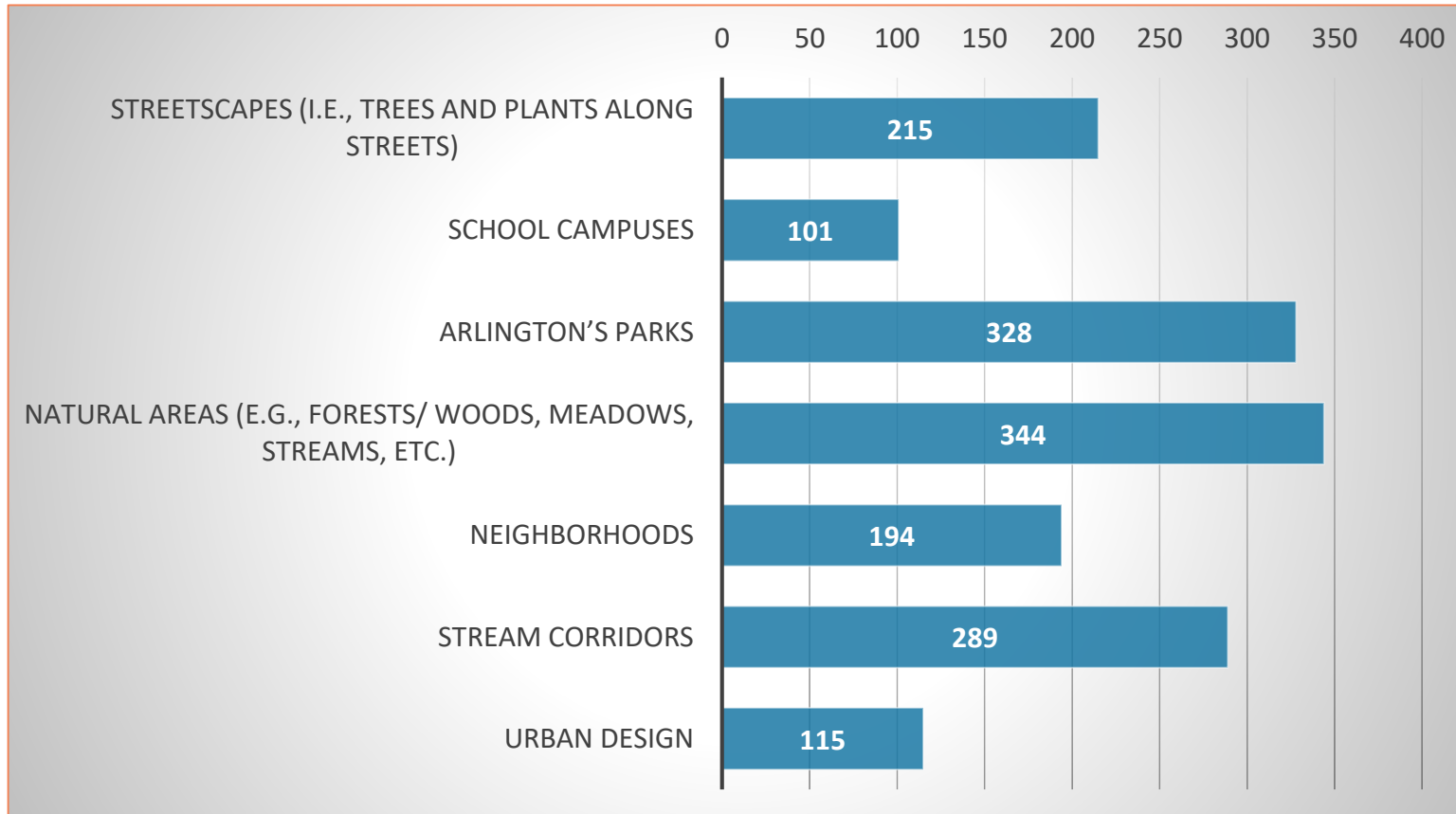
Generally, how do you feel about the AMOUNT of natural areas in Arlington?



Generally, how do you feel about the QUALITY of natural areas in Arlington?



Which of the following come to mind when you think of trees and other natural resources (e.g., air, soil, water, wildlife, etc.) in Arlington? *(Select all that apply)*

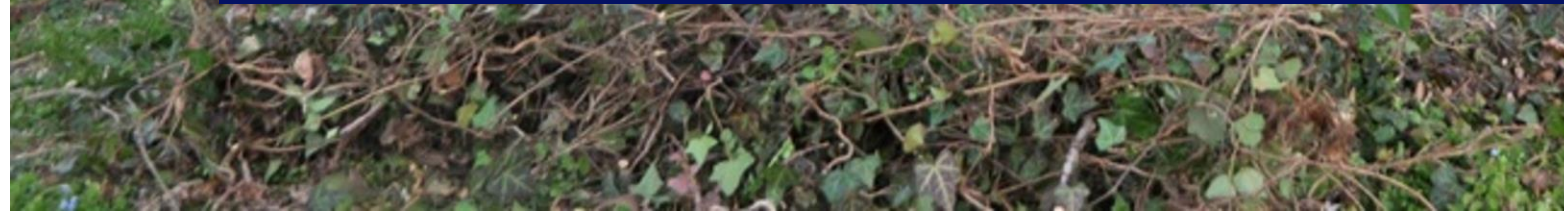


OTHER:

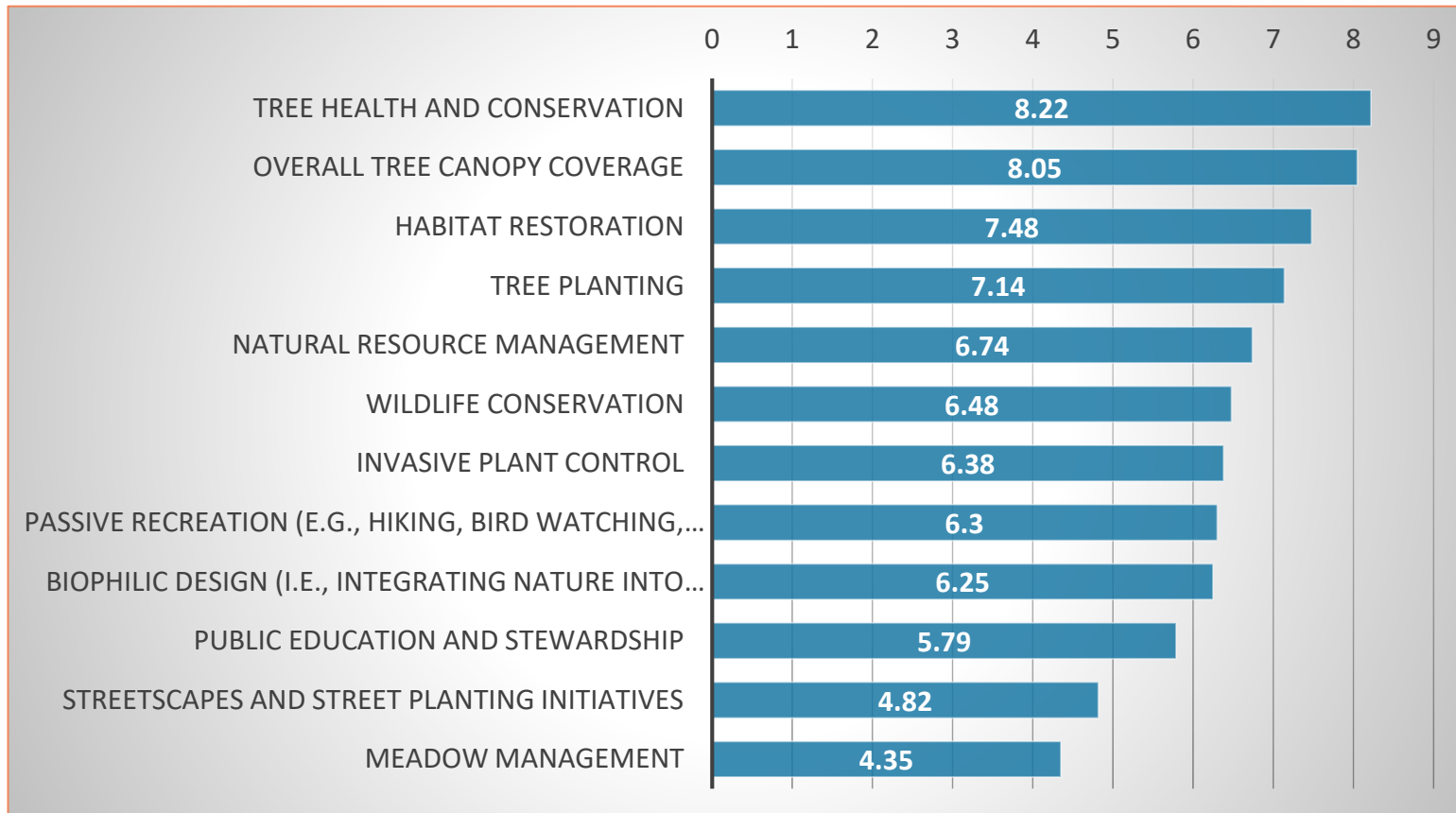
- Neighboring Property
- Development/ Housing
- Wildlife
- Biophilic Design
- Community/ Private Gardens
- Ecosystems/ Habitats
- Planning
- Trails
- Public Health
- County Parks/ Land
- Education
- Stormwater Management
- Streetscapes
- Tree Loss
- Impervious Surfaces
- Noise/ Light Pollution
- Open Space



Rank the following topics in regard to Arlington's trees and other natural resources.



Rank the following topics in regard to Arlington's trees and other natural resources.



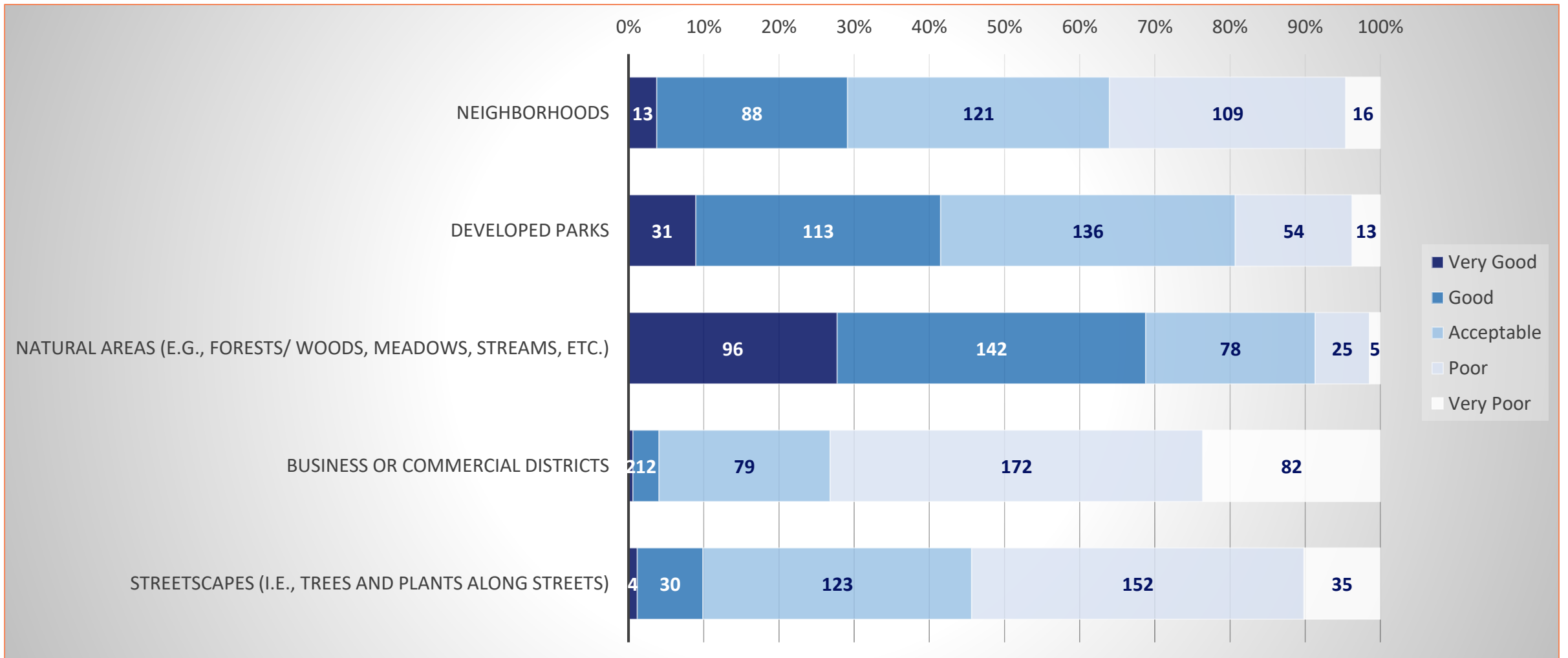
OTHER:

- Wildlife Management/ Habitats
- Stormwater Management
- Development/ Zoning Regulations
- Education/ Stewardship
- Maintenance/ Management
- Active Recreation
- Tree Canopy
- Climate Change/ Sustainability
- Native Species
- Private Land Owners
- Accessibility/ Connectivity
- Impervious Surfaces
- Planting
- Planning
- Land Acquisition/ Expansion
- Biophilic Design
- Open Space
- Environmental Justice
- Fiscal Stewardship/ Funding
- Utilities
- Incentives
- Public Health
- Volunteering/ Engagement
- Political Values
- Community Garden
- Partnerships

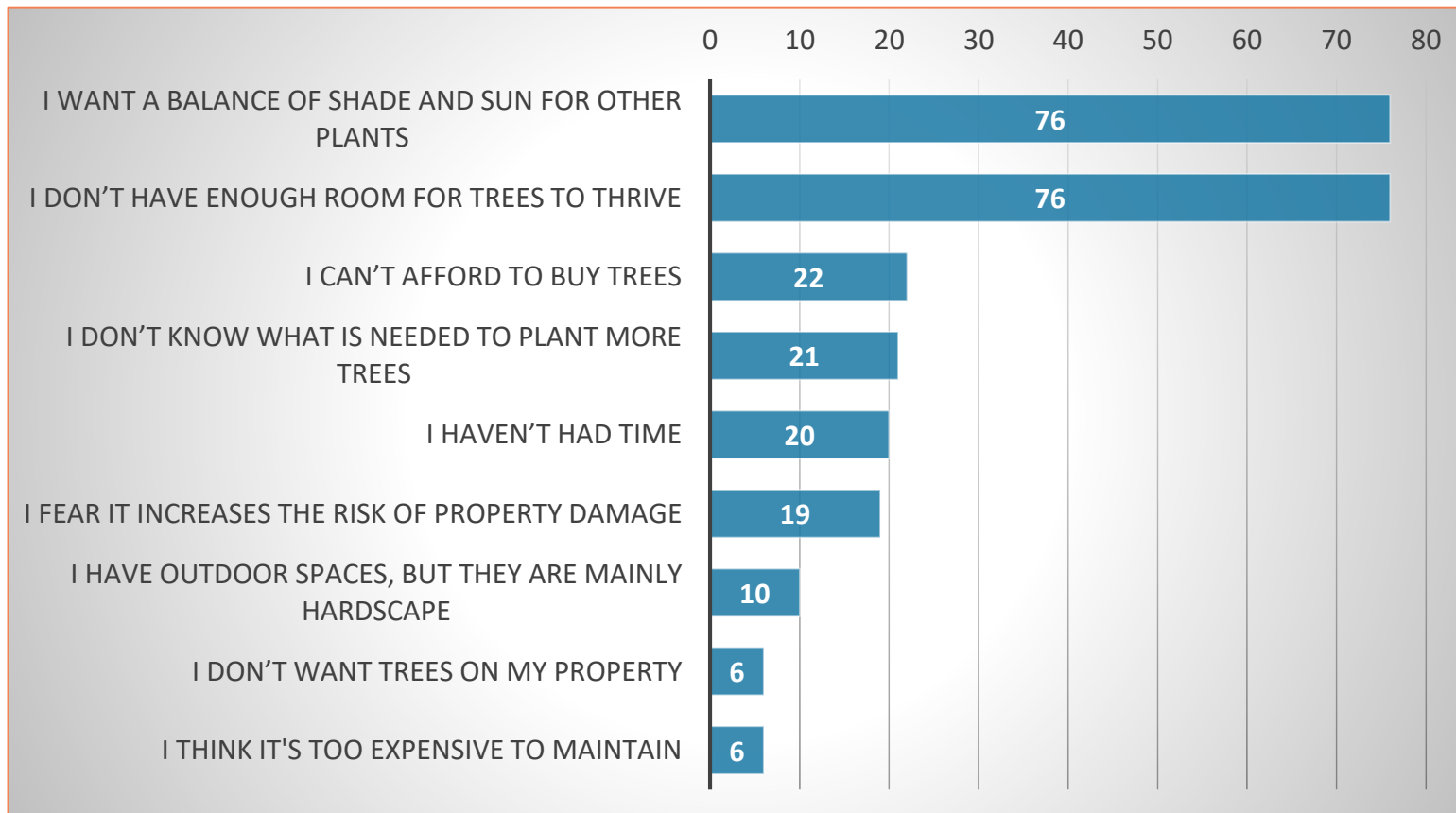
In my opinion, the QUANTITY of trees in the following spaces are:



In my opinion, the QUANTITY of trees in the following spaces are:



If you own land in Arlington, what obstacles limit your ability to plant trees?



OTHER:

- Already have too many trees & plants/ Limited Space
- Utility Issues
- None
- Impacts of or on Neighbors
- HOA/ Condo Association Restrictions
- Lack of Education
- Live in Multi-Family Building/ Don't Own Property With Land
- Too Much Work/ Money
- Maintenance
- Restricted from the Free Tree Program
- Unsafe/ Can Cause Damage
- Wildlife
- Easement On Property
- Lowers Property Value



MAJOR THEMES

Major Themes:

1. Improve Planting Practices (603)
2. Discourage or Limit Development (459)
3. Strengthen Zoning Ordinances & Regulations (420)
4. Improve Maintenance & Management Practices (352)
5. Manage & Protect Wildlife (264)
6. Educate & Foster Stewardship (255)

Honorable Mentions (100 mentions or more):

- Discouraging Tree removal/ Penalties/ Tree Preservation
- Invasive Removal/ Native Plantings
- Private Property/ Single Family Housing
- Forests/ Natural Areas
- Accessibility/ Connectivity
- Green Space/ Open Space
- Stormwater Management
- Planning Practices/ Smart Growth/ Projects
- Recreation
- Public Easements/ Infrastructure
- Impervious Surfaces
- Land Acquisition/ Vacant Land
- Climate Change/ Sustainability
- Biophilic Design/ Nature in an urban environment

Improve Planting Practices

- Plant more trees with the best chance of survival
- Replacing mature trees with small trees is not sufficient
- Educate private property owners about planting/ caring for trees
- Increase the number of trees in developed and commercial areas
- Advertise tree canopy fund and free tree program better
- Acquire more County owned land to expand green space



Discourage or Limit Development

- Find ways to discourage or limit development and paving
- Discourage or limit infill development
- Promote higher density to preserve green space
- Offer incentives and tax credits for conservation efforts
- Discourage development of large homes on small lots



Strengthen Zoning Ordinances and Regulations

- Increase or strengthen requirements for tree protection
- Increase or strengthen requirements for tree replanting
- Place restrictions on single family home sizes
- Place restrictions on planting invasive species
- Reduce the size of mowed buffers/ land
- Increase the sizes of setbacks
- Create better partnerships with developers



Improve Maintenance and Management Practices

- Invest in better maintenance practices
- Educate the public on maintenance practices
- Promote opportunities and partnerships
- Remove invasives and encourage native plantings
- Improve management of trails and connectivity



Manage and Protect Wildlife

- Control deer and other animal species of concern
- Protect trees from harmful insects
- Promote and restore pollinator populations
- Promote cohabitation as much as possible
- Protect wildlife habitats



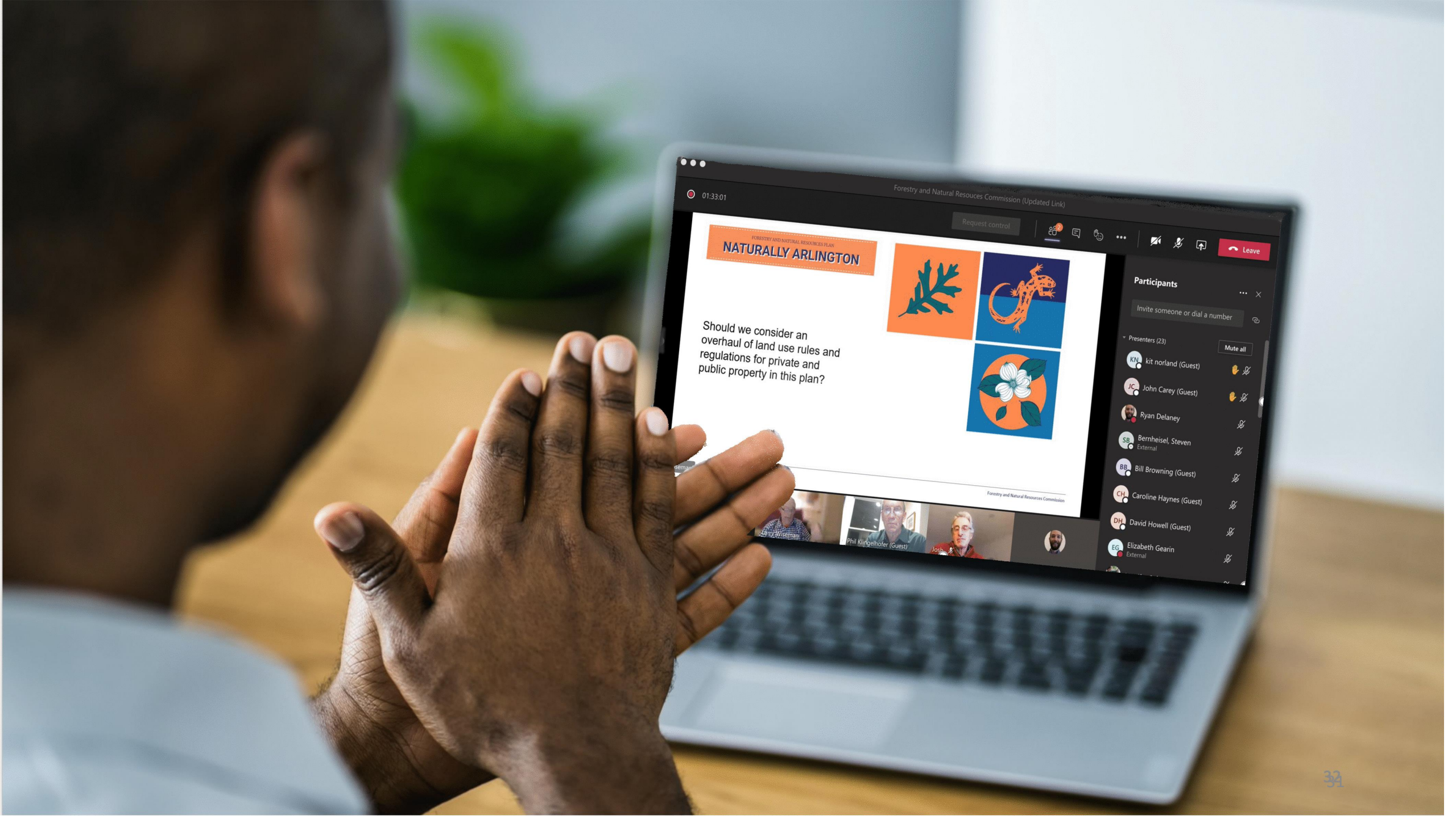
Educate and Foster Stewardship

- Educate homeowners about programs and maintenance
- Promote educational and volunteer opportunities widely
- Prioritize equitable distribution and/or access of natural spaces
- Integrate local forestry and natural resources into APS curriculum
- Partner with local organizations who are already doing this
- Foster volunteerism and engagement



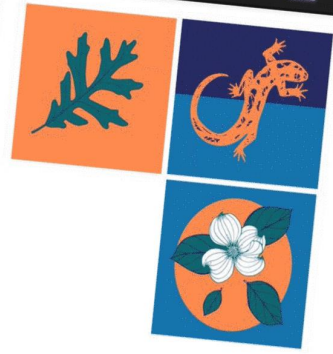


FOCUS GROUPS



FORESTRY AND NATURAL RESOURCES PLAN
NATURALLY ARLINGTON

Should we consider an overhaul of land use rules and regulations for private and public property in this plan?



Forestry and Natural Resources Commission

Forestry and Natural Resources Commission (Updated Link)

01:33:01

Request control

Leave

Participants

Invite someone or dial a number

Presenters (23)

Mute all

KN kit.norland (Guest)

JC John Carey (Guest)

Ryan Delaney

SB Bernheisel, Steven
External

BB Bill Browning (Guest)

CH Caroline Haynes (Guest)

DR David Howell (Guest)

EG Elizabeth Gearin
External





WE REACHED OUT TO...

...community, business, schools, natural resources groups and civic associations.

99 groups invited to participate...

...33 groups interviewed so far.

4 more scheduled interviews...

... before stakeholder engagement ends.



FOCUS GROUP QUESTIONS

1. What is your perception of trees and natural resources in Arlington County?
2. What has the county gotten right with trees and natural resources?
3. How can Arlington County's trees and natural resources be better in the future?
4. What steps can Arlington County take to help realize the future conditions you imagine?

FOCUS GROUP QUESTION #1



What is your perception of trees and natural resources in Arlington County?

- Trees and natural areas are valuable infrastructure but underfunded.
- Arlington County has more green assets than people realize.
- Large parks are devoid of trees and natural features.

FOCUS GROUP QUESTION #2



What has Arlington County gotten right with trees and natural resources?

- Four Mile Run, Lubber Run, and Donaldson Run positively cited for conservation work.
- Prior plans were well done but recommendations are not fully implemented.
- Previous tree give-away and planting initiatives for private property owners.

FOCUS GROUP QUESTION #3



How can Arlington County's trees and natural resources be better in the future?

- Track and steward water quality, tree canopy and wildlife populations to improve the health of the entire ecosystem.
- Residents are supportive of County efforts and want more opportunities to contribute.

FOCUS GROUP QUESTION #4

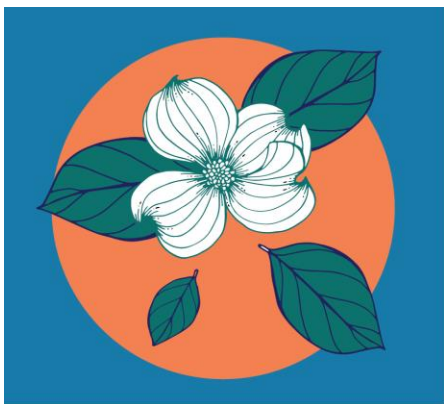
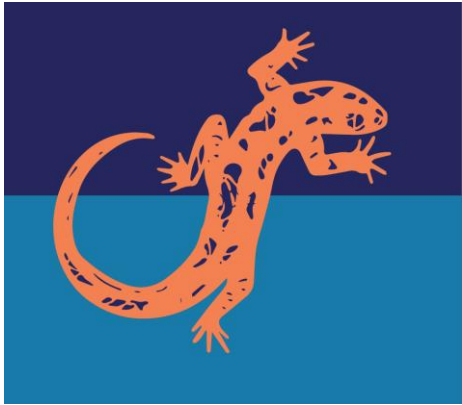


What steps can the County take now to help realize this future?

- Better manage natural areas, stop erosion, remove invasive species and promote biodiversity.
- Prioritize planting trees in low-canopy neighborhoods (primarily in South Arlington).
- Maximize the natural potential of Arlington Public school properties.



QUESTIONS?



ARLINGTON
VIRGINIA

DEPARTMENT OF
PARKS AND RECREATION



NEXT STEPS:

1. Finish stakeholder engagement
2. County Board Member interviews
3. Create a draft plan outline
4. Create a draft plan

March 1, 2020 | 7:00 p.m. EST

