

# New Park at South Eads Street and Army Navy Drive

Online Engagement

March 17, 2021 –  
March 31, 2021





# Agenda

- Welcome
  - Public Process Timeline Update
- Presentation by LSG
  - Previous Design Options
  - Questionnaire Results
  - Refined Concept Plan
  - Design Guidelines Overview





# Public Process

- ~~Online Engagement #1~~
  - ~~Visioning Exercises~~

- ~~Online Engagement #2~~
  - ~~Design Concepts~~

- **Online Engagement #3**
  - **Refined Concept Plan**

- ~~September 30 – October 14~~

- ~~December 28 – January 15~~

- **March 17 – March 31**

*\*Dates may be updated as needed*







**New Park at South Eads Street  
and Army Navy Drive**

Park Concept Plan  
March 2021



## I. PREVIOUS CONCEPT OPTIONS



**The Meander**



**Canal Walk**



**Central Hub**







New Park at S. Eads









New Park at S. Eads



## II. QUESTIONNAIRE II FEEDBACK

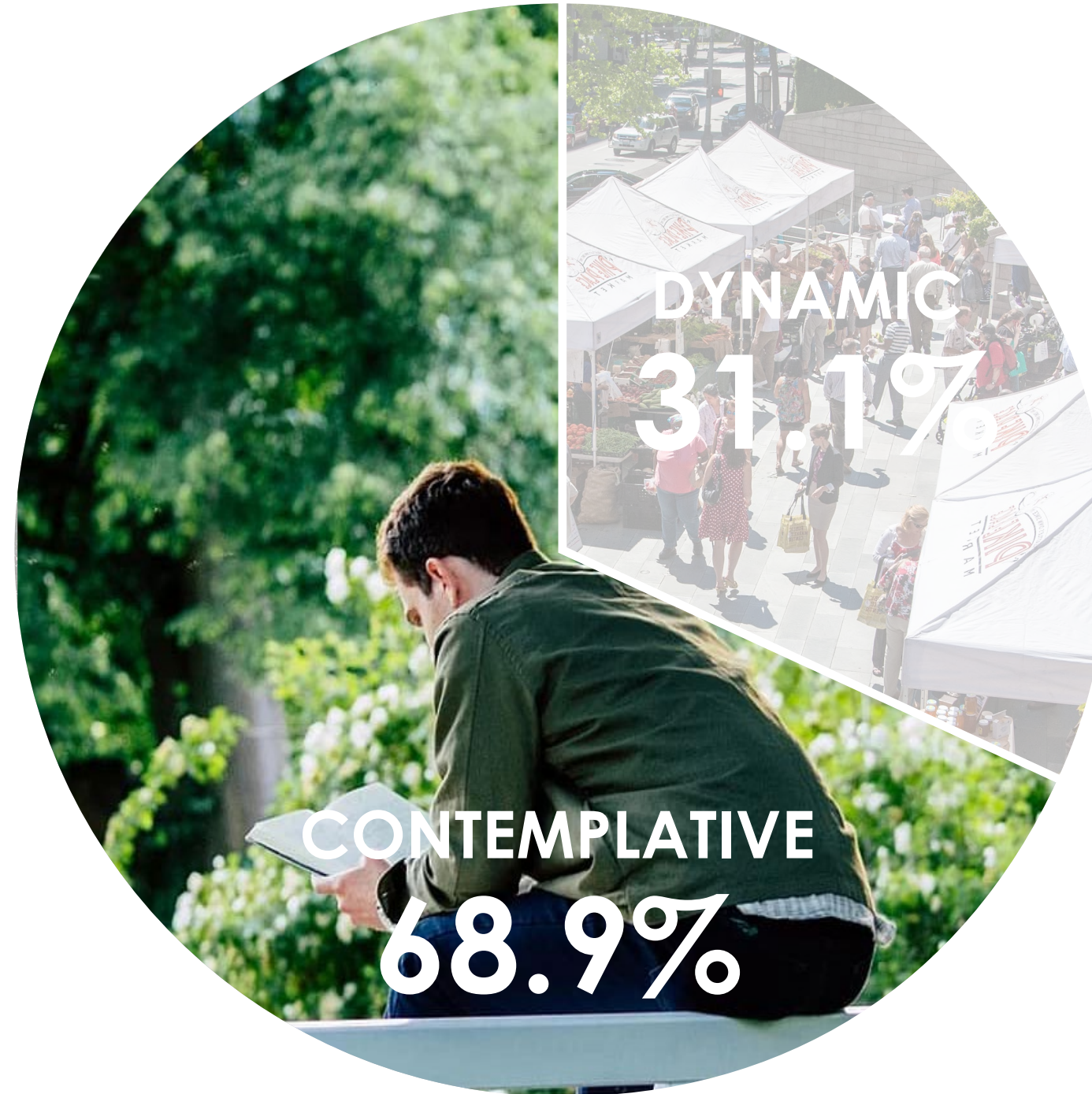


A monarch butterfly with its characteristic orange and black wings is perched on a cluster of small, light purple flowers. The background is a soft-focus green, suggesting a natural outdoor setting. A semi-transparent white rectangular box is overlaid on the image, containing the text "SETTING THE SCENE: PARK CHARACTER" in a bold, pink, sans-serif font.

**SETTING THE SCENE:  
PARK CHARACTER**



Park Environment:  
**CONTEMPLATIVE OR DYNAMIC**





*Path and Movement:*

# DIRECT CIRCULATION OR MEANDERING PATHS

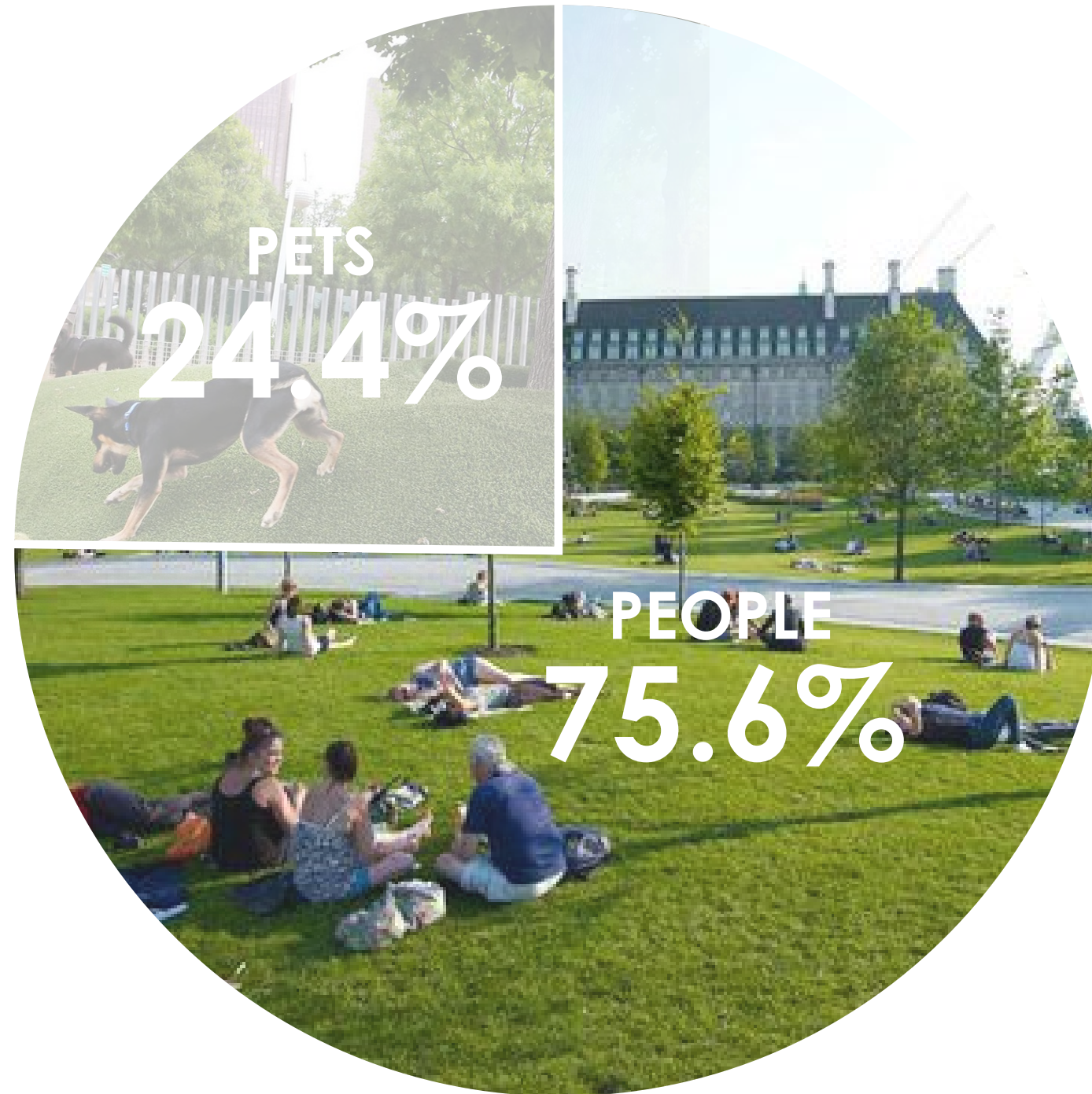


Type of Traffic Flow:  
**PEDESTRIANS OR CYCLISTS**





Open Space Users:  
**PEOPLE AND PETS**



Type of Seating:

# SPREAD OUT SEATING OR COMMUNAL SEATING



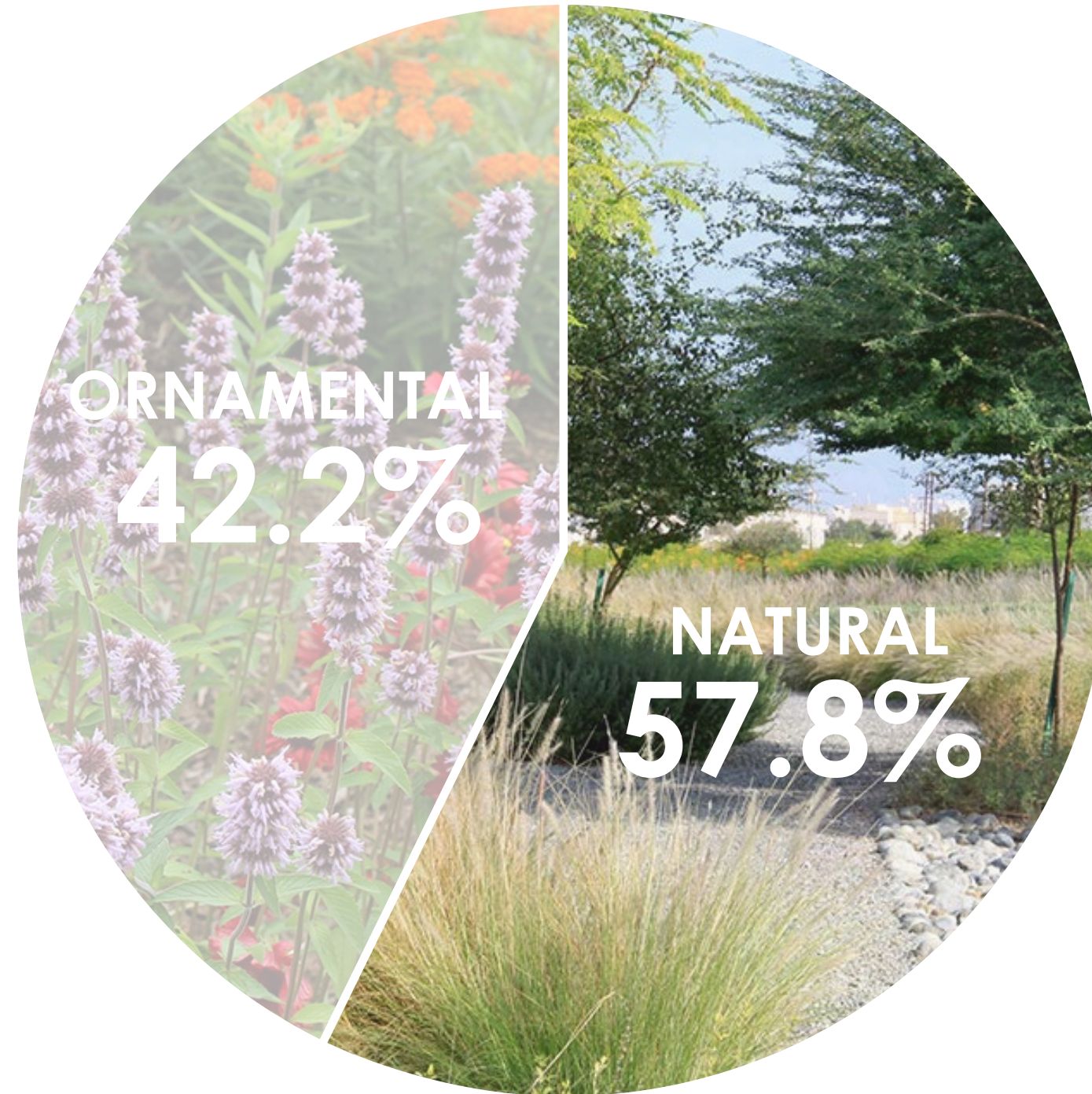


Type of Seating:  
**MOVEABLE SEATING OR FIXED SEATING**

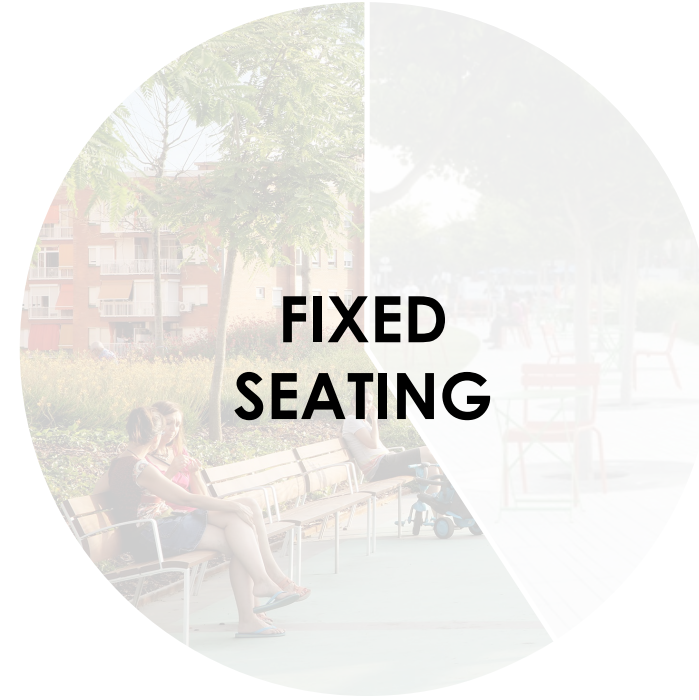




Planting Style:  
**NATURAL LANDSCAPE OR ORNAMENTAL LANDSCAPE**









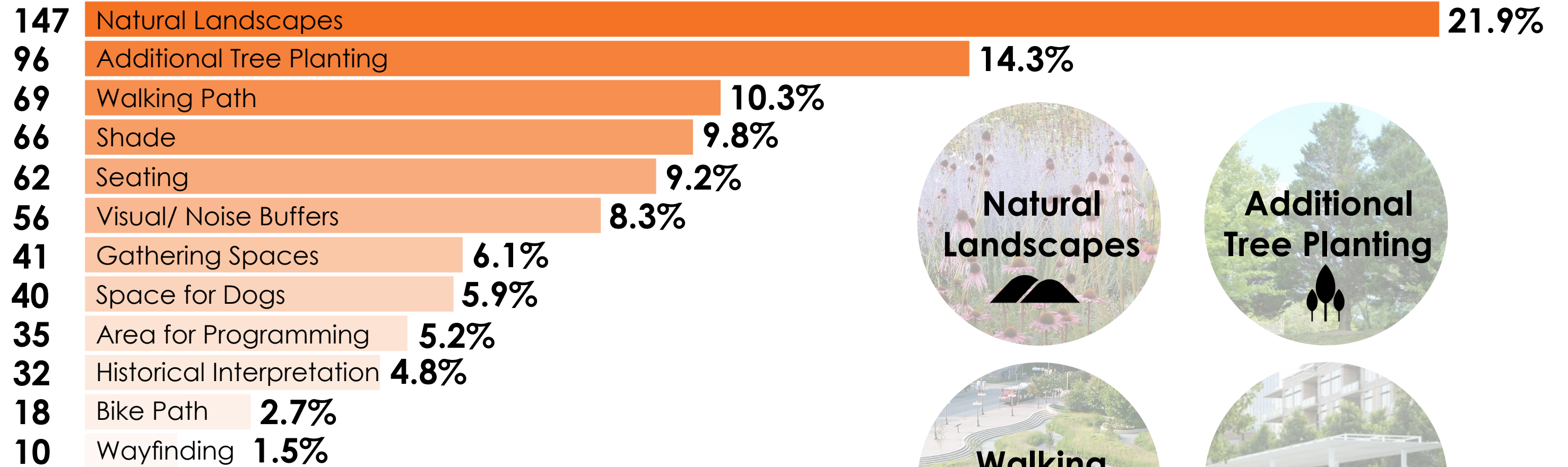
A woman in a black tank top and leggings is walking a brown and white dog on a pink leash. They are in a park with a large, blue, textured sculpture on a concrete base. The background is filled with lush green trees and a paved path. A semi-transparent white box is overlaid on the center of the image, containing the text "FINE TUNING: PARK ELEMENTS".

**FINE TUNING:  
PARK ELEMENTS**



# WHICH DESIGN ELEMENTS WOULD YOU BE MOST EXCITED TO SEE AT THE NEW PARK?

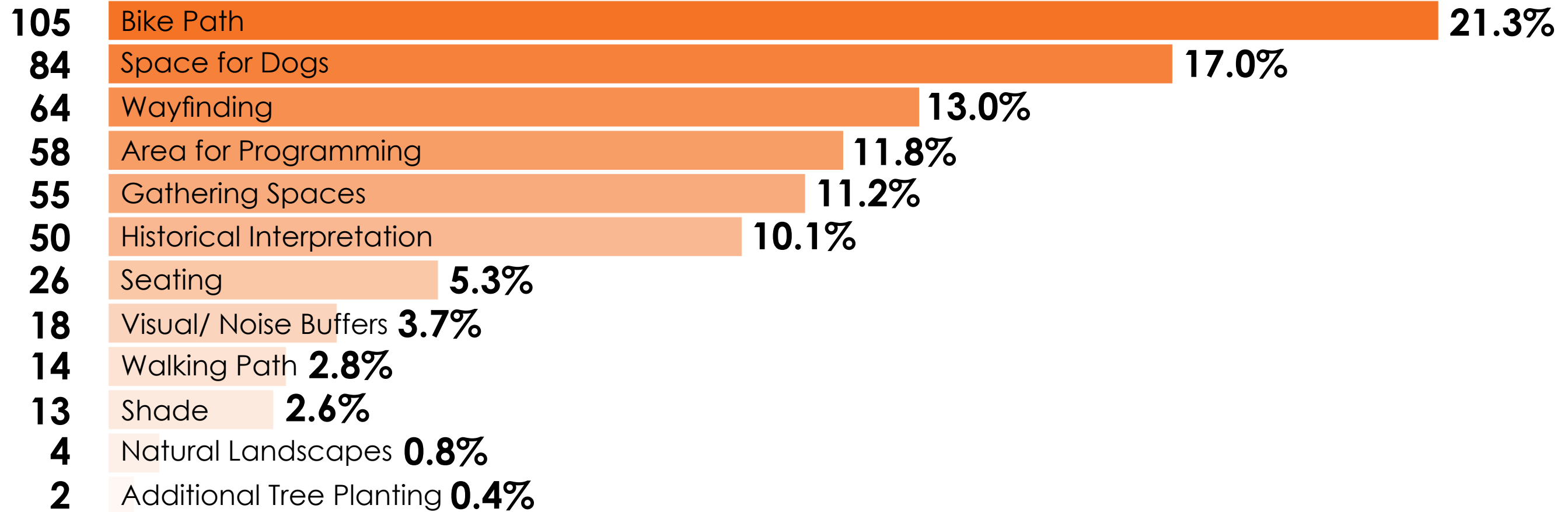
Select All that Apply





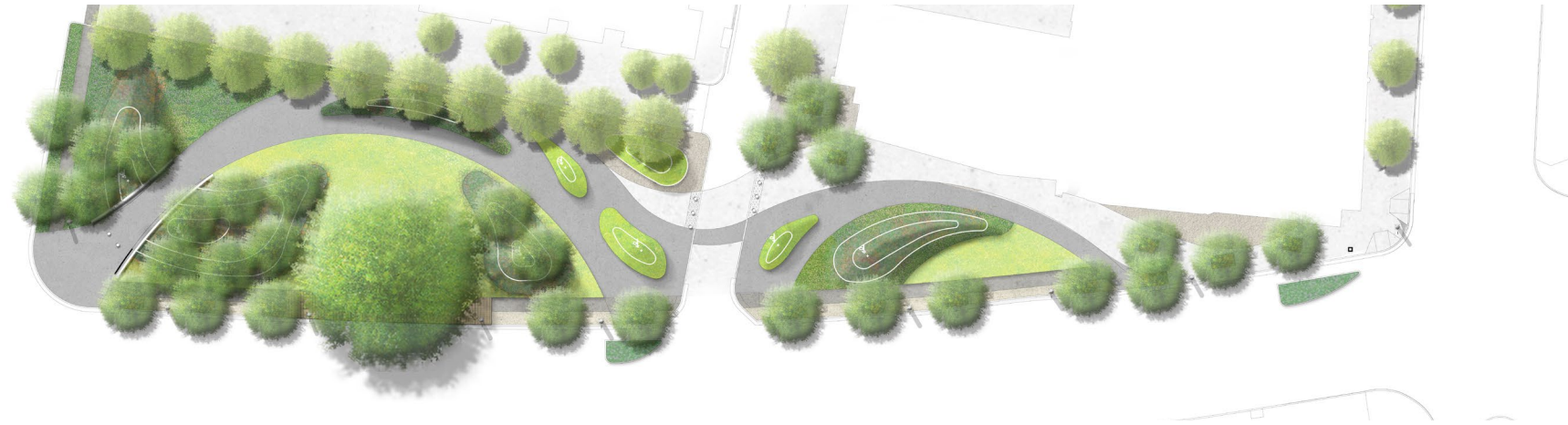
## WHICH DESIGN ELEMENTS WOULD YOU BE **LEAST** EXCITED TO SEE AT THE NEW PARK?

*Select All that Apply*





## The Meander - What did you like?



1.

**Overall, Feels the Most Green and Quiet**



“The park seem to create an enclosed, quiet atmosphere despite being so close to the city area.”

2.

**Fairly Simple and Not too Busy**

3.

**Immersive Natural Walk**



“Relaxed nature of the slow walk through the park; sense of being in nature.”

4.

**Pollinator Garden and Natural-Themed Elements**



“Opportunities for Creation of Meadows/ Pollinator/Native Wildflower Habitats.”



## The Meander: What did you dislike?



1.

**Too Much  
Hardscape and  
Synthetic Surface**



2.

**Not Enough  
Seating  
Opportunities**



3.

**There are no  
Clearly Defined  
Space for Dogs**



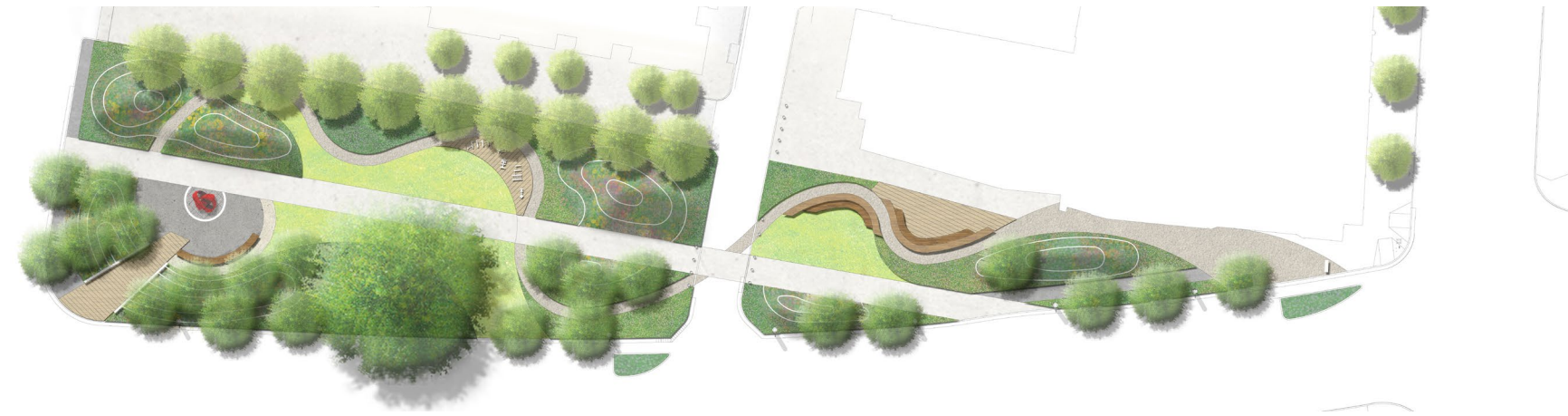
4.

**Concerns for  
Safety at 11th  
Street Crossing**





## Canal Walk: What did you like?



1.

### Built-in Seating



“I really like the platform benches. That combined with the retail plaza are very flexible spaces.”

2.

### Historic Marker



3.

### Fitness/Exercise Area



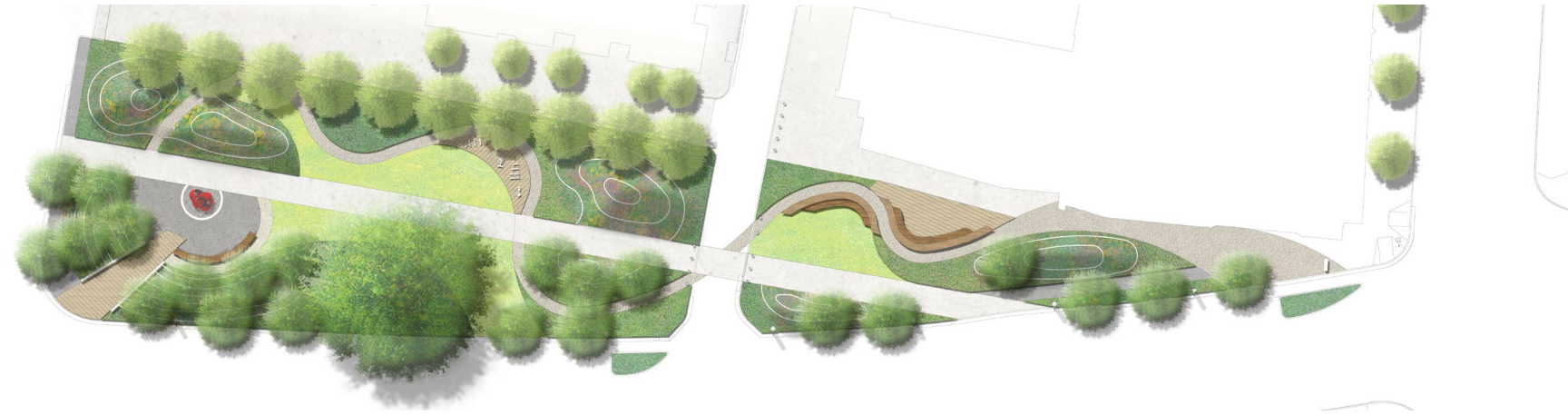
4.

### Artistic Design Element





## Canal Walk: What did you dislike?



1.

### **Straight Path and Concerns about Cyclist Speeds**

“Do not mix bicycle traffic with the pedestrians strolling around or children playing.”

2.

### **The Path Divides an Already Narrow Park and Reduces ‘Functional Spaces’**

3.

### **Too Much Hardscape**

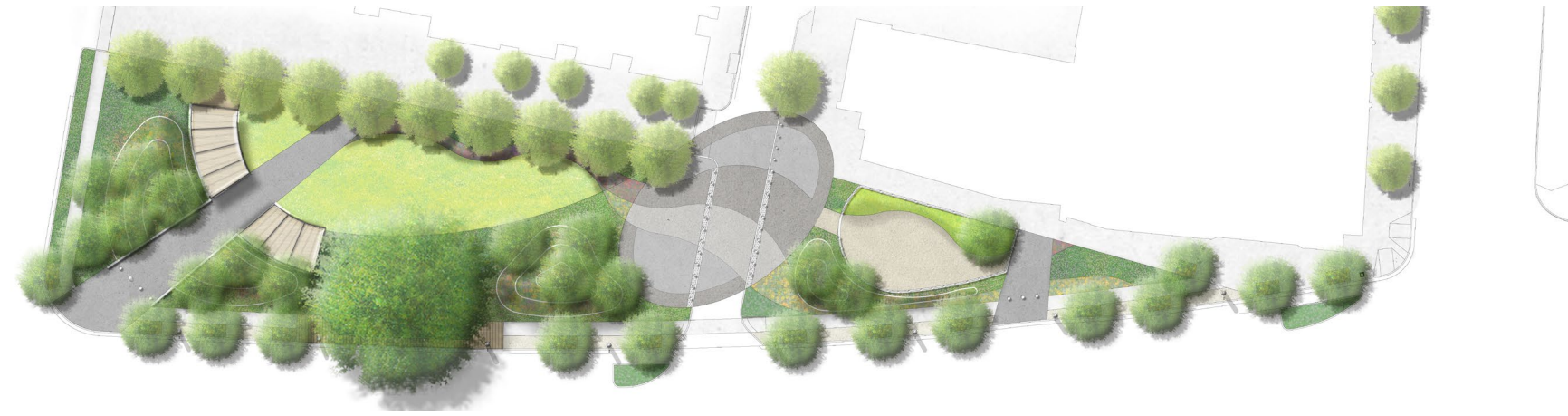
4.

### **Too Many Elements in the Small Area**

“Zones are set too close together for a quiet area.”



## Central Hub: What did you like?



1.

Shade



2.

Open Lawn  
Area



3.

Designated  
Dog Area





## Central Hub: What did you dislike?



1.

**Too Much  
Hardscape**



2.

**Plaza in the  
Center Has to  
Contend with  
Vehicular Traffic**

3.

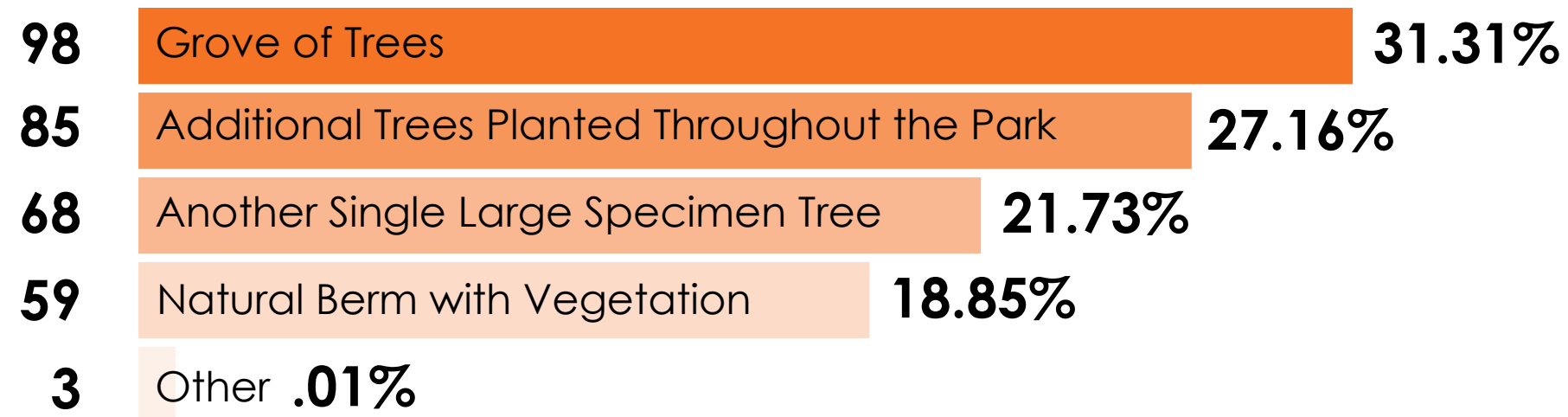
**Too Small for a  
Dog Run**

“It’s [too] small to have big areas for events or a dog run, if we can’t do it well don’t do it.”



## HOW WOULD YOU RANK THE FOLLOWING **POTENTIAL REPLACEMENTS** IF THE EXISTING COTTONWOOD TREE DOES NOT SURVIVE?

*Select Option*







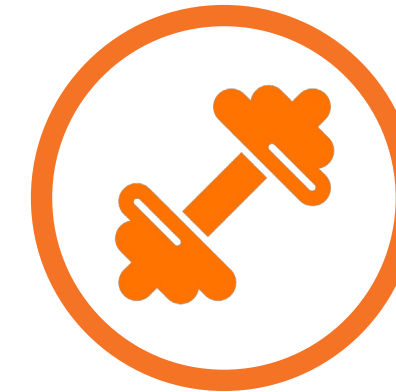
DOG SPOT



SEATING



POLLINATOR  
HABITAT



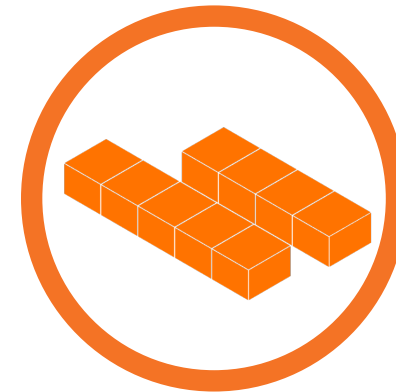
FITNESS  
AREA



OPEN LAWN



NATURAL LANDSCAPE



BUILT-IN  
SEATING



MEANDERING  
PATHS



LIGHTING



ARTISTIC DESIGN  
ELEMENT



SHADE



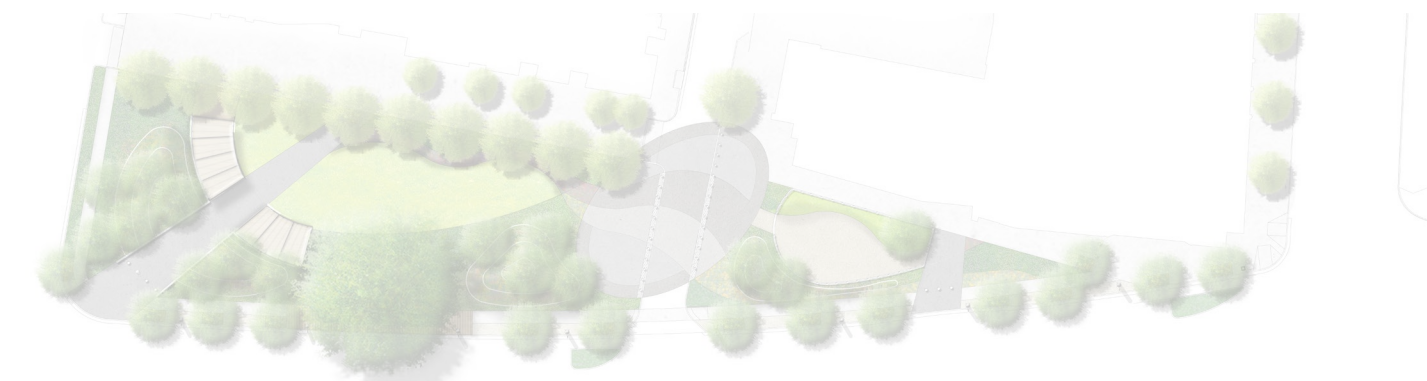
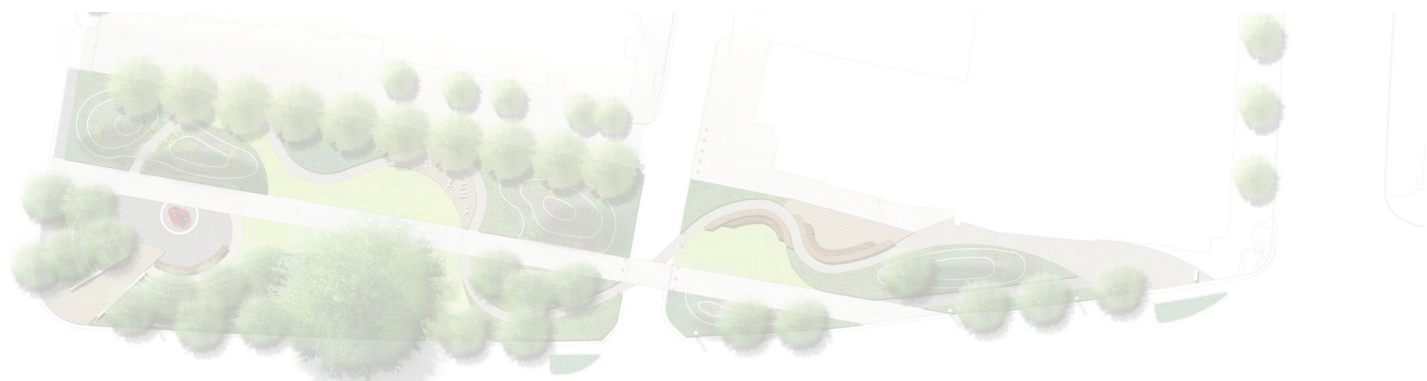
HISTORIC  
MARKER



### III. PARK CONCEPT PLAN



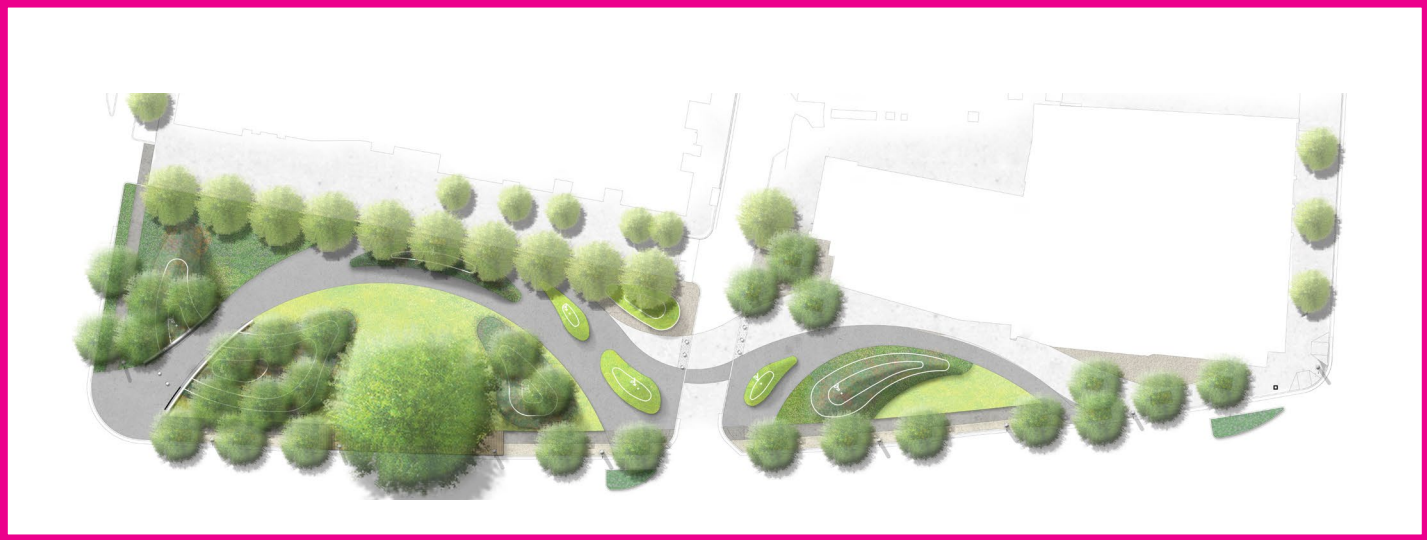
SELECTED FRAMEWORK



New Park at S. Eads



### SELECTED FRAMEWORK



### DESIRED PARK ELEMENTS



+

1. Too Much Hardscape and Synthetic Surface

2. Not Enough Seating Opportunities

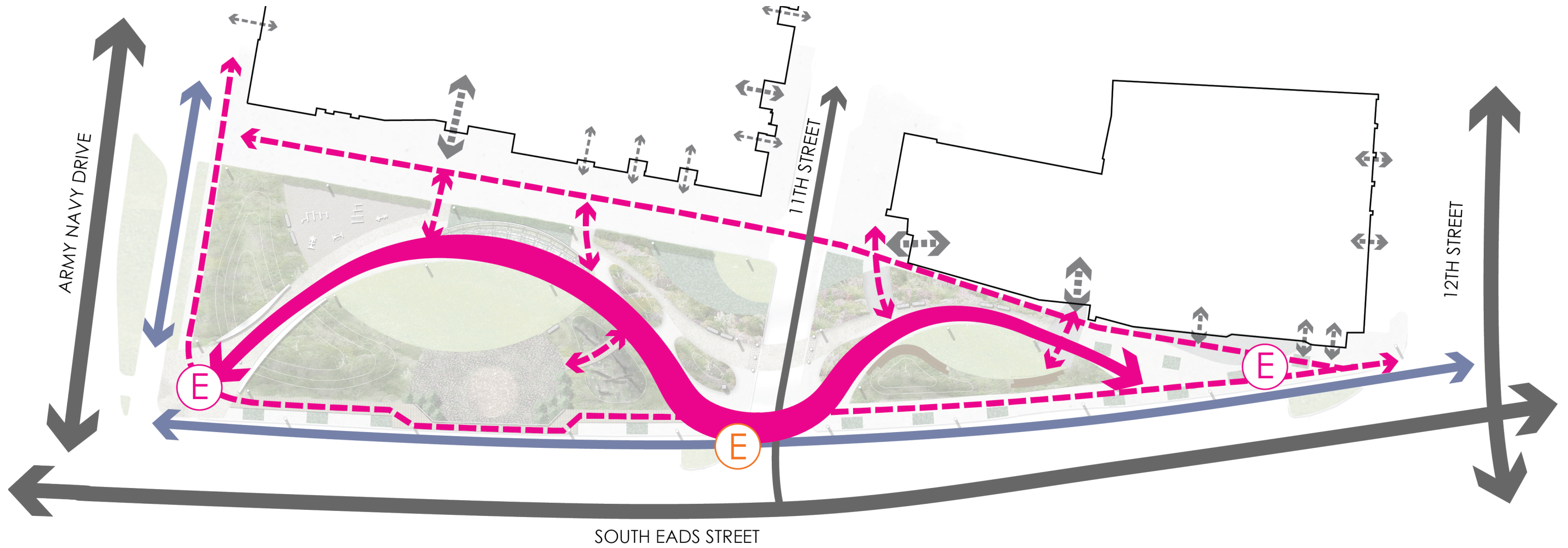
3. There are no Clearly Defined Space for Dogs








4. Concerns for Safety at 11th Street Crossing







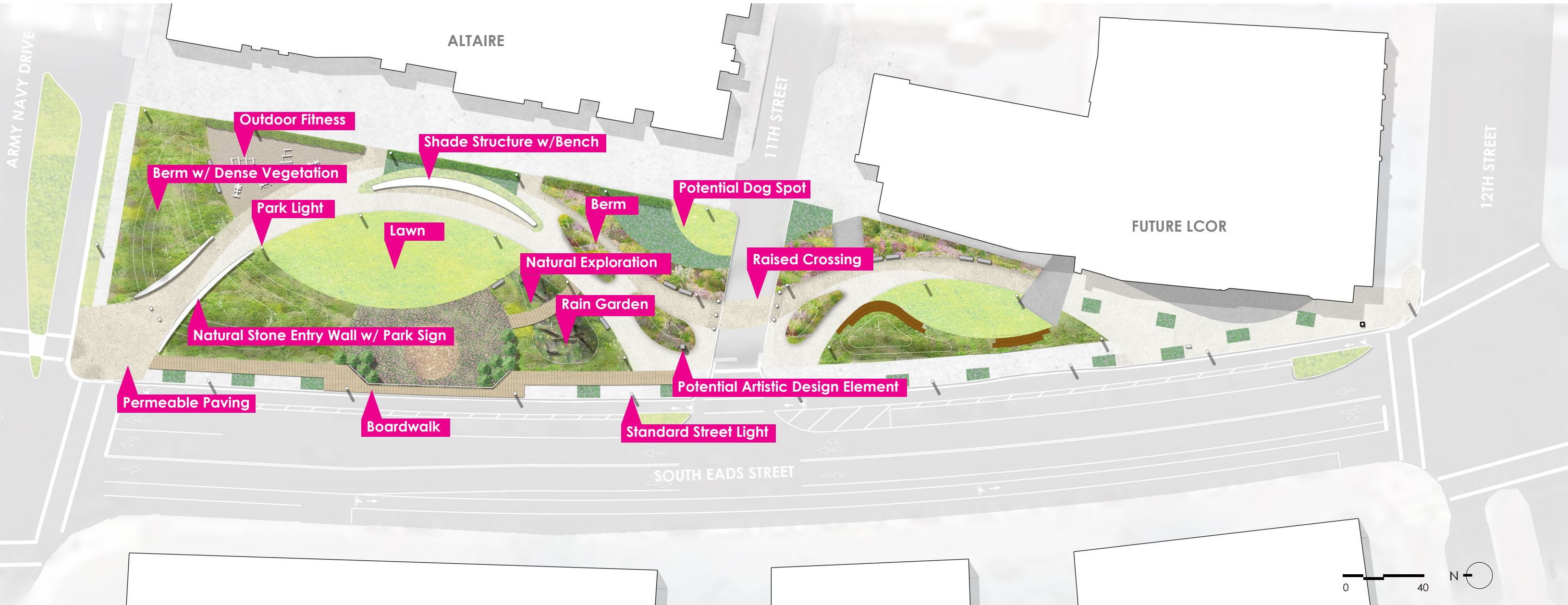


-  PROPOSED ENTRY
-  POTENTIAL ENTRY
-  PROMENADE
-  PEDESTRIAN ROUTE
-  VEHICULAR ROUTE
-  BIKE ROUTE
-  BUILDING ENTRANCE

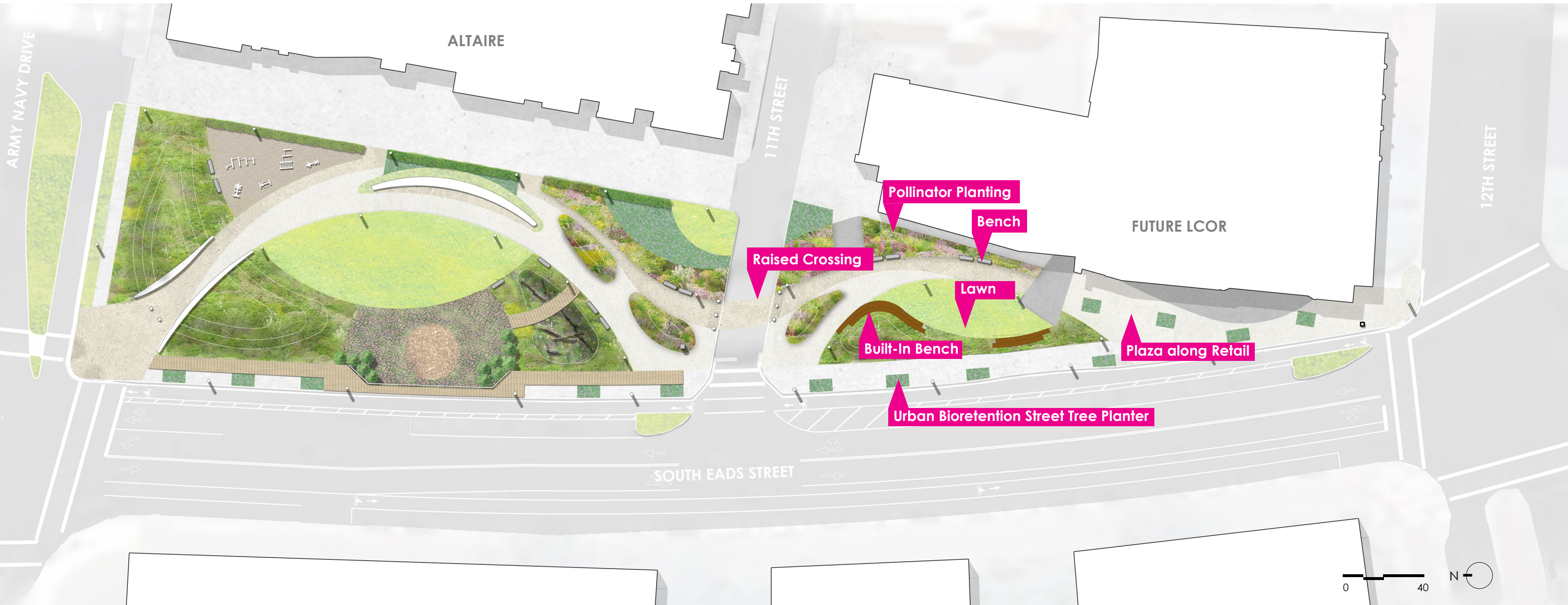














# Integrating Desired Park Elements

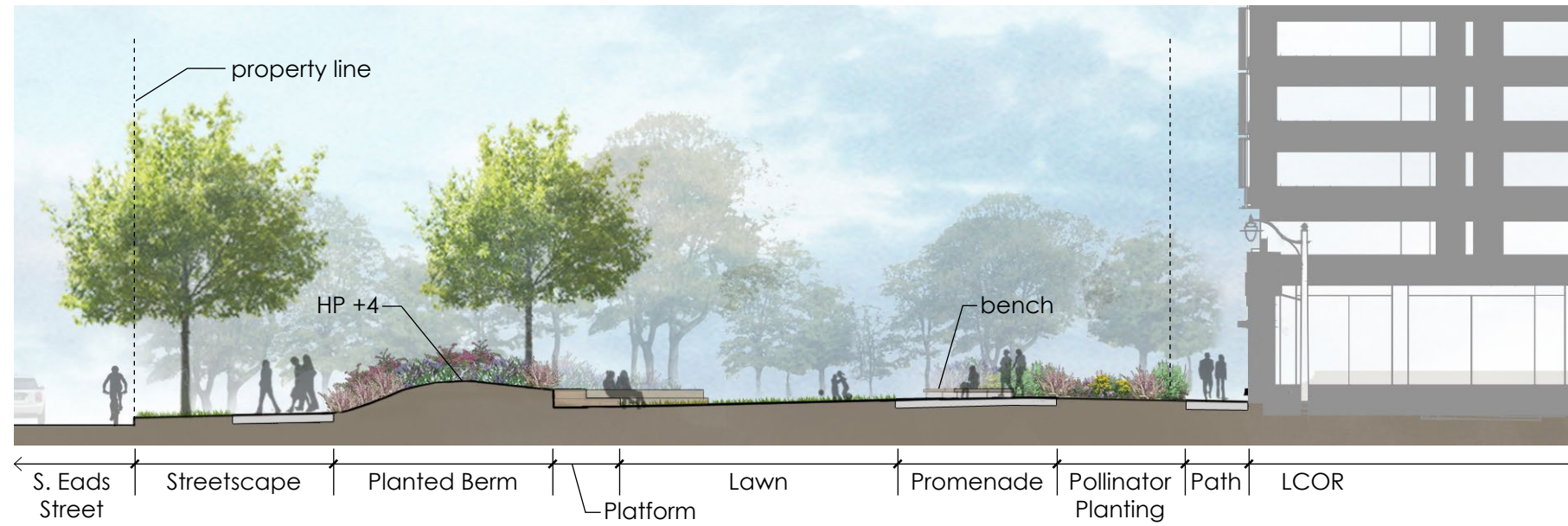


- |  |                          |  |                     |  |                 |  |                         |
|--|--------------------------|--|---------------------|--|-----------------|--|-------------------------|
|  | NATURAL LANDSCAPE & BERM |  | DOG SPOT            |  | SHADE STRUCTURE |  | ARTISTIC DESIGN ELEMENT |
|  | ADDITIONAL TREES         |  | ADDITIONAL LIGHTING |  | SEATING         |  |                         |
|  | OPEN LAWN                |  | BUILT-IN SEATING    |  | HISTORIC MARKER |  |                         |
|  | POLLINATOR HABITAT       |  | OUTDOOR FITNESS     |  | MEANDERING PATH |  |                         |

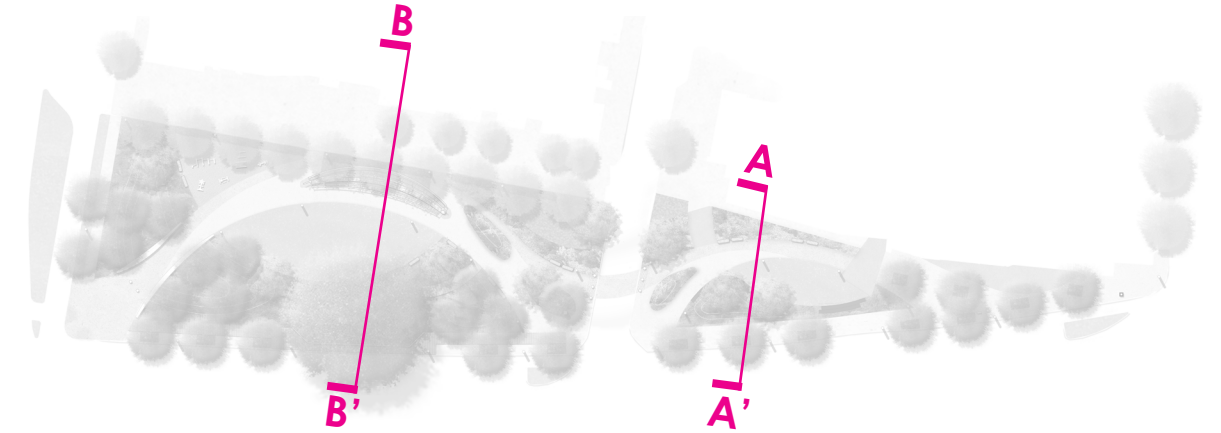
## New Park at S. Eads



# Sections



SECTION A-A'



SECTION B-B'

## New Park at S. Eads









New Park at S. Eads









New Park at S. Eads





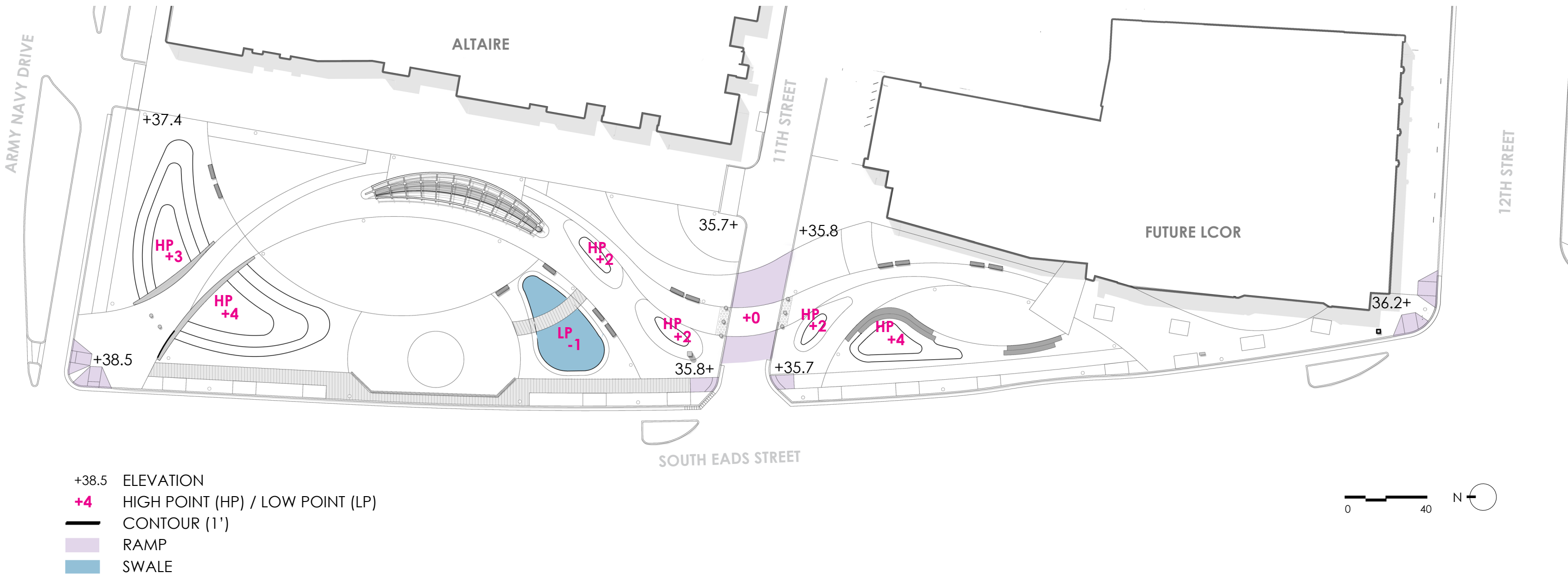






## IV. DESIGN GUIDELINES

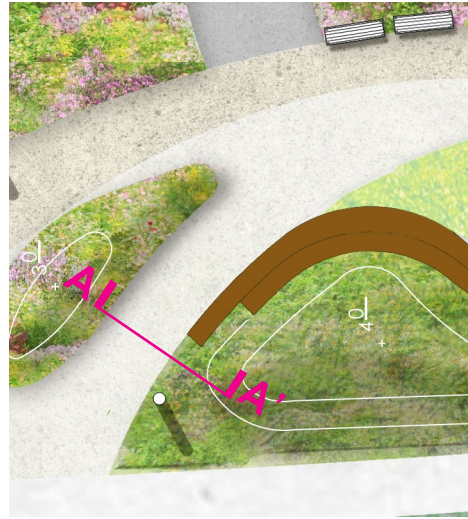




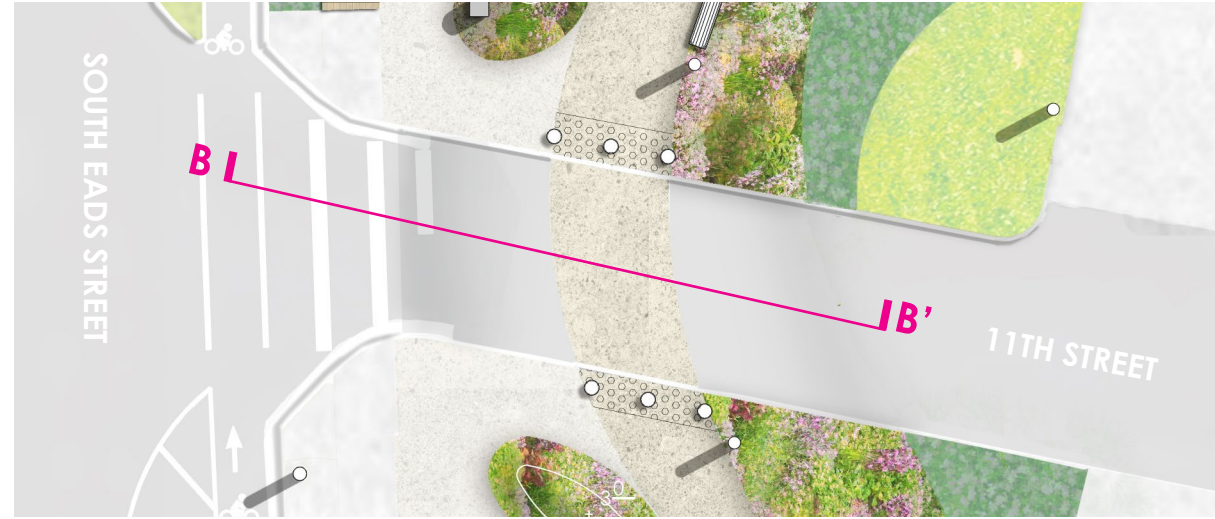
## New Park at S. Eads



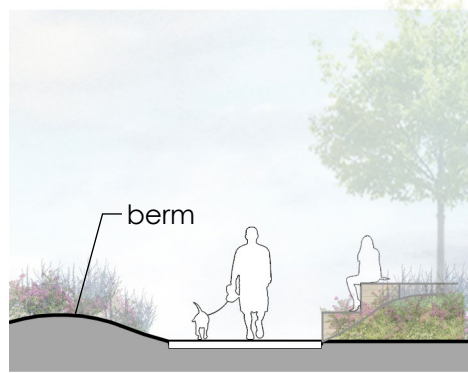
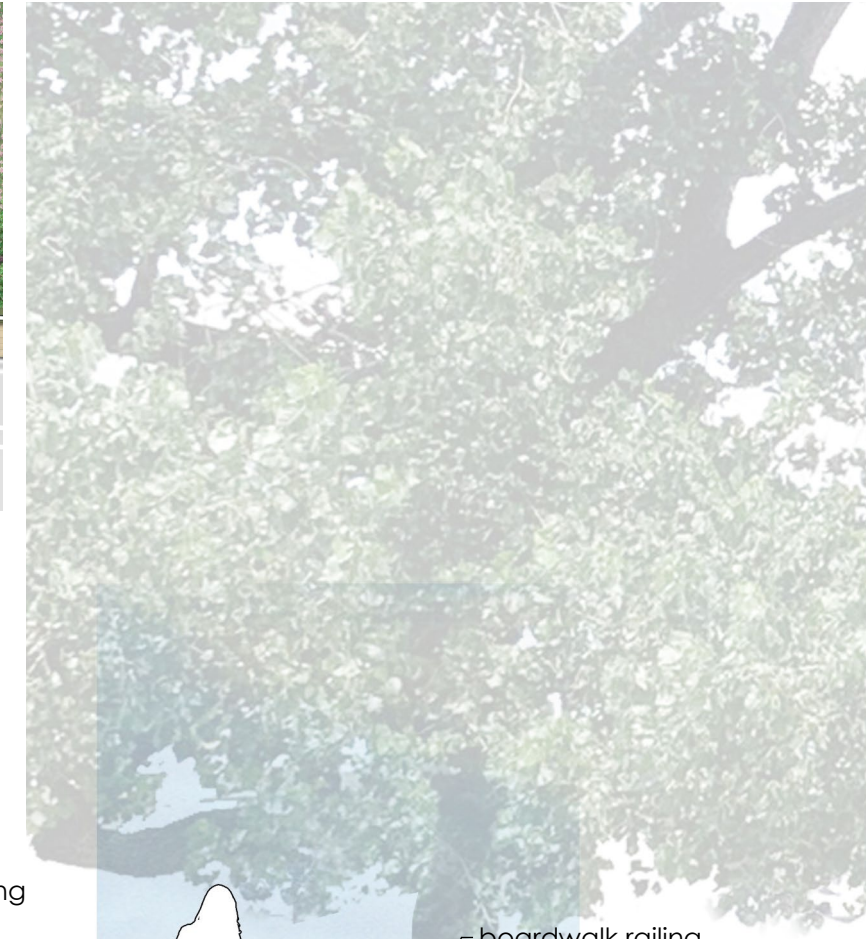
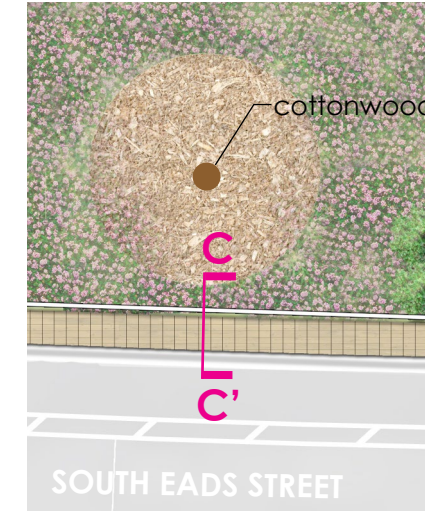
## PROMENADE



## 11TH STREET CROSSING



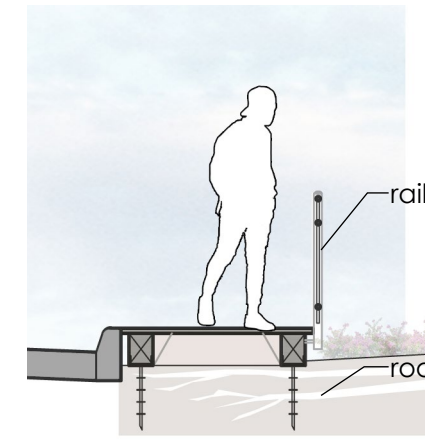
## BOARDWALK



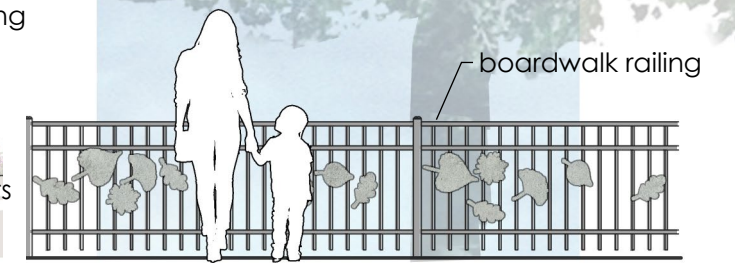
SECTION A-A'



SECTION B-B'



SECTION C-C'





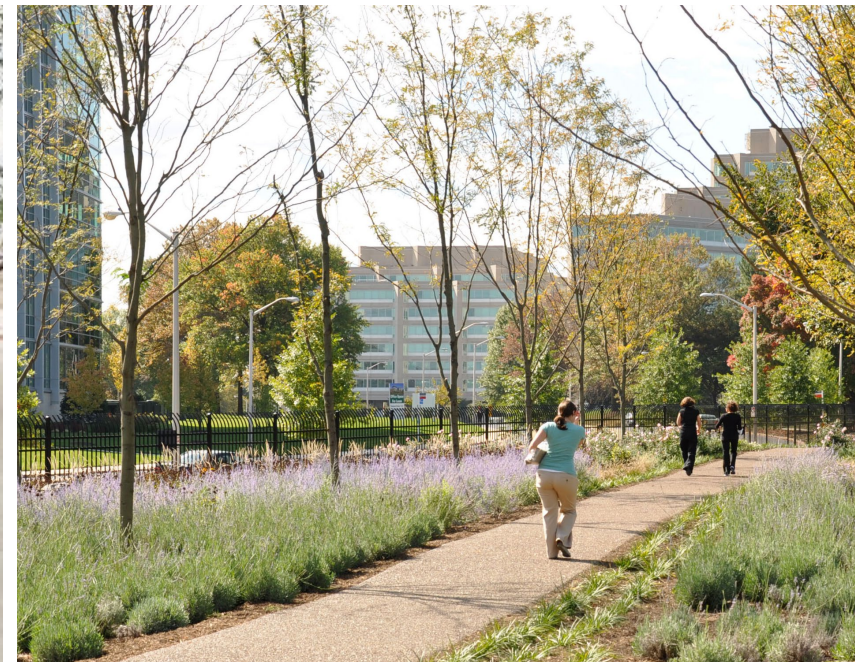
# Material Palette



Historic Marker



Boardwalk



Flexible Porous Pavement



Permeable Paving



Stamped/tinted Concrete





- |                             |                    |
|-----------------------------|--------------------|
| Existing Planting to Remain | Meadow Planting*   |
| Native Shrubs*              | Rain Garden*       |
| Lawn                        | Urban Bioretention |
| Mulch w/ Groundcover        |                    |
- \* Planting Palette to Include Pollinator and Other Species Support



Open Lawn



Berm with Natural Planting





Meadow Planting



## New Park at S. Eads





-  Platform Benches
-  Built-in Bench
-  Park Bench
-  Log Bench - Natural Exploration
-  Moveable Furniture by Retail Tenant
-  Pet Waste Station
-  Trash/Recycling
-  Bike Racks



trash/recycling    typical bench    platform bench    log bench    pet waste station    bike rack

## New Park at S. Eads





- Existing Light
- Ground-washing Linear Light
- Area Light
- ✱ New Street Light
- + Shade Downlight
- Illuminated Signage/Artistic Design Element



Area Light

Gateway Signage/Artwork

Ground-washing Linear Light

## New Park at S. Eads





Bioretention

Permeable Pavement

Urban Bioretention



Bioretention



Urban Bioretention



Permeable Paving

## New Park at S. Eads

Arlington, VA

February 2021





New Park at S. Eads





## New Park at S. Eads

Arlington, VA

February 2021



