

**Sports Commission Meeting
Thursday January 22, 2015
Fairlington Community center
Time: 7:00-9:00 PM**

AGENDA

- I. **Approval of last meeting minutes.**
- II. **Gymnastics/Aquatics TEAM Work Group Update**
- III. **Aquatics Work Group Update**
- IV. **TJ Work Group Update**
- V. **Wilson School Update**
- VI. **Letter in Sun Gazette about 13 and under baseball**
- VII. **Themes & Projects work**

Upcoming Meetings:

Thursday February 26, 2015 at Fairlington Community Center, 7pm.

Arlington County Sports Commission

Draft Meeting Minutes

Date: Tuesday November 25, 2014

Time: 7:00pm

Place: Fairlington Community Center, 3308 S. Stafford St., Arlington VA 22206

Attending:

Craig Esherick, Chair	Steve Severn, Member
Stacy Chouinard, Staff Liaison	George C. Towner, Jr., Member
Debbie DeFranco, APS Liaison	Larry McBride, ASBR
Shirley Brothwell, Member*	John Foti, CRBR
Heather Coccozza, Member	John Blevins, DPR Staff
Mauricio Coreas, Member	Kurt Lewis, DPR Staff
Regina Kouba, Member	Ryan Amato, DPR Staff
Doug Ross, Member	

Members Absent: Ellen Killalea, Asha Patton.

Agenda*:

- I. Review & approve 10/23/14 Sports Commission meeting minutes.
- II. Diamond field fund discussion.
- ~~III. Arlington Little League – Intermediate division including 13 year olds.~~
- IV. Work Group Updates:
 - a. TJ Work Group
 - b. Wilson School
 - c. Gymnastics
- V. Review Goal Statement Topics
- VI. ~~Tentative~~– Kevin Carey – Gender Equity (5 minutes)

Agenda Item	Discussion, Consensus & Action Items
I. Introduce New Sports Commission Members (7:04-7:05:pm)	Craig introduced Regina Kouba & Steve Severn.

<p>II. Kevin Carey – Gender Equity (5 minutes) 7:05-7:19pm</p>	<p>Mr. Carey proposed that girls ages 10 compete with boys ages 8. He suggested that Arlington County try this pairing out in the community. Sport can be a way to get girls and boys playing competitively so they can respect each other when they become adults. There is a physical deficit between the leg speed of girls and boys. Currently Little League, ABR, Football and Saturday Morning Basketball are coed. In the schools, some sports have different genders playing together.</p>
<p>III. Field Fund Discussion (7:20-8:00pm)</p>	<p>The original proposal was created using a litmus test which included getting more people to play. Clarification was mad that diamond field money may be used to enhance CIP projects. Currently the leagues cannot also contribute money however DPR is working on a policy/procedure for this. This should be completed next year but if there is a need sooner speak with DPR directly. Diamond Field Fund money may be spent on batting cages and/or carry over each year. Discussion was on installing batting cages at TJ, Westover, Tuckahoe and Arlington Traditional School. Process for construction on APS property is different than the DPR process. CIP is a rough schedule, not all funds are allocated. Groups may ask that a CIP project be moved up or back in the timeline. The Bluemont site itself is ap art of the RPA which adds complexity to the site.</p>
<p>IV. Approval of October meeting minutes. (8:01-8:03pm)</p>	<p>Changes proposed and approved: Add Appendix B. Remove Steve and Reggie as they were not aware of their appointments.</p>
<p>Consensus</p>	<p>Meeting minutes approved.</p>
<p>V. Approval of September 25, 2014 meeting minutes. (7:53-7:55pm)</p>	<p>Question was raised; do we have to include enter later/leave early times? It keeps accurate records of attendance.</p>
<p>Consensus</p>	<p>Meeting Minutes were approved.</p>
<p>VI. Work Group updates (8:11-8:25pm)</p>	<p>Wilson School is all TBD for now, no update.</p> <p>Gymnastics workgroup distributed a survey through Open Arlington. It was sent out to 20,000 emails, so far 784 individuals read the page, 353 responded. Recommendation is to modify fees for gymnastics. Revenue exceeds the target set for cost recover. The non-resident surcharge recommendation is that the surcharge should be tied to something, benchmarking currently considering a 10% surcharge with a cap of \$200 per person per year. The civic engagement has so far been limited to the survey and website, there will be more civic engagement after the focus is off fees and onto the operating model.</p>

	There is currently a website and a PPT on the website for the public to view.
<p>VII. December Meeting Date (8:26-8:29pm)</p>	<p>The December Sports Commission meeting is the same time as a budget meeting. It will be rescheduled. The procedures for the agenda will be; a proposed agenda will go out one week before the meeting. Members may ask to add agenda items at any time. Once the proposed agenda is out members have one day to request changes. Agenda must be sent out to the public at least 3 days prior to the meeting.</p>
<p>Action Item</p>	<p>Craig will send an e-mail to set the next meeting day.</p>
<p>VIII. Sport User Group RFP Update. (8:30-8:43pm)</p>	<p>The contract should be awarded in January. It will be a 9-12 month process. The work will help with field allocation by creating an objective process. It will also help with overall County resource allocation for sport user groups. Part of it is a diamond and rectangular field space analysis looking at usage patterns, field conditions and amenities. The process will be inclusive. End goal is to have an implementation plan for field space allocation.</p>
<p>IX. Review Goal Statement Topics (8:44-9:04pm)</p>	<p>A handout was distributed, Appendix A. Soccer is not building an indoor facility this year. The aquatics committee holds an annual forum; that is a good way to engage creative thinking.</p>
<p>Action Item</p>	<p>Send Craig your favorite and second favorite. Do not send to all, just Craig.</p>

J. Walter Tejada, County Board Liaison

Attest:

Stacy Chouinard, Staff Liaison

Appendix A

Themes

- 1 Use county and school facilities more creatively to facilitate more practice and game time for county residents that play sports
- 2 Use partnerships more creatively to facilitate the building of new facilities, the maintenance of current facilities and the purchase of more land to build more facilities
- 3 Develop new ideas for partnerships with chamber of commerce, local businesses, local universities, local professional sports franchises, etc
- 4 Encourage the building of lights for more sports fields to give county teams and individuals more opportunity to participate in recreation and sports
- 5 Work more closely with other commissions to accomplish our goals
- 6 Get involved in the public spaces master planning process
- 7 Get a seat at the table with developers when they are planning new projects in the county
- 8 Lobby for purchase of new land by the County to build athletic fields
- 9 Work better and smarter with DPR, County Board and School Board
- 10 Solicit new ideas from adult sports participants and adult team coaches
- 11 Establish a commission presence on all new committees that may impact the business of the ASC
- 12 Develop the latest information about artificial surfaces and their safety
- 13 Encourage participation in the ASC by groups not yet involved

Projects

- 1) Find an alternative location for indoor hockey, indoor soccer and the basketball group that all use space at Barcroft Recreation Center
- 2) Expand the gymnastics facility one year earlier than proposed on the most recent CIP
- 3) New batting cages at four locations in the county
- 4) Refurbish infields at Bluemont with artificial surfaces
- 5) Boat house on Arlington County side of the Potomac River to be used by all of the APS rowing teams and recreational rowers
- 6) Build a new pool somewhere in the county soon
- 7) Build a new indoor soccer facility in the county soon
- 8) Build a state of the art school with state of the art indoor and outdoor athletic fields and courts, making use of this valuable piece of property for those at the school, DPR and taxpayers who live nearby in Rosslyn
- a) Aggressively participate in the process that DPR will initiate with the help of a consultant to allocate field use for county teams

Arlington County Sports Commission

DRAFT Meeting Minutes

Date: Wednesday December 17, 2014

Time: 7:00pm

Place: Room 129, 3700 South Four Mile Run Drive, Arlington VA 22206

Attending:

Craig Esherick, Chair	Doug Ross, Member
Stacy Chouinard, Staff Liaison	Steve Severn, Member
Shirley Brothwell, Member	George C. Towner, Jr., Member
Heather Cocozza, Member	John Foti, CRBR
Ellen Killalea,	John Blevins, DPR Staff
Regina Kouba, Member	

Shirley Brothwell attended through telephone beginning at 8:01 due to personal matter. Her location during the call was her residence in Arlington County.

George Towner entered at 7:18. John Blevins entered at 7:35

Members Absent: Asha Patton. Debbie DeFranco, APS Liaison, Mauricio Coreas, Member

Agenda:

- I. Approval of last meeting minutes.
- II. TJ Working Group Update
- III. Wilson School Update
- IV. Themes & Projects work
- V. Update from AYBA
- VI. Diamond Field Fund Proposal

<u>Agenda Item</u>	<u>Discussion, Consensus & Action Items</u>
I. Friends of TJ Park discussion (7:09-7:40pm)	Hands were given and are in Appendix A titled Friends of TJ Park. Friends of TJ park was formed last May when TJ was considered as a site for an Arlington Public School addition. Currently east of the community center is not being considered for building. The handout includes information on possible layouts and expected attendance

	<p>changes. If construction is done on site it is preferred that no trailers are put on park land. The county board will consider the work groups recommendations in January. A letter from the Sports Commission was requested to be sent. Important to note that the same people that need more seats in schools will need recreation space.</p>
Action Item	<p>Craig Esherick will draft up a letter to the County Board regarding the use of TJ as a school site.</p>
<p>II. Approval of last meeting minutes. (7:40-7:43pm)</p>	<p>The appendix includes the wrong attachment for the themes document, the attachment will be changed and labeled. There was discussion that indoor facilities have been removed from the scope of work for the Sport User Group RFP; that will be added to the notes.</p>
Consensus	<p>Meeting minutes approved with the above changes.</p>
<p>III. Update from Arlington Youth Baseball Association (AYBA) (7:44-8:11pm)</p>	<p>Focus of AYBA is to make sure Arlington youth can play baseball together. There is currently good communication across organizations with monthly meetings. There was a Spring clinic that involved both Arlington Little League and Call Ripken Babe Ruth and had high school players working with the youth. County staff has been working with AYBA on field maintenance. Adopt a field is off the ground and going. AYBA encourages parents to be engaged. AYBA advocates for field space with the preference being for diamonds but they care about all field space. There are 2 new board members. With the increase in APS enrollment there is a concern that use of field space for schools may be considered for future schools. AYBA would like a plan for how fields will be used in the future. They are excited to work with the Sport User Group RFP consultant. Knowing when meetings regarding fields are being held is important. APS talks has a mailing list the public can sign up for. Could ask that the County manager create one space for meeting notices. There could be a brainstorming session with all field users to get creative ideas to solve field use problems and those ideas could be sent to the County Board and School Board. Perhaps every sport group should send their ideas in ahead of time along with how to implement.</p>
<p>IV. Diamond Field Fund Proposal. (8:12-8:pm)</p>	<p>A PowerPoint handout is attached in appendix B labeled Diamond Field Fund Proposal which includes the proposal. The proposal includes spending up to \$25,000 of field fund monies for batting cages at 4 specific locations and also the continued collection of monies with the goal of enhancing Bluemont Park. There is a contractor that has offered to sell the materials at cost for the project. The Staff Liaison clarified that we must follow county purchasing policies and procedures.</p>
Consensus	
Action Item	<p>The Sports Commission voted and approved the proposal.</p>

Craig Esherick will send a letter to DPR Director Jane Rudolph with the approved recommendations.

V. Wilson School Update

A letter was shared that that Parks and Recreation Commission sent to Jay Fiset, County Board Chairman. The letter is attached in appendix C labeled Wilson School Letter. There will be a vote tomorrow on moving HB to Wilson school. Craig would like to write something similar supporting open space in regards to TJ.

Action Item

Craig Esherick will draft a letter.

VI. Gymnastics and Aquatics Team Working Group

The workgroup has continued to meet. There were 567 total responses to their survey. The workgroup will draft a recommendation letter to the County Manager in January. Currently they are addressing the team fees. The survey showed support for lowering fee's for the teams to the level of 85-10% cost recovery, a 10% non-resident surcharge with a cap of \$200 per year maximum.

J. Walter Tejada, County Board Liaison

Attest:

Stacy Chouinard, Staff Liaison

Appendix A

Friends of TJ Park



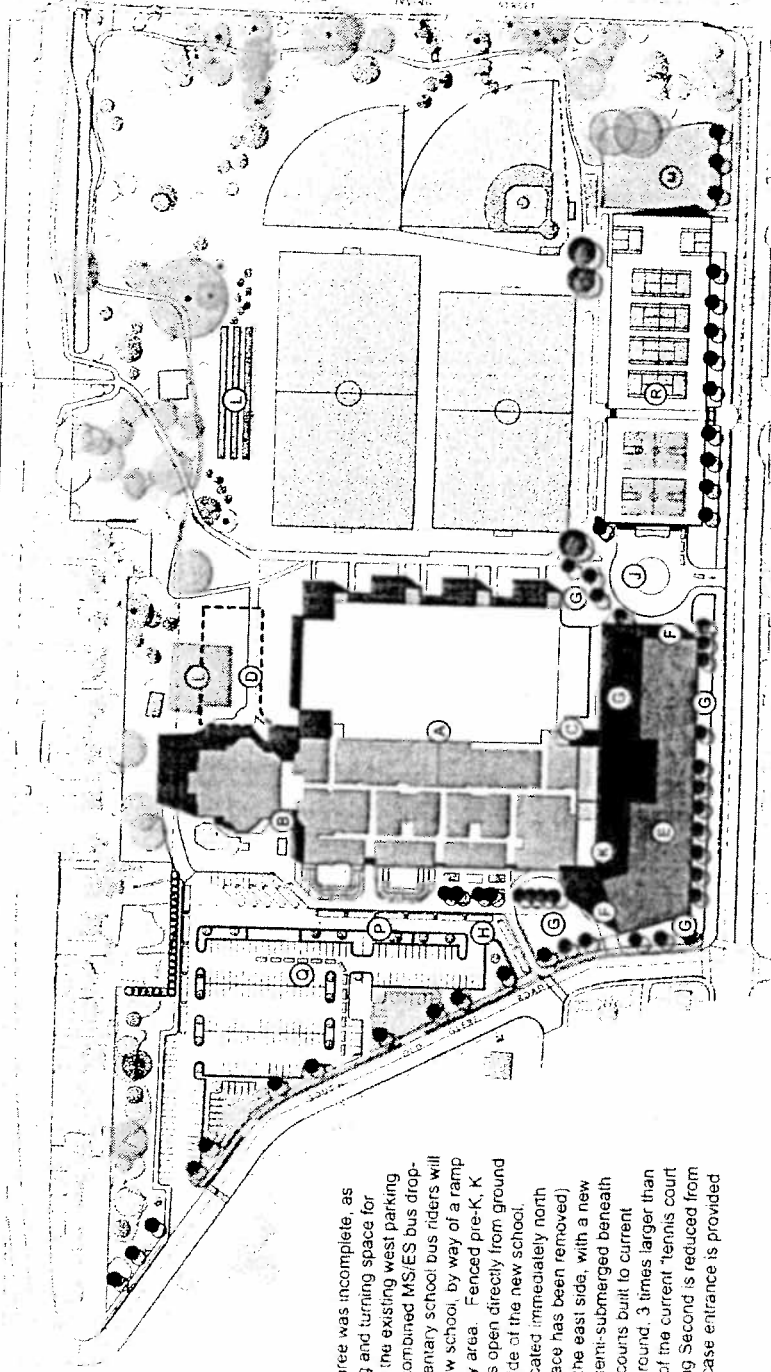
Arlington Public Schools

NES at Thomas Jefferson, scheme 3

18 October, 2014 (original)

20 November, 2014 (update)

existing MS capacity: 982
new ES capacity: 725
future expanded MS capacity: 1,300



Proposed Site Plan

The previous version of scheme three was incomplete, as it didn't allow for adequate queuing and turning space for buses. The revised version keeps the existing west parking lot as-is. MS parent drop-off and combined MS/ES bus drop-off occurs in the existing lot. Elementary school bus riders will enter on the second level of the new school, by way of a ramp circling around a dedicated ES play area. Fenced pre-K, K and Grade 1 play and garden areas open directly from ground level classrooms along the south side of the new school, with additional new playgrounds located immediately north of the building. (All rooftop play space has been removed) The main entrance to the ES is on the east side, with a new drop-off loop and queuing/parking semi-submerged beneath reconfigured tennis and basketball courts built to current standards. A new community playground, 3 times larger than existing, is provided in the location of the current "tennis court lot". The number of driveways along Second is reduced from seven to two and a new grand staircase entrance is provided into the park.

- (A) Existing TJ Middle School + Community Center
- (B) Middle School Entrance
- (C) Community Center Entrance
- (D) Area of future MS expansion
- (E) New Elementary School
- (F) Elementary School Entrance
- (G) Dedicated ES play space
- (H) ES Bus Queue/Drop
- (J) ES Auto Queue/Drop
- (K) Combined Service Yard
- (L) Community Garden (relocated in future?)
- (M) New Community Playground, 3x larger
- (N) Playground Drop-Off
- (P) MS Bus Queue/Drop
- (Q) MS Auto Queue/Drop
- (R) New courts over parking with a grand staircase entrance to Park.



Proposed Parking Deck Plan



Adlington Public Schools

NES at Thomas Jefferson, scheme 2

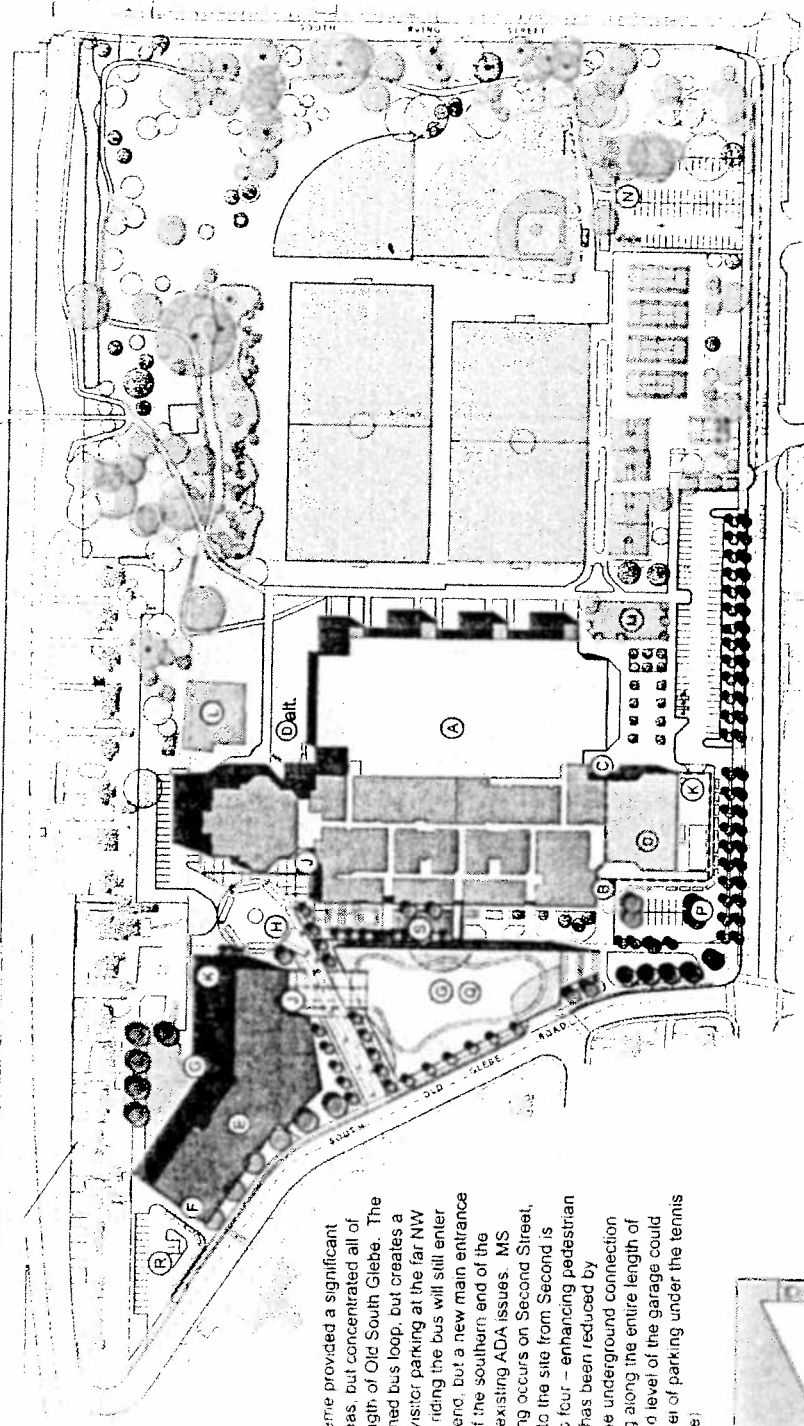
18 October, 2014 (original)

20 November, 2014 (update)

existing MS capacity: 982

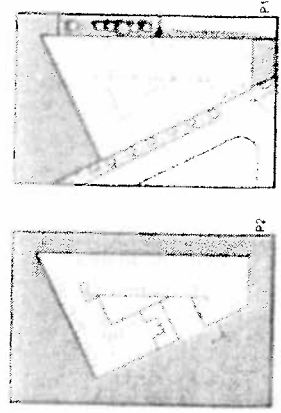
new ES capacity: 725

future expanded MS capacity: 1,300



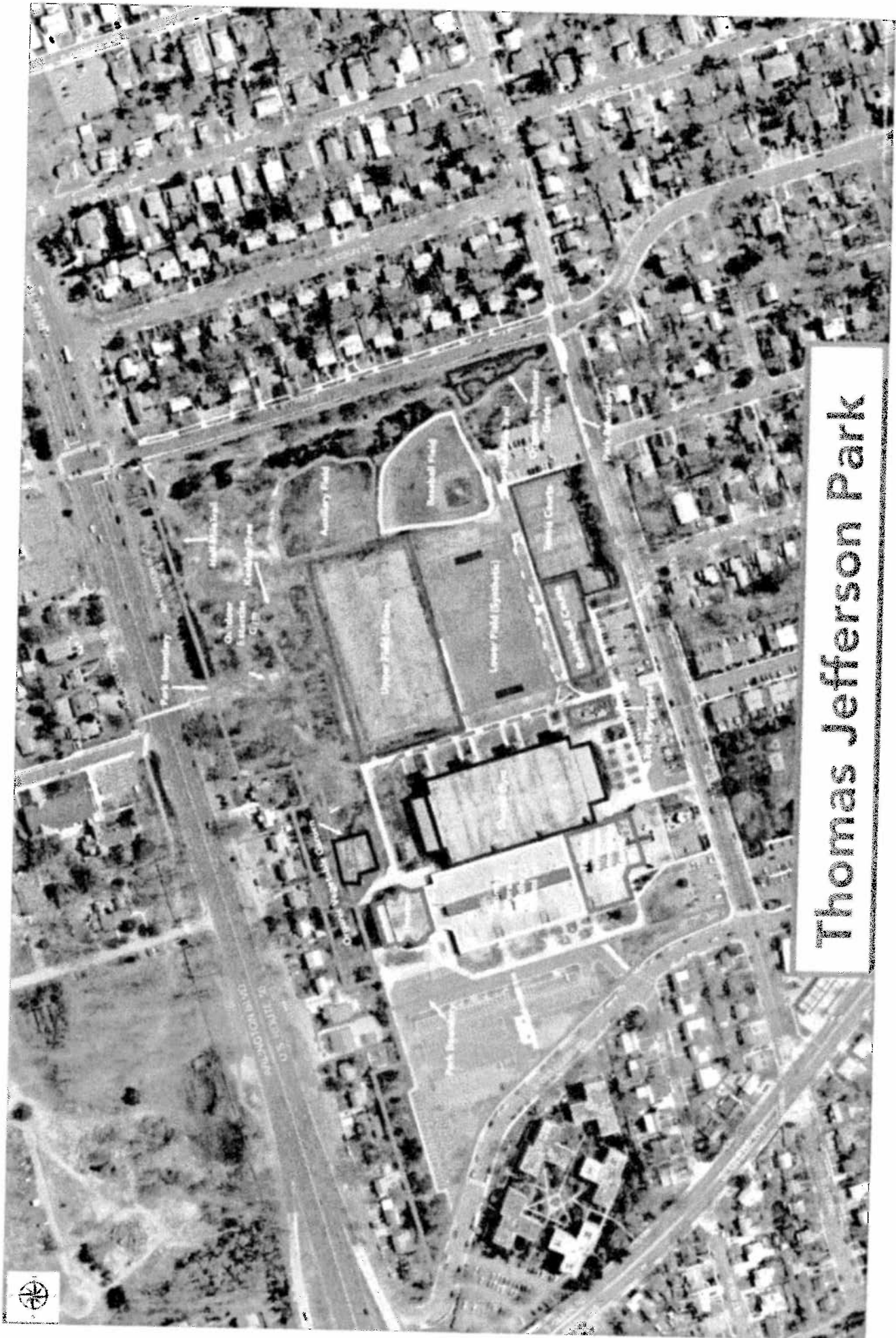
Proposed Site Plan

The original version of this scheme provided a significant net gain of play/recreational areas, but concentrated all of the traffic on just 50% of the length of Old South Glebe. The revised scheme keeps a combined bus loop, but creates a new ES parent drop-off loop & visitor parking at the far NW corner of the site. MS students riding the bus will still enter Thomas Jefferson on the north end, but a new main entrance is created on the ground level of the southern end of the building, providing a remedy to existing ADA issues. MS parent drop-off and visitor parking occurs on Second Street, and the number of driveways into the site from Second is reduced from seven (existing) to four – enhancing pedestrian safety. Structured parking cost has been reduced by eliminating drop-off lanes and the underground connection to the ES, and by not excavating along the entire length of the MS. (The cost of the second level of the garage could also be weighed against one level of parking under the tennis courts as shown in scheme three)



Proposed Parking Deck Plans

- A Existing TJ Middle School + Community Center
- B New Middle School Entrance
- C Community Center Entrance
- D Area of future MS expansion
- E New Elementary School
- F Elementary School Entrance
- G Dedicated ES play space
- H Combined ES/MS Bus Queue/Drop
- I Bus rider entry
- J Service Yard
- K Community Garden
- L Community Playground
- M Playfield drop-off
- N Dedicated MS drop-off, visitor parking
- O Parking beneath elevated field, opening on to pedestrian plaza
- P Dedicated ES drop-off, visitor parking
- Q Existing "pits" on west side of MS are joined to create a plaza with an at grade opening into the parking structure



Thomas Jefferson Park

Appendix B

Diamond Field Fund Proposal

UNCLASSIFIED

Field Fund Discussion Brief

(Response to Jane Rudolph's November 5, 2014 Letter)

UNCLASSIFIED

Field Fund Diamond Sports Working Group

- Current Members
 - John Foti (CRBR)
 - David Lansing (AGSA)
 - Adam Balutis (ALL)
 - Chris Butcher (ATB)
 - Bill Murray (SBR)

Current Status

- In May 2014, the Diamond Sports Groups were tasked with “identifying options for spending money collected in the Diamond Field Funds”.
- In September, the Diamond Sports Groups provided the “Bluemont Proposal” which recommended the following for Bluemont Park:
 - Add a fourth field to this complex
 - Install 4 synthetic turf infields
 - Infields would be 90x90 to accommodate all leagues and all levels of play
 - Re-grade and level all fields
 - Add batting cages

Current Status (cont.)

- On November 5, 2014 a response was provided by Jane Rudolph which recommended that we “reconsider our recommendations” and look at the following options:
 - Tuckahoe Park Enhancements in FY2015
 - Other diamond field enhancements
 - Apply field funds to the Bluemont Park Enhancements in 2017

Short Term Recommendations

- Based on the recommendations made in the November 5, 2014 response, all Diamond Related Sports Group are in agreement and in the short term, propose the following:
- Release of \$20-25k out of Diamond Field Funds for the addition of batting cages at the following fields:
 - Tuckahoe (POC: John Foti, ABR)
 - Westover (POC: John Foti, ABR)
 - Arlington Traditional School (ATS) (POC: David Lansing, AGSA) – Highland Park is an alternative location
 - Ft. Scott (POC: Adam Balutis, ALL)

Short Term Recommendations

(Cont.)

Due to the planned 2015 CIP for Tuckahoe, it is requested that the Diamond Sports groups be consulted to come up with “optimal locations” for the batting cages:

- **Tuckahoe:**
 - Tentative recommendation is for batting cage to be located on left field line (County will work with POC)
- **Westover:**
 - Tentative location of batting cage will be on space to the left of Left Field fence (County will work with POC)
- **ATS:**
 - Location of batting cage is TBD (County will work with POC)
- **Ft. Scott:**
 - Location of batting cage is TBD (County will work with POC)

Long Term Recommendations

- Since Bluemont is scheduled for 2017 CIP, long-term, Diamond Sports Groups recommend that synthetic turf infields be added to 2 Bluemont fields (at a minimum)
 - Continue to “collect” field funds throughout 2017
 - Funds raised will be used to “supplement” work already scheduled for Bluemont in 2017
 - Diamond Sports Groups ask to be involved in 2017 Bluemont CIP to provide input and make suggestions

Batting Cage URLs

- Included are some examples of batting cages. Prices are in a range (and do not include labor)
- There are many options available so a determination needs to be made on which ones make the most sense

- <http://www.ondecksports.com/Commercial-Batting-Cages>
- <http://www.trigonsports.com/Team-Sports-Products/ProCage-Frames>
- <http://jugssports.com/batting-cage-frames/>
- <http://www.battingnets.com/cgi-bin/category/free-standing-batting-cages>

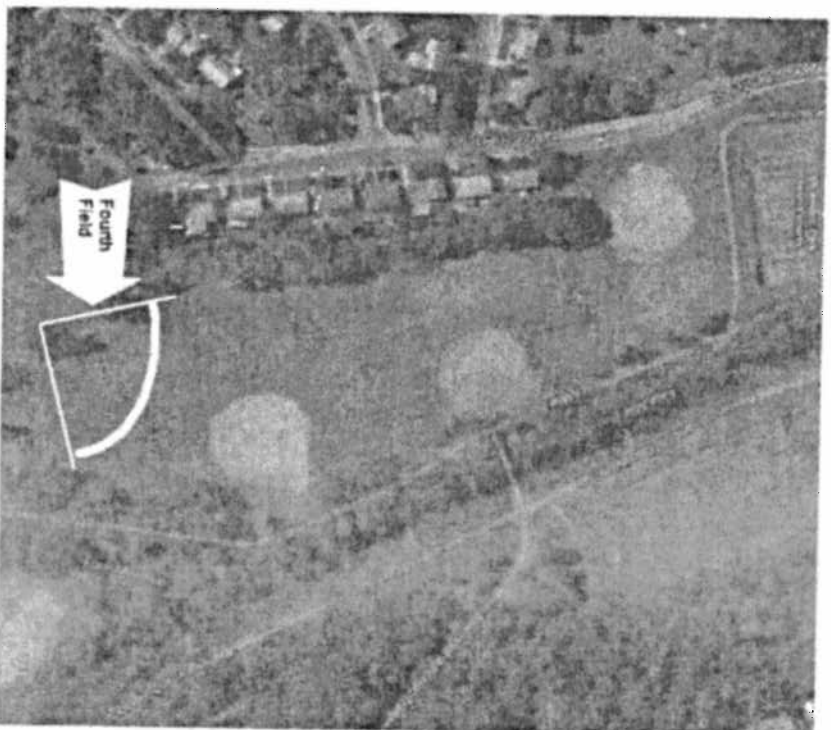
UNCLASSIFIED

Back Up Slides

UNCLASSIFIED

Long Term Bluemont Proposal

- Add fourth field to this complex
- Install 4 synthetic turf infields
- Infields would be 90x90 to accommodate all leagues and all levels of play
- Re-grade and level all fields
- Add batting cages



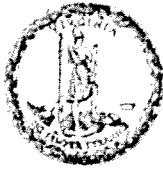
Benefits of Bluemont Proposal

- Numbers by Leagues:
 - **CRBR:** 84 games on Bluemont #2 and #3 (spring 2014)
 - Divisions: A, AA and AAA use these fields
 - Total kids in CRBR Divisions - A, AA and AAA: **753**
 - **ALL:** 48 games on Bluemont #2 and #3 (spring 2014)
 - Divisions: Rookies, Minors, AAA
 - Total kids in ALL Divisions - Rookies, Minors, AAA: **668**
- Numbers by Leagues:
 - **AGSA:** 96 games on Greenbrier #1, #2; Barcroft #3 and High View (spring 2014)
 - 94 games ATS (spring 2014)
 - Divisions: Pixie, Pigtail, Pony Tail, Diamond and Sage travel
 - Total kids in AGSA: **500+**
 - **ATB:** Multiple fields are used
 - Divisions: 8U, 9U and 10U
 - Total kids in ATB: **56**

This Bluemont Proposal will provide safe and reliable diamond fields for almost 2,000 Arlington County kids

Appendix C

Wilson School Letter



ARLINGTON COUNTY
PARK AND RECREATION COMMISSION
2100 Clarendon Boulevard, Suite 414
Arlington, Virginia 22201



December 15, 2014

Honorable Jay Fisetto, Chairman
Arlington County Board
2100 Clarendon Boulevard, Suite 300
Arlington, VA 22201

RE: The Future of Rosslyn Highlands Park

Dear Chairman Fisetto:

The Park and Recreation Commission has serious concerns about the potential loss of open space at Rosslyn Highlands Park.

The presentation provided to the Western Rosslyn Area Planning Study (WRAPS) Working Group on December 8 by the developer Penzance would eliminate the current park, and transfer the open space from public to private ownership. This alternative, the only alternative presented in detail by Penzance, would result in a park that would fail to meet the diverse recreation and open space needs of the Rosslyn community.

With increasing population in Rosslyn and the desire of families to live within the corridor, our current and future citizens desperately need recreation and open space amenities to maintain the County's high quality of life. There is currently insufficient space for field and court games in Rosslyn and the closest playground for young children is approximately ½ mile away. Rosslyn Highlands Park is used at all times, day and night, by the residents of Rosslyn.

It was clear from the 75 community members who attended the WRAPS workshop on November 8 that the Rosslyn community places the highest priority on open space. As the County staff detailed in their summary of the meeting, community members articulated a desire for:

- Additional open space, in the center of the study area;
- A street aligned at the eastern border of the study area, to allow for a larger, consolidated open space; and
- Increased heights, if open space can be gained.

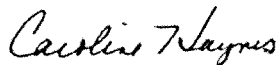
Beyond the need of neighborhood residents, the new school users will need open space and sports/recreation amenities at the site. With the likely relocation of the H-B Woodlawn program to the Wilson School site, the site should support the seven ultimate Frisbee teams that are an essential element of the program's culture and identity. The loss of Rosslyn Highlands Park would severely impact the ability to construct fields large enough to accommodate the Frisbee programs, forcing these seven teams to find alternate practice locations and compete for fields that are already fully programmed.

Clearly there is strong concern within the community about sacrificing existing open space for private development that would offset the cost of the new fire station. The Park and Recreation Commission shares these concerns. We also note that the initial County Board charge from July 16, 2013 indicated a minimum of 60,000 square feet for park, recreation and open space. This was changed in May 2014 to limit the open space to 60,000 square feet (including interior space). Given longstanding efforts to maximize recreation and open space in this heavily developed area, we object to setting a limit on what might be achieved through the planning process.

We encourage the County Board to consider the following steps: (1) revise the WRAPS charge to reflect the community's desire for maximizing open space on the site, and (2) explore alternatives for siting and financing the fire station, including using the County's bonding authority to fund the station and potentially looking beyond the planning area for a future fire station location. Our citizens have repeatedly and overwhelmingly voted in favor of bond issues to finance new facilities over the years and there should be strong support for public financing of a new fire station so that we don't have to lose this remaining parkland/open space in this heavily developed and underserved area.

We appreciate having the opportunity to share our views with you.

Sincerely,



Caroline Haynes, Chair
Park and Recreation Commission

cc: Members, Arlington County Board
Members, Arlington County School Board
Barbara Donnellan, County Manager
Jane Rudolph, Director, Department of Parks and Recreation
Members, Arlington County Planning Commission
Members, WRAPS Working Group