

Community Meeting – Transportation Around TJ New Elementary School

August 10, 2016



Department of Environmental Services
Division of Transportation and Development Services

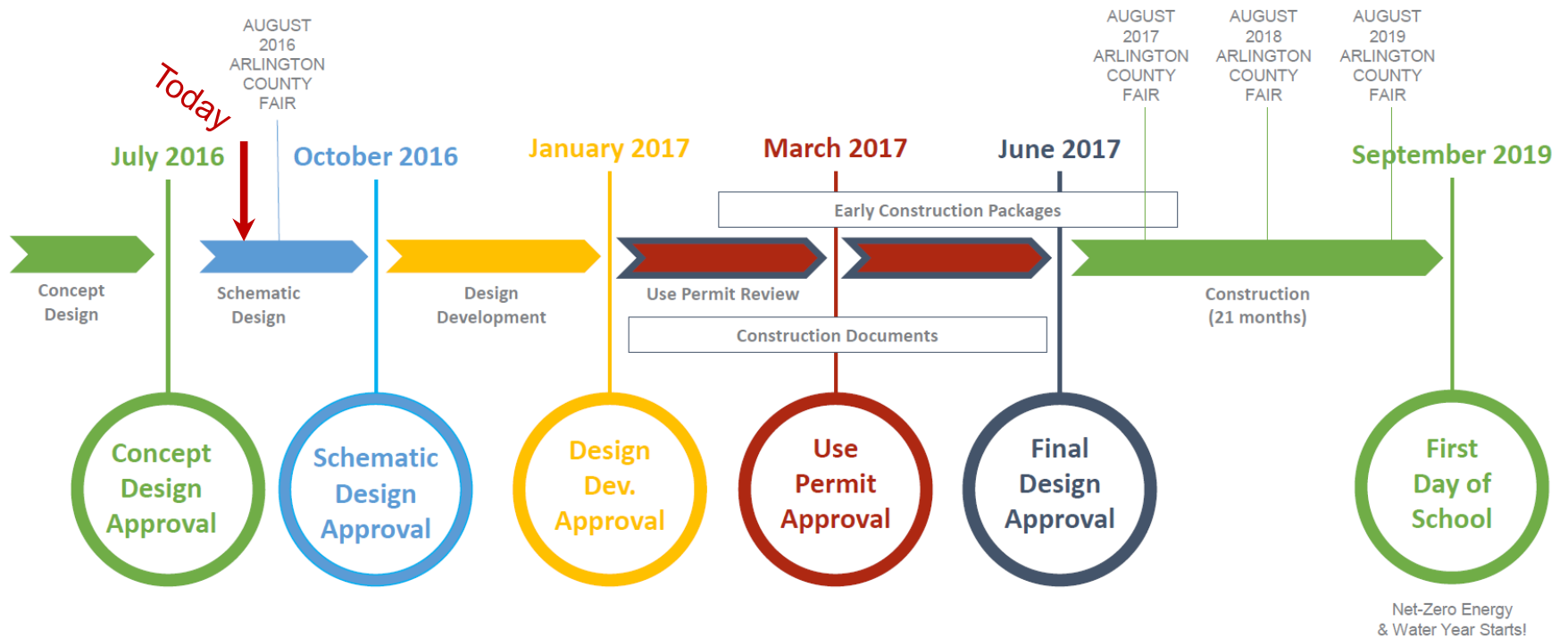
Community Meeting – Transportation Around TJ New Elementary School

- Meeting Agenda:
 - Welcome & Background -
Katie Cristol, County Board Member
 - TJ School Site Transportation Review Process -
Robert Gibson, Principal Planner
 - Broader Area Transportation Projects & Programs -
Dennis Leach, Arlington Director of Transportation
 - Q&A

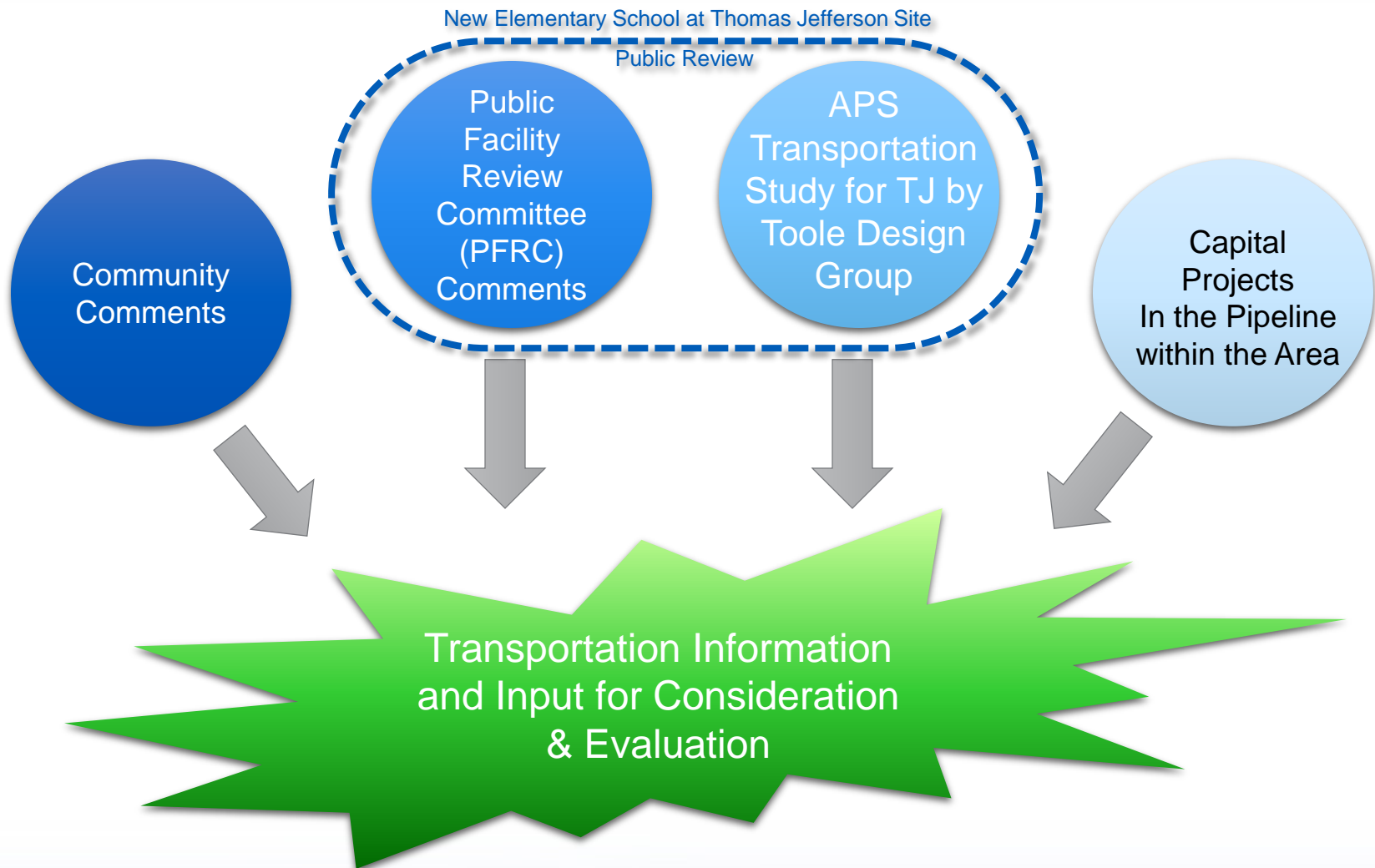
Project Timeline by APS

Exhibit A

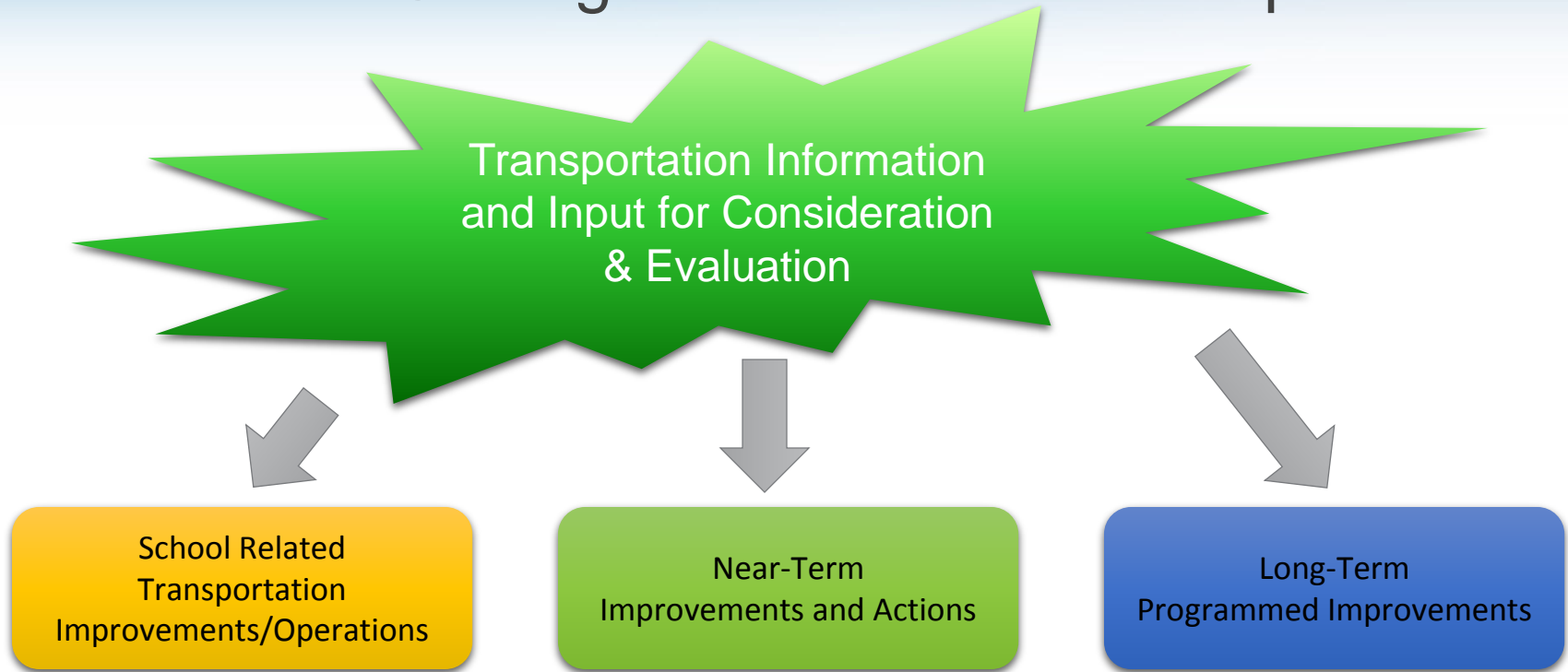
General Schedule | Timeline



Transportation Projects/Issues to be Considered As Part of Thomas Jefferson New Elementary School



Review and Sorting of Information and Input



Review and Sorting of Information and Input

School Related Transportation Improvements/Operations

- **School related infrastructure improvements.**
(Identified and required as part of use permit approval)
- **Development of school related transportation operational procedures.**
(Required prior to school opening)
 - Safe Routes to School Plans
 - Drop-off and Pick-up Operations
 - Bus Arrival and Dismissal Operations
- **Review of school related transportation operational procedures.**
(Required shortly after school opens)

Review and Sorting of Information and Input

Near-Term Improvements and Actions

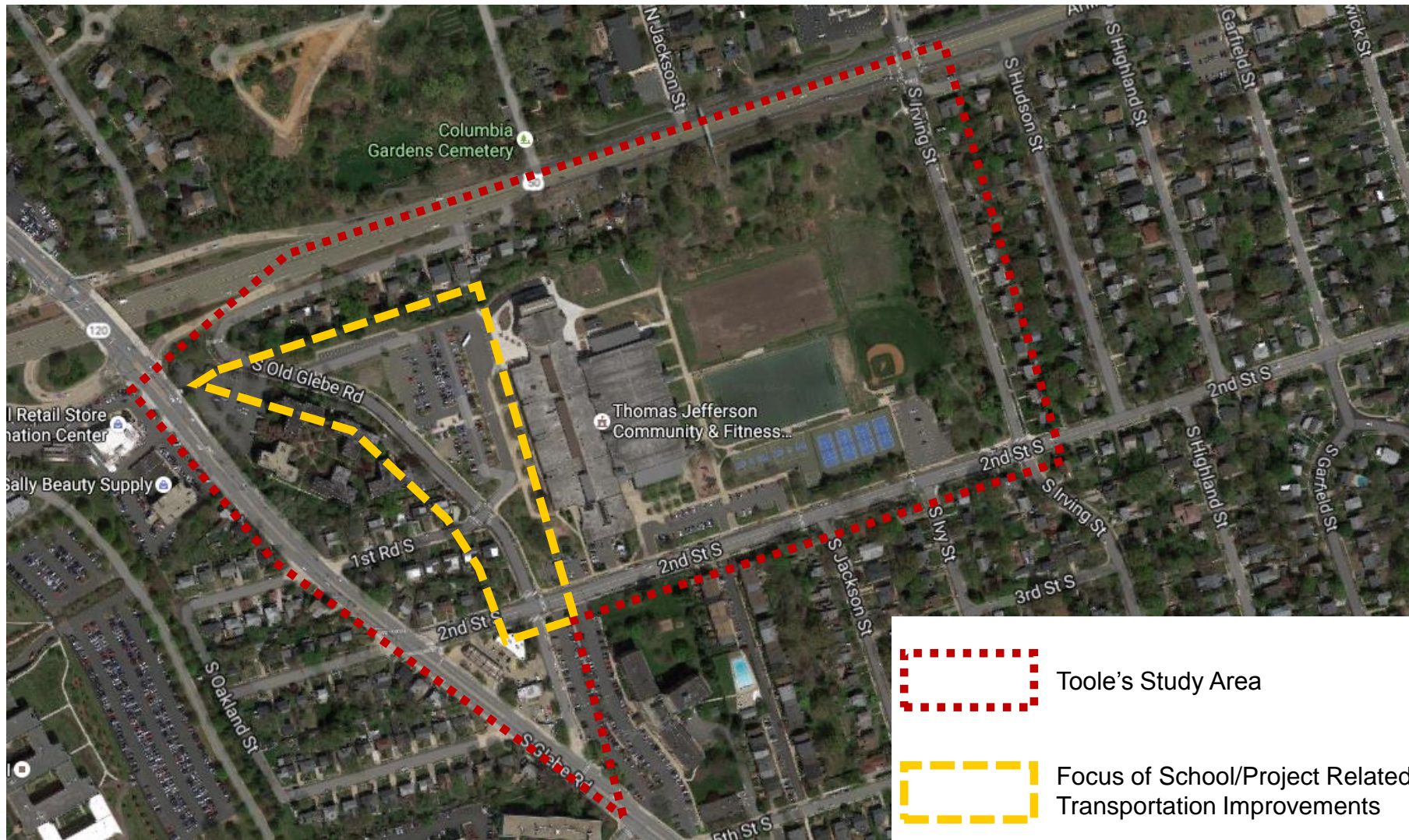
- County Operations and Maintenance
- Arlington Public Schools Operations Changes
- Arlington County Police Department (ACPD) Enforcement

Review and Sorting of Information and Input

Long-Term Programmed Improvements

- Neighborhood Conservation
- Neighborhood Complete Streets
- Safe Routes to Schools
- Arterial Streets Program

Toole Design Group's Transportation Analysis Study Area



Toole Design Group's Transportation Analysis Summary of Key Transportation Issues

- Congestion at 2nd Street South and South Old Glebe Road
- Vehicle Speed on 2nd Street South
- Reported wrong way driving and speed on 1st Road South
- Pedestrian/ADA and Bicycle Access to Site

Community Comment

- Arlington Heights Transportation Issues and Concerns - Winter 2016
- Transportation Around TJ New Elementary School Meeting Comments – August 2016

Capital Project Pipeline

- **5th Street South - Glebe Road to Jackson Street - Streetlight Project**
 - Install new street lights
 - Just recommended for funding by the NCAC in June of 2016
 - Will be approved by the Board in September of 2016
 - No timeline for construction
- **Arlington Boulevard Service Road from Fillmore to Irving Streets**
 - Pedestrian safety and trail improvements and realignment
 - Drainage improvements
 - New streetlights, curb, and gutter and sidewalk in select locations
 - In active design and expected construction is 2017, pending VDOT review
- **Arlington Boulevard & Irving Street Intersection Improvements**
 - Improve safety for all modes; connection to trail
 - traffic signal upgrade
 - Crosswalks, ADA ramps, sidewalk connections
 - New bus facilities
 - Remove utility poles
 - Design under review by VDOT prior to procurement
 - Expected construction spring 2017

Capital Project Pipeline (cont.)

- **South Fillmore Street from Arlington Boulevard to 5th Street South**
 - South Fillmore Street sidewalk widening
 - Relocation of utility poles
 - New pavement markings and signage
 - Under construction currently with completion fall 2016
- **South Walter Reed Drive from 5th to 9th Streets South**
 - Installing medians and landscaping in some medians
 - Adding curb extensions “nubs”, and ADA curb ramps
 - Bioretention facilities at 5th Street South and 9th Street South
 - New signal at Walter Reed Drive and 9th Street South
 - New striping and signage
 - In design at 60%, working on incorporating design comments including community comments

Recently Completed Projects in the Area

- **South Fenwick Street - Arlington Boulevard to 2nd Street South**
 - New Carlyle street lights along west side of street
 - New sidewalk, curb and gutter
 - New grass utility strip
 - New pavement markings and signage
- **South Garfield Street - Arlington Boulevard to 2nd Street South**
 - New Carlyle street lights along west side of street
 - New sidewalk, curb and gutter, on west side of street
 - New grass utility strip on west side of street
 - New curb and gutter on east side of street
 - New pavement markings and signage
 - Full depth repaving
- **South Irving Street - Arlington Boulevard to 2nd Street South**
 - New roadway, curb and gutter, widening the street for two travel lanes and parking on east side of street
 - Provision of existing trees, with some new street trees added
 - New crosswalk and gateway treatment added to north end of block

Recently Completed Projects in the Area (cont.)

- **South Highland Street, South Ivy Street and 9th Street South**
 - New Carlyle street lights along South Highland Street and South Ivy Street from 7th Street South and 9th Street South
 - New Carlyle street lights along 9th Street South from South Glebe Road to Walter Reed Drive
- **Arlington Boulevard/Glebe Road Bridge Reconstruction**
 - Bridge deck replacement
 - New northbound left-turn lane
 - New traffic signals
 - Improved sidewalks/shared-use paths 11 and 17 feet respectively
- **2nd Street South Bike Lanes**
 - Narrowed travel lanes adding striped on-street bike lanes
 - Installed curb extensions “nubs” and warning signs
 - Upgraded and replaced handicapped ramps
 - Improved crosswalks at South Jackson Street and South Ivy Street
 - Replaced some sidewalk segments with new concrete

Recent Operational Changes in the Area

- **1st Road South between South Glebe Road and South Old Glebe Road**
 - Installed new No U-Turn sign and One-Way sign (July 2016)
 - Enhanced signage on Old Glebe Road entrance (2013)
 - New speed limit sign (2012)
 - Speed study 2012 (85th percentile 24 mph and 19 mph average speed)
- **2nd Street South and Glebe Road Intersection**
 - Request to restripe crosswalk crossing west side of 2nd Street South
- **Reviewing South Old Glebe Road for Residential Permit Parking**

Programs to Consider for Long Term Improvements

- Neighborhood Conservation
- Neighborhood Complete Streets
- Safe Routes to Schools
- Arterial Streets Program
- Transportation Operations

Next Steps (Coordinated with PFRC Process)

- Summary of Inputs – October, 2016
- Identification of Transportation Related Projects to be Included in TJ Use Permit – January 2017
 - Designed as part of TJ Project
 - Included in Use Permit Review
- Final Determination of Non-School Short & Long-Term Projects – March 2017
 - Handoff to various partners

Questions?

RESOURCES FOR MORE INFORMATION:

- Website: PFRC's Thomas Jefferson (New Elementary School)
 - Visit www.arlingtonva.us; search “PFRC” or “TJ School”
- PFRC Members
- Arlington's Transportation Website
 - <https://transportation.arlingtonva.us/>
 - Report a Problem: 703-228-6570