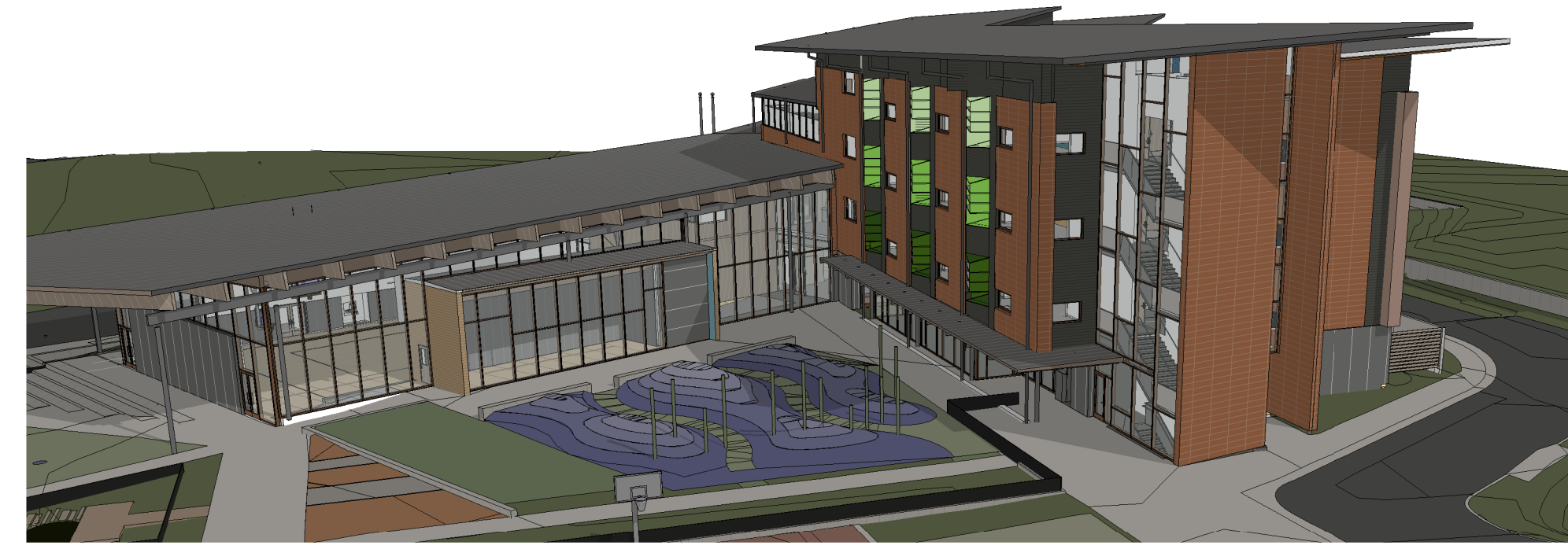




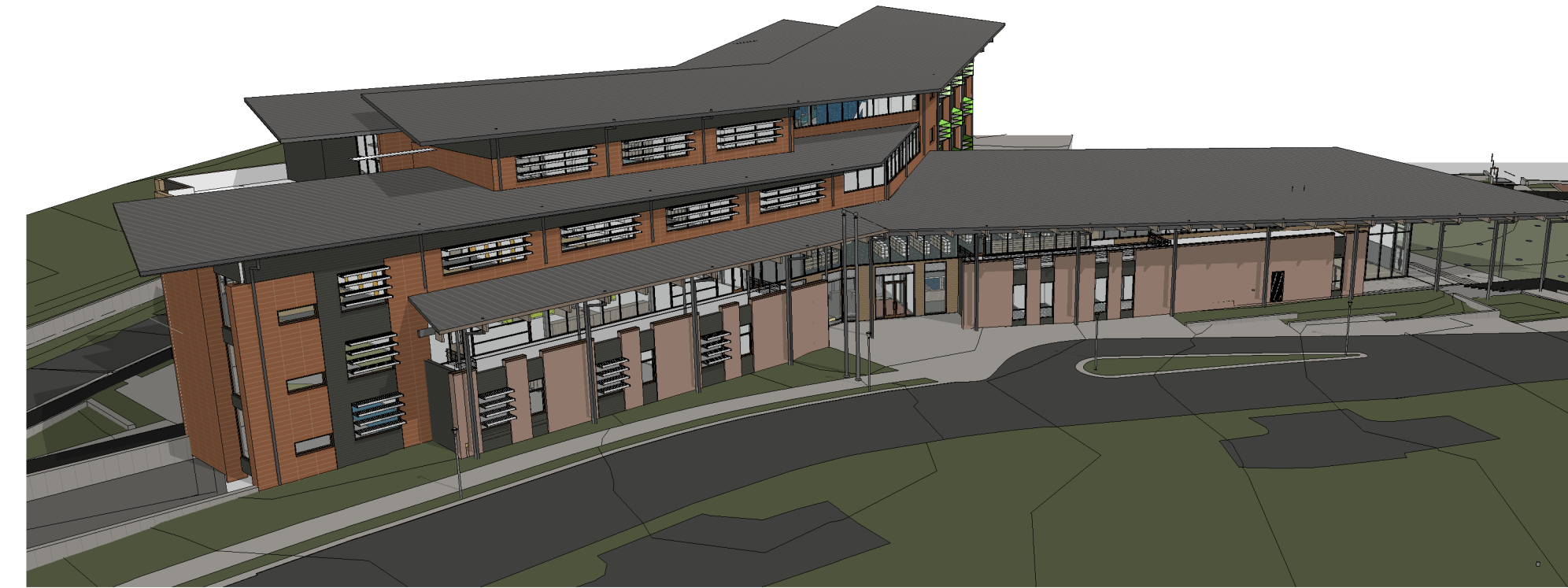
1 NORTH VIEW



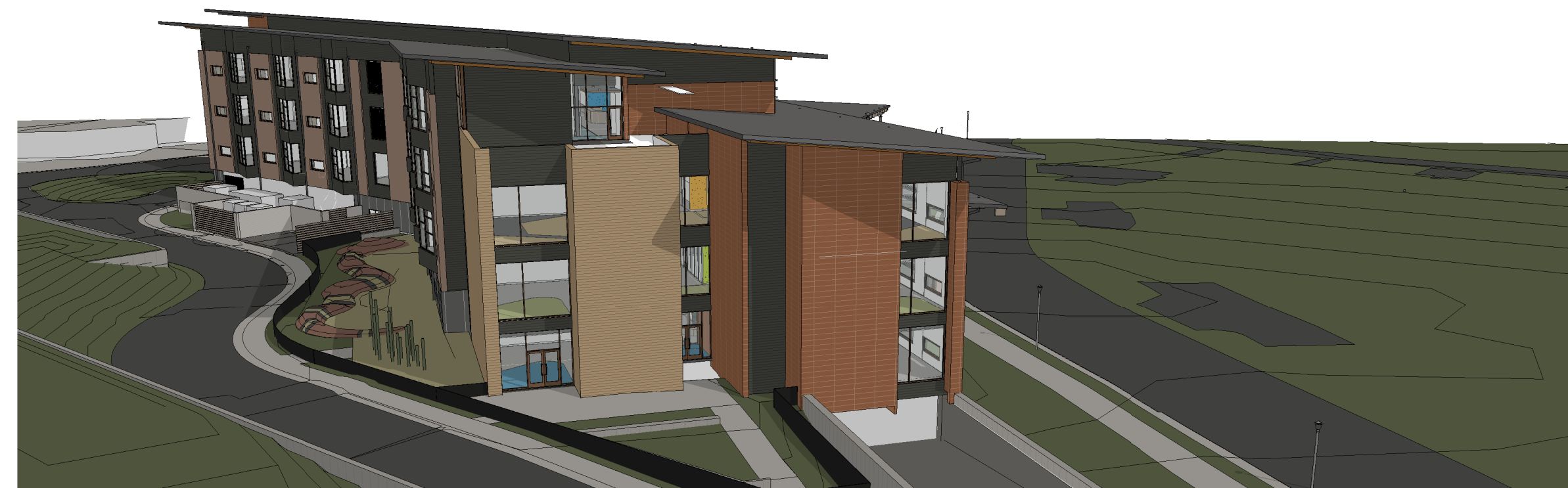
2 EAST VIEW



3 SOUTH VIEW



4 WEST VIEW



8 WEST VIEW Copy 1

VMDO

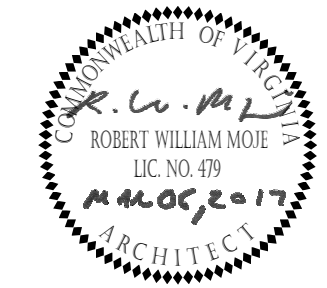
VMDO Architects
200 E Market Street
Charlottesville, VA 22902
434.296.5684
vmdo.com



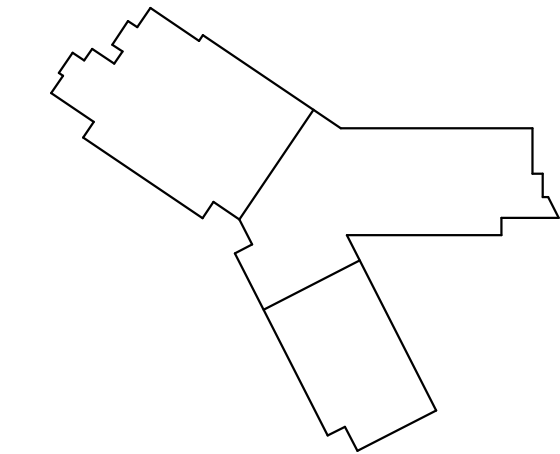
ARLINGTON PUBLIC SCHOOLS
NEW ELEMENTARY SCHOOL #2
AT THE SITE OF THOMAS JEFFERSON MIDDLE SCHOOL

125 South Old Glebe Rd
Arlington, VA 22204

Client Project Number 60FY16
VMDO Project Number 1152



Checked By PMD
Drawn By DEM



**DRAWING NOT FOR
CONSTRUCTION**

ISSUES AND REVISIONS	
NO.	DATE
1	11.30.2016
2	03.06.2017

EXTERIOR
AXONOMETRIC VIEWS

A300

\Users\dem\My Documents\1152\1152.dwg 11/30/2016 11:30:20 AM
 11/30/2016 11:30:20 AM

11/30/2016 11:30:20 AM

VMDO

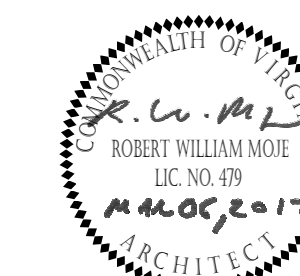
VMDO Architects
200 E Market Street
Charlottesville, VA 22902
434.296.5684
vmdo.com



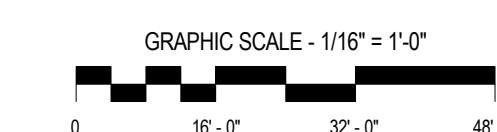
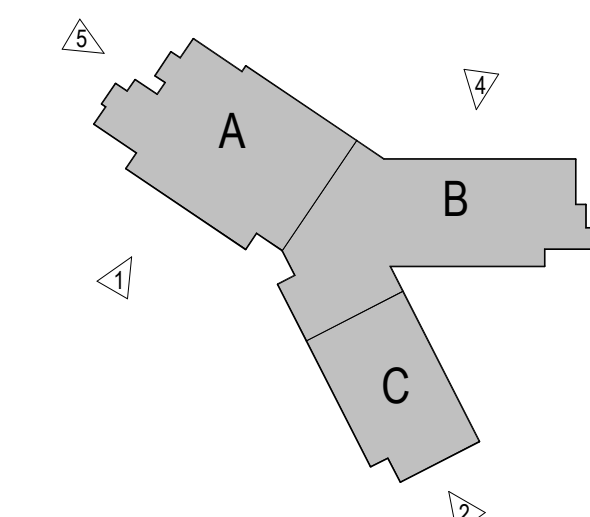
ARLINGTON PUBLIC SCHOOLS
NEW ELEMENTARY SCHOOL #2
AT THE SITE OF THOMAS JEFFERSON MIDDLE SCHOOL

125 South Old Glebe Rd
Arlington, VA 22204

Client Project Number 60FY16
VMDO Project Number 1152

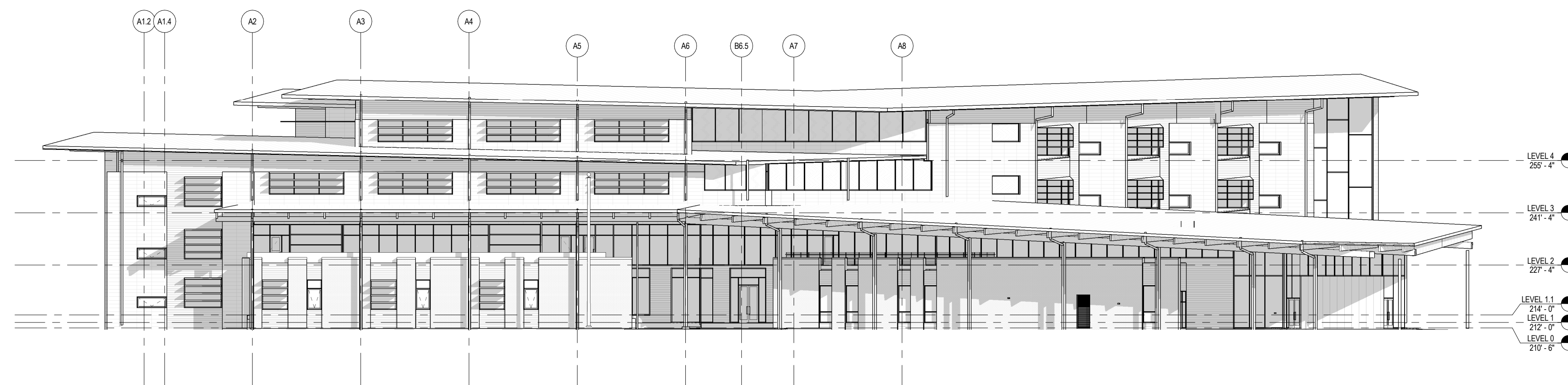


Checked By PMD
Drawn By DEM



DRAWING NOT FOR CONSTRUCTION

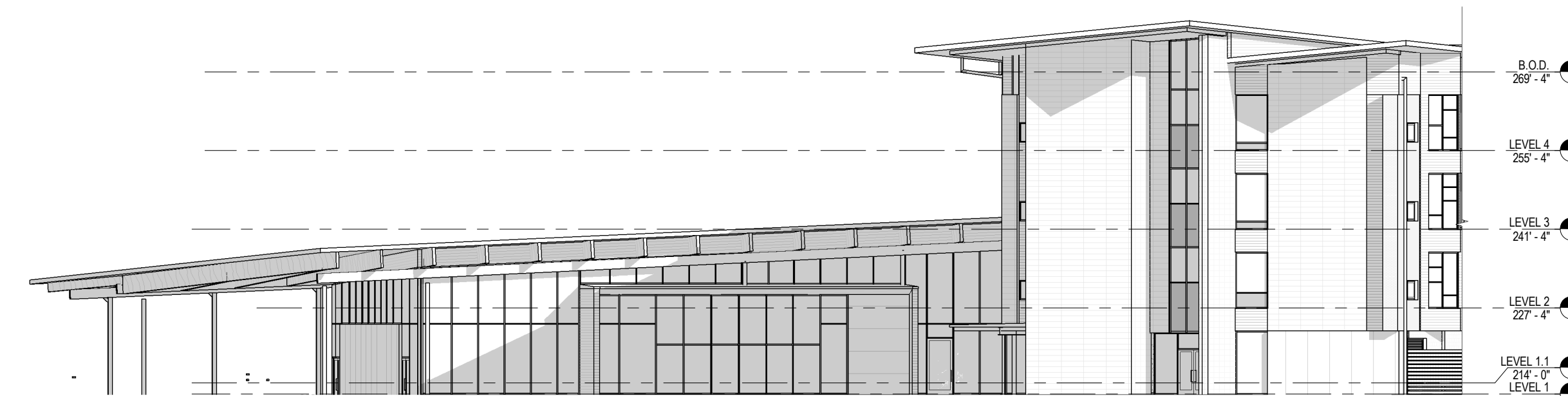
ISSUES AND REVISIONS	
NO.	DATE
1. SUBMITTAL	11.30.2016
2. USE PERMIT SUBMISSION	03.06.2017
3. USE PERMIT RESUBMISSION	



1 OVERALL - SOUTHWEST ELEVATION
A110/A301 1/16" = 1'-0"



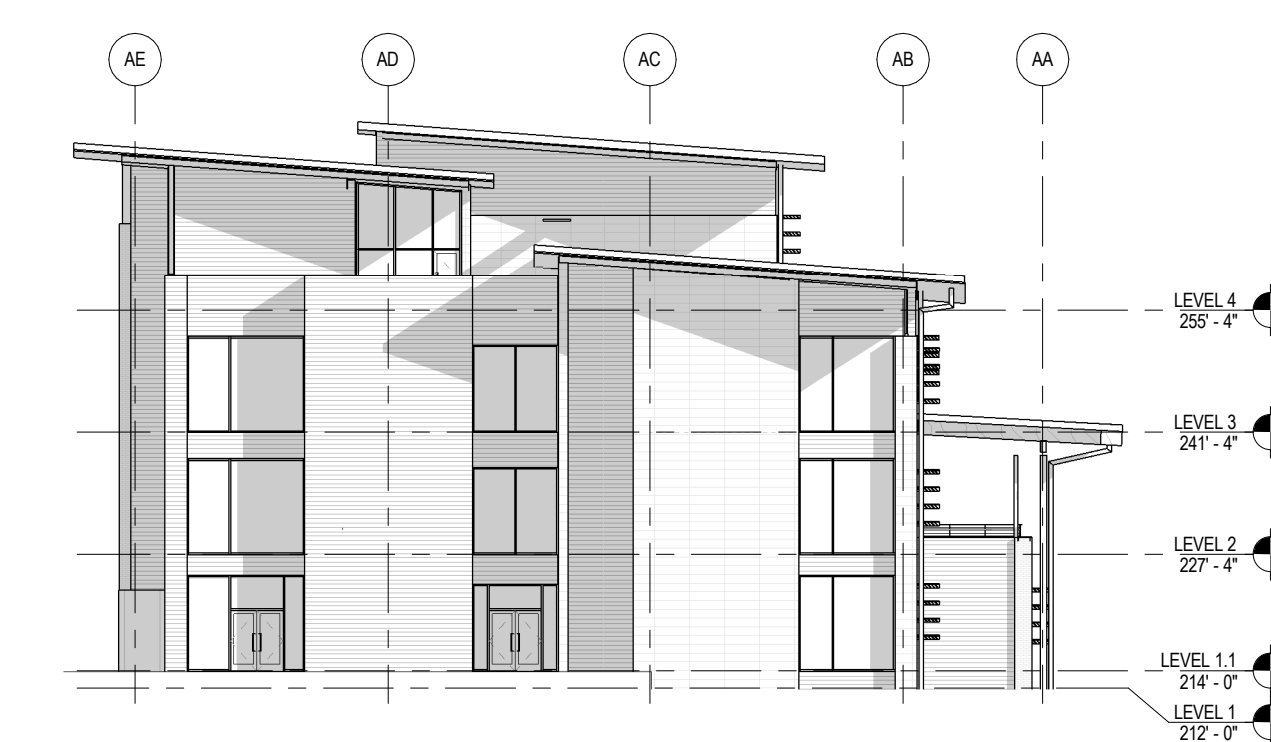
2 OVERALL - SOUTH ELEVATION
A110/A301 1/16" = 1'-0"



3 OVERALL - EAST ELEVATION
A110/A301 1/16" = 1'-0"



4 OVERALL - NORTH ELEVATION
A110/A301 1/16" = 1'-0"



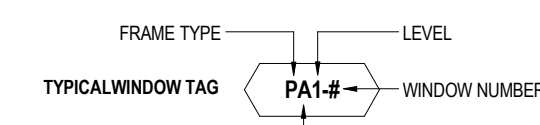
5 OVERALL - WEST ELEVATION
A110/A301 1/16" = 1'-0"

ELEVATION / BUILDING SECTION GENERAL NOTES

- ON SYMMETRICAL DRAWINGS, ALL NOTES AND DIMENSIONS SHOWN ON ONE-HALF OF DRAWING SHALL APPLY TO BOTH HALVES OF DRAWINGS.
- PROVIDE HIGH PERFORMANCE COATINGS AT ALL EXTERIOR FERROUS METALS (STRUCTURAL AND DECORATIVE).
- INTERIOR VIEWS IN BUILDING SECTIONS ARE TYPICALLY SIMPLIFIED FOR CLARITY; REFER TO LARGER SCALED INTERIOR ELEVATIONS FOR ADDITIONAL INFORMATION.
- FOOTINGS AND FOUNDATIONS ARE SHOWN FOR ILLUSTRATION ONLY. REFER TO STRUCTURAL DRAWINGS FOR EXTENT OF WORK.
- ALL DOWNSPOTS ARE TO BE TYPICAL, U.N.O.
- REFERENCE MEP & CIVIL DRAWINGS FOR FULL SCOPE OF M.E.P. AND CIVIL WORK.
- EXTERIOR SUNSHADES ARE DISPLAYED W/ DASHED LINES @ WINDOWS.
- WOOD BOARD BLOCCING TO INFL. OVER BEAMS AT GYM TO BE WESTERN RED CEDAR, ALTERNATE DOUGLAS FIR.

STOREFRONT & CURTAINWALL GENERAL NOTES

- VERIFY ALL DIMENSIONS IN FIELD PRIOR TO FABRICATION.
- SEE SPECIFICATIONS FOR GLASS TYPES.
- DIMS SHOWN ARE NOMINAL AND/OR ROUGH OPENINGS. CONTRACTOR TO ACCOUNT FOR JOINTS, SHIMS, SEALANT, ETC.
- CONTRACTOR RESPONSIBLE TO COORDINATE ALL ALUMINUM FRAMES WITH ALL RELEVANT DETAILS DEPICTED THROUGHOUT DRAWINGS.
- COORDINATE ALL ALUMINUM FRAMES WITH SPECIFICATION REQUIREMENTS, INCLUDING BUT NOT LIMITED TO PROVIDING ENGINEERING TO VERIFY WIND LOADING CRITERIA IS MET IN ALL CASES. SEE STRUCTURAL DRAWINGS.
- ALUMINUM FRAME DRAWINGS REPRESENT DESIGN INTENT. SHOP DRAWINGS ARE REQUIRED PRIOR TO FABRICATION.
- NO FRAMES SHALL BE DELIVERED OR INSTALLED PRIOR TO APPROVED SUBMITTALS WHICH INCLUDE ENGINEERING DATA AND SHOP DRAWINGS BASED ON MEASUREMENTS VERIFIED IN FIELD.
- SOME FRAME TYPES ARE REPEATED AS SIMILAR OR OPPOSITE HAND. SEE ELEVATIONS FOR QUANTITIES, LOCATIONS, AND INSTALLATION.
- COORDINATE ALL HARDWARE WITH DOOR SCHEDULE AND SPECIFICATIONS.
- SEE DOOR SCHEDULE FOR TYPICAL DOOR TYPES, WHICH INCLUDE ALUMINUM DOORS INSTALLED IN ALUMINUM FRAMES.
- SEE DOOR SCHEDULE FOR TYPES AND DETAILS OF DOORS IN ALUMINUM STOREFRONT FRAMES.
- FRAME TYPES, AS DEPICTED, REFLECT THE EXTERIOR CONDITION OF THE FRAME.
- PROVIDE MANUALLY OPERATED ROLLER SHADES AT LOCATIONS INDICATED. SHADES COVER FULL HEIGHT OF GLAZING, U.N.O.
- U.N.O. FILL SHIM SPACE AT SFC'W & R.O. WITH L.D.F.
- ALIGN JOINTS IN SHADE FABRIC WITH MAJOR VERTICAL MULLIONS, TYP.
- ROLLER SHADES SHALL COVER OPERABLE SASH WITHOUT INTERRUPTION. PROVIDE INDIVIDUAL DOOR-MOUNTED ROLLER SHADES AT DOOR GLAZING.
- ROLLER SHADES NOT REQUIRED BEHIND SPANDREL GLASS OR AT INSULATED METAL PANELS U.N.O.



FRAME TYPE	LEVEL	WINDOW NUMBER
PA1-B		

WINDOW FRAME TYPES	SPEC#	BOD
P	XX-XXXX	INTUS
S	XX-XXXX	KAWNEER TRIFAB 451 UT
C	XX-XXXX	KAWNEER 1600 UT

GLAZING TYPES	DESCRIPTION
IGL-1	CLEAR VISION, EXTERIOR INSULATED, REF SPEC.
IGL-2	CLEAR VISION, EXTERIOR INSULATED & LAMINATED, REF SPEC.
IGL-3	SPANDREL EXTERIOR INSULATED, REF SPEC.
IGL-4	FRITTED, EXTERIOR INSULATED, REF SPEC.
IGL-5	CLEAR, INTERIOR INSULATED & LAMINATED, REF SPEC.
IGL-6	CLEAR, PSE FRATED & LAMINATED, REF SPEC.
IGL-7	FROSTED, EXTERIOR INSULATED & LAMINATED, REF SPEC.
GLA-1	CLEAR, INTERIOR LAMINATED, REF SPEC.
GL-2	CLEAR, INTERIOR MONOLITHIC, REF SPEC.

- GLAZING NOTES**
- ALL GLAZING ON THE PROJECT IS TO BE TEMPERED.
 - ALL SPANDREL GLAZING SHOWN IS SHADED.
 - ALL EXTERIOR GLAZING IS GL-1, U.N.O.
 - ALL INTERIOR GLAZING IS GL-1, U.N.O.

FINISH KEY

	MODULAR BRICK FINISH, REF WALL TYPES
	FIBER CEMENT FINISH, REF WALL TYPES
	TERRACOTTA FINISH, REF WALL TYPES
	GROUNDFACE CMU
	4" WIDE SLATE PANELS, REF WALL TYPES

OVERALL EXTERIOR ELEVATIONS

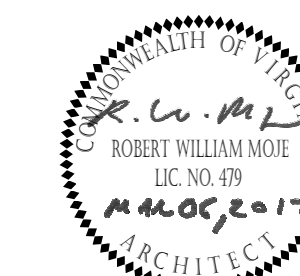
A301



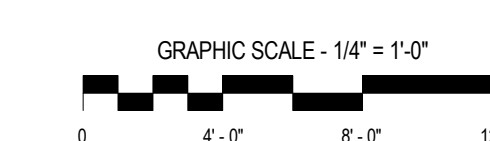
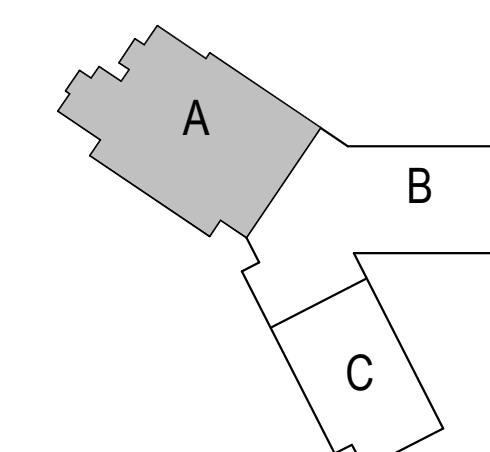
ARLINGTON PUBLIC SCHOOLS
NEW ELEMENTARY SCHOOL #2
AT THE SITE OF THOMAS JEFFERSON MIDDLE SCHOOL

125 South Old Clebe Rd
Arlington, VA 22204

Client Project Number 60FY16
VMDO Project Number 1152



Checked By PMD
Drawn By DEM

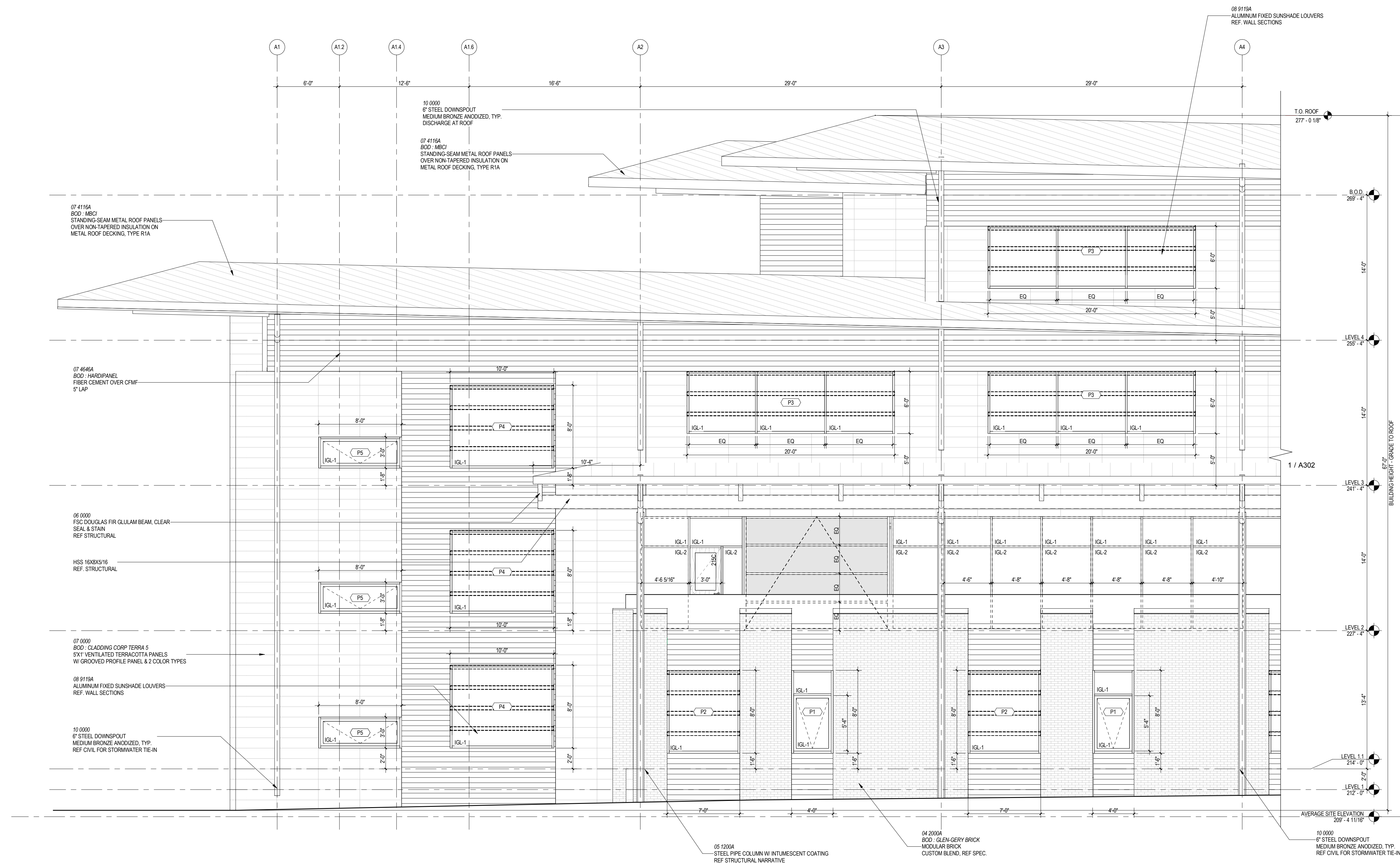


DRAWING NOT FOR
CONSTRUCTION

ISSUES AND REVISIONS
NO. SUBMITTAL DATE

ENLARGED BUILDING
ELEVATIONS - AREA A

A303



1 BUILDING ELEVATION - AREA A, SOUTH
A111/A303 1/4" = 1'-0"

- ELEVATION / BUILDING SECTION GENERAL NOTES**
- ON SYMMETRICAL DRAWINGS, ALL NOTES AND DIMENSIONS SHOWN ON ONE-HALF OF DRAWING SHALL APPLY TO BOTH HALVES OF DRAWINGS.
 - PROVIDE HIGH PERFORMANCE COATINGS AT ALL EXTERIOR FERROUS METALS (STRUCTURAL AND DECORATIVE).
 - INTERIOR VIEWS IN BUILDING SECTIONS ARE TYPICALLY SIMPLIFIED FOR CLARITY. REFER TO LARGER SCALED INTERIOR ELEVATIONS FOR ADDITIONAL INFORMATION.
 - FOOTINGS AND FOUNDATIONS ARE SHOWN FOR ILLUSTRATION ONLY. REFER TO STRUCTURAL DRAWINGS FOR EXTENT OF WORK.
 - ALL DOWNSPOUTS ARE TO BE 6" TYPICAL, U.N.O.
 - REFERENCE MEP & CIVIL DRAWINGS FOR FULL SCOPE OF M.E.P. AND CIVIL WORK.
 - EXTERIOR SUNSHADES ARE DISPLAYED WI DASHED LINES @ WINDOWS.
 - WOOD BOARD BLOCKING TO INFL OVER BEAMS AT GYM TO BE WESTERN RED CEDAR, ALTERNATE DOUGLAS FIR.

- STOREFRONT & CURTAINWALL GENERAL NOTES**
- VERIFY ALL DIMENSIONS IN FIELD PRIOR TO FABRICATION.
 - SEE SPECIFICATIONS FOR GLASS TYPES.
 - DIMS SHOWN ARE NOMINAL AND/OR ROUGH OPENINGS. CONTRACTOR TO ACCOUNT FOR JOINTS, SHIMS, SEALANT, ETC.
 - CONTRACTOR RESPONSIBLE TO COORDINATE ALL ALUMINUM FRAMES WITH ALL RELEVANT DETAILS DEPICTED THROUGHOUT DRAWINGS.
 - COORDINATE ALL ALUMINUM FRAMES WITH SPECIFICATION REQUIREMENTS, INCLUDING BUT NOT LIMITED TO PROVIDING ENGINEERING TO VERIFY WIND LOADING CRITERIA IS MET IN ALL CASES. SEE STRUCTURAL DRAWINGS.
 - ALUMINUM FRAME DRAWINGS REPRESENT DESIGN INTENT. SHOP DRAWINGS ARE REQUIRED PRIOR TO FABRICATION.
 - NO FRAMES SHALL BE DELIVERED OR INSTALLED PRIOR TO APPROVED SUBMITTALS WHICH INCLUDE ENGINEERING DATA AND SHOP DRAWINGS BASED ON MEASUREMENTS VERIFIED IN FIELD.
 - SOME FRAME TYPES ARE REPEATED AS SIMILAR OR OPPOSITE HAND. SEE ELEVATIONS FOR QUANTITIES, LOCATIONS, AND INSTALLATION.
 - COORDINATE ALL HARDWARE WITH DOOR SCHEDULE AND SPECIFICATIONS.
 - SEE DOOR SCHEDULE FOR TYPICAL DOOR TYPES, WHICH INCLUDE ALUMINUM DOORS INSTALLED IN ALUMINUM FRAMES.
 - SEE DOOR SCHEDULE FOR TYPES AND DETAILS OF DOORS IN ALUMINUM STOREFRONT FRAMES.
 - FRAME TYPES, AS DEPICTED, REFLECT THE EXTERIOR CONDITION OF THE FRAME.
 - PROVIDE MANUALLY OPERATED ROLLER SHADES AT LOCATIONS INDICATED. SHADES COVER FULL HEIGHT OF GLAZING, U.N.O.
 - U.N.O. FULL SHIM SPACE AT SFCW & R.O. WITH L.D.F.
 - ALUM JOINTS IN SHADE FABRIC WITH MAJOR VERTICAL MALLIONS, TYP.
 - ROLLER SHADES SHALL COVER OPERABLE SASH WITHOUT INTERRUPTION. PROVIDE INDIVIDUAL DOOR-MOUNTED ROLLER SHADES AT DOOR GLAZING.
 - ROLLER SHADES NOT REQUIRED BEHIND SPANDREL GLASS OR AT INSULATED METAL PANELS U.N.O.

FRAME TYPE

TYPICAL WINDOW TAG: PA1-# - WINDOW NUMBER

LEVEL: BUILDING AREA

WINDOW FRAME TYPES	SPEC#	BOD
P	XX-XXXX	INTUS
S	XX-XXXX	KAWNEER, TRIFAB 451 UT
C	XX-XXXX	KAWNEER, 1600 UT

GLAZING TYPES

IGL-1	CLEAR VISION, EXTERIOR INSULATED, REF SPEC.
IGL-2	CLEAR VISION, EXTERIOR INSULATED & LAMINATED, REF SPEC.
IGL-3	SPANDREL, EXTERIOR INSULATED, REF SPEC.
IGL-4	FRITTED, EXTERIOR INSULATED, REF SPEC.
IGL-5	CLEAR, INTERIOR INSULATED & LAMINATED, REF SPEC.
IGL-6	CLEAR, FINE-FRATED & LAMINATED, REF SPEC.
IGL-7	FROSTED, EXTERIOR INSULATED & LAMINATED, REF SPEC.
GL-1	CLEAR, INTERIOR LAMINATED, REF SPEC.
GL-2	CLEAR, INTERIOR MONOLITHIC, REF SPEC.

GLAZING NOTES

- ALL GLAZING ON THE PROJECT IS TO BE TEMPERED.
- ALL SPANDREL GLAZING SHOWN IS SHADED.
- ALL EXTERIOR GLAZING IS IGL-1, U.N.O.
- ALL INTERIOR GLAZING IS GL-1, U.N.O.

FINISH KEY

[Pattern]	MODULAR BRICK FINISH, REF WALL TYPES	[Pattern]	4" WIDE SLATE PANELS, REF WALL TYPES
[Pattern]	FIBER CEMENT FINISH, REF WALL TYPES		
[Pattern]	TERRACOTTA FINISH, REF WALL TYPES		
[Pattern]	GROUNDFACE CMU		

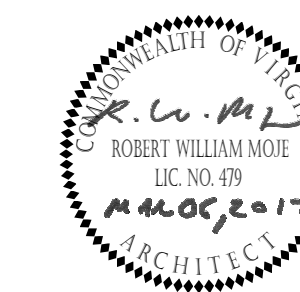
A:\Projects\1152\1152-A303\1152-A303.dwg
 08/11/2016 10:00 AM
 R:\Users\dem\OneDrive\Documents\1152-A303.dwg
 08/11/2016 10:00 AM
 R:\Users\dem\OneDrive\Documents\1152-A303.dwg
 08/11/2016 10:00 AM



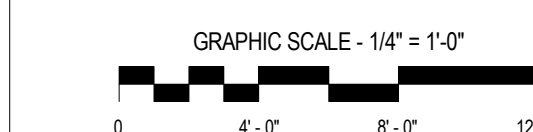
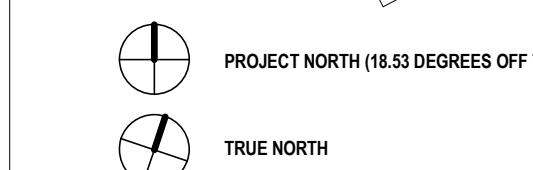
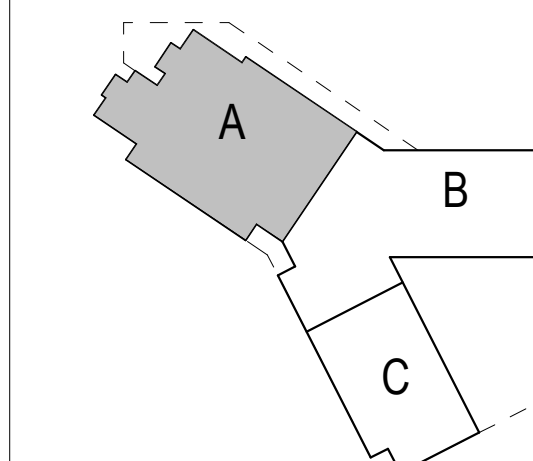
ARLINGTON PUBLIC SCHOOLS
NEW ELEMENTARY SCHOOL #2
AT THE SITE OF THOMAS JEFFERSON MIDDLE SCHOOL

125 South Old Clebe Rd
Arlington, VA 22204

Client Project Number 60FY16
VMDO Project Number 1152

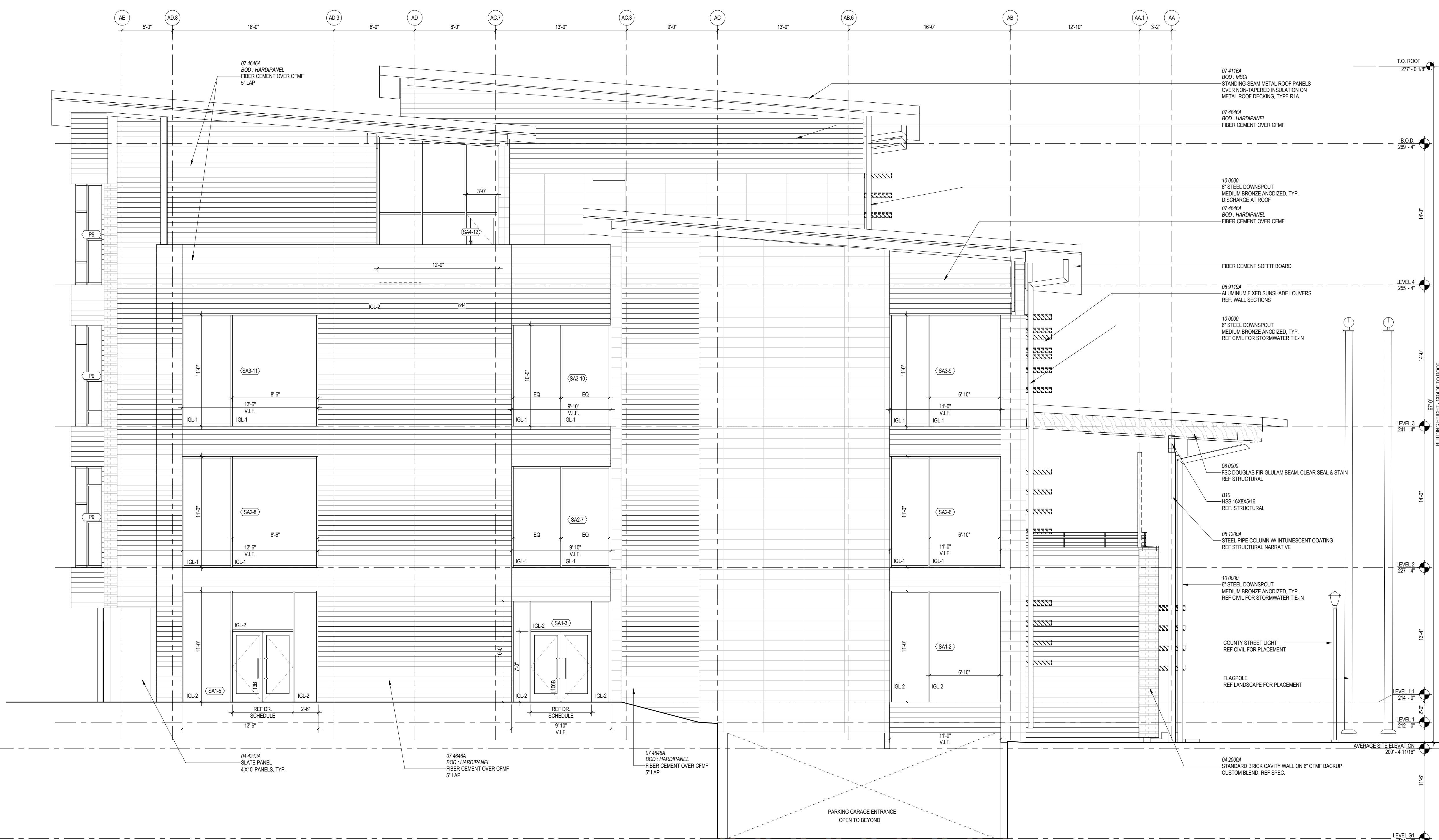


Checked By PMD
Drawn By DEM



DRAWING NOT FOR CONSTRUCTION

ISSUES AND REVISIONS
NO. SUBMITTAL DATE



1 BUILDING ELEVATION - AREA A, WEST
1/4" = 1'-0"

- ELEVATION / BUILDING SECTION GENERAL NOTES**
- ON SYMMETRICAL DRAWINGS, ALL NOTES AND DIMENSIONS SHOWN ON ONE-HALF OF DRAWING SHALL APPLY TO BOTH HALVES OF DRAWINGS.
 - PROVIDE HIGH PERFORMANCE COATINGS AT ALL EXTERIOR FERROUS METALS (STRUCTURAL AND DECORATIVE).
 - INTERIOR VIEWS IN BUILDING SECTIONS ARE TYPICALLY SIMPLIFIED FOR CLARITY. REFER TO LARGER SCALED INTERIOR ELEVATIONS FOR ADDITIONAL INFORMATION.
 - FOOTINGS AND FOUNDATIONS ARE SHOWN FOR ILLUSTRATION ONLY. REFER TO STRUCTURAL DRAWINGS FOR EXTENT OF WORK.
 - ALL DOWNSPOUTS ARE TO BE 6" TYPICAL, U.N.O.
 - REFERENCE MEP & CIVIL DRAWINGS FOR FULL SCOPE OF M.E.P. AND CIVIL WORK.
 - EXTERIOR SUNSHADES ARE DISPLAYED W/ DASHED LINES @ WINDOWS.
 - WOOD BOARD BLOCKING TO INFL. OVER BEAMS AT GYM TO BE WESTERN RED CEDAR. ALTERNATE DOUGLAS FIR.

- STOREFRONT & CURTAINWALL GENERAL NOTES**
- VERIFY ALL DIMENSIONS IN FIELD PRIOR TO FABRICATION.
 - SEE SPECIFICATIONS FOR GLASS TYPES.
 - DIMS SHOWN ARE NOMINAL AND/OR ROUGH OPENINGS. CONTRACTOR TO ACCOUNT FOR JOINTS, SHIMS, SEALANT, ETC.
 - CONTRACTOR RESPONSIBLE TO COORDINATE ALL ALUMINUM FRAMES WITH ALL RELEVANT DETAILS DEPICTED THROUGHOUT DRAWINGS.
 - COORDINATE ALL ALUMINUM FRAMES WITH SPECIFICATION REQUIREMENTS, INCLUDING BUT NOT LIMITED TO PROVIDING ENGINEERING TO VERIFY WIND LOADING CRITERIA IS MET IN ALL CASES. SEE STRUCTURAL DRAWINGS.
 - ALUMINUM FRAME DRAWINGS REPRESENT DESIGN INTENT. SHOP DRAWINGS ARE REQUIRED PRIOR TO FABRICATION.
 - NO FRAMES SHALL BE DELIVERED OR INSTALLED PRIOR TO APPROVED SUBMITTALS WHICH INCLUDE ENGINEERING DATA AND SHOP DRAWINGS BASED ON MEASUREMENTS VERIFIED IN FIELD.
 - SOME FRAME TYPES ARE REPEATED AS SIMILAR OR OPPOSITE HAND. SEE ELEVATIONS FOR QUANTITIES, LOCATIONS, AND INSTALLATION.
 - COORDINATE ALL HARDWARE WITH DOOR SCHEDULE AND SPECIFICATIONS.
 - SEE DOOR SCHEDULE FOR TYPICAL DOOR TYPES, WHICH INCLUDE ALUMINUM DOORS INSTALLED IN ALUMINUM FRAMES.
 - SEE DOOR SCHEDULE FOR TYPES AND DETAILS OF DOORS IN ALUMINUM STOREFRONT FRAMES.
 - FRAME TYPES, AS DEPICTED, REFLECT THE EXTERIOR CONDITION OF THE FRAME.
 - PROVIDE MANUALLY OPERATED ROLLER SHADES AT LOCATIONS INDICATED. SHADES COVER FULL HEIGHT OF GLAZING, U.N.O.
 - U.N.O. FILL SHIM SPACE AT SFC DW & R.O. WITH L.D.F.
 - ALSO, CONTS IN SHADE FABRIC WITH MAJOR VERTICAL MELLONS, TYP.
 - ROLLER SHADES SHALL COVER OPERABLE SASH WITHOUT INTERRUPTION. PROVIDE INDIVIDUAL DOOR-MOUNTED ROLLER SHADES AT DOOR GLAZING.
 - ROLLER SHADES NOT REQUIRED BEHIND SPANDREL GLASS OR AT INSULATED METAL PANELS U.N.O.

FRAME TYPE

TYPICAL WINDOW TAG PA1-# WINDOW NUMBER BUILDING AREA

TAG	DESCRIPTION	SPEC#	BOD
P	VINYL	XX-XXXX	INTUS
S	STOREFRONT	XX-XXXX	KAWNEER TRFAB 451 UT
C	CURTAINWALL	XX-XXXX	KAWNEER 1600 UT

GLAZING TYPES

IQL-1	CLEAR VISION, EXTERIOR INSULATED, REF SPEC.
IQL-2	CLEAR VISION, EXTERIOR INSULATED & LAMINATED, REF SPEC.
IQL-3	SPANDREL EXTERIOR INSULATED, REF SPEC.
IQL-4	FRITTED, EXTERIOR INSULATED, REF SPEC.
IQL-5	CLEAR, INTERIOR INSULATED & LAMINATED, REF SPEC.
IQL-6	CLEAR, FRIE PATED & LAMINATED, REF SPEC.
IQL-7	FROSTED, EXTERIOR INSULATED & LAMINATED, REF SPEC.
GL-1	CLEAR, INTERIOR LAMINATED, REF SPEC.
GL-2	CLEAR, INTERIOR MONOLITHIC, REF SPEC.

GLAZING NOTES

- ALL GLAZING ON THE PROJECT IS TO BE TEMPERED.
- ALL SPANDREL GLAZING SHOWN IS SHADED.
- ALL EXTERIOR GLAZING IS GL-1, U.N.O.
- ALL INTERIOR GLAZING IS GL-1, U.N.O.

FINISH KEY

[Pattern]	MODULAR BRICK FINISH, REF WALL TYPES	[Pattern]	4" WIDE SLATE PANELS, REF WALL TYPES
[Pattern]	FIBER CEMENT FINISH, REF WALL TYPES	[Pattern]	TERRACOTTA FINISH, REF WALL TYPES
[Pattern]	GROUNDFACE CMU		

ENLARGED BUILDING ELEVATIONS - AREA A

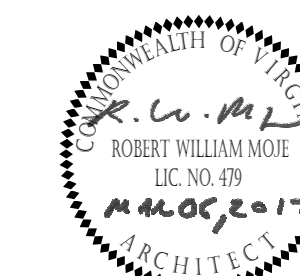
A304



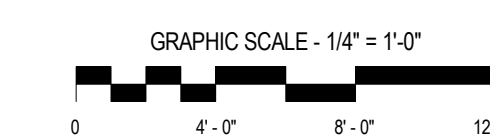
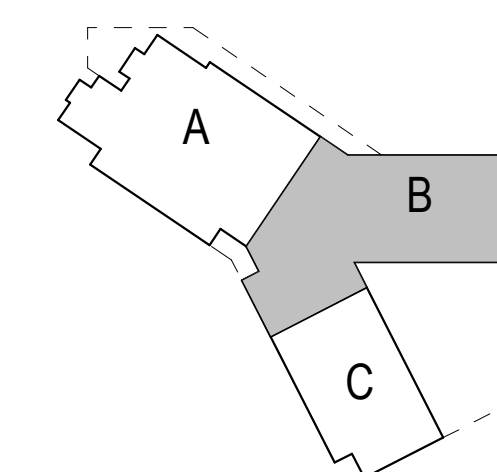
ARLINGTON PUBLIC SCHOOLS
NEW ELEMENTARY SCHOOL #2
AT THE SITE OF THOMAS JEFFERSON MIDDLE SCHOOL

125 South Old Glebe Rd
Arlington, VA 22204

Client Project Number 60FY16
VMDO Project Number 1152



Checked By PMD
Drawn By DEM

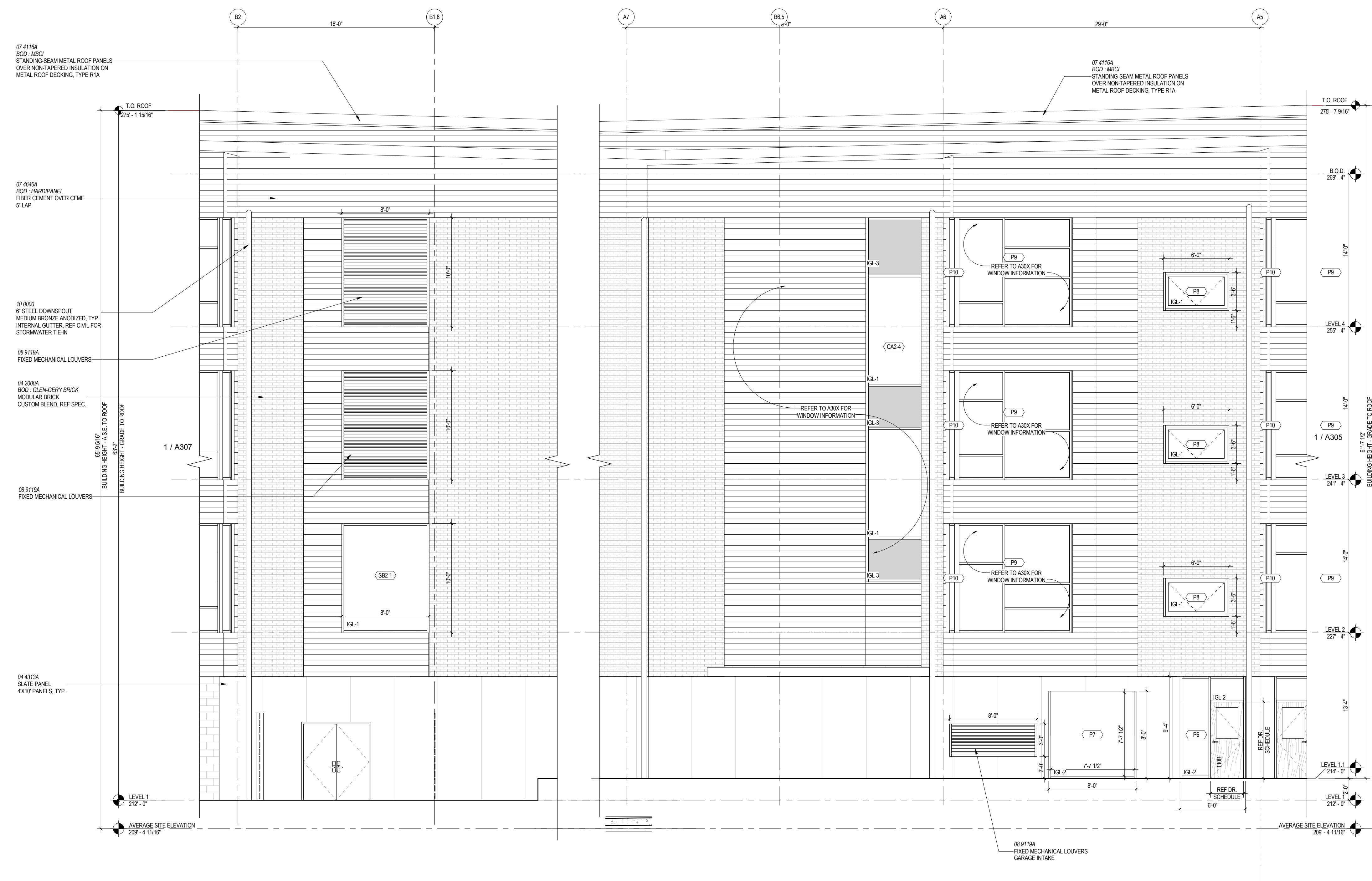


DRAWING NOT FOR CONSTRUCTION

ISSUES AND REVISIONS
NO. SUBMITTAL DATE

ENLARGED BUILDING ELEVATIONS - AREA B

A306



1 BUILDING ELEVATION - AREA B, NORTH CONT.
A112/A306 1/4" = 1'-0"

2 BUILDING ELEVATION - AREA A, NORTH
A111/A306 1/4" = 1'-0"

ELEVATION / BUILDING SECTION GENERAL NOTES

- ON SYMMETRICAL DRAWINGS, ALL NOTES AND DIMENSIONS SHOWN ON ONE HALF OF DRAWING SHALL APPLY TO BOTH HALVES OF DRAWINGS.
- PROVIDE HIGH PERFORMANCE COATINGS AT ALL EXTERIOR FERROUS METALS (STRUCTURAL AND DECORATIVE).
- INTERIOR VIEWS IN BUILDING SECTIONS ARE TYPICALLY SIMPLIFIED FOR CLARITY. REFER TO LARGER SCALED INTERIOR ELEVATIONS FOR ADDITIONAL INFORMATION.
- FOOTINGS AND FOUNDATIONS ARE SHOWN FOR ILLUSTRATION ONLY. REFER TO STRUCTURAL DRAWINGS FOR EXTENT OF WORK.
- ALL DOWNSPOUTS ARE TO BE TYPICAL, U.N.O.
- REFERENCE MEP & CIVIL DRAWINGS FOR FULL SCOPE OF M.E.P. AND CIVIL WORK.
- EXTERIOR SUNSHADES ARE DISPLAYED W/ DASHED LINES @ WINDOWS
- WOOD BOARD FLOORING TO INFLY OVER BEAMS AT GYM TO BE WESTERN RED CEDAR, ALTERNATE DOUGLASS FIR.

STOREFRONT & CURTAINWALL GENERAL NOTES

- VERIFY ALL DIMENSIONS IN FIELD PRIOR TO FABRICATION.
- SEE SPECIFICATIONS FOR GLASS TYPES.
- DNIS SHOWN ARE NOMINAL AND/OR ROUGH OPENINGS. CONTRACTOR TO ACCOUNT FOR JOINTS, SHIMS, SEALANT, ETC.
- CONTRACTOR RESPONSIBLE TO COORDINATE ALL ALUMINUM FRAMES WITH ALL RELEVANT DETAILS DEPICTED THROUGHOUT DRAWINGS.
- COORDINATE ALL ALUMINUM FRAMES WITH SPECIFICATION REQUIREMENTS, INCLUDING BUT NOT LIMITED TO PROVIDING ENGINEERING TO VERIFY WIND LOADING CRITERIA IS MET IN ALL CASES. SEE STRUCTURAL DRAWINGS.
- ALUMINUM FRAME DRAWINGS REPRESENT DESIGN INTENT. SHOP DRAWINGS ARE REQUIRED PRIOR TO FABRICATION.
- NO FRAMES SHALL BE DELIVERED OR INSTALLED PRIOR TO APPROVED SUBMITTALS WHICH INCLUDE ENGINEERING DATA AND SHOP DRAWINGS BASED ON MEASUREMENTS VERIFIED IN FIELD.
- SOME FRAME TYPES ARE REPLICATED AS SIMILAR OR OPPOSITE HAND. SEE ELEVATIONS FOR QUANTITIES, LOCATIONS, AND INSTALLATION.
- COORDINATE ALL HARDWARE WITH DOOR SCHEDULE AND SPECIFICATIONS.
- SEE DOOR SCHEDULE FOR TYPICAL DOOR TYPES, WHICH INCLUDE ALUMINUM DOORS INSTALLED IN ALUMINUM FRAMES.
- SEE DOOR SCHEDULE FOR TYPES AND DETAILS OF DOORS IN ALUMINUM STOREFRONT FRAMES.
- FRAME TYPES AS DEPICTED. REFLECT THE EXTERIOR CONDITION OF THE FRAME.
- PROVIDE MANUALLY OPERATED ROLLER SHADES AT LOCATIONS INDICATED. SHADES COVER FULL HEIGHT OF GLAZING, U.N.O.
- U.N.O. FILL SHIM SPACE AT SFCW & R.O. WITH L.D.F.
- ALIGN JOINTS IN SHADE FABRIC WITH MAJOR VERTICAL MULLIONS, TYP.
- ROLLER SHADES SHALL COVER OPERABLE SASH WITHOUT INTERRUPTION. PROVIDE INDIVIDUAL DOOR MOUNTED ROLLER SHADES AT DOOR GLAZING.
- ROLLER SHADES NOT REQUIRED BEHIND SPANDREL GLASS OR AT INSULATED METAL PANELS U.N.O.

GLAZING TYPES

GLAZING TAG	DESCRIPTION	SPEC#	BOD
IGL-1	CLEAR VISION, EXTERIOR INSULATED, REF SPEC.		
IGL-2	CLEAR VISION, EXTERIOR INSULATED & LAMINATED, REF SPEC.		
IGL-3	SPANDREL, EXTERIOR INSULATED, REF SPEC.		
IGL-4	FRITTED, EXTERIOR INSULATED, REF SPEC.		
IGL-5	CLEAR, INTERIOR INSULATED & LAMINATED, REF SPEC.		
IGL-6	CLEAR, FIRE RATED & LAMINATED, REF SPEC.		
IGL-7	FROSTED, EXTERIOR INSULATED & LAMINATED, REF SPEC.		
IGL-1	CLEAR, INTERIOR LAMINATED, REF SPEC.		
IGL-2	CLEAR, INTERIOR MONOLITHIC, REF SPEC.		

GLAZING NOTES

- ALL GLAZING ON THE PROJECT IS TO BE TEMPERED.
- ALL SPANDREL GLAZING SHOWN IS SHADED.
- ALL EXTERIOR GLAZING IS IGL-1, U.N.O.
- ALL INTERIOR GLAZING IS IGL-1, U.N.O.

FINISH KEY

	MODULAR BRICK FINISH, REF WALL TYPES
	FIBER CEMENT FINISH, REF WALL TYPES
	TERRACOTTA FINISH, REF WALL TYPES
	GROUNDFACE CMU
	4' WIDE SLATE PANELS, REF WALL TYPES

A:\Projects\A306\A306.dwg

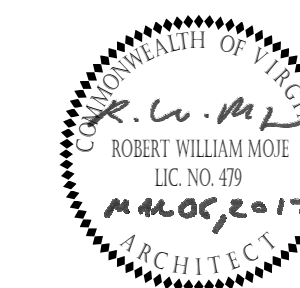
REV: 11/15/16



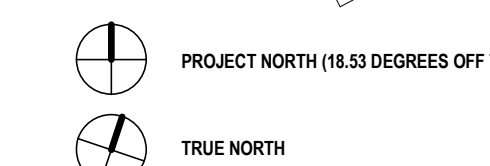
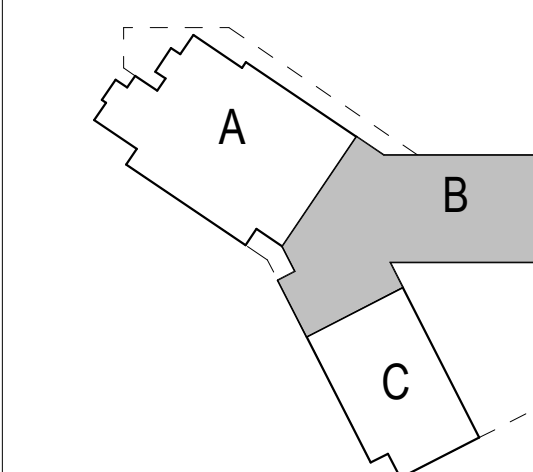
ARLINGTON PUBLIC SCHOOLS
NEW ELEMENTARY SCHOOL #2
AT THE SITE OF THOMAS JEFFERSON MIDDLE SCHOOL

125 South Old Glebe Rd
Arlington, VA 22204

Client Project Number 60FY16
VMDO Project Number 1152



Checked By PMD
Drawn By DEM

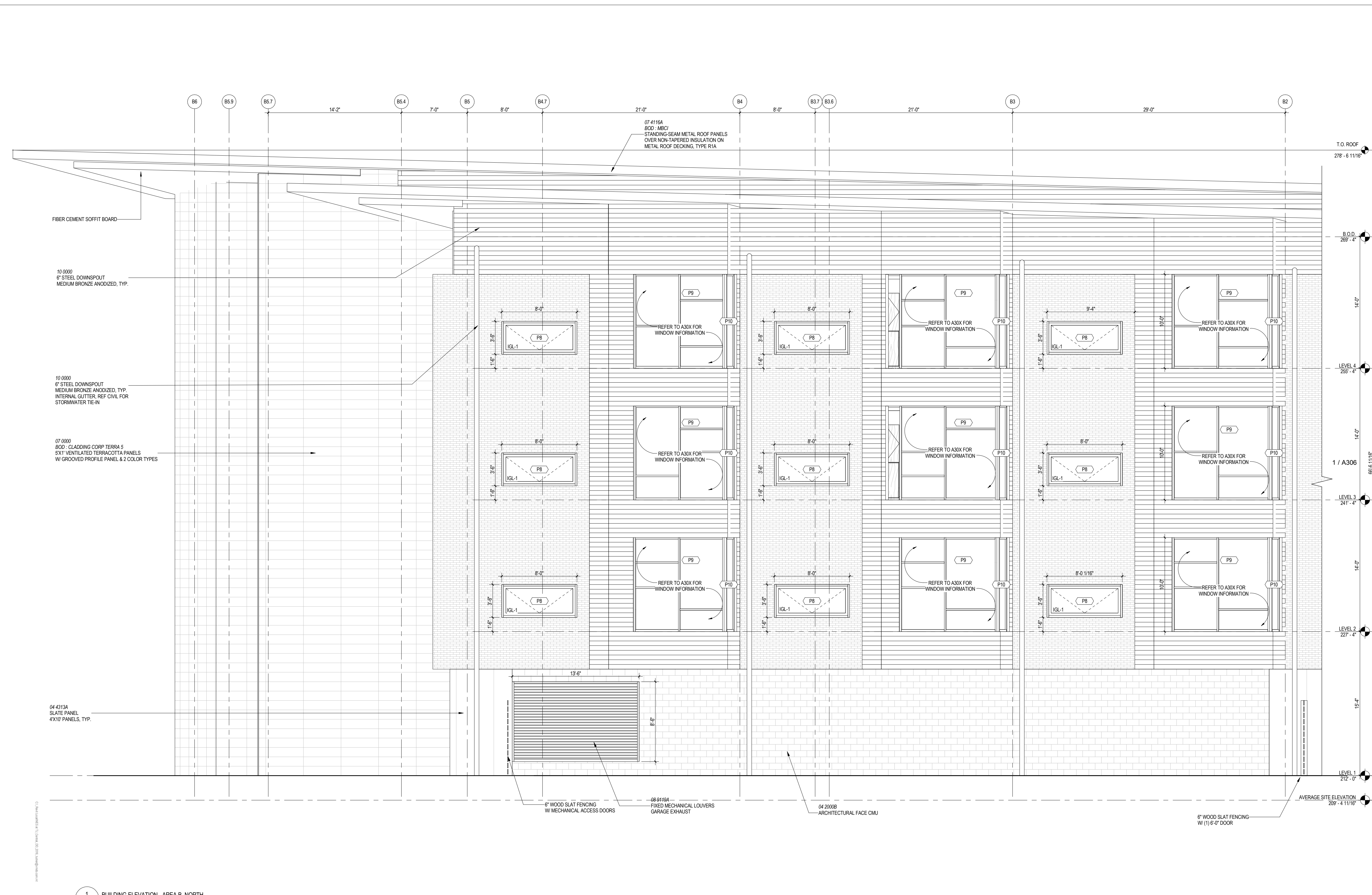


DRAWING NOT FOR CONSTRUCTION

ISSUES AND REVISIONS
NO. SUBMITTAL DATE

ENLARGED BUILDING ELEVATIONS - AREA B

A307



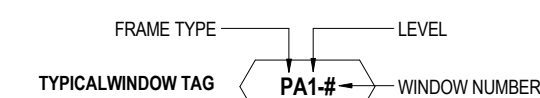
1 BUILDING ELEVATION - AREA B, NORTH
A112/A307 1/4" = 1'-0"

ELEVATION / BUILDING SECTION GENERAL NOTES

- ON SYMMETRICAL DRAWINGS, ALL NOTES AND DIMENSIONS SHOWN ON ONE-HALF OF DRAWING SHALL APPLY TO BOTH HALVES OF DRAWINGS.
- PROVIDE HIGH PERFORMANCE COATINGS AT ALL EXTERIOR FERROUS METALS (STRUCTURAL AND DECORATIVE).
- INTERIOR VIEWS IN BUILDING SECTIONS ARE TYPICALLY SIMPLIFIED FOR CLARITY. REFER TO LARGER SCALED INTERIOR ELEVATIONS FOR ADDITIONAL INFORMATION.
- FOOTINGS AND FOUNDATIONS ARE SHOWN FOR ILLUSTRATION ONLY. REFER TO STRUCTURAL DRAWINGS FOR EXTENT OF WORK.
- ALL DOWNSPOUTS ARE TO BE TYPICAL, U.N.O.
- REFERENCE MEP & CIVIL DRAWINGS FOR FULL SCOPE OF M.E.P. AND CIVIL WORK.
- EXTERIOR SUNSHADES ARE DISPLAYED BY DASHED LINES @ WINDOWS.
- WOOD BOARD BLOCKING TO INFILL OVER BEAMS AT GYM TO BE WESTERN RED CEDAR, ALTERNATE DOUGLAS FIR.

STOREFRONT & CURTAINWALL GENERAL NOTES

- VERIFY ALL DIMENSIONS IN FIELD PRIOR TO FABRICATION.
- SEE SPECIFICATIONS FOR GLASS TYPES.
- DIMS SHOWN ARE NOMINAL AND/OR ROUGH OPENINGS. CONTRACTOR TO ACCOUNT FOR JOINTS, SHIMS, SEALANT, ETC.
- CONTRACTOR RESPONSIBLE TO COORDINATE ALL ALUMINUM FRAMES WITH ALL RELEVANT DETAILS DEPICTED THROUGHOUT DRAWINGS.
- COORDINATE ALL ALUMINUM FRAMES WITH SPECIFICATION REQUIREMENTS, INCLUDING BUT NOT LIMITED TO PROVIDING ENGINEERING TO VERIFY WIND LOADING CRITERIA IS MET IN ALL CASES. SEE STRUCTURAL DRAWINGS.
- ALUMINUM FRAME DRAWINGS REPRESENT DESIGN INTENT. SHOP DRAWINGS ARE REQUIRED PRIOR TO FABRICATION.
- NO FRAMES SHALL BE DELIVERED OR INSTALLED PRIOR TO APPROVED SUBMITTALS WHICH INCLUDE ENGINEERING DATA AND SHOP DRAWINGS BASED ON MEASUREMENTS VERIFIED IN FIELD.
- SOME FRAME TYPES ARE REPEATED AS SIMILAR OR OPPOSITE HAND. SEE ELEVATIONS FOR QUANTITIES, LOCATIONS, AND INSTALLATION.
- COORDINATE ALL HARDWARE WITH DOOR SCHEDULE AND SPECIFICATIONS.
- SEE DOOR SCHEDULE FOR TYPICAL DOOR TYPES, WHICH INCLUDE ALUMINUM DOORS INSTALLED IN ALUMINUM STOREFRONT FRAMES.
- SEE DOOR SCHEDULE FOR TYPES AND DETAILS OF DOORS IN ALUMINUM STOREFRONT FRAMES.
- FRAME TYPES, AS DEPICTED, REFLECT THE EXTERIOR CONDITION OF THE FRAME.
- PROVIDE MANUALLY OPERATED ROLLER SHADES AT LOCATIONS INDICATED. SHADES COVER FULL HEIGHT OF GLAZING, U.N.O.
- U.N.O. FILL SHIM SPACE AT SFC, W & R.O. WITH L.D.F.
- AUGER JOINTS IN SHADE FABRIC WITH MAJOR VERTICAL MULLIONS, TYP.
- ROLLER SHADES SHALL COVER OPERABLE GLASS WITHOUT INTERRUPTION. PROVIDE INDIVIDUAL DOOR-MOUNTED ROLLER SHADES AT DOOR GLAZING.
- ROLLER SHADES NOT REQUIRED BEHIND SPANDREL GLASS OR AT INSULATED METAL PANELS U.N.O.



FRAME TYPE	LEVEL
PA1-2	WINDOW NUMBER
	BUILDING AREA

WINDOW FRAME TYPES	SPEC	BOB
P	VNXL	XX-XXXX INTUS
S	STOREFRONT	XX-XXXX KAWNEER TRFAB 451 UT
C	CURTAINWALL	XX-XXXX KAWNEER 1600 UT

- GLAZING TYPES**
- IGL-1 CLEAR VISION, EXTERIOR INSULATED, REF SPEC.
 - IGL-2 CLEAR VISION, EXTERIOR INSULATED & LAMINATED, REF SPEC.
 - IGL-3 SPANDREL, EXTERIOR INSULATED, REF SPEC.
 - IGL-4 FRITTED, EXTERIOR INSULATED, REF SPEC.
 - IGL-6 CLEAR, INTERIOR INSULATED & LAMINATED, REF SPEC.
 - IGL-4 CLEAR, FIRE RATED & LAMINATED, REF SPEC.
 - IGL-7 FROSTED, EXTERIOR INSULATED & LAMINATED, REF SPEC.
 - GL-1 CLEAR, INTERIOR LAMINATED, REF SPEC.
 - GL-2 CLEAR, INTERIOR MONOLITHIC, REF SPEC.
- GLAZING NOTES**
- ALL GLAZING ON THE PROJECT IS TO BE TEMPERED.
 - ALL SPANDREL GLAZING SHOWN IS SHADED.
 - ALL EXTERIOR GLAZING IS IG-1, U.N.O.
 - ALL INTERIOR GLAZING IS GL-1, U.N.O.

FINISH KEY

- MODULAR BRICK FINISH, REF WALL TYPES
- FIBER CEMENT FINISH, REF WALL TYPES
- TERRACOTTA FINISH, REF WALL TYPES
- GROUNDFACE CMU
- 4" WIDE SLATE PANELS, REF WALL TYPES

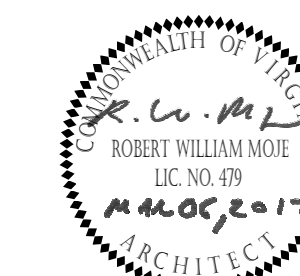
11/15/2016 10:00 AM 11/15/2016 10:00 AM 11/15/2016 10:00 AM
 11/15/2016 10:00 AM 11/15/2016 10:00 AM 11/15/2016 10:00 AM



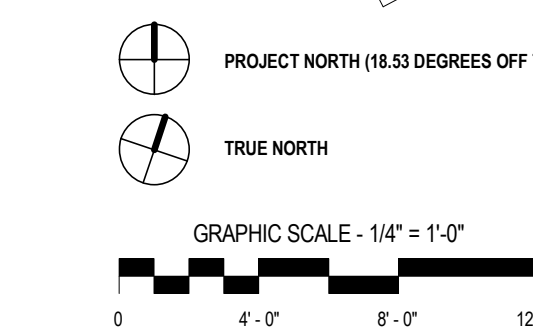
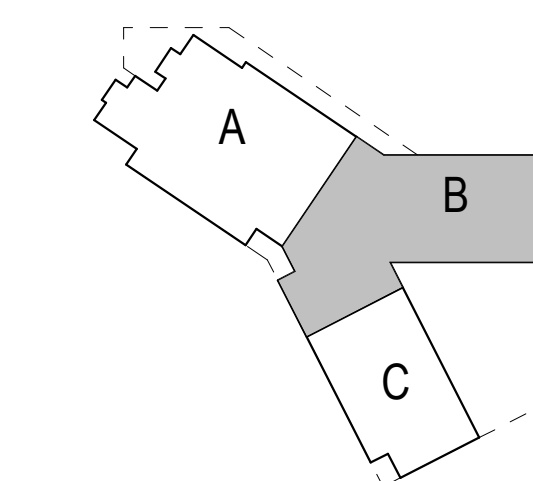
ARLINGTON PUBLIC SCHOOLS
NEW ELEMENTARY SCHOOL #2
AT THE SITE OF THOMAS JEFFERSON MIDDLE SCHOOL

125 South Old Glebe Rd
Arlington, VA 22204

Client Project Number 60FY16
VMDO Project Number 1152



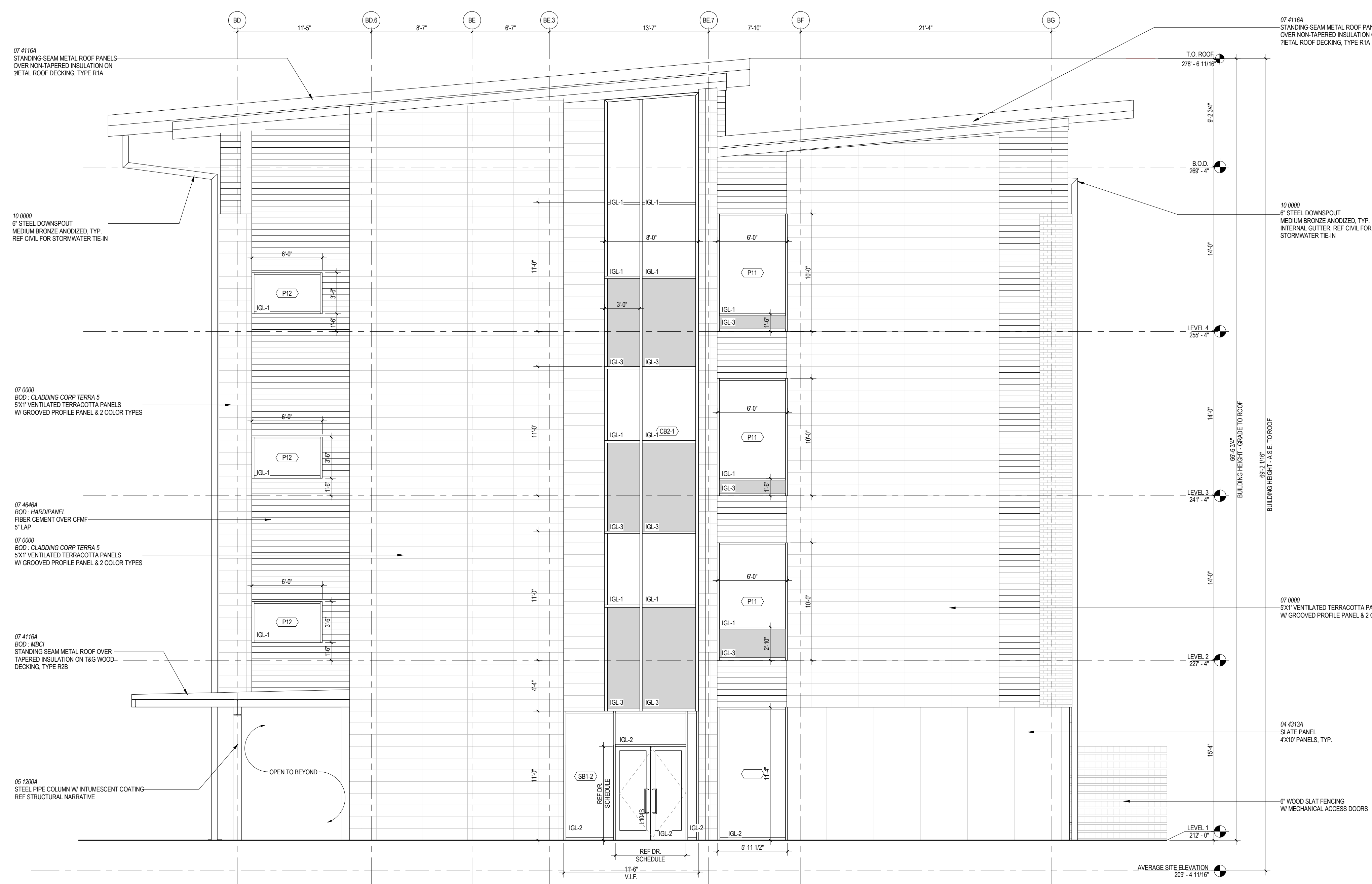
Checked By PMD
Drawn By DEM



DRAWING NOT FOR CONSTRUCTION

ISSUES AND REVISIONS

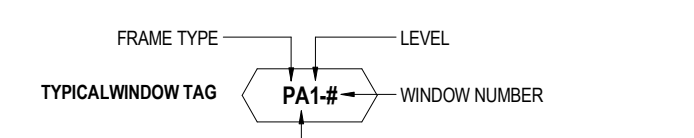
NO.	SUBMITTAL	DATE
	USE PERMIT RESUBMISSION	03.06.2017



1 BUILDING ELEVATION - AREA B, EAST
A111/A308 1/4" = 1'-0"

- ELEVATION / BUILDING SECTION GENERAL NOTES**
- ON SYMMETRICAL DRAWINGS, ALL NOTES AND DIMENSIONS SHOWN ON ONE-HALF OF DRAWING SHALL APPLY TO BOTH HALVES OF DRAWINGS.
 - PROVIDE HIGH PERFORMANCE COATINGS AT ALL EXTERIOR FERROUS METALS (STRUCTURAL AND DECORATIVE).
 - INTERIOR VIEWS IN BUILDING SECTIONS ARE TYPICALLY SIMPLIFIED FOR CLARITY. REFER TO LARGER SCALED INTERIOR ELEVATIONS FOR ADDITIONAL INFORMATION.
 - FOOTINGS AND FOUNDATIONS ARE SHOWN FOR ILLUSTRATION ONLY. REFER TO STRUCTURAL DRAWINGS FOR EXTENT OF WORK.
 - ALL DOWNSPOUTS ARE TO BE 6" TYPICAL, U.N.O.
 - REFERENCE MEP & CIVIL DRAWINGS FOR FULL SCOPE OF M.E.P. AND CIVIL WORK.
 - EXTERIOR SUNSHADES ARE DISPLAYED W/ DASHED LINES @ WINDOWS. WOOD BOARD BLOCCING TO INFL. OVER BEAMS AT GYM TO BE WESTERN RED CEDAR. ALTERNATE DOUGLAS FIR.

- STOREFRONT & CURTAINWALL GENERAL NOTES**
- VERIFY ALL DIMENSIONS IN FIELD PRIOR TO FABRICATION.
 - SEE SPECIFICATIONS FOR GLASS TYPES.
 - DIMS SHOWN ARE NOMINAL AND/OR ROUGH OPENINGS. CONTRACTOR TO ACCOUNT FOR JOINTS, SHIMS, SEALANT, ETC.
 - COORDINATE ALL ALUMINUM FRAMES WITH ALL RELEVANT DETAILS DEPICTED THROUGHOUT DRAWINGS.
 - COORDINATE ALL ALUMINUM FRAMES WITH SPECIFICATION REQUIREMENTS, INCLUDING BUT NOT LIMITED TO PROVIDING ENGINEERING TO VERIFY WIND LOADING CRITERIA IS MET IN ALL CASES. SEE STRUCTURAL DRAWINGS.
 - ALUMINUM FRAME DRAWINGS REPRESENT DESIGN INTENT. SHOP DRAWINGS ARE REQUIRED PRIOR TO FABRICATION.
 - NO FRAMES SHALL BE DELIVERED OR INSTALLED PRIOR TO APPROVED SUBMITTALS WHICH INCLUDE ENGINEERING DATA AND SHOP DRAWINGS BASED ON MEASUREMENTS VERIFIED IN FIELD.
 - SOME FRAME TYPES ARE REPEATED AS SIMILAR OR OPPOSITE HAND. SEE ELEVATIONS FOR QUANTITIES, LOCATIONS, AND INSTALLATION.
 - COORDINATE ALL HARDWARE WITH DOOR SCHEDULE AND SPECIFICATIONS.
 - SEE DOOR SCHEDULE FOR TYPICAL DOOR TYPES, WHICH INCLUDE ALUMINUM DOORS INSTALLED IN ALUMINUM FRAMES.
 - SEE DOOR SCHEDULE FOR TYPES AND DETAILS OF DOORS IN ALUMINUM STOREFRONT FRAMES.
 - FRAME TYPES, AS DEPICTED, REFLECT THE EXTERIOR CONDITION OF THE FRAME.
 - PROVIDE MANUALLY-OPERATED ROLLER SHADES AT LOCATIONS INDICATED. SHADES COVER FULL HEIGHT OF GLAZING, U.N.O.
 - U.N.O. FILL SHIM SPACE AT SPOW & R.O. WITH L.D.F.
 - ALUM. JOINTS IN SHAKE FABRIC WITH MAJOR VERTICAL MILLIONS, TYP.
 - ROLLER-SHADES SHALL COVER OPERABLE SASH WITHOUT INTERRUPTION. PROVIDE INDIVIDUAL DOOR-MOUNTED ROLLER SHADES AT DOOR GLAZING.
 - ROLLER SHADES NOT REQUIRED BEHIND SPANDREL GLASS OR AT INSULATED METAL PANELS U.N.O.



WINDOW FRAME TYPES

TAG	DESCRIPTION	SPEC#	BOB
P	VINYL	XX-XXXX	INTUS
S	STOREFRONT	XX-XXXX	KAWNEER, TRIFAB 451 UT
C	CURTAINWALL	XX-XXXX	KAWNEER, 1600 UT

- GLAZING TYPES**
- IGL-1 CLEAR VISION, EXTERIOR INSULATED, REF SPEC.
 - IGL-2 CLEAR VISION, EXTERIOR INSULATED & LAMINATED, REF SPEC.
 - IGL-3 SPANDREL, EXTERIOR INSULATED, REF SPEC.
 - IGL-4 FRITTED, EXTERIOR INSULATED, REF SPEC.
 - IGL-5 CLEAR, INTERIOR INSULATED & LAMINATED, REF SPEC.
 - IGL-6 CLEAR, FIRE RATED & LAMINATED, REF SPEC.
 - IGL-7 FROSTED, EXTERIOR INSULATED & LAMINATED, REF SPEC.
 - GL-1 CLEAR, INTERIOR LAMINATED, REF SPEC.
 - GL-2 CLEAR, INTERIOR MONOLITHIC, REF SPEC.

- GLAZING NOTES**
- ALL GLAZING ON THE PROJECT IS TO BE TEMPERED.
 - ALL SPANDREL GLAZING SHOWN IS SHADED.
 - ALL EXTERIOR GLAZING IS IGL-1, U.N.O.
 - ALL INTERIOR GLAZING IS GL-1, U.N.O.

- FINISH KEY**
- MODULAR BRICK FINISH, REF WALL TYPES
 - FIBER CEMENT FINISH, REF WALL TYPES
 - TERRACOTTA FINISH, REF WALL TYPES
 - GROUNDFACE CMU
 - 4" WIDE SLATE PANELS, REF WALL TYPES

ENLARGED BUILDING ELEVATIONS - AREA B

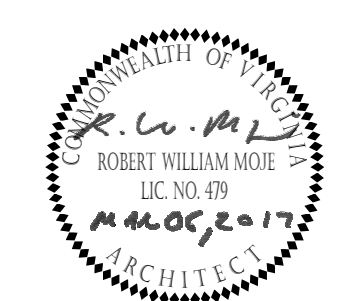
A308



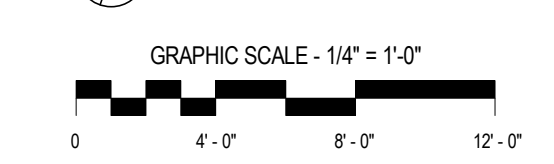
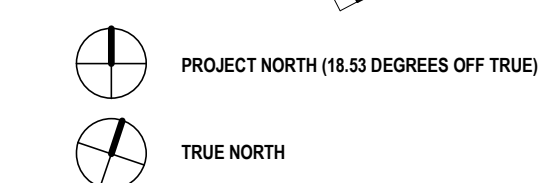
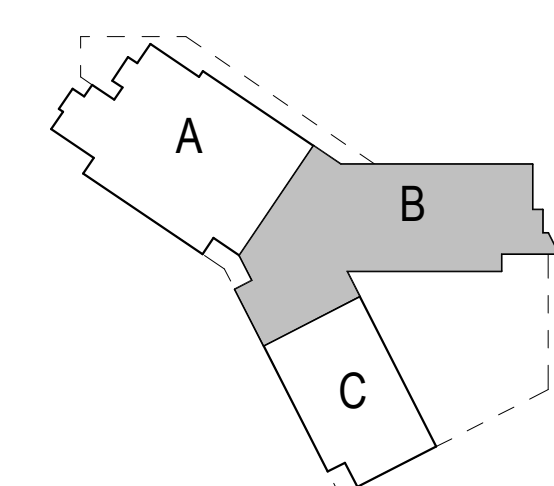
ARLINGTON PUBLIC SCHOOLS
NEW ELEMENTARY SCHOOL #2
AT THE SITE OF THOMAS JEFFERSON MIDDLE SCHOOL

125 South Old Glebe Rd
Arlington, VA 22204

Client Project Number 60FY16
VMDO Project Number 1152

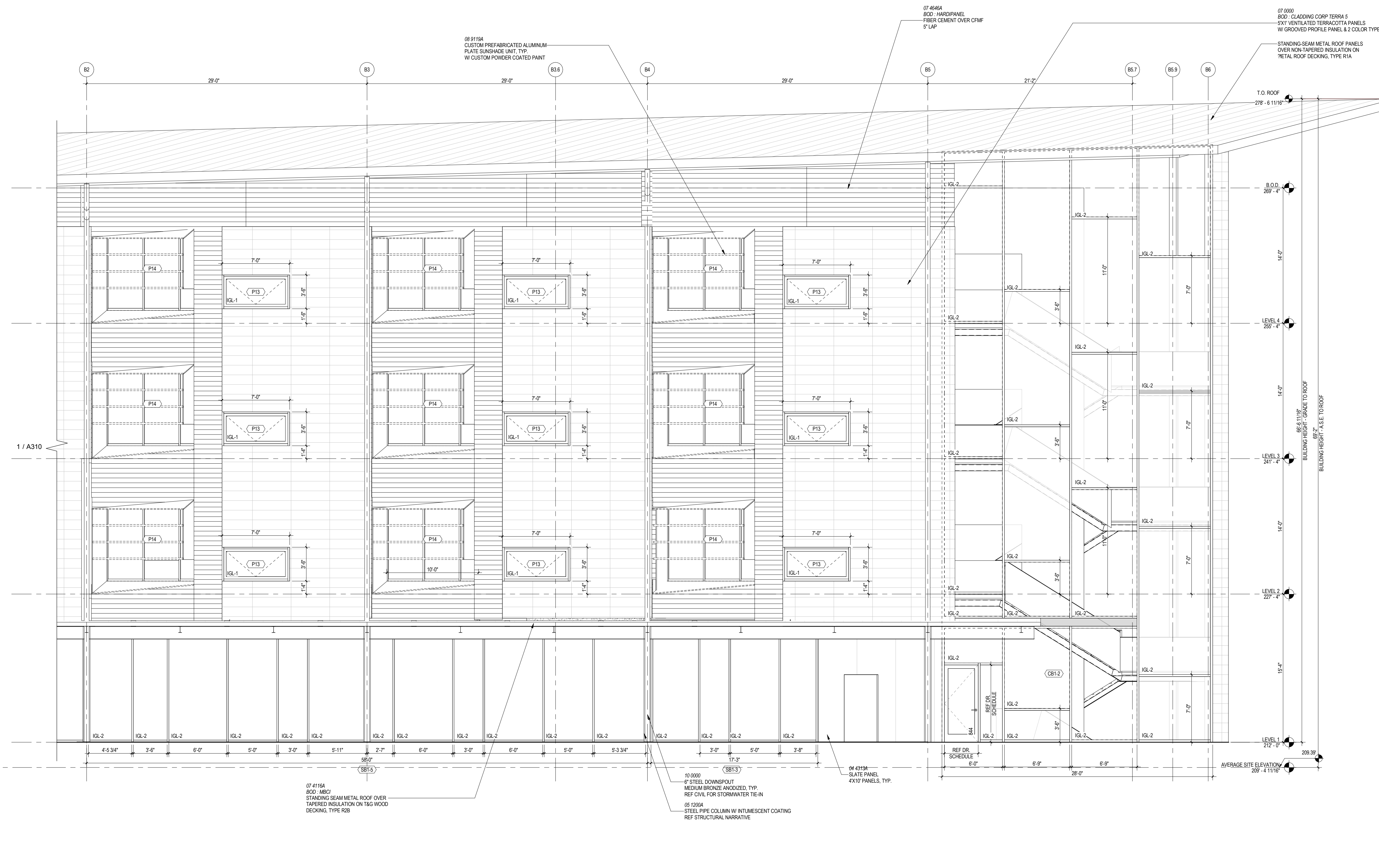


Checked By PMD
Drawn By DEM



DRAWING NOT FOR CONSTRUCTION

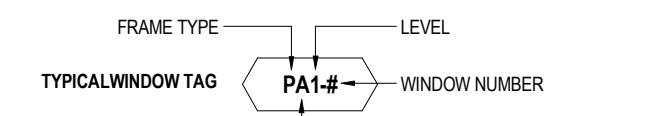
ISSUES AND REVISIONS
NO. SUBMITTAL DATE



1 BUILDING ELEVATION - AREA B, SOUTH CONT.
A112/A309 1/4" = 1'-0"

- ELEVATION / BUILDING SECTION GENERAL NOTES**
- ON SYMMETRICAL DRAWINGS, ALL NOTES AND DIMENSIONS SHOWN ON ONE-HALF OF DRAWING SHALL APPLY TO BOTH HALVES OF DRAWINGS.
 - PROVIDE HIGH PERFORMANCE COATINGS AT ALL EXTERIOR FERROUS METALS (STRUCTURAL AND DECORATIVE).
 - INTERIOR VIEWS IN BUILDING SECTIONS ARE TYPICALLY SIMPLIFIED FOR CLARITY. REFER TO LARGER SCALED INTERIOR ELEVATIONS FOR ADDITIONAL INFORMATION.
 - FOOTINGS AND FOUNDATIONS ARE SHOWN FOR ILLUSTRATION ONLY. REFER TO STRUCTURAL DRAWINGS FOR EXTENT OF WORK.
 - ALL DOWNSPOUTS ARE TO BE 1" TYPICAL, U.N.O.
 - REFERENCE MEP & CIVIL DRAWINGS FOR FULL SCOPE OF M.E.P. AND CIVIL WORK.
 - EXTERIOR SUNSHADES ARE DISPLAYED W/ DASHED LINES @ WINDOWS.
 - WOOD BOARD BLOCKING TO INFL OVER BEAMS AT GYM TO BE WESTERN RED CEDAR, ALTERNATE DOUGLAS FIR.

- STOREFRONT & CURTAINWALL GENERAL NOTES**
- VERIFY ALL DIMENSIONS IN FIELD PRIOR TO FABRICATION.
 - SEE SPECIFICATIONS FOR GLASS TYPES.
 - DIMS SHOWN ARE NOMINAL AND/OR ROUGH OPENINGS. CONTRACTOR TO ACCOUNT FOR JOINTS, SHIMS, SEALANT, ETC.
 - CONTRACTOR RESPONSIBLE TO COORDINATE ALL ALUMINUM FRAMES WITH ALL RELEVANT DETAILS DEPICTED THROUGHOUT DRAWINGS.
 - COORDINATE ALL ALUMINUM FRAMES WITH SPECIFICATION REQUIREMENTS, INCLUDING BUT NOT LIMITED TO PROVIDING ENGINEERING TO VERIFY WIND LOADING CRITERIA IS MET IN ALL CASES. SEE STRUCTURAL DRAWINGS.
 - ALUMINUM FRAME DRAWINGS REPRESENT DESIGN INTENT. SHOP DRAWINGS ARE REQUIRED PRIOR TO FABRICATION.
 - NO FRAMES SHALL BE DELIVERED OR INSTALLED PRIOR TO APPROVED SUBMITTALS WHICH INCLUDE ENGINEERING DATA AND SHOP DRAWINGS BASED ON MEASUREMENTS VERIFIED IN FIELD.
 - SOME FRAME TYPES ARE REPEATED AS SIMILAR OR OPPOSITE HAND. SEE ELEVATIONS FOR QUANTITIES, LOCATIONS, AND INSTALLATION.
 - COORDINATE ALL HARDWARE WITH DOOR SCHEDULE AND SPECIFICATIONS.
 - SEE DOOR SCHEDULE FOR TYPICAL DOOR TYPES, WHICH INCLUDE ALUMINUM DOORS INSTALLED IN ALUMINUM FRAMES.
 - SEE DOOR SCHEDULE FOR TYPES AND DETAILS OF DOORS IN ALUMINUM STOREFRONT FRAMES.
 - FRAME TYPES, AS DEPICTED, REFLECT THE EXTERIOR CONDITION OF THE FRAME.
 - PROVIDE MANUALLY OPERATED ROLLER SHADES AT LOCATIONS INDICATED. SHADES COVER FULL HEIGHT OF GLAZING, U.N.O.
 - U.N.O. FILL SHIM SPACE AT SFC'W & R.O. WITH L.F.F.
 - ALUON JOINTS IN SHADE FABRIC WITH MAJOR VERTICAL MULLIONS, TYP.
 - ROLLER SHADES SHALL COVER OPERABLE SASH WITHOUT INTERRUPTION. PROVIDE INDIVIDUAL DOOR-MOUNTED ROLLER SHADES AT DOOR GLAZING.
 - ROLLER SHADES NOT REQUIRED BEHIND SPANDREL GLASS OR AT INSULATED METAL PANELS U.N.O.



WINDOW FRAME TYPES

TAG	DESCRIPTION	SPEC#	BOD
P	VINYL	XX-XXXX	INTUS
S	STOREFRONT	XX-XXXX	KAWNEER, TRIFAB 451 UT
C	CURTAINWALL	XX-XXXX	KAWNEER, 1600 UT

GLAZING TYPES

IGL-1	CLEAR VISION, EXTERIOR INSULATED, REF SPEC.
IGL-2	CLEAR VISION, EXTERIOR INSULATED & LAMINATED, REF SPEC.
IGL-3	SPANDREL, EXTERIOR INSULATED, REF SPEC.
IGL-4	FRITTED, EXTERIOR INSULATED, REF SPEC.
IGL-5	CLEAR, INTERIOR INSULATED & LAMINATED, REF SPEC.
IGL-6	CLEAR, FIRE RATED & LAMINATED, REF SPEC.
IGL-7	FROSTED, EXTERIOR INSULATED & LAMINATED, REF SPEC.
IGL-1	CLEAR, INTERIOR LAMINATED, REF SPEC.
GL-2	CLEAR, INTERIOR MONOLITHIC, REF SPEC.

- GLAZING NOTES**
- ALL GLAZING ON THE PROJECT IS TO BE TEMPERED.
 - ALL SPANDREL GLAZING SHOWN IS SHADED.
 - ALL EXTERIOR GLAZING IS IGL-1, U.N.O.
 - ALL INTERIOR GLAZING IS GL-1, U.N.O.

FINISH KEY

[Brick pattern]	MODULAR BRICK FINISH, REF WALL TYPES
[Horizontal lines]	FIBER CEMENT FINISH, REF WALL TYPES
[Tiled pattern]	TERRACOTTA FINISH, REF WALL TYPES
[Brick pattern]	GROUNDFACE CMU
[Slate pattern]	4" WIDE SLATE PANELS, REF WALL TYPES

ENLARGED BUILDING ELEVATIONS - AREA B

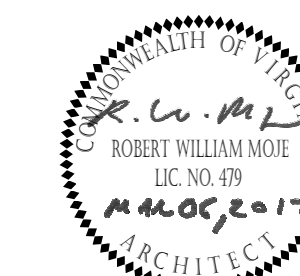
A309



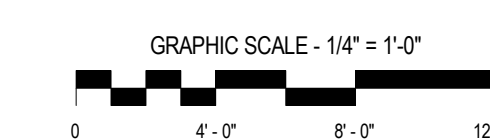
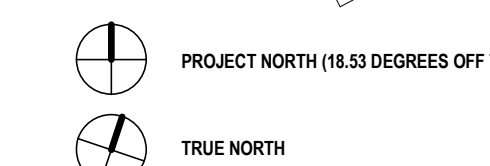
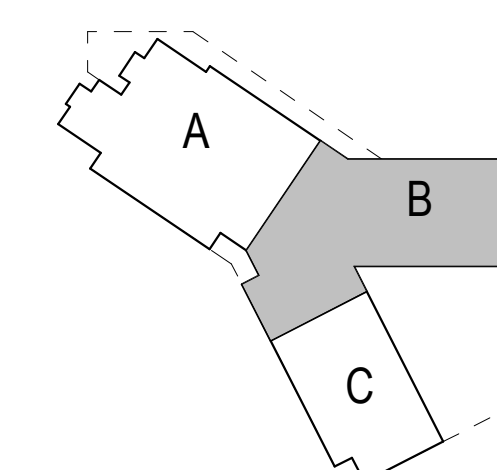
ARLINGTON PUBLIC SCHOOLS
NEW ELEMENTARY SCHOOL #2
AT THE SITE OF THOMAS JEFFERSON MIDDLE SCHOOL

125 South Old Glebe Rd
Arlington, VA 22204

Client Project Number 60FY16
VMDO Project Number 1152

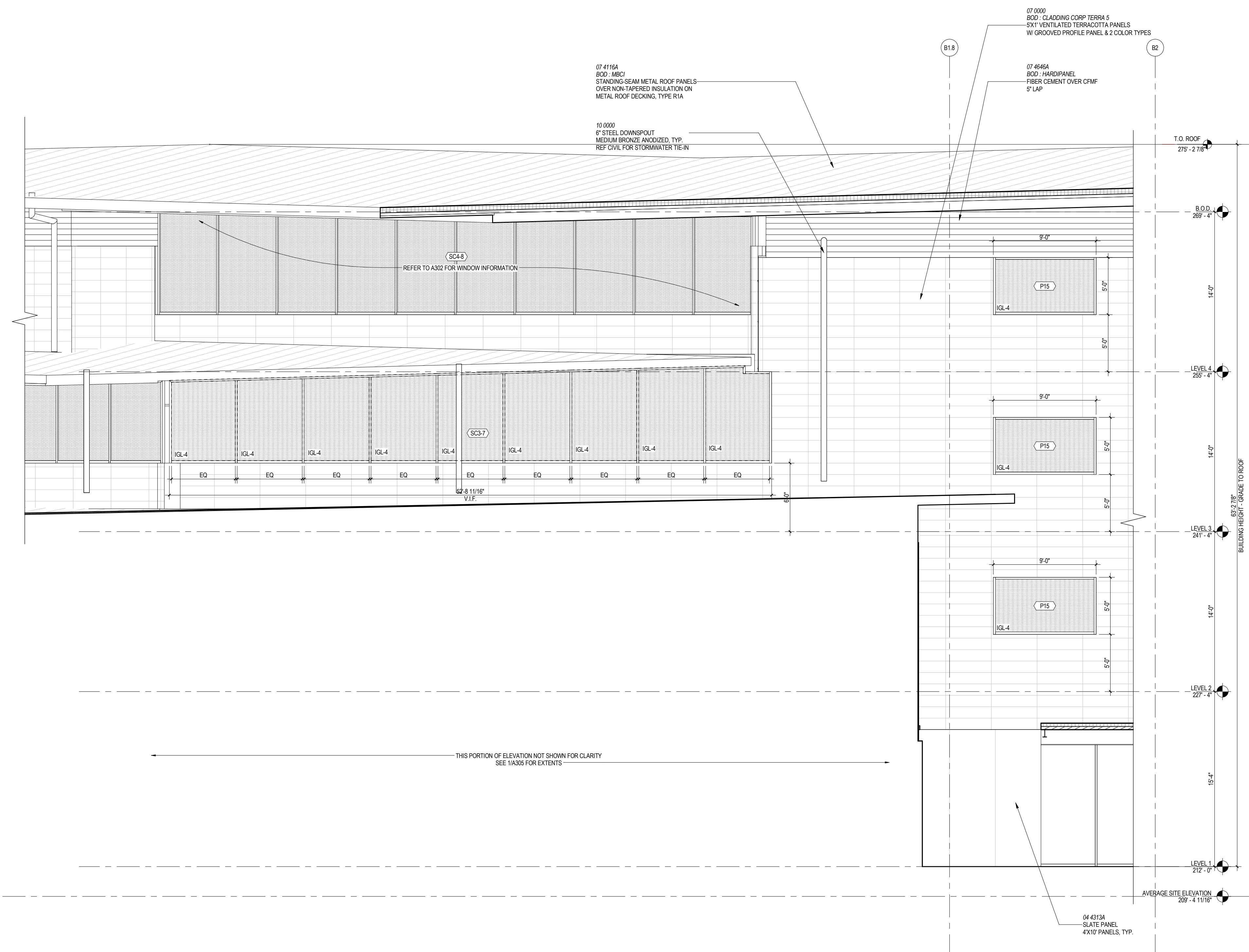


Checked By PMD
Drawn By DEM



DRAWING NOT FOR CONSTRUCTION

ISSUES AND REVISIONS
NO. SUBMITTAL DATE
USE PERMIT RESUBMISSION 03.06.2017



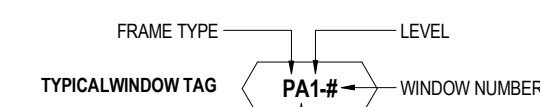
1 BUILDING ELEVATION - AREA B, SOUTH
1/4" = 1'-0"

ELEVATION / BUILDING SECTION GENERAL NOTES

- ON SYMMETRICAL DRAWINGS, ALL NOTES AND DIMENSIONS SHOWN ON ONE-HALF OF DRAWING SHALL APPLY TO BOTH HALVES OF DRAWINGS.
- PROVIDE HIGH PERFORMANCE COATINGS AT ALL EXTERIOR FERROUS METALS (STRUCTURAL AND DECORATIVE).
- INTERIOR VIEWS IN BUILDING SECTIONS ARE TYPICALLY SIMPLIFIED FOR CLARITY. REFER TO LARGER SCALED INTERIOR ELEVATIONS FOR ADDITIONAL INFORMATION.
- FOOTINGS AND FOUNDATIONS ARE SHOWN FOR ILLUSTRATION ONLY. REFER TO STRUCTURAL DRAWINGS FOR EXTENT OF WORK.
- ALL DOWNSPOUTS ARE TO BE 6" TYPICAL, U.N.O.
- REFERENCE MEP & CIVIL DRAWINGS FOR FULL SCOPE OF M.E.P. AND CIVIL WORK.
- EXTERIOR SUNSHADES ARE DISPLAYED W/ DASHED LINES @ WINDOWS. WOOD BOARD BLOCKING TO INFL. OVER BEAMS AT GYM TO BE WESTERN RED CEDAR. ALTERNATE DOUGLAS FIR.

STOREFRONT & CURTAINWALL GENERAL NOTES

- VERIFY ALL DIMENSIONS IN FIELD PRIOR TO FABRICATION.
- SEE SPECIFICATIONS FOR GLASS TYPES.
- DIMS SHOWN ARE NOMINAL AND/OR ROUGH OPENINGS. CONTRACTOR TO ACCOUNT FOR JOINTS, SHIMS, SEALANT, ETC.
- CONTRACTOR RESPONSIBLE TO COORDINATE ALL ALUMINUM FRAMES WITH ALL RELEVANT DETAILS DEPICTED THROUGHOUT DRAWINGS.
- COORDINATE ALL ALUMINUM FRAMES WITH SPECIFICATION REQUIREMENTS, INCLUDING BUT NOT LIMITED TO PROVIDING ENGINEERING TO VERIFY WIND LOADING CRITERIA IS MET IN ALL CASES. SEE STRUCTURAL DRAWINGS.
- ALUMINUM FRAME DRAWINGS REPRESENT DESIGN INTENT. SHOP DRAWINGS ARE REQUIRED PRIOR TO FABRICATION.
- NO FRAMES SHALL BE DELIVERED OR INSTALLED PRIOR TO APPROVED SUBMITTALS WHICH INCLUDE ENGINEERING DATA AND SHOP DRAWINGS BASED ON MEASUREMENTS VERIFIED IN FIELD.
- SOME FRAME TYPES ARE REPEATED AS SIMILAR OR OPPOSITE HAND. SEE ELEVATIONS FOR QUANTITIES, LOCATIONS, AND INSTALLATION.
- COORDINATE ALL HARDWARE WITH DOOR SCHEDULE AND SPECIFICATIONS.
- SEE DOOR SCHEDULE FOR TYPICAL DOOR TYPES, WHICH INCLUDE ALUMINUM DOORS INSTALLED IN ALUMINUM FRAMES.
- SEE DOOR SCHEDULE FOR TYPES AND DETAILS OF DOORS IN ALUMINUM STOREFRONT FRAMES.
- FRAME TYPES, AS DEPICTED, REFLECT THE EXTERIOR CONDITION OF THE FRAME.
- PROVIDE MANUALLY-OPERATED ROLLER SHADES AT LOCATIONS INDICATED. SHADES COVER FULL HEIGHT OF GLAZING, U.N.O.
- U.N.O. FILL SHIM SPACE AT SFOW & R.G. WITH L.D.F.
- ALUM. JOINTS IN SHAKE FABRIC WITH MAJOR VERTICAL MILLIONS. TYP.
- ROLLER SHADES SHALL COVER OPERABLE SASH WITHOUT INTERRUPTION. PROVIDE INDIVIDUAL DOOR-MOUNTED ROLLER SHADES AT DOOR GLAZING.
- ROLLER SHADES NOT REQUIRED BEHIND SPANDREL GLASS OR AT INSULATED METAL PANELS U.N.O.



FRAME TYPE	LEVEL	WINDOW NUMBER
PA1-#	#	#

WINDOW FRAME TYPES	SPEC#	BOB
P	VINYL	XX-XXXX INTUS
S	STOREFRONT	XX-XXXX KAWNEER TRIFAB 451 UT
C	CURTAINWALL	XX-XXXX KAWNEER 1600 UT

GLAZING TYPES	DESCRIPTION
IGL-1	CLEAR VISION, EXTERIOR INSULATED, REF SPEC.
IGL-2	CLEAR VISION, EXTERIOR INSULATED & LAMINATED, REF SPEC.
IGL-3	SPANDREL, EXTERIOR INSULATED, REF SPEC.
IGL-4	FRITTED, EXTERIOR INSULATED, REF SPEC.
IGL-5	CLEAR, INTERIOR INSULATED & LAMINATED, REF SPEC.
IGL-6	CLEAR, FIRE RATED & LAMINATED, REF SPEC.
IGL-7	FROSTED, EXTERIOR INSULATED & LAMINATED, REF SPEC.
GL-1	CLEAR, INTERIOR LAMINATED, REF SPEC.
GL-2	CLEAR, INTERIOR MONOLITHIC, REF SPEC.

- #### GLAZING NOTES
- ALL GLAZING ON THE PROJECT IS TO BE TEMPERED.
 - ALL SPANDREL GLAZING SHOWN IS SHADED.
 - ALL EXTERIOR GLAZING IS IGL-1, U.N.O.
 - ALL INTERIOR GLAZING IS GL-1, U.N.O.

FINISH KEY

- MODULAR BRICK FINISH, REF WALL TYPES
- FIBER CEMENT FINISH, REF WALL TYPES
- TERRACOTTA FINISH, REF WALL TYPES
- GROUNDFACE CMU
- 4" WIDE SLATE PANELS, REF WALL TYPES

A:\Projects\1152\1152-01\1152-01.dwg

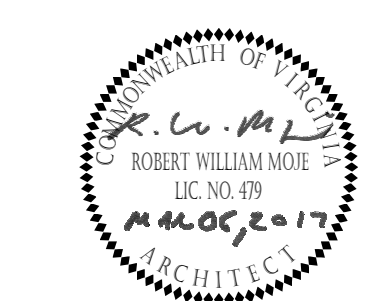
11/15/17



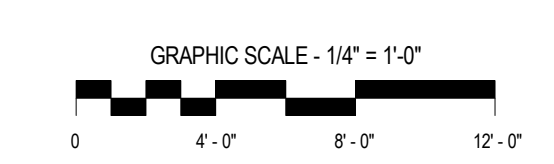
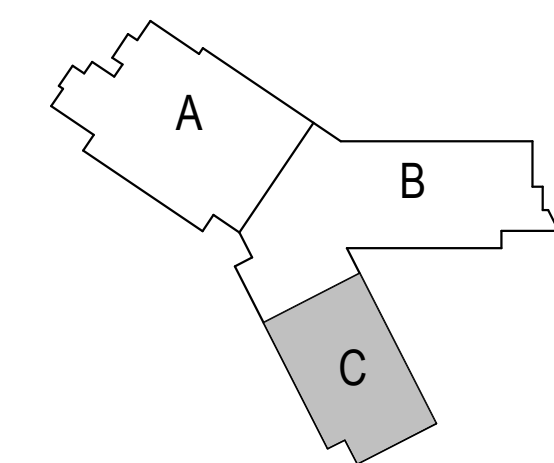
ARLINGTON PUBLIC SCHOOLS
NEW ELEMENTARY SCHOOL #2
AT THE SITE OF THOMAS JEFFERSON MIDDLE SCHOOL

125 South Old Glebe Rd
Arlington, VA 22204

Client Project Number 60FY16
VMDO Project Number 1152



Checked By PMD
Drawn By DEM



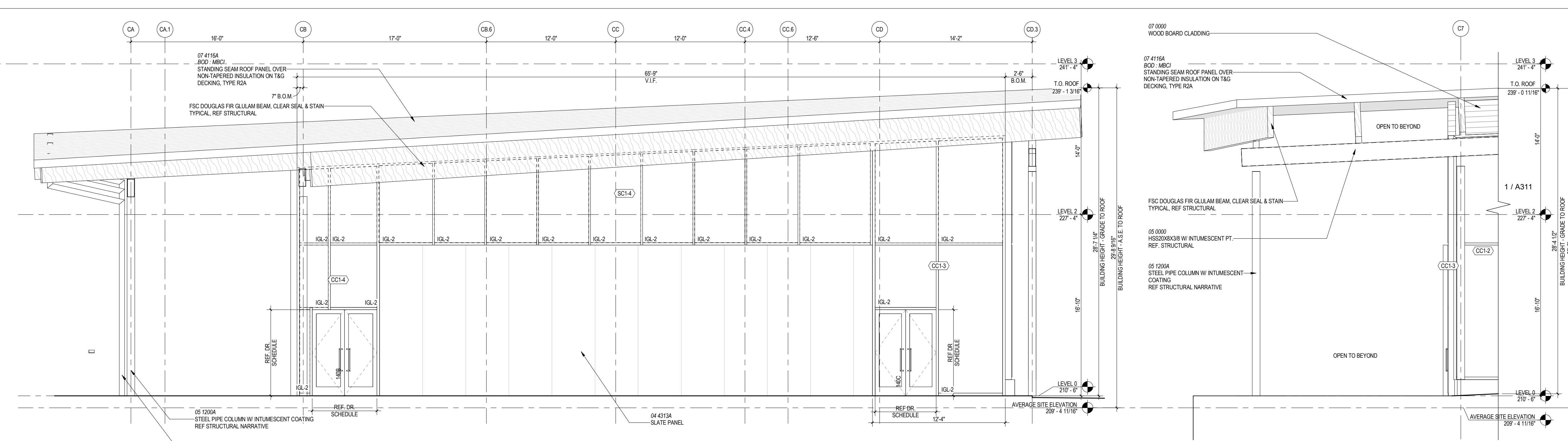
DRAWING NOT FOR CONSTRUCTION

ISSUES AND REVISIONS

NO.	SUBMITTAL	DATE
1	USE PERMIT RESUBMISSION	03.06.2017

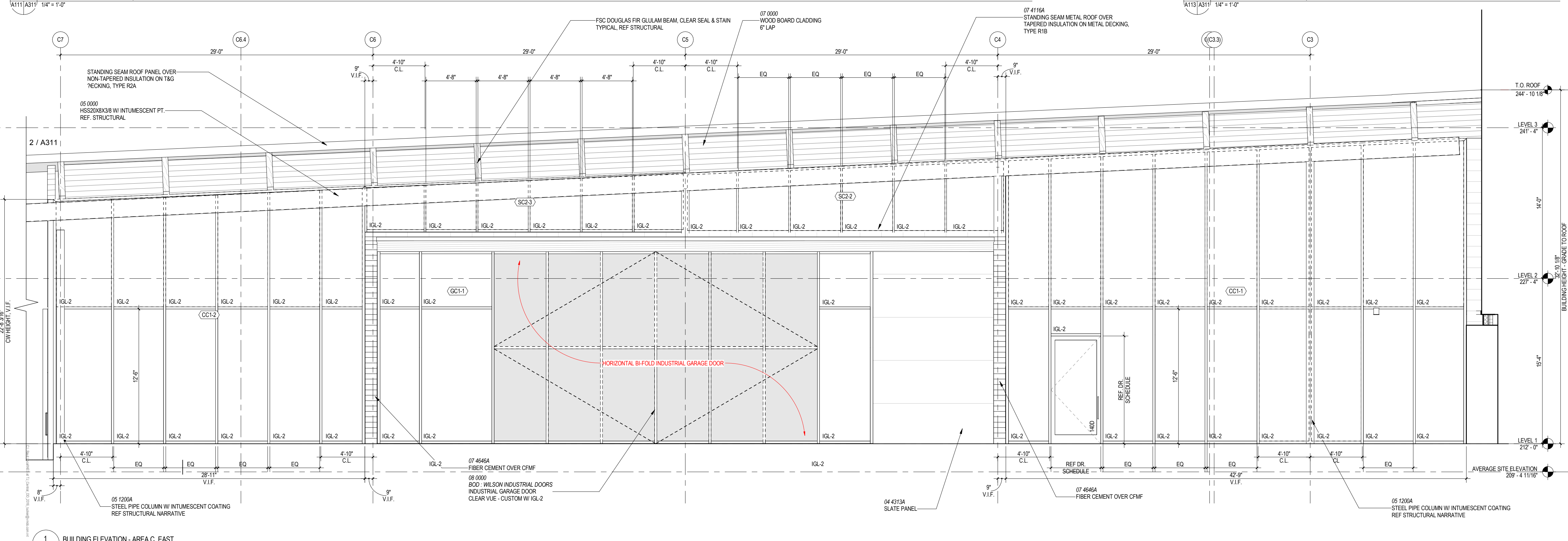
ENLARGED BUILDING ELEVATIONS - AREA C

A311



3 BUILDING ELEVATION - AREA C, SOUTH
A111/A311 1/4" = 1'-0"

2 BUILDING ELEVATION - AREA C, EAST CONT.
A113/A311 1/4" = 1'-0"



1 BUILDING ELEVATION - AREA C, EAST
A112/A311 1/4" = 1'-0"

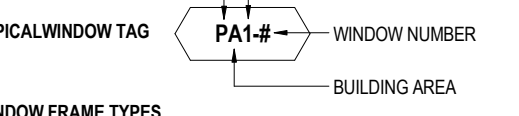
ELEVATION / BUILDING SECTION GENERAL NOTES

- ON SYMMETRICAL DRAWINGS, ALL NOTES AND DIMENSIONS SHOWN ON ONE-HALF OF DRAWING SHALL APPLY TO BOTH HALVES OF DRAWINGS.
- PROVIDE HIGH PERFORMANCE COATINGS AT ALL EXTERIOR FERROUS METALS (STRUCTURAL AND DECORATIVE).
- INTERIOR VIEWS IN BUILDING SECTIONS ARE TYPICALLY SIMPLIFIED FOR CLARITY. REFER TO LARGER SCALED INTERIOR ELEVATIONS FOR ADDITIONAL INFORMATION.
- FOOTINGS AND FOUNDATIONS ARE SHOWN FOR ILLUSTRATION ONLY. REFER TO STRUCTURAL DRAWINGS FOR EXTENT OF WORK.
- ALL DOWNSPOUTS ARE TO BE 6" TYPICAL, U.N.O.
- REFERENCE MEP & CIVIL DRAWINGS FOR FULL SCOPE OF M.E.P. AND CIVIL WORK.
- EXTERIOR SUNSHADES ARE DISPLAYED W/ DASHED LINES @ WINDOWS.
- WOOD BOARD BLOOMING TO INFILL OVER BEAMS AT GYM TO BE WESTERN RED CEDAR, ALTERNATE DOUGLAS FIR.

STOREFRONT & CURTAINWALL GENERAL NOTES

- VERIFY ALL DIMENSIONS IN FIELD PRIOR TO FABRICATION.
- SEE SPECIFICATIONS FOR GLASS TYPES.
- DIMS SHOWN ARE NOMINAL AND/OR ROUGH OPENINGS. CONTRACTOR TO ACCOUNT FOR JOINTS, SHIMS, SEALANT, ETC.
- CONTRACTOR RESPONSIBLE TO COORDINATE ALL ALUMINUM FRAMES WITH ALL RELEVANT DETAILS DEPICTED THROUGHOUT DRAWINGS.
- COORDINATE ALL ALUMINUM FRAMES WITH SPECIFICATION REQUIREMENTS, INCLUDING BUT NOT LIMITED TO PROVIDING ENGINEERING TO VERIFY WIND LOADING CRITERIA IS MET IN ALL CASES. SEE STRUCTURAL DRAWINGS.
- ALUMINUM FRAME DRAWINGS REPRESENT DESIGN INTENT. SHOP DRAWINGS ARE REQUIRED PRIOR TO FABRICATION.
- NO FRAMES SHALL BE DELIVERED OR INSTALLED PRIOR TO APPROVED SUBMITTALS WHICH INCLUDE ENGINEERING DATA AND SHOP DRAWINGS BASED ON MEASUREMENTS VERIFIED IN FIELD.
- SOME FRAME TYPES ARE REPEATED AS SIMILAR OR OPPOSITE HAND. SEE ELEVATIONS FOR QUANTITIES, LOCATIONS, AND INSTALLATION.
- COORDINATE ALL HARDWARE WITH DOOR SCHEDULE AND SPECIFICATIONS.
- SEE DOOR SCHEDULE FOR TYPICAL DOOR TYPES, WHICH INCLUDE ALUMINUM DOORS INSTALLED IN ALUMINUM FRAMES.
- SEE DOOR SCHEDULE FOR TYPES AND DETAILS OF DOORS IN ALUMINUM STOREFRONT FRAMES.
- FRAME TYPES, AS DEPICTED, REFLECT THE EXTERIOR CONDITION OF THE FRAME.
- PROVIDE MANUALLY OPERATED ROLLER SHADES AT LOCATIONS INDICATED. SHADES COVER FULL HEIGHT OF GLAZING, U.N.O.
- U.N.O. FILL SHIM SPACE AT SFC W/ R.O. WITH L.D.F.
- ALIGN JOINTS IN SHADE FABRIC WITH MAJOR VERTICAL MILLIONS, TYP.
- ROLLER SHADES SHALL COVER OPERABLE SASH WITHOUT INTERRUPTION. PROVIDE INDIVIDUAL DOOR MOUNTED ROLLER SHADES AT DOOR GLAZING.
- ROLLER SHADES NOT REQUIRED BEHIND SPANDREL GLASS OR AT INSULATED METAL PANELS U.N.O.

FRAME TYPE



WINDOW FRAME TYPES

TAG	DESCRIPTION	SPEC#	BOD
P	VINYL	XX-XXXX	INTUS
S	STOREFRONT	XX-XXXX	KAWNEER TRIFAB 451 UT
C	CURTAINWALL	XX-XXXX	KAWNEER 1000 UT

GLAZING TYPES

IGL-1	CLEAR VISION, EXTERIOR INSULATED, REF. SPEC.
IGL-2	CLEAR VISION, EXTERIOR INSULATED & LAMINATED, REF. SPEC.
IGL-3	SPANDREL, EXTERIOR INSULATED, REF. SPEC.
IGL-4	FRITTED, EXTERIOR INSULATED, REF. SPEC.
IGL-5	CLEAR, INTERIOR INSULATED & LAMINATED, REF. SPEC.
IGL-6	CLEAR, FIRE RATED & LAMINATED, REF. SPEC.
IGL-7	FROSTED, EXTERIOR INSULATED & LAMINATED, REF. SPEC.
GL-1	CLEAR, INTERIOR LAMINATED, REF. SPEC.
GL-2	CLEAR, INTERIOR MONOLITHIC, REF. SPEC.

GLAZING NOTES

- ALL GLAZING ON THE PROJECT IS TO BE TEMPERED.
- ALL SPANDREL GLAZING SHOWN IS SHADED.
- ALL EXTERIOR GLAZING IS GL-1, U.N.O.
- ALL INTERIOR GLAZING IS GL-1, U.N.O.

FINISH KEY

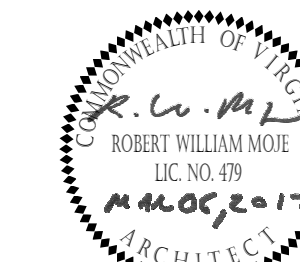
	MODULAR BRICK FINISH, REF WALL TYPES
	FIBER CEMENT FINISH, REF WALL TYPES
	TERRACOTTA FINISH, REF WALL TYPES
	GROUNDFACE CMU
	4' WIDE SLATE PANELS, REF WALL TYPES



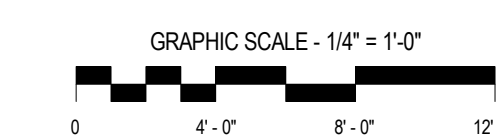
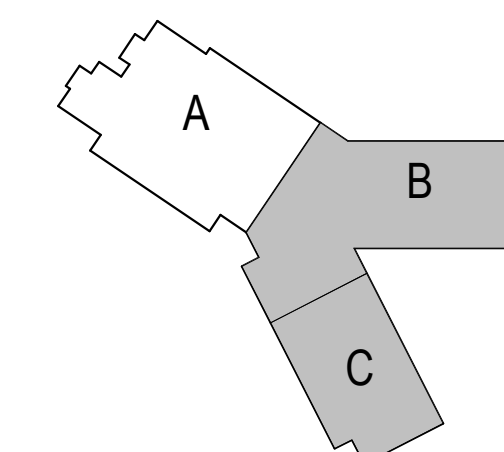
ARLINGTON PUBLIC SCHOOLS
NEW ELEMENTARY SCHOOL #2
AT THE SITE OF THOMAS JEFFERSON MIDDLE SCHOOL

125 South Old Glebe Rd
Arlington, VA 22204

Client Project Number 60FY16
VMDO Project Number 1152



Checked By **PMD**
Drawn By **DEM**

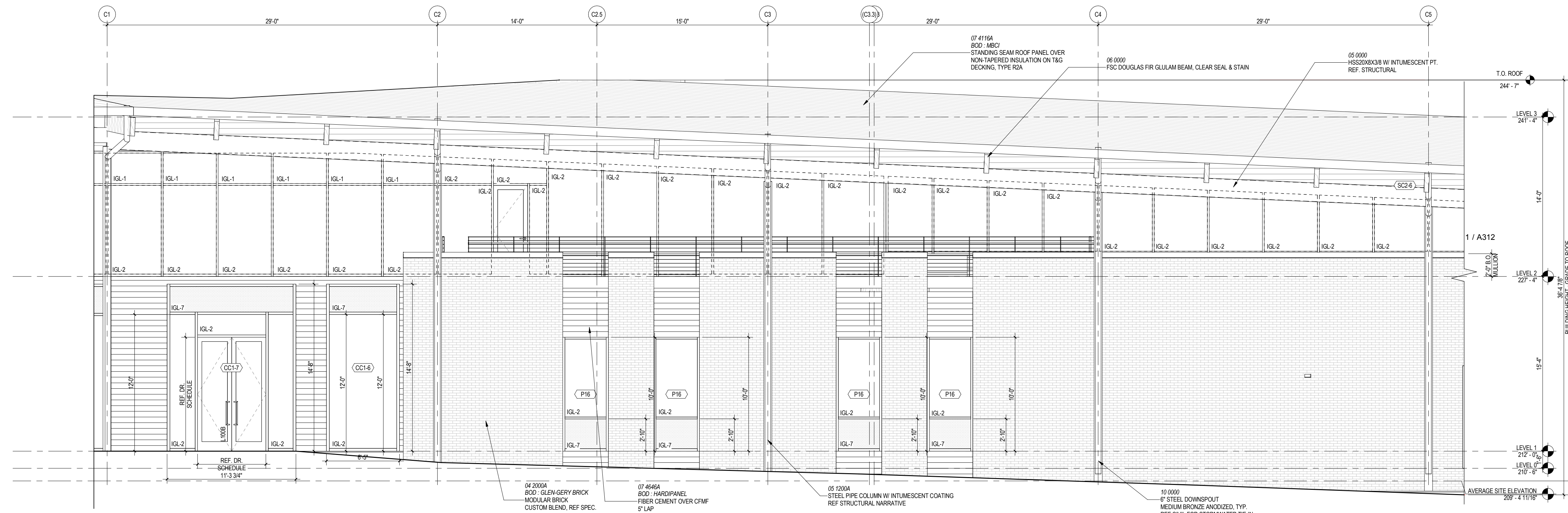


DRAWING NOT FOR CONSTRUCTION

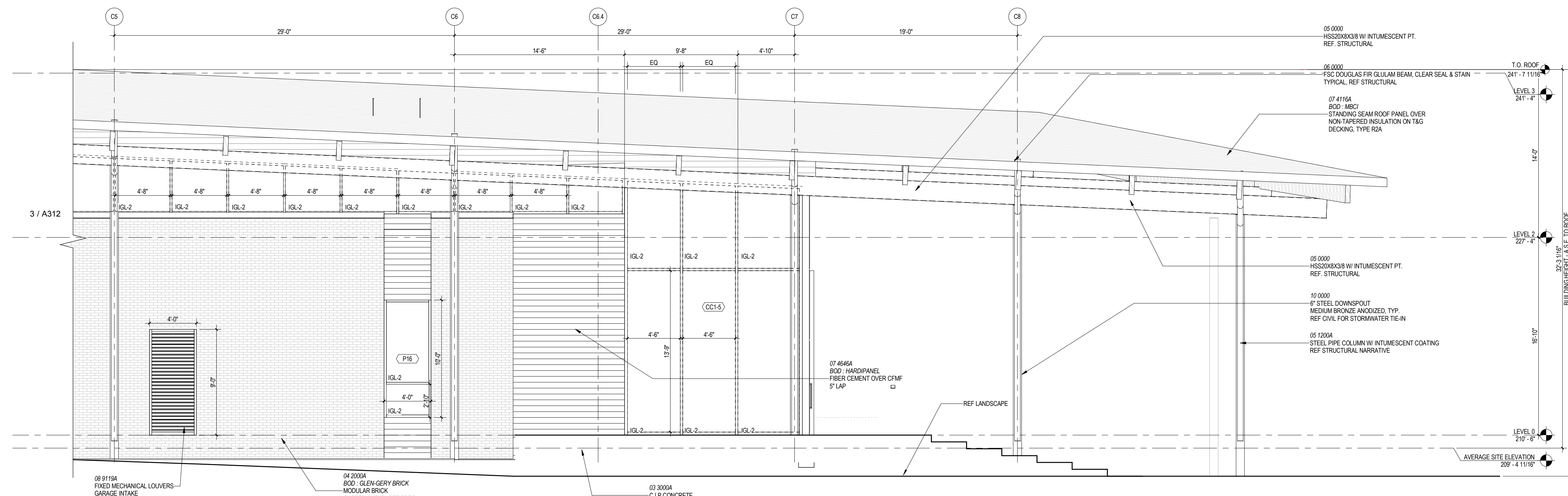
ISSUES AND REVISIONS
NO. SUBMITTAL DATE
USE PERMIT RESUBMISSION 03.06.2017

ENLARGED BUILDING ELEVATIONS - AREA C

A312



3 BUILDING ELEVATION - AREA C, WEST
A111 A312 1/4" = 1'-0"



1 BUILDING ELEVATION - AREA C, WEST CONT.
A113 A312 1/4" = 1'-0"

ELEVATION / BUILDING SECTION GENERAL NOTES

- ON SYMMETRICAL DRAWINGS, ALL NOTES AND DIMENSIONS SHOWN ON ONE-HALF OF DRAWING SHALL APPLY TO BOTH HALVES OF DRAWINGS.
- PROVIDE HIGH PERFORMANCE COATINGS AT ALL EXTERIOR FERROUS METALS (STRUCTURAL AND DECORATIVE).
- INTERIOR VIEWS IN BUILDING SECTIONS ARE TYPICALLY SIMPLIFIED FOR CLARITY. REFER TO LARGER SCALED INTERIOR ELEVATIONS FOR ADDITIONAL INFORMATION.
- FOOTINGS AND FOUNDATIONS ARE SHOWN FOR ILLUSTRATION ONLY. REFER TO STRUCTURAL DRAWINGS FOR EXTENT OF WORK.
- SOME FRAME TYPES ARE REPEATED AS SIMILAR OR OPPOSITE HAND. SEE ELEVATIONS FOR QUANTITIES, LOCATIONS, AND INSTALLATION.
- REFERENCE MEP & CIVIL DRAWINGS FOR FULL SCOPE OF M.E.P. AND CIVIL WORK.
- EXTERIOR SUNSHADES ARE DISPLAYED WITH DASHED LINES @ WINDOWS. WOOD BOARD BLOCKING TO HANG OVER BEAMS AT GYM TO BE WESTERN RED CEDAR. ALTERNATE DOUGLAS FIR.

STOREFRONT & CURTAINWALL GENERAL NOTES

- VERIFY ALL DIMENSIONS IN FIELD PRIOR TO FABRICATION.
- SEE SPECIFICATIONS FOR GLASS TYPES.
- DIMS SHOWN ARE NOMINAL AND/OR ROUGH OPENINGS. CONTRACTOR TO ACCOUNT FOR JOINTS, SHIMS, SEALANT, ETC.
- CONTRACTOR RESPONSIBLE TO COORDINATE ALL ALUMINUM FRAMES WITH ALL RELEVANT DETAILS DEPICTED THROUGHOUT DRAWINGS.
- COORDINATE ALL ALUMINUM FRAMES WITH SPECIFICATION REQUIREMENTS, INCLUDING BUT NOT LIMITED TO PROVIDING ENGINEERING TO VERIFY WIND LOADING CRITERIA IS MET IN ALL CASES. SEE STRUCTURAL DRAWINGS.
- ALUMINUM FRAME DRAWINGS REPRESENT DESIGN INTENT. SHOP DRAWINGS ARE REQUIRED PRIOR TO FABRICATION.
- NO FRAMES SHALL BE DELIVERED OR INSTALLED PRIOR TO APPROVED SUBMITTALS WHICH INCLUDE ENGINEERING DATA AND SHOP DRAWINGS BASED ON MEASUREMENTS VERIFIED IN FIELD.
- SOME FRAME TYPES ARE REPEATED AS SIMILAR OR OPPOSITE HAND. SEE ELEVATIONS FOR QUANTITIES, LOCATIONS, AND INSTALLATION.
- COORDINATE ALL HARDWARE WITH DOOR SCHEDULE AND SPECIFICATIONS.
- SEE DOOR SCHEDULE FOR TYPICAL DOOR TYPES, WHICH INCLUDE ALUMINUM DOORS INSTALLED IN ALUMINUM FRAMES.
- SEE DOOR SCHEDULE FOR TYPES AND DETAILS OF DOORS IN ALUMINUM STOREFRONT FRAMES.
- FRAME TYPES, AS DEPICTED, REFLECT THE EXTERIOR CONDITION OF THE FRAME.
- PROVIDE MANUALLY-OPERATED ROLLER SHADES AT LOCATIONS INDICATED. SHADES COVER FULL HEIGHT OF GLAZING, U.N.O.
- U.N.O. FULL SHIM SPACE AT SFOW & R.O. WITH L.D.F.
- ALUM. JANTS IN SHADE FABRIC WITH HANGER VERTICAL MILLIONS, TYP.
- ROLLER SHADES SHALL COVER OPERABLE SASH WITHOUT INTERRUPTION. PROVIDE INDIVIDUAL DOOR-MOUNTED ROLLER SHADES AT DOOR GLAZING.
- ROLLER SHADES NOT REQUIRED BEHIND SPANDREL GLASS OR AT INSULATED METAL PANELS U.N.O.

FRAME TYPE	LEVEL	TYPICAL WINDOW TAG	WINDOW NUMBER	BUILDING AREA
PA1-S				

WINDOW FRAME TYPES	TAG	DESCRIPTION	SPECIF	BOD
P	VNYL	XX-XXXX	INTUS	
S	STOREFRONT	XX-XXXX	KAWNEER TRIFAB 451 UT	
C	CURTAINWALL	XX-XXXX	KAWNEER 1600 UT	

GLAZING TYPES	DESCRIPTION
IQL-1	CLEAR VISION EXTERIOR INSULATED, REF SPEC.
IQL-2	CLEAR VISION EXTERIOR INSULATED & LAMINATED, REF SPEC.
IQL-3	SPANDREL EXTERIOR INSULATED, REF SPEC.
IQL-4	FRITTED, EXTERIOR INSULATED, REF SPEC.
IQL-5	CLEAR, INTERIOR INSULATED & LAMINATED, REF SPEC.
IQL-6	CLEAR, FIRE RATED & LAMINATED, REF SPEC.
IQL-7	FROSTED, EXTERIOR INSULATED & LAMINATED, REF SPEC.
GL-1	CLEAR, INTERIOR LAMINATED, REF SPEC.
GL-2	CLEAR, INTERIOR MONOLITHIC, REF SPEC.

- GLAZING NOTES**
- ALL GLAZING ON THE PROJECT IS TO BE TEMPERED.
 - ALL SPANDREL GLAZING SHOWN IS SHADED.
 - ALL EXTERIOR GLAZING IS IQL-1, U.N.O.
 - ALL INTERIOR GLAZING IS GL-1, U.N.O.

FINISH KEY

- MODULAR BRICK FINISH, REF WALL TYPES
- FIBER CEMENT FINISH, REF WALL TYPES
- TERRACOTTA FINISH, REF WALL TYPES
- GROUNDFACE CMU
- 4" WIDE SLATE PANELS, REF WALL TYPES

A:\Projects\1152\1152-A312\1152-A312.dwg
 03/06/2017 10:00 AM
 R:\Users\dem\OneDrive\Documents\1152\1152-A312\1152-A312.dwg
 03/06/2017 10:00 AM
 R:\Users\dem\OneDrive\Documents\1152\1152-A312\1152-A312.dwg
 03/06/2017 10:00 AM