An aerial photograph of a residential area with various colored overlays. A road runs diagonally from the top left towards the bottom center. To the left of the road, there are several large, light blue rectangular shapes, possibly representing building footprints or lots. To the right of the road, there are green areas, some with circular patterns, and a large blue area that looks like a pond or a large lawn. The text "NES @ TJ" is overlaid in the center of the image.

NES @ TJ



Zoning Code Update

3. Modify setbacks in §3.2.3.A and the density and dimensional standards in §4.2.3 above for all buildings and accessory buildings, provided it finds that:
 - (a) The scale and massing of the school development project are compatible with existing and planned development abutting and across the street from the school development project;
 - (b) The school development project incorporates a design that facilitates utilization of the range of transportation options available in the vicinity of the school development project;
 - (c) The school development project balances opportunities for providing open space and recreational amenities within the school development project in a manner appropriate for the size and location of the development project; and
 - (d) The school development project emphasizes energy conservation and environmental sustainability through architectural design, materials, construction methods, and site design.



Use Permit Process

- APS Use Permit
- County staff Review Use Permit
- APS re-submittal Submit Revised Plans
- County staff Final Review
- Public Hearing Process
 - Commissions
 - County Board

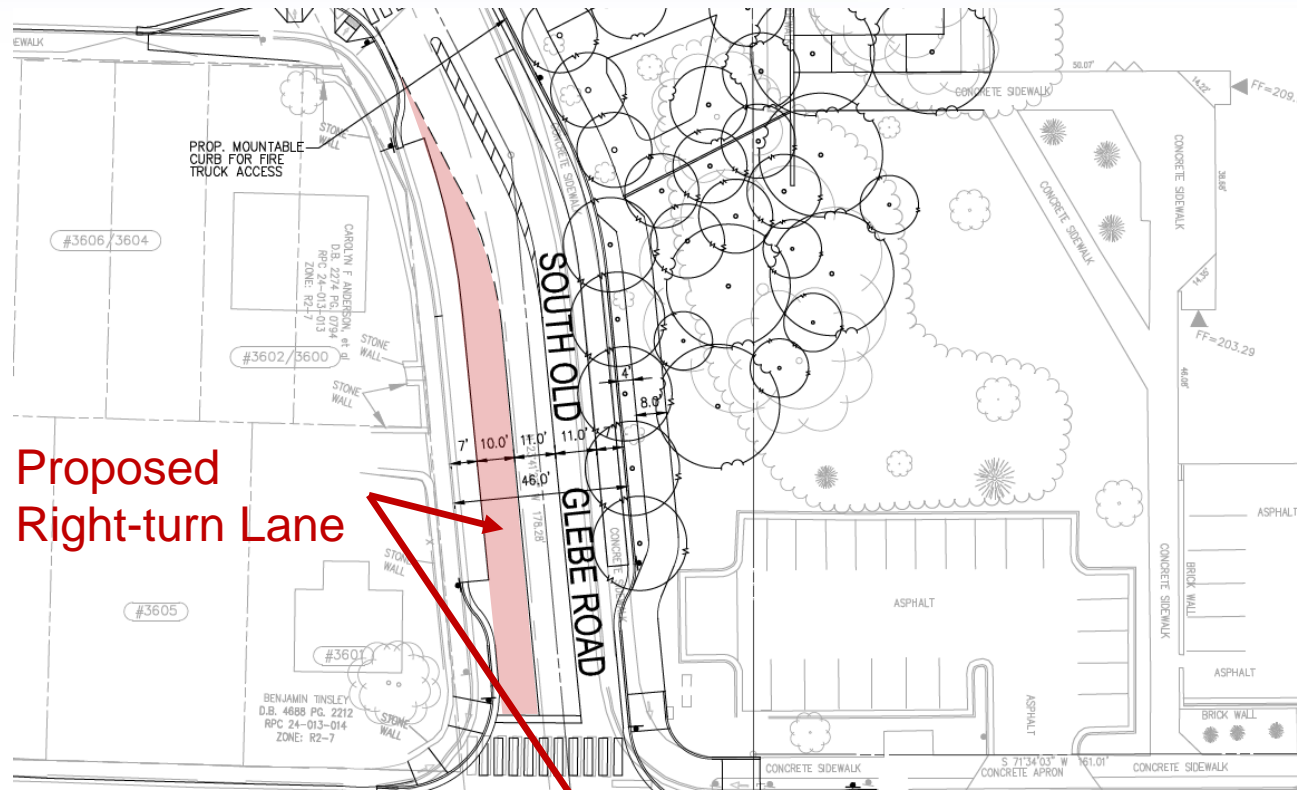


Use Permit Conditions

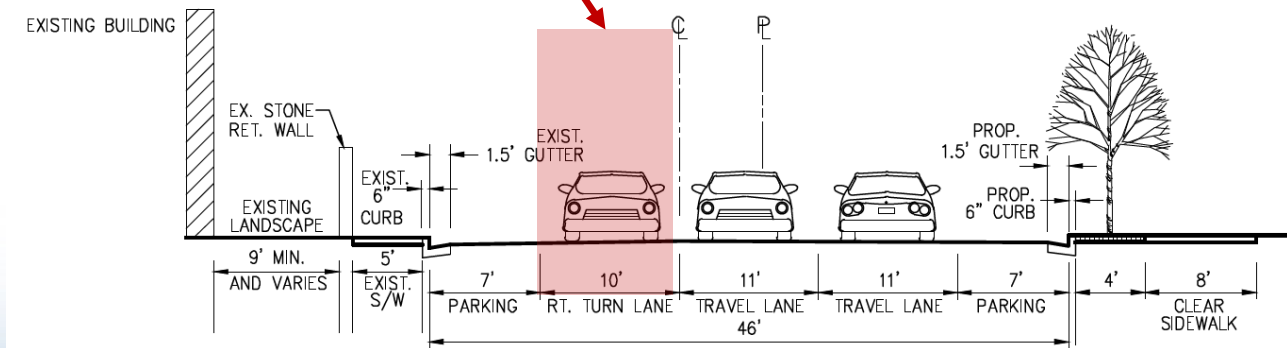
- Standard Use Permit Conditions for Schools
- Consistent across Wilson, Stratford, and NES @ TJ
- Legal document adopted with plans

Off-Site Transportation Items

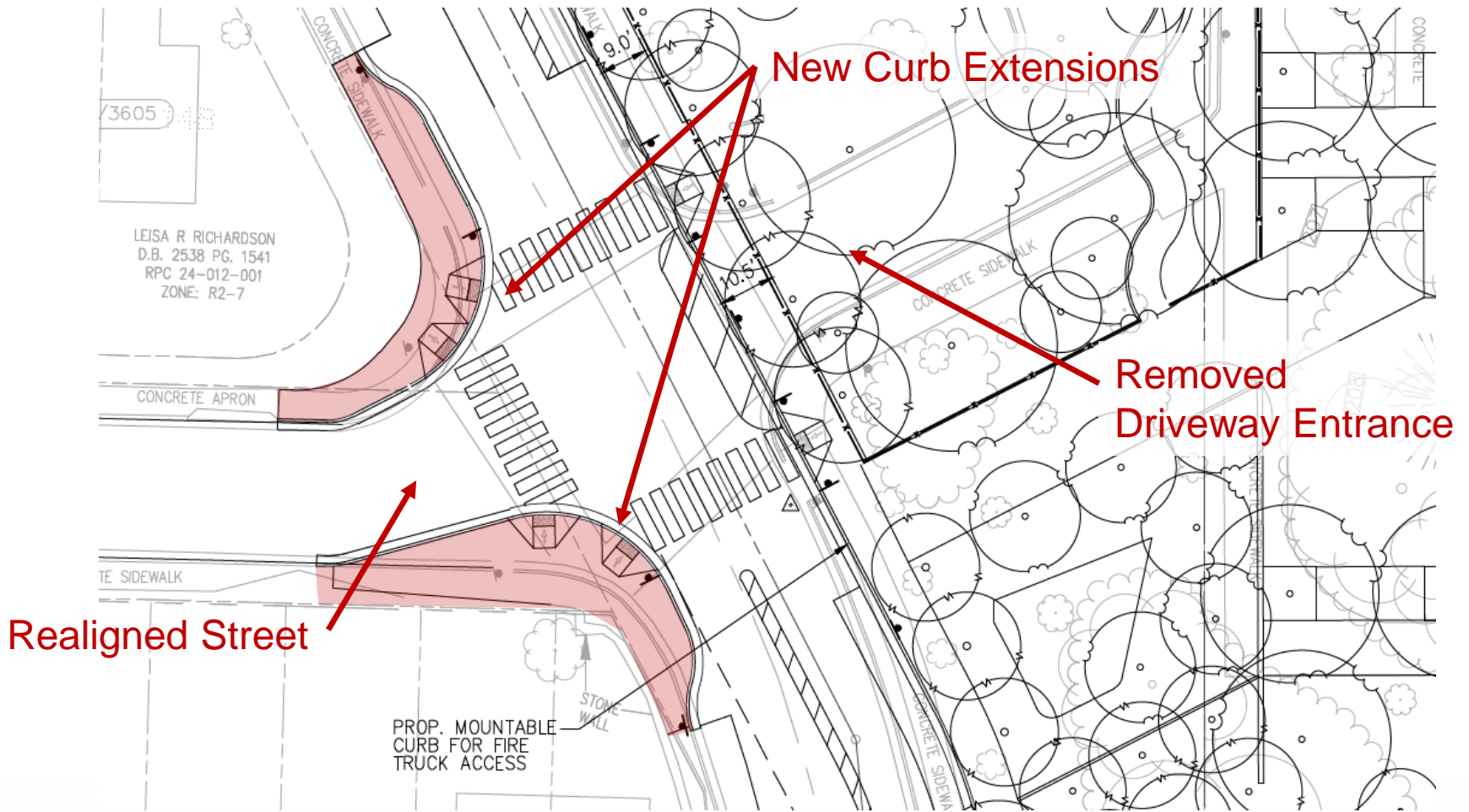
New Southbound Right-Turn Proposed



Proposed Right-turn Lane



Reconstruct Intersection of 1st and South Old Glebe



Additional On-Site Improvements

- New sidewalk along entire site frontage.
- Removing curb cuts along South Old Glebe Road
- Adding Street trees along South Old Glebe Road
- Widening South Old Glebe Road to support either on-street parking or student drop-off and pick up.

Off-Site Changes

- Lengthening Right-turn lane at Glebe Road
- Adding “Your Speed Is” Signs along 2nd Street South
- Painting a longer center line on South Fenwick Street