

**VMDO**

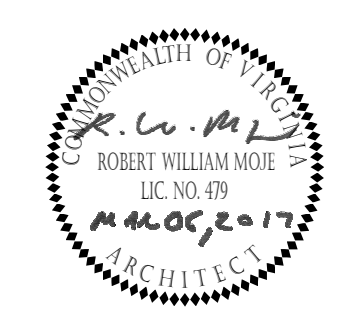
VMDO Architects  
200 E Market Street  
Charlottesville, VA 22902  
434.296.5684  
vmdo.com



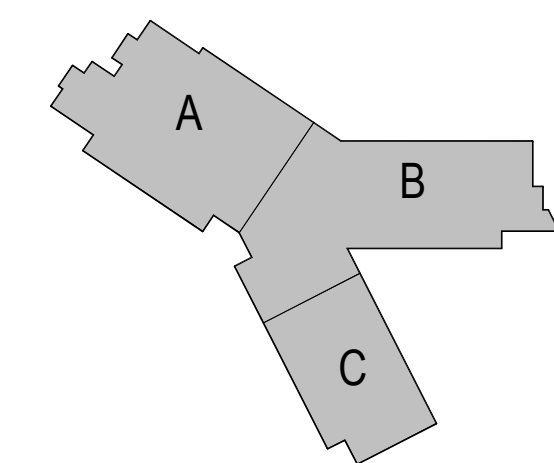
ARLINGTON PUBLIC SCHOOLS  
NEW ELEMENTARY SCHOOL #2  
AT THE SITE OF THOMAS JEFFERSON MIDDLE SCHOOL

125 South Old Glebe Rd  
Arlington, VA 22204

Client Project Number 60FY16  
VMDO Project Number 1152



Checked By PMD  
Drawn By DEM



PROJECT NORTH (18.53 DEGREES OFF TRUE)  
TRUE NORTH

GRAPHIC SCALE - 1/16" = 1'-0"  
0 16'-0" 32'-0" 48'-0"

**DRAWING NOT FOR CONSTRUCTION**

ISSUES AND REVISIONS	
NO.	DATE
1	11.30.2016
2	03.06.2017

KEY PLAN - LEVEL 4

**A140**

1 LEVEL 4 KEY PLAN  
A140 1/16" = 1'-0"

11/16/16 11:58 AM 11/16/16 11:58 AM 11/16/16 11:58 AM

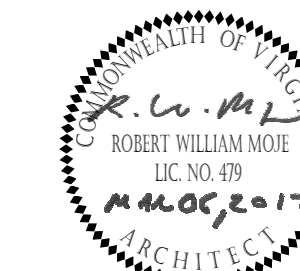




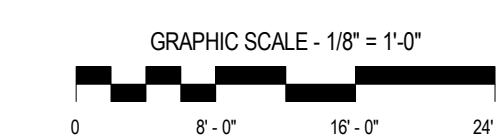
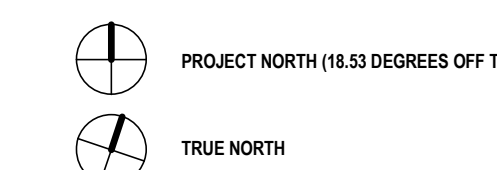
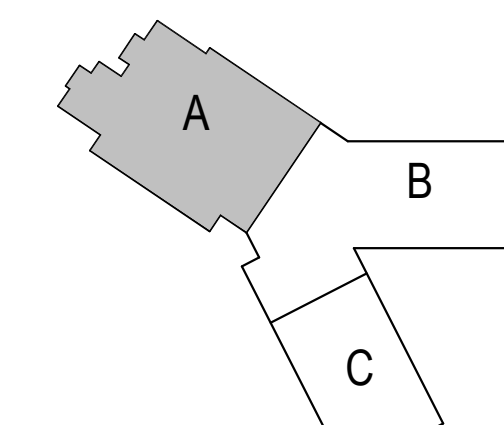
ARLINGTON PUBLIC SCHOOLS  
NEW ELEMENTARY SCHOOL #2  
AT THE SITE OF THOMAS JEFFERSON MIDDLE SCHOOL

125 South Old Glebe Rd  
Arlington, VA 22204

Client Project Number 60FY16  
VMDO Project Number 1152



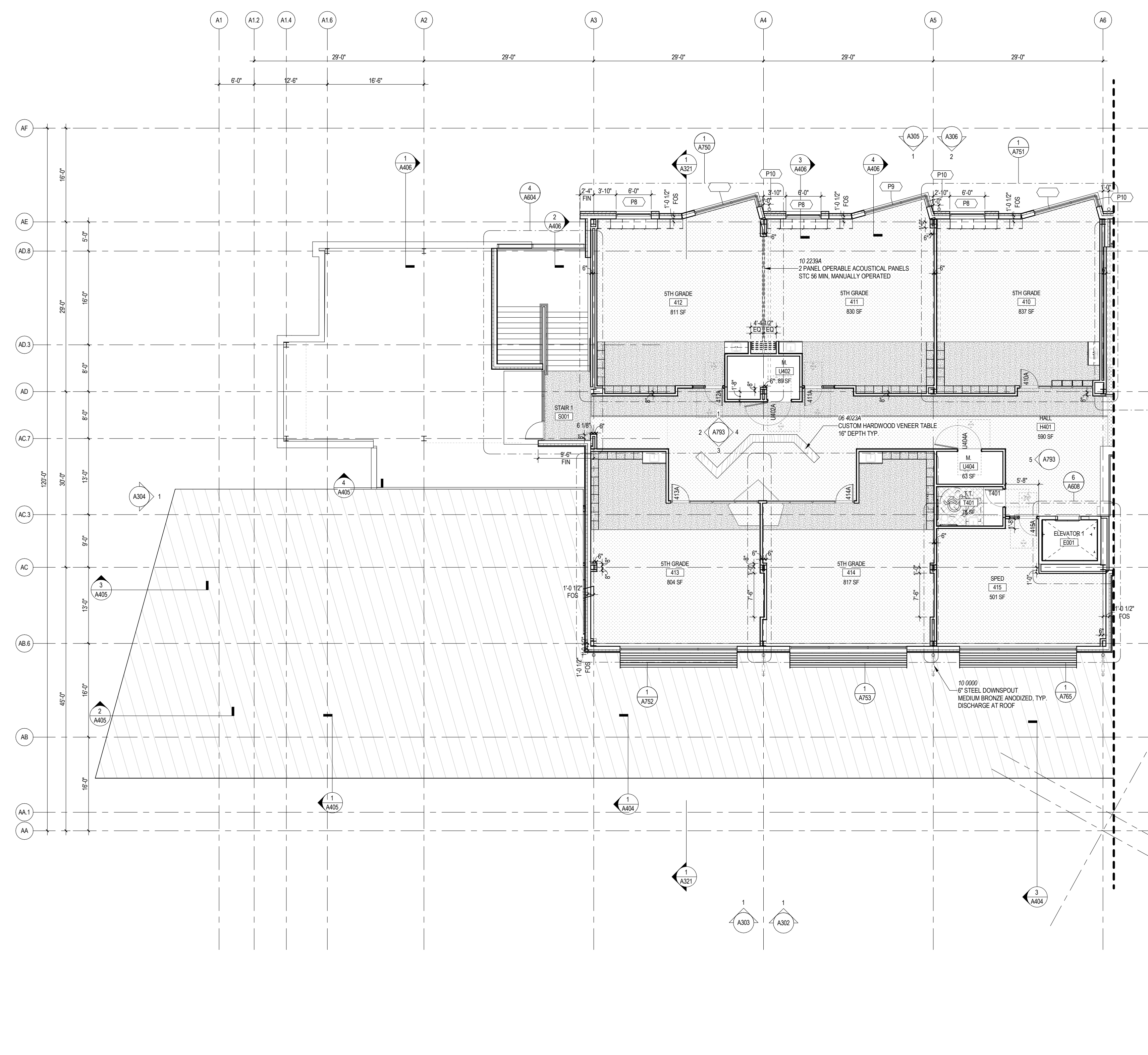
Checked By PMD  
Drawn By DEM



**DRAWING NOT FOR CONSTRUCTION**

ISSUES AND REVISIONS

NO.	SUBMITTAL	DATE
1	USE PERMIT SUBMISSION	11.30.2016
2	USE PERMIT RESUBMISSION	03.06.2017



1 LEVEL 4, AREA A  
A100/A141 1/8" = 1'-0"

**FLOOR PLAN GENERAL NOTES**

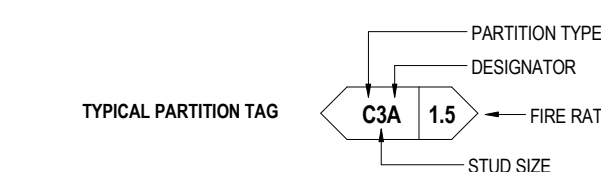
- SEE LANDSCAPE DRAWINGS FOR HARDSCAPE ELEMENTS, PAVING AND SITE WALL ADJACENT TO THE BUILDING.
- IF INDICATED IN SPECIFICATIONS PROVIDE BULKHEAD CALL AT ALL INTERIOR EXPOSED OUTSIDE CORNERS UNLESS OTHERWISE NOTED.
- LOCATE ROUGH OPENINGS FOR DOORS FROM INSIDE FACE OF INTERSECTING WALL UNLESS OTHERWISE NOTED.
- REFER TO LIFE SAFETY PLANS FOR ADDITIONAL RATED CONSTRUCTION INFORMATION.
- ALL DIMENSIONS ARE TO FINISH FACE OF WALL, MASONRY OPENING, AND OUTSIDE EDGE OF DOOR FRAME (NOMINAL) UNLESS OTHERWISE NOTED.
- PROVIDE ACCESS PANELS TO DOORS IN PARTITIONS AT ALL LOCATIONS REQUIRING ACCESS. PANELS SHALL MAINTAIN FIRE RATING.
- PROVIDE WOOD BLOCKING OR 18 GAUGE METAL STRAPPING BEHIND G.W.B. WHERE REQUIRED TO SUPPORT FIXTURES OR EQUIPMENT PROVIDED IN THE CONTRACT OR BY OTHERS.
- WHERE METAL FRAMING REQUIRES SUPPORT AT COLUMNS & BEAMS, PROVIDE METAL STAND-OFFS PRIOR TO APPLYING FIREPROOFING.
- ALL M.E.P. AND I.T. SYSTEMS ARE TO BE CONCEALED WITHIN WALL OR CEILING CAVITY, UNLESS OTHERWISE NOTED.
- ALL INTERIOR PARTITIONS ARE TYPE "CMA" UNLESS OTHERWISE NOTED. SEE 1002 FOR PARTITION TYPES.
- SEE SHEET A202 FOR PARTITION TYPES.
- DIMENSIONS ARE TO FINISHED FACE OF PARTITION TYPE AS DEFINED ON SHEET A202. FINISH TYPES (TILE, WOOD PANELING, WAINSCOT, WALL COVERINGS, ETC.) ARE NOT INCLUDED.
- SEE ELEVATION SHEETS A200 FOR EXTERIOR FRAME TYPE TAGS. SEE A500 SERIES FOR FRAME TYPES.
- SEE INTERIOR ELEVATION SHEETS A700 FOR INTERIOR FRAME TYPE TAGS. SEE A300 SHEETS FOR FRAME TYPES.

**SUPPLEMENTAL:**

- SEE FOOD SERVICE DRAWINGS FOR ALL KITCHEN AND SERVERY WORK.
- IF A PARTITION HAS WITH A DOUBLE LAYER OF GYPSUM BOARD THE DOUBLE LAYER SHALL FACE TOWARDS THE CORRIDOR AT BATHROOMS THE DOUBLE LAYER SHALL FACE TOWARDS THE CLASSROOM.
- CENTER ALL DOORS ON WALL FACING HALLWAY @ ALL SMALL MECHANICAL ROOMS.
- PARTITIONS USED TO ENCLOSE COLUMNS SHALL BE "B2" UNLESS OTHERWISE NOTED.
- PARTITIONS ON O.L. ARE CENTERED ON O.L.
- FOS = EXTERIOR FACE OF STUD.
- BDM = BACK OF MULLION.
- REF DOOR SCHEDULE FOR HOLLOW METAL TYPES.

**FINISH KEY**

- CARPET
- HARDWOOD VENEER CUSTOM BUILT ELEMENT
- LINOLEUM
- LINOLEUM ACCENT (ALTERNATE - CORK)
- HARDWOOD VENEER OCCUPIABLE WALL ELEMENT, SIMILAR TO DISCOVERY'S HEDGE
- SEE FINISH SCHEDULE
- RECESSED ENTRY FLOOR MATS



**FRAMING DEPTH SCHEDULE**

TAG #	MTL STUD	MTL C/H STUD	WOOD STUD	MASONRY	STAGGERED STUD
0	NO FRAMING		1X2 FURRING	N/A	N/A
1	1 1/2"	N/A	N/A	N/A	N/A
2	2 1/2"	2X2	N/A	N/A	2 1/2", 3 5/8" TRACK
3	3 5/8"	N/A	N/A	N/A	N/A
4	4"	2X4	3 5/8"	N/A	N/A
6	6"	2X6	5 5/8"	3 5/8", 6" TRACK	N/A
8	8"	N/A	2X8	7 5/8"	N/A
10	10"	N/A	N/A	9 5/8"	N/A
12	N/A	N/A	N/A	11 5/8"	N/A

**FIRE RATING**

TAG	DESCRIPTION	DESIGNATOR	DESCRIPTION
-	NO DESIGNATED RATING	A	ACOUSTICAL BATT INSULATION
5	SMOKE PARTITION	B	RIGID INSULATION
30	30 MIN. RATED ASSEMBLY		
45	45 MIN. RATED ASSEMBLY		
60	60 MIN. RATED ASSEMBLY		
90	90 MIN. RATED ASSEMBLY		
2	2 HOUR RATED ASSEMBLY		

**FLOOR PLAN - LEVEL 4, AREA A**

**A141**

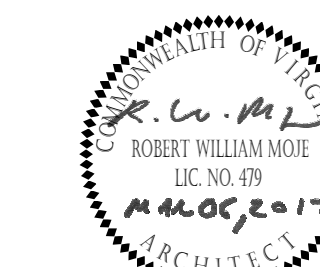




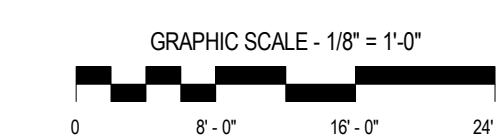
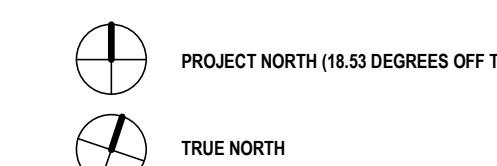
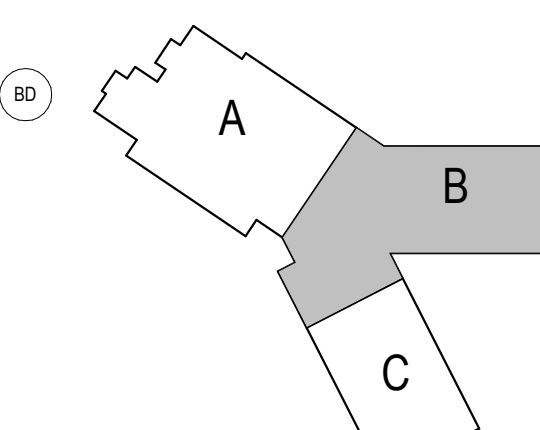
ARLINGTON PUBLIC SCHOOLS  
NEW ELEMENTARY SCHOOL #2  
AT THE SITE OF THOMAS JEFFERSON MIDDLE SCHOOL

125 South Old Glebe Rd  
Arlington, VA 22204

Client Project Number 60FY16  
VMDO Project Number 1152



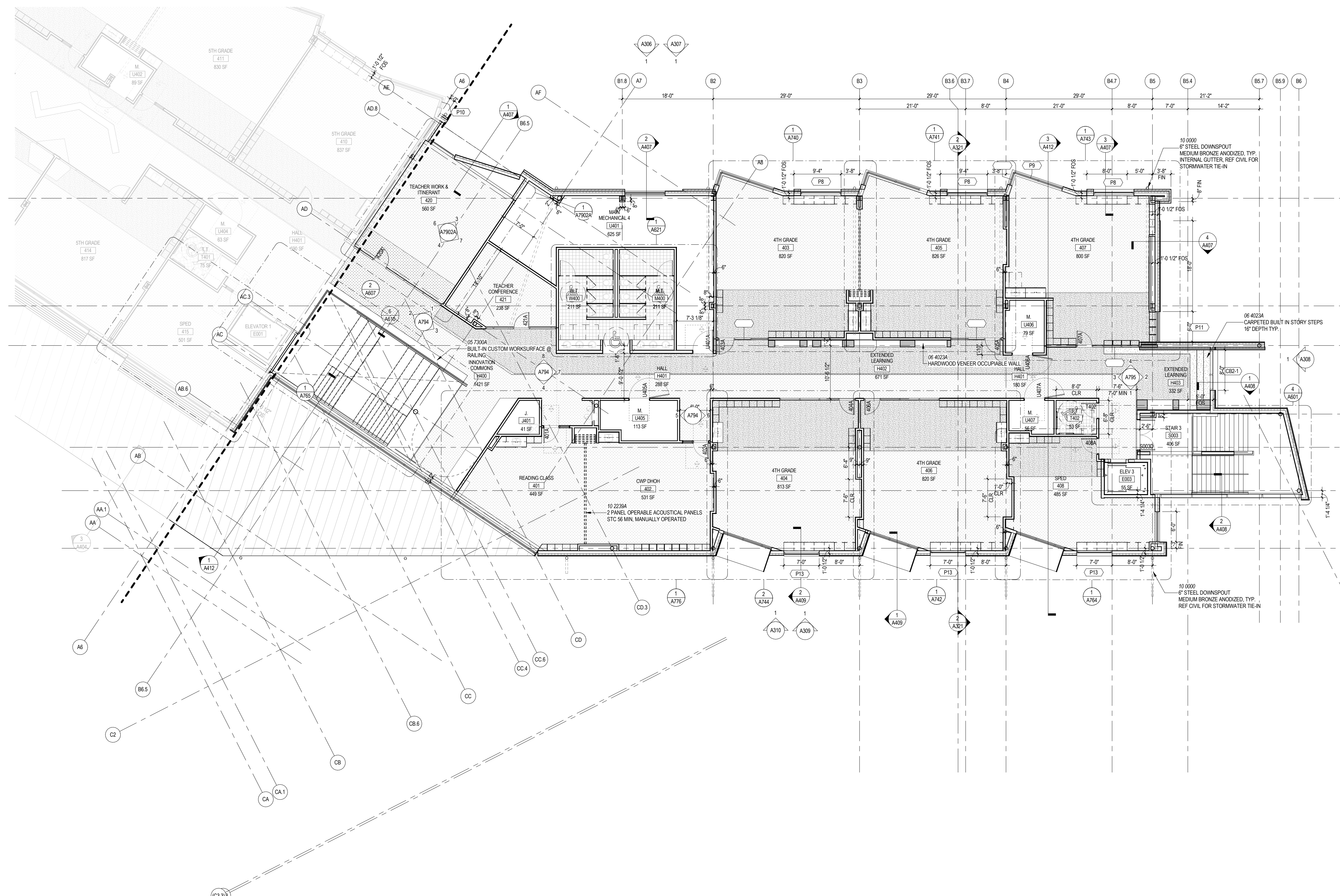
Checked By PMD  
Drawn By DEM



**DRAWING NOT FOR CONSTRUCTION**

ISSUES AND REVISIONS

NO.	SUBMITTAL	DATE
1	USE PERMIT SUBMISSION	11.30.2016
2	USE PERMIT RESUBMISSION	03.06.2017



**1 LEVEL 4, AREA B**  
A142 1/8" = 1'-0"

- FLOOR PLAN GENERAL NOTES**
- SEE LANDSCAPE DRAWINGS FOR HARDSCAPE ELEMENTS, PAVING AND SITE WALL ADJACENT TO THE BUILDING.
  - IF INDICATED IN SPECIFICATIONS PROVIDE BULLSEYE CURB AT ALL INTERIOR EXPOSED OUTSIDE CORNERS UNLESS OTHERWISE NOTED.
  - LOCATE ROUGH OPENINGS FOR DOORS 4" FROM INSIDE FACE OF INTERSECTING WALL UNLESS OTHERWISE NOTED.
  - REFER TO LIFE SAFETY PLANS FOR ADDITIONAL RATED CONSTRUCTION INFORMATION.
  - ALL DIMENSIONS ARE TO FINISH FACE OF WALL, MASONRY OPENING, AND OUTSIDE EDGE OF DOOR FRAME (NOMINAL), U.N.O.
  - PROVIDE ACCESS PANELS IN DOORS IN PARTITIONS AT ALL LOCATIONS REQUIRING ACCESS. PANELS SHALL MAINTAIN FIRE RATING.
  - PROVIDE WOOD BLOCKING OR 18 GAUGE METAL STRAPPING BEHIND G.W.B. WHERE REQUIRED TO SUPPORT FIXTURES OR EQUIPMENT PROVIDED IN THE CONTRACT OR BY OTHERS.
  - WHERE METAL FRAMING REQUIRES SUPPORT AT COLUMNS & BEAMS, PROVIDE METAL STAND-OFFS PRIOR TO APPLYING FIREPROOFING.
  - ALL M.E.P. AND I.T. SYSTEMS ARE TO BE CONCEALED WITHIN WALL OR CEILING CAVITY, U.N.O.
  - ALL INTERIOR PARTITIONS ARE TYPE "CMA" U.N.O. SEE 100 FOR PARTITION TYPES.
  - SEE SHEET A202 FOR PARTITION TYPES.
  - DIMENSIONS ARE TO FINISHED FACE OF PARTITION TYPE AS DEFINED ON SHEET A202. FINISH TYPES (TILE, WOOD PANELING, WAINSCOT, WALL COVERINGS, ETC.) ARE NOT INCLUDED.
  - SEE ELEVATION SHEETS A200 FOR INTERIOR FRAME TYPE TAGS. SEE A200 SERIES FOR FRAME TYPES.
  - SEE INTERIOR ELEVATION SHEETS A200 FOR INTERIOR FRAME TYPE TAGS. SEE A200 SHEETS FOR FRAME TYPES.
- SUPPLEMENTAL**
- SEE FOOD SERVICE DRAWINGS FOR ALL KITCHEN AND SERVERY WORK.
  - IF A PARTITION HAS WITH A DOUBLE LAYER OF GYPSUM BOARD THE DOUBLE LAYER SHALL FACE TOWARDS THE CORRIDOR AT BATHROOMS THE DOUBLE LAYER SHALL FACE TOWARDS THE CLASSROOM.
  - CENTER ALL DOORS ON WALL FACING HALLWAY @ ALL SMALL MECHANICAL ROOMS.
  - PARTITIONS USED TO ENCLOSE COLUMNS SHALL BE "B" U.N.O.
  - PARTITIONS ON GL ARE CENTERED ON GL.
  - FOS = EXTERIOR FACE OF STUD.
  - BOM = BACK OF MULLION.
  - REF DOOR SCHEDULE FOR HOLLOW METAL TYPES.

**FINISH KEY**

[Pattern]	CARPET
[Pattern]	HARDWOOD VENEER CUSTOM BUILT ELEMENT
[Pattern]	LINOLEUM
[Pattern]	LINOLEUM ACCENT (ALTERNATE - CORK)
[Pattern]	HARDWOOD VENEER OCCUPIABLE WALL ELEMENT, SIMILAR TO DISCOVERY'S HEDGE
[Pattern]	SEE FINISH SCHEDULE
[Pattern]	RECESSED ENTRY FLOOR MATS

**TYPICAL PARTITION TAG**

PARTITION TYPE DESIGNATOR: C3A, 1.5, FIRE RATING, STUD SIZE

**FRAMING DEPTH SCHEDULE**

TAG #	MTL STUD	MTL C.H. STUD	WOOD STUD	MASONRY	STAGGERED STUD
0	NO FRAMING				
1	7/8" FURRING	N/A	1X2 FURRING	N/A	N/A
2	1 1/2"	N/A	N/A	N/A	N/A
3	2 1/2"	2X2	N/A	N/A	2 1/2", 3 5/8" TRACK
4	3 5/8"	N/A	N/A	N/A	N/A
5	4"	2X4	3 5/8"	N/A	N/A
6	6"	2X6	5 5/8"	3 5/8" 6" TRACK	N/A
8	8"	N/A	2X8	7 5/8"	N/A
10	10"	N/A	N/A	9 5/8"	N/A
12	N/A	N/A	N/A	11 5/8"	N/A

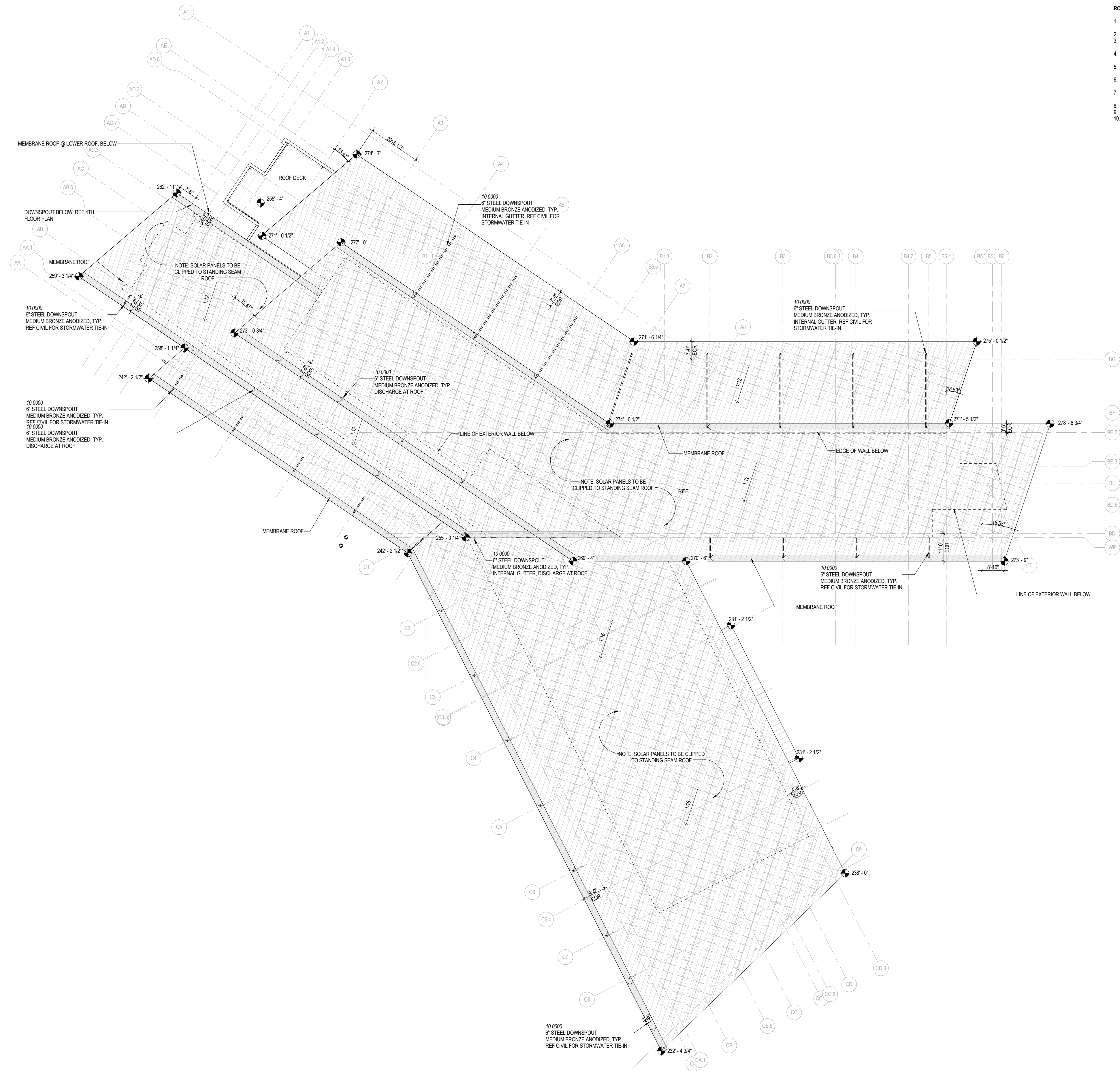
**FIRE RATING**

TAG	DESCRIPTION	DESIGNATOR	TAG	DESCRIPTION
-	NO DESIGNATED RATING		A	ACOUSTICAL BATT INSULATION
5	SMOKE PARTITION		B	RIGID INSULATION
30	30 MIN. RATED ASSEMBLY			
45	45 MIN. RATED ASSEMBLY			
1	60 MIN. RATED ASSEMBLY			
90	90 MIN. RATED ASSEMBLY			
2	2 HOUR RATED ASSEMBLY			

**FLOOR PLAN - LEVEL 4, AREA B**

**A142**





- ROOF PLAN GENERAL NOTES**
1. ALL TAPERED ROOFING INSULATION SHALL HAVE A MINIMUM DEPTH OF 6" AT DRAINS & SLOPE TO DRAIN AT 1/4" PER FOOT, TYPICAL.
  2. PROVIDE CRICKETS AT ALL OBSTRUCTIONS TO MAINTAIN POSITIVE DRAINAGE.
  3. ALL BLOCKING SHALL BE PRESSURE TREATED. PROVIDE FLEXIBLE FLASHING THAT IS COMPATIBLE WITH SPECIFIED ROOF MEMBRANE AS A SEPARATION FROM STEEL DECKING.
  4. COORDINATE ALL ROOF PENETRATIONS WITH MECH., PLUMB., ELEC. AND STRUCTURAL DRAWINGS. SEE M.E.P. DRAWINGS FOR ADDITIONAL ROOF PENETRATIONS NOT SHOWN.
  5. FLASH & SEAL ALL PENETRATIONS & CURBS PER ROOFING MANUFACTURER'S RECOMMENDED DETAILS AND APPLICABLE IRCA PLATES.
  6. PROVIDE CONTINUOUS FLASHING & COUNTER FLASHING AT ALL ROOF TO WALL CONDITIONS & PARAPET CONDITIONS.
  7. REFER TO ROOFING MANUFACTURER'S REQUIREMENTS FOR CAP SHEET FLASHING, BASE TIE-INS AND SEALANT BEADS.
  8. REFER TO APPLICABLE FACTORY MUTUAL LISTING FOR FASTENING METHODS AND SPACING.
  9. REFER TO TYPICAL ROOF ASSEMBLIES FOR TYPICAL ROOF TYPES.
  10. SLOPE ALL COPINGS TOWARD ROOF U.N.O.



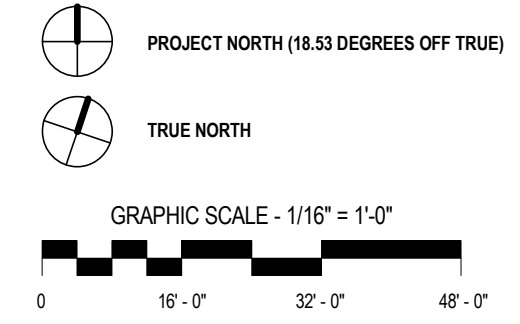
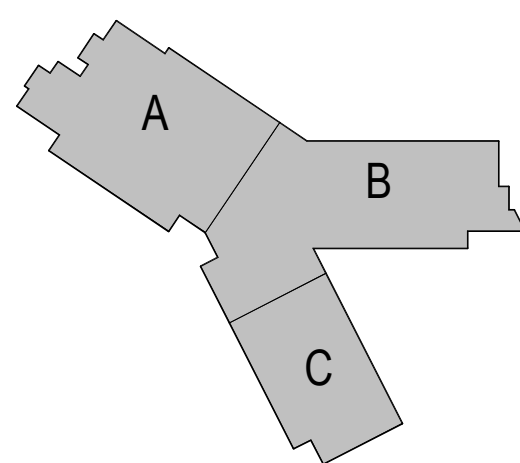
ARLINGTON PUBLIC SCHOOLS  
 NEW ELEMENTARY SCHOOL #2  
 AT THE SITE OF THOMAS JEFFERSON MIDDLE SCHOOL

125 South Old Glebe Rd  
 Arlington, VA 22204

Client Project Number 60FY16  
 VMDO Project Number 1152



Checked By PMD  
 Drawn By DEM



**DRAWING NOT FOR CONSTRUCTION**

ISSUES AND REVISIONS	
NO.	DATE
NO. SUBMITTAL	
USE PERMIT SUBMISSION	11.30.2016
USE PERMIT RESUBMISSION	03.06.2017

KEY PLAN - ROOF

**A150**