

BENJAMIN BANNEKER PARK PROJECT

Department of Parks and Recreation (DPR)

Project Managers: Jeanette Ankoma-Sey & Diane Probus

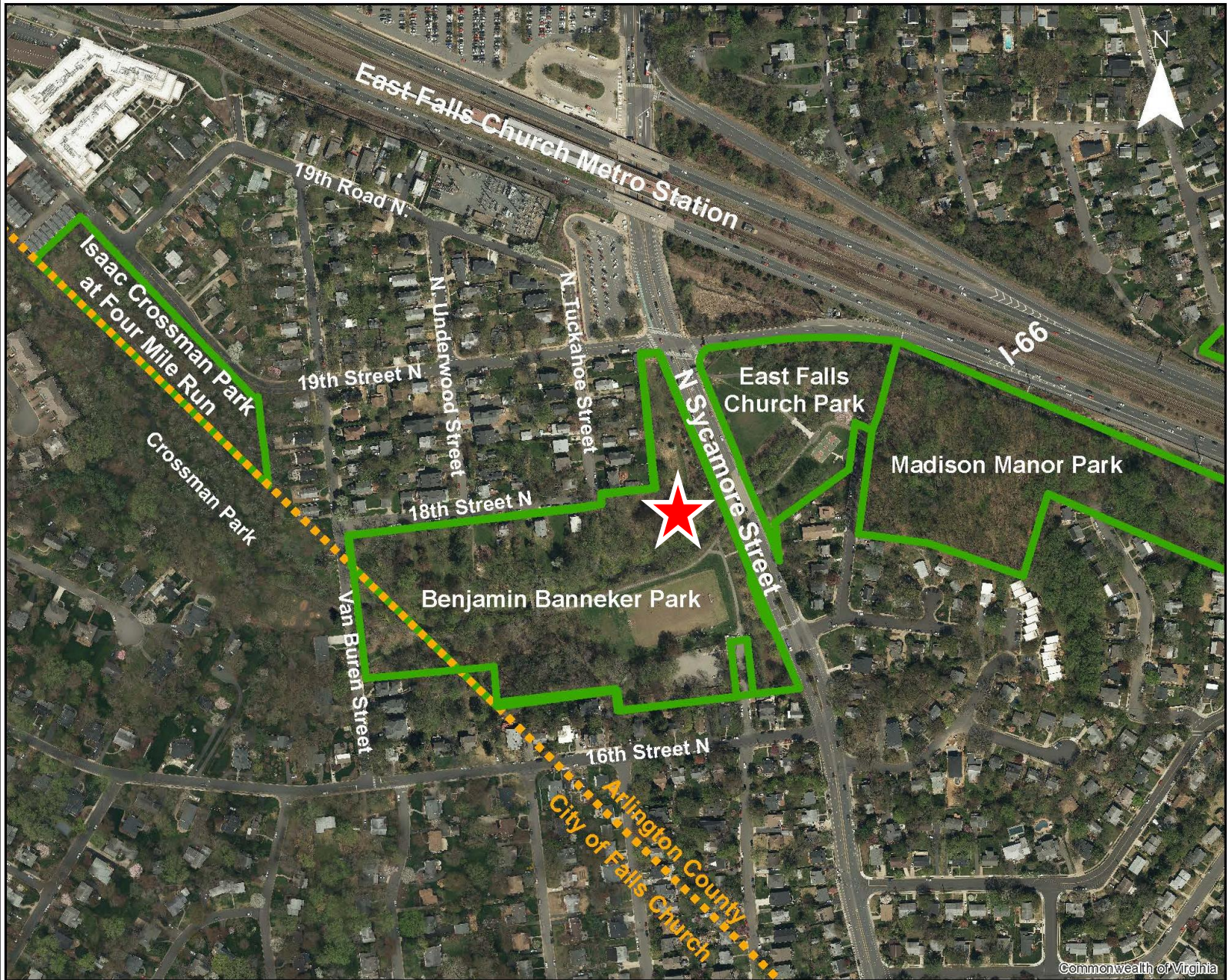
A. Morton Thomas and Associates Consulting
Engineers (AMT)

Project Manager: Greg Osband

PRESENTATION OUTLINE

- A. Information about the project
- B. Feedback heard from initial public outreach –
Summary & Themes
- C. Park environment
- D. Concept schemes
- E. Canopy/Forestry Approach
- F. Next steps and schedule
- G. Question/Answer

VICINITY MAP

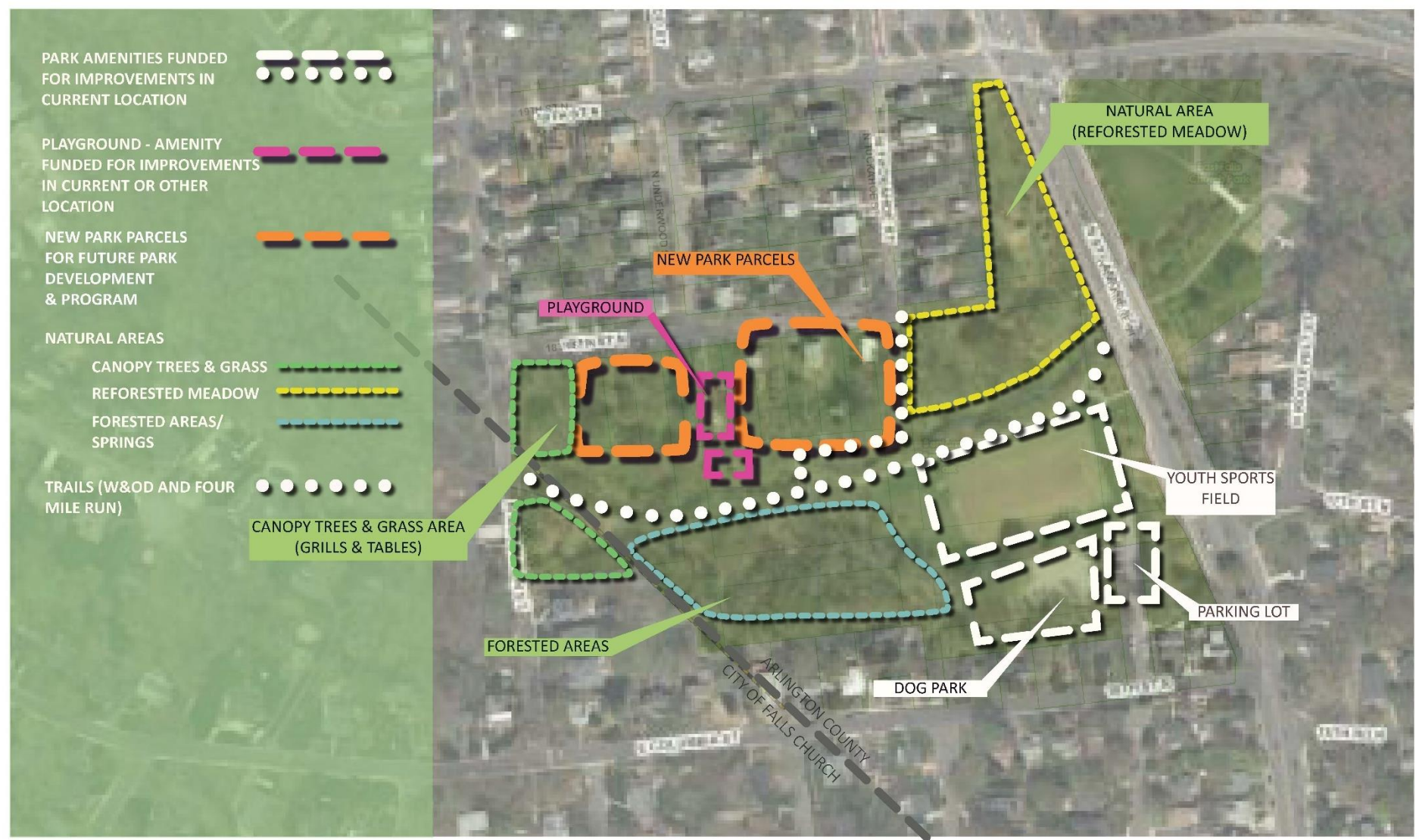


PROJECT COMPONENTS

Project Component	Funding Source	Amount Funded
Replace/renovate existing park amenities	2015 Parks Maintenance Capital Program	\$2,452,000*
Redesign and construction of the Four Mile Run and W&OD multi-purpose trail within park boundary	FY2015 Trail Modernization Program	\$750,000*
Development of a park concept plan to identify future park uses and layout	Future funding source for design and construction	TBD

*Includes planning, design, permitting, and construction costs

PARK AMENITY AREA OF IMPROVEMENTS



WE NEED YOUR INPUT!

Participate in online feedback opportunity

PROJECT COMPONENT	OUTCOME
<p>Parks Maintenance Capital component:</p> <ul style="list-style-type: none">A. Existing park amenitiesB. Four Mile Run and W&OD multi-purpose trail	<p>Your input will help develop a concept design for improving the existing park facilities</p>
<p>Development of a park concept plan to identify future park uses and layout component</p>	<p>Your input will help to develop a concept plan for future park projects</p>

MEETING | FEEDBACK & INPUT



FEEDBACK SUMMARY - AMENITY IMPROVEMENTS

Parking Lot:

- Pedestrian safe passages, improved signage, improved or change surface for safety and access, include sidewalks, improve park and site connections

Dog Park:

- Improve or define small dog area, provide shade (trees/canopy) upgrade and improve features (locks and gates). Consider material surface improvements. Assess interactive structures for dogs

Sports fields:

- Field expansion west open practice/field health, increase accessibility around and to field, consideration of lighting and restroom modifications

FEEDBACK SUMMARY - AMENITY IMPROVEMENTS

Playground

- Natural and traditional elements combined, improved furnishing amenities, signage, add older user interests (teens), keep open space, minimize trail/bike walkway conflict

Trails

- Improve trail multi-usage (widen, split or share), separate users (cyclists and walkers), add furnishings, improve signage, safety and blind spot improvements, lighting improvements

Future Planning Ideas:

- Natural areas, educational signage, consideration of athletic fields/courts, safe access in and to amenities

STORMWATER LIMITATIONS

- RPA (Arlington County 2018 update)
- RPA 100' wide buffer area adjacent to stream
- Floodplain – subject to FEMA and County approval, detailed engineering studies required
- Floodway- subject to FEMA & County approval, limited development, zero elevation change with 100 year elevation. Major flow way of water



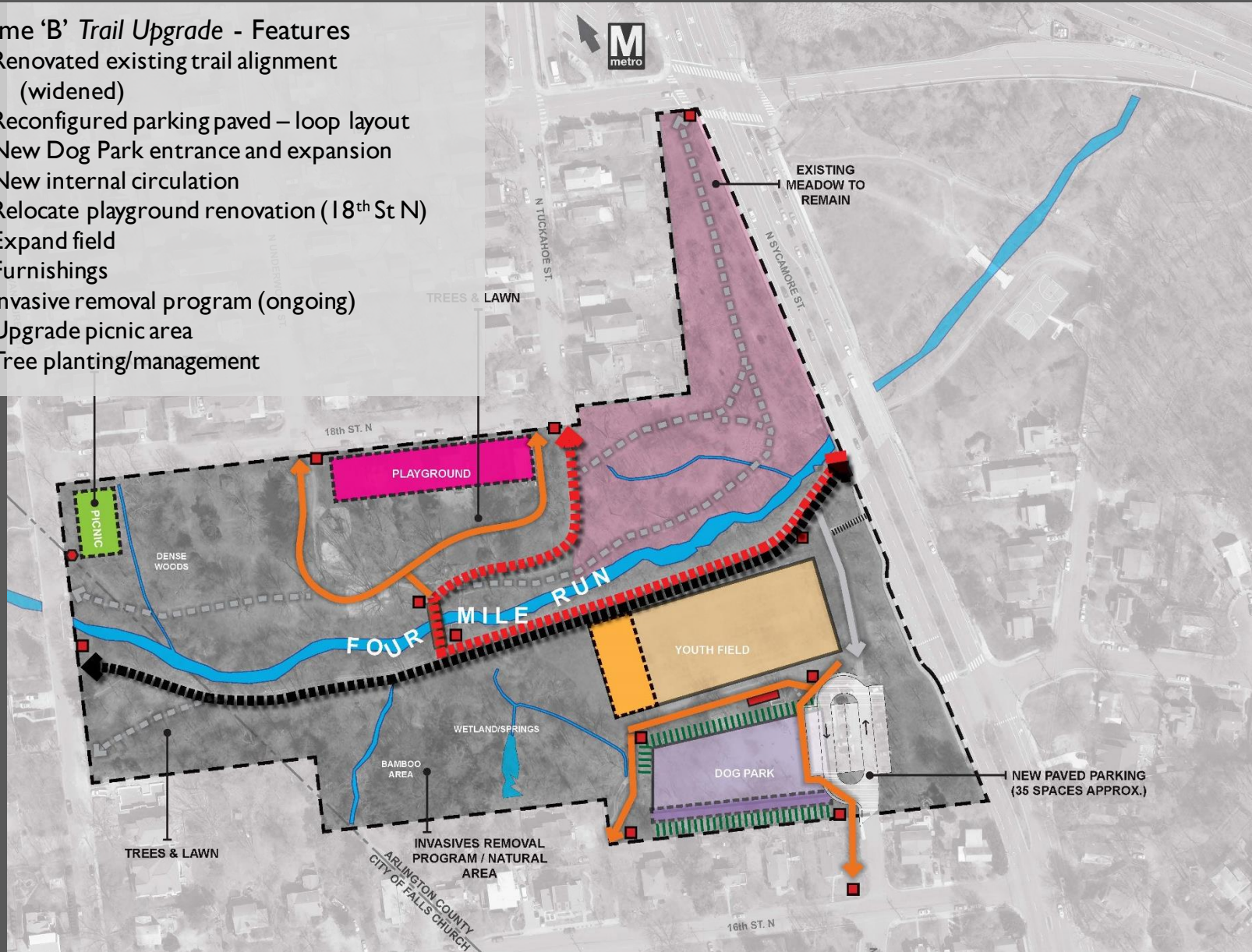
CONCEPT SCHEME OPTIONS



SCHEME 'B' - IMPROVEMENTS

Scheme 'B' Trail Upgrade - Features

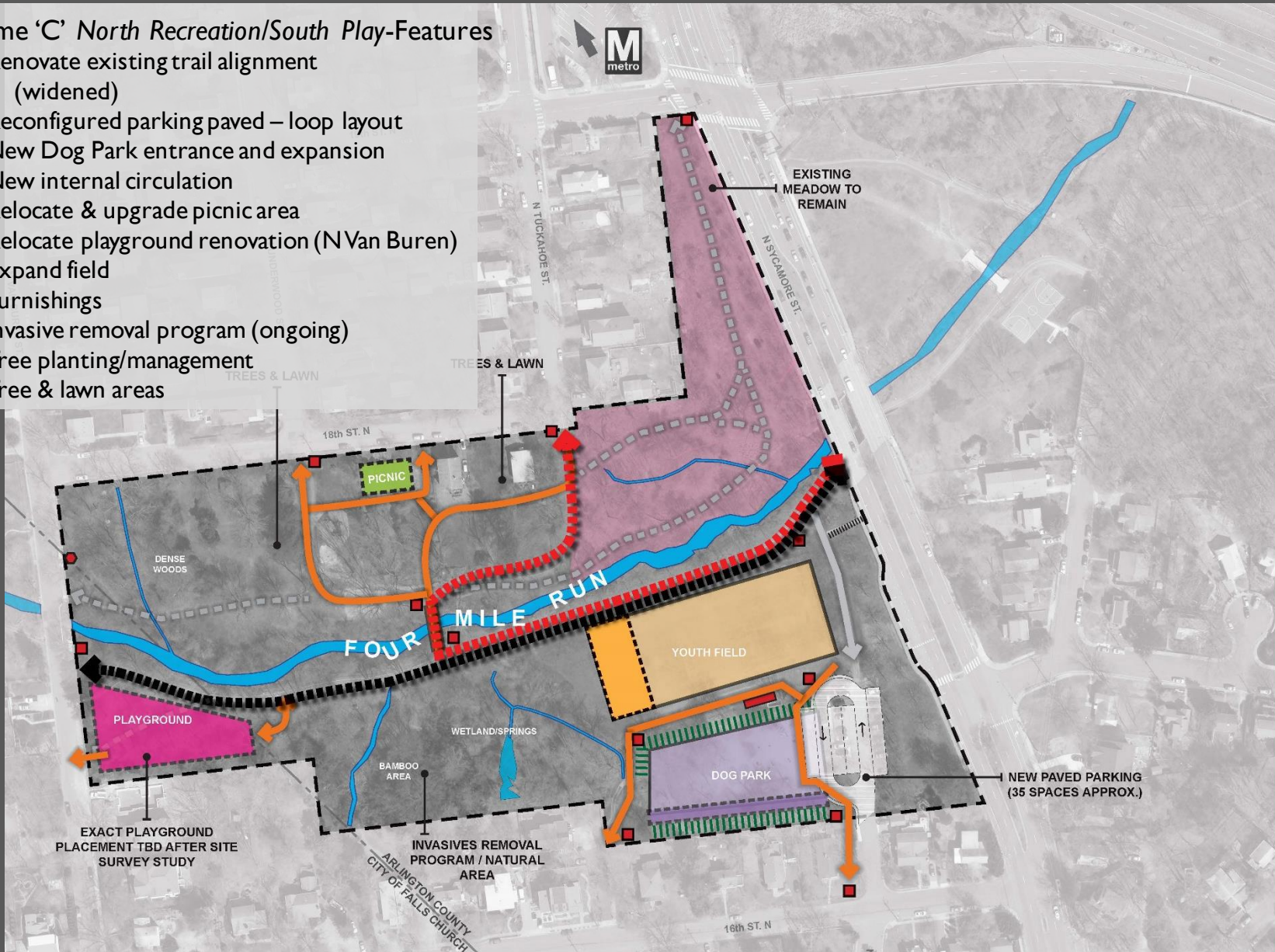
- Renovated existing trail alignment (widened)
- Reconfigured parking paved – loop layout
- New Dog Park entrance and expansion
- New internal circulation
- Relocate playground renovation (18th St N)
- Expand field
- Furnishings
- Invasive removal program (ongoing)
- Upgrade picnic area
- Tree planting/management



SCHEME 'C' - IMPROVEMENTS

Scheme 'C' North Recreation/South Play-Features

- Renovate existing trail alignment (widened)
- Reconfigured parking paved – loop layout
- New Dog Park entrance and expansion
- New internal circulation
- Relocate & upgrade picnic area
- Relocate playground renovation (N Van Buren)
- Expand field
- Furnishings
- Invasive removal program (ongoing)
- Tree planting/management
- Tree & lawn areas



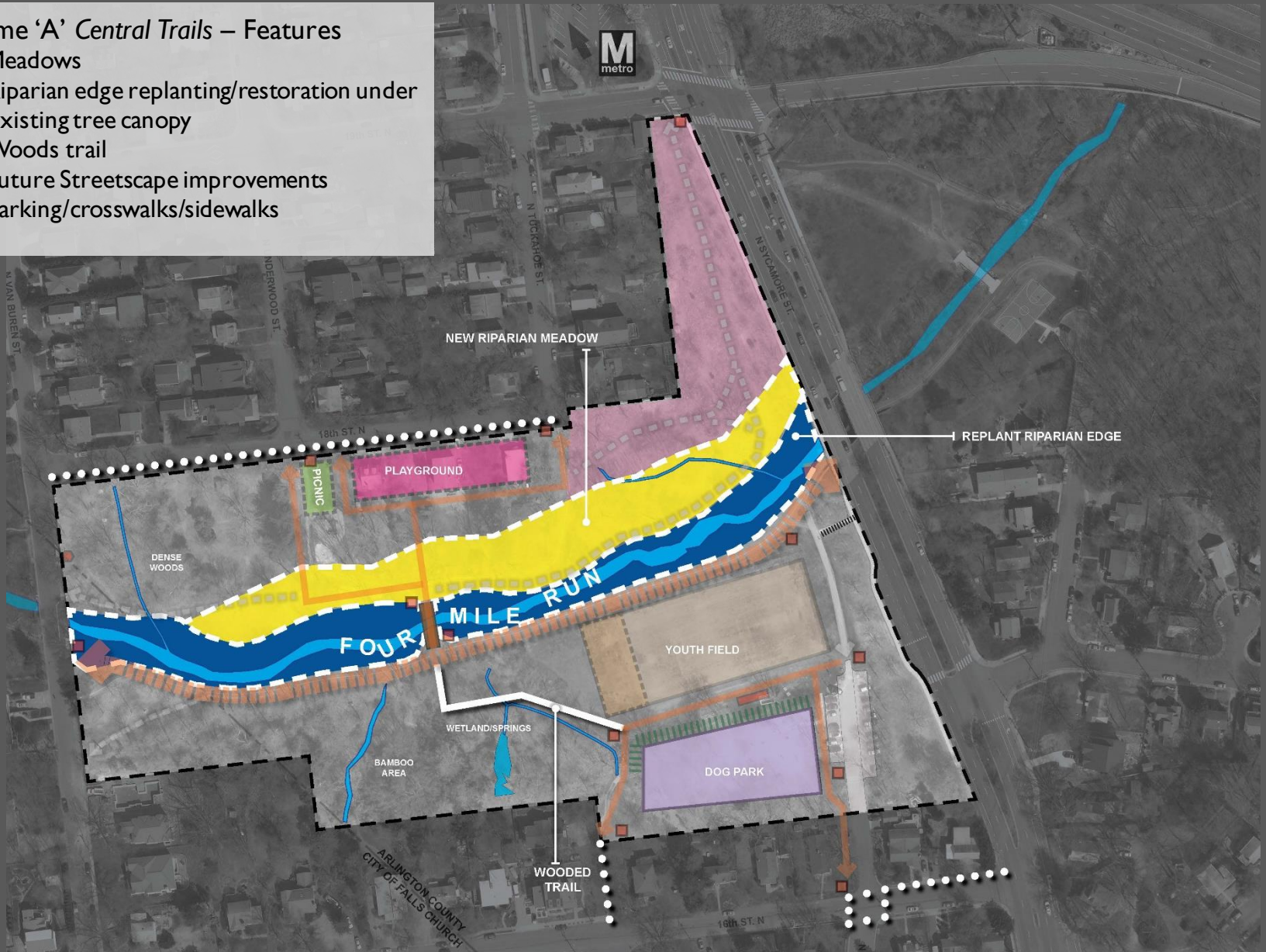
FUTURE PARK PLANNING



CONCEPT A – FUTURE PLANNING

Scheme 'A' Central Trails – Features

- Meadows
- Riparian edge replanting/restoration under existing tree canopy
- Woods trail
- Future Streetscape improvements
- Parking/crosswalks/sidewalks



CONCEPT B – FUTURE PLANNING BI

Scheme 'B' Trail Upgrade- Features

- W&OD trail NW
- Meadows
- Riparian replanting/restoration
- Woods trail
- Future Streetscape improvements
 - Parking/crosswalks/sidewalks



CONCEPT B – FUTURE PLANNING B2

Scheme 'B' Trail Upgrade- Features

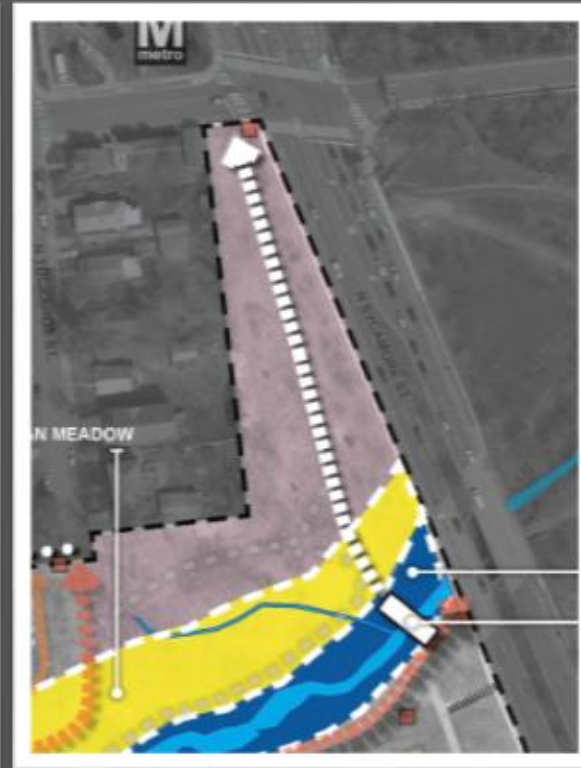
- W&OD trail NE
- Meadows
- Riparian replanting/restoration
- Woods trail
- Future Streetscape improvements
 - Parking/crosswalks/sidewalks



CONCEPT B – FUTURE PLANNING BRIDGE CONSIDERATIONS

Future trail alignment modification considerations:

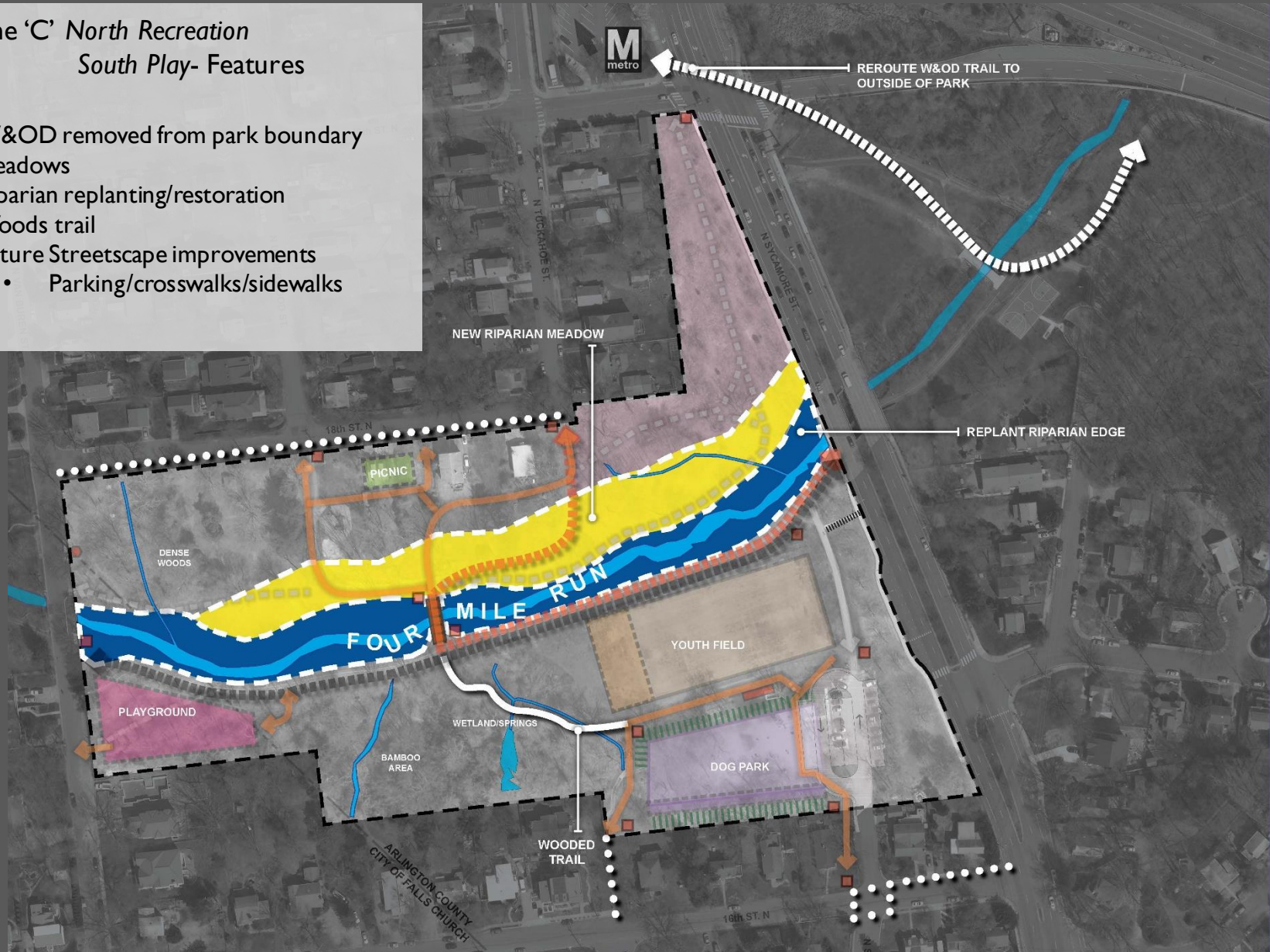
- New placement within Floodway
- Subject to FEMA approval and requirements
- Engineered hydrological studies and computations to assess feasibility
- Project could require a Conditional Letter of Map Revision (CLOMR) for approval by FEMA
- Coordination with NOVA Parks
- Time & Expense considerations
- Funding support from County Board
- Approval of County Board



CONCEPT C – FUTURE PLANNING

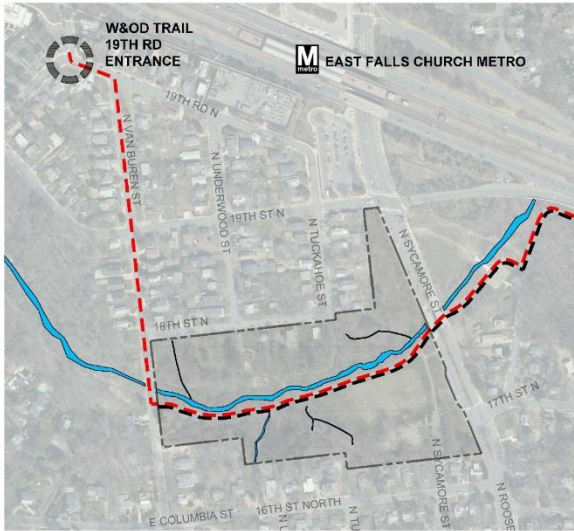
Scheme 'C' North Recreation South Play- Features

- W&OD removed from park boundary
- Meadows
- Riparian replanting/restoration
- Woods trail
- Future Streetscape improvements
 - Parking/crosswalks/sidewalks

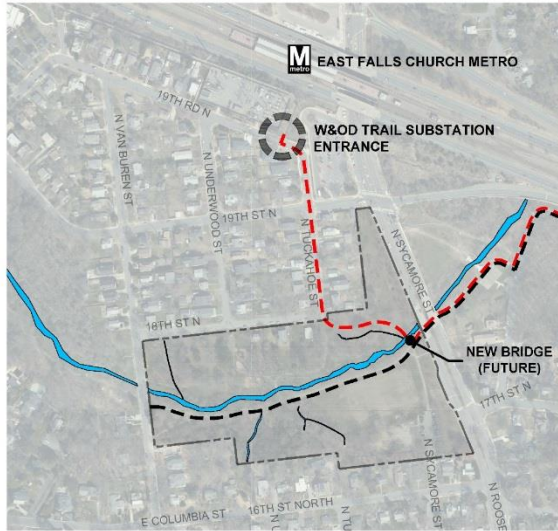


TRAIL CIRCULATION NETWORK

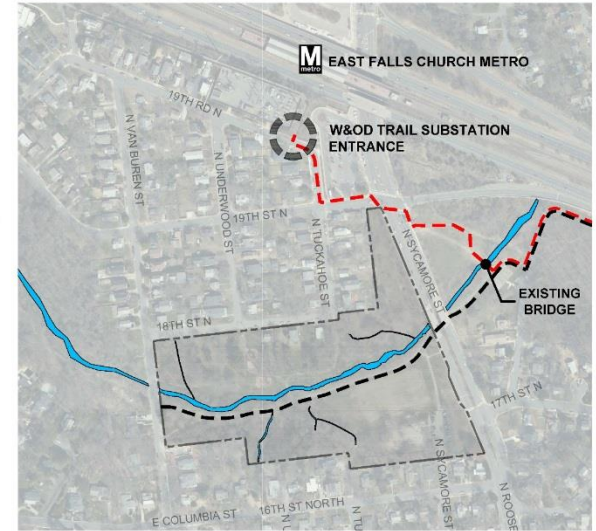
CONCEPT A



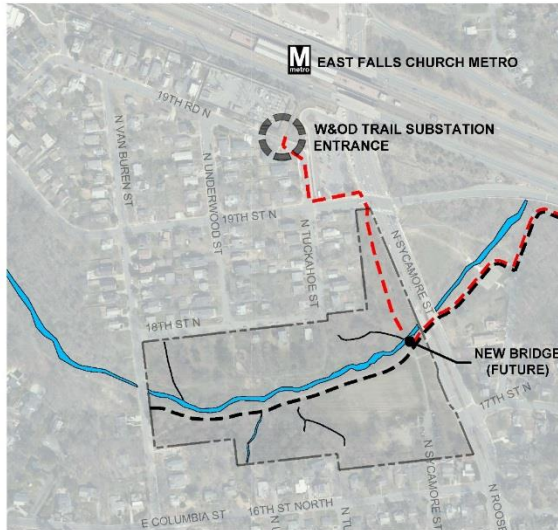
CONCEPT B-1



CONCEPT C



CONCEPT B-2

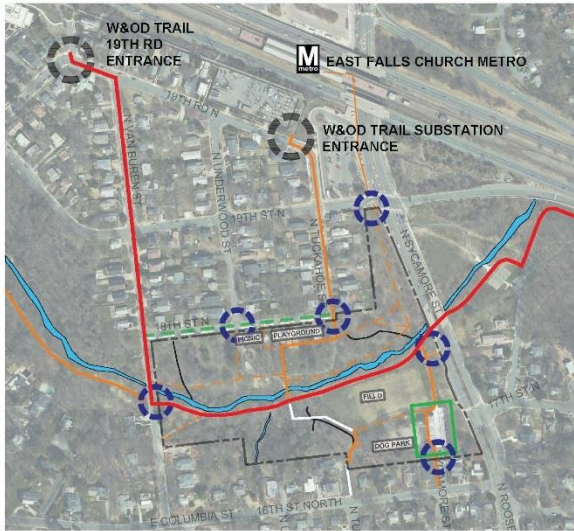


LEGEND

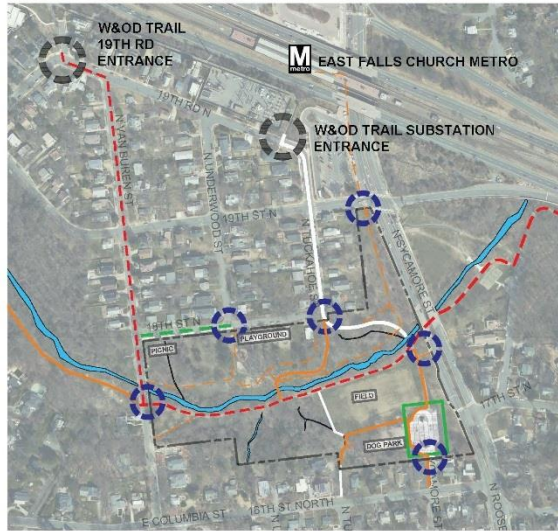
- FOUR MILE RUN TRAIL
- W&O TRAIL
- PARK LIMITS
- STREAM

BICYCLE/PEDESTRIAN NETWORK

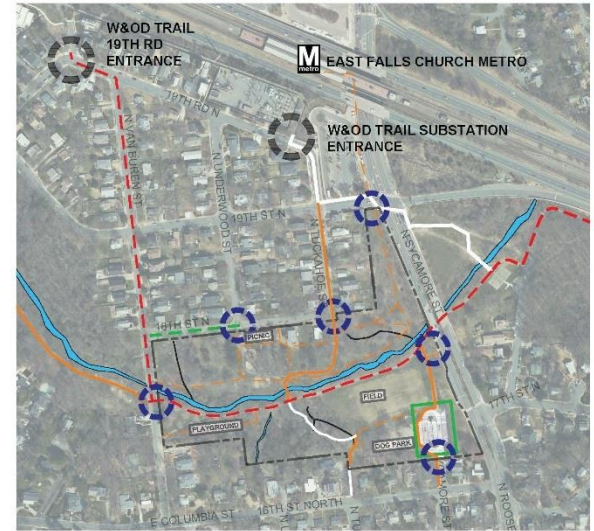
CONCEPT A



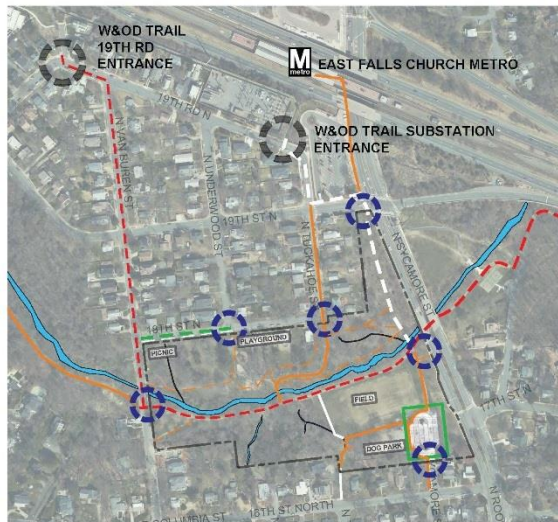
CONCEPT B-1



CONCEPT C

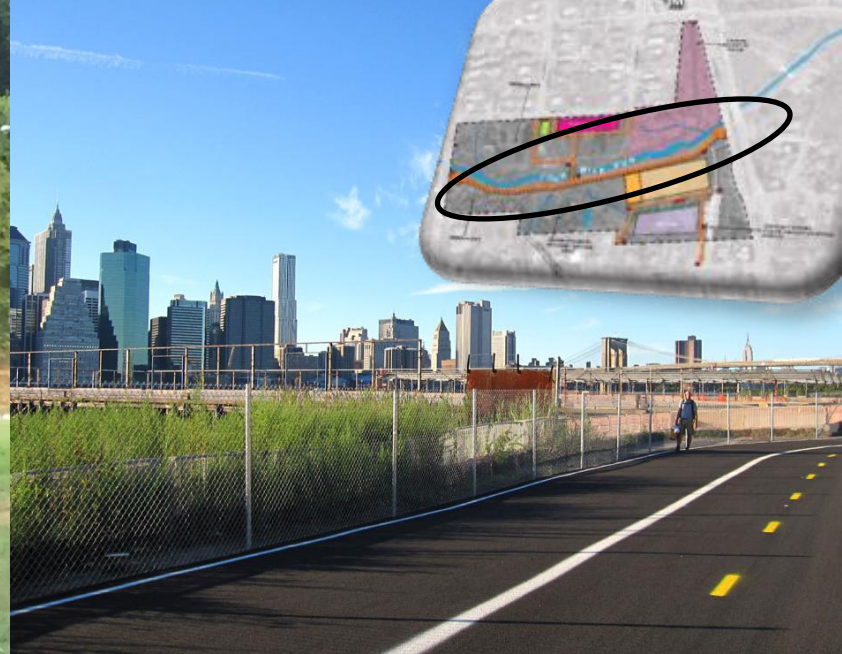


CONCEPT B-2

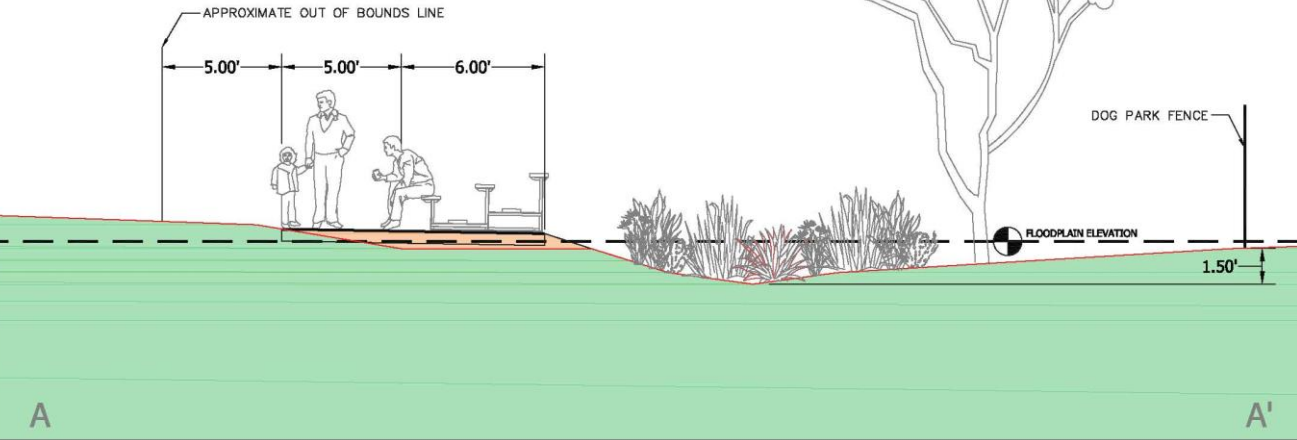
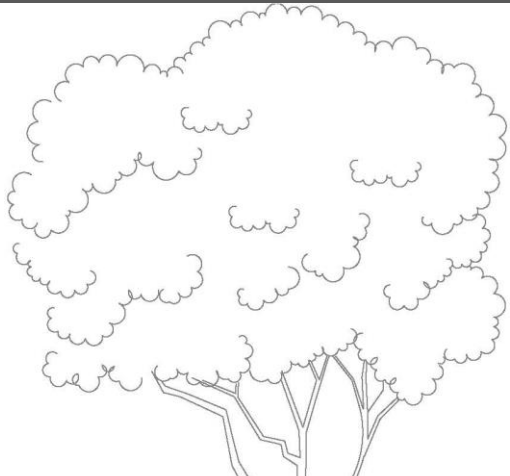
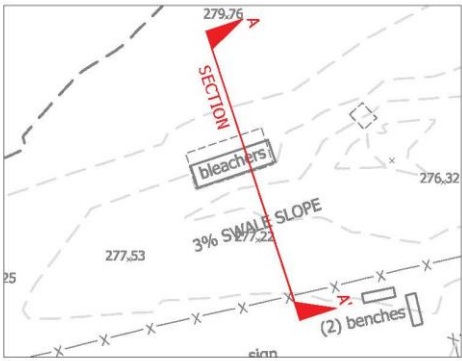


LEGEND

- PARK LIMITS
- STREAM
- PRIMARY BIKE
- SECONDARY BIKE
- PRIMARY PEDESTRIAN
- SECONDARY PEDESTRIAN
- PARKING
- PRIMARY BIKE (FUTURE OPTION)
- PRIMARY PEDESTRIAN (FUTURE PHASE)
- SECONDARY PEDESTRIAN (FUTURE PHASE)
- PARKING (FUTURE PHASE)
- PARK ACCESS POINT (TRUST FOR PUBLIC LAND)

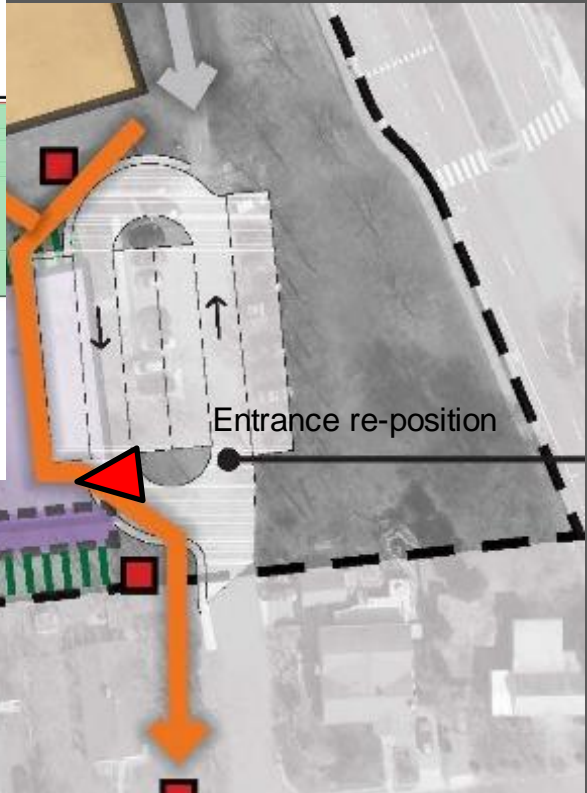


Example: Multi-use trail marking



SCALE 1" = 5'

PROPOSED FILL
 EXISTING GRADE



Improvements:
Field seating/Dog Park/Parking Lot



Example: Wooded Trail/Repurposed material



Example: Meadow & Natural Areas

PARK FORESTRY APPROACH

- Preserve significant and healthy trees
- Assess existing trees in decline, advanced maturity, or hazard qualities in park areas of improvements and plan for phasing of introduction of long term canopy
- Maintain trees needing selective care/pruning shaping in area of improvements
- Remove damaged, unhealthy and invasive vegetation species within primary improvement areas
- Areas of modified and introduced circulation, necessary tree protection measures to minimize impact
- Areas of introduced use- new playground location-work with existing healthy tree canopy to enhance and support amenity while minimizing impact on canopy and vegetation. Any tree removed, follow replacement policy
- Follow County Forestry species and replacement policy to establish canopy approach
- Invasive Removal Program to occur simultaneously with CIP work in (Bamboo Grove)
- Future Planning Projects include removal (as needed) and revegetating park level areas close to 4MR stream
 - Proposed naturalistic low meadow planting in areas of RPA, within existing canopy/edge
 - Retaining tree and lawn areas, planting in moist sunny areas
 - Include mown paths and habitat/ecosystem educational signage
- Work in conjunction closely with PNR and Urban Forestry managers to address tree health, retain and replace approach

NEXT STEPS & SCHEDULE

2017 Planning and Design

- Online questionnaire #2 for draft concept comments
- Public Open House to present final concepts
- County Board Presentation

2017 – 2018 Implement Funded Improvements

- Playground Workshop (following final concept)
- Construction Documentation Development
- Permitting & Bidding
- Construction Administration, Inspection & Certification

A photograph of a park-like setting. In the foreground, there is a dirt path leading through a grassy area with small yellow flowers. To the left, a large, fallen log lies on the ground. In the background, there are several trees, some with bare branches and some with green leaves. A paved road with a yellow line is visible on the left. To the right, a stream flows through a wooded area. The overall scene is a natural, outdoor environment.

Q & A

Diane Probus

dprobus@arlingtonva.us

Jeanette Ankoma-Sey

jankoma-sey@arlingtonva.us

Please give us your feedback:

Project Info & Survey

<https://projects.arlingtonva.us/projects/benjamin-banneker-park-project/>