



DEPARTMENT OF DESIGN & CONSTRUCTION

2770 South Taylor Street • Arlington, VA 22206 • Phone: (703) 228-6613 Fax: (703) 671-2959

December 8, 2017

Subject: New Reed Elementary School Site Tour

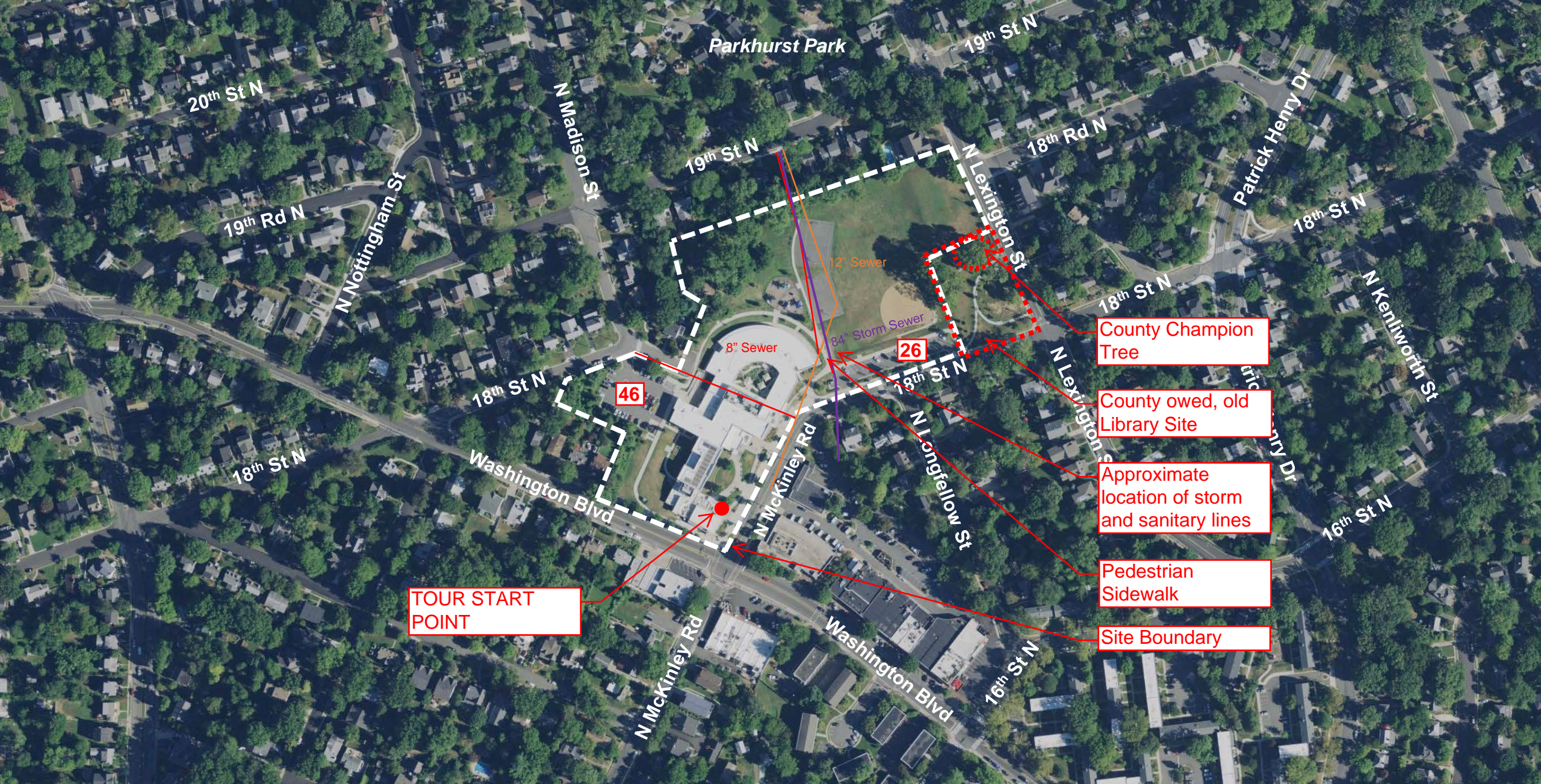
Date: December 10, 2017

Tour 1: 10 am

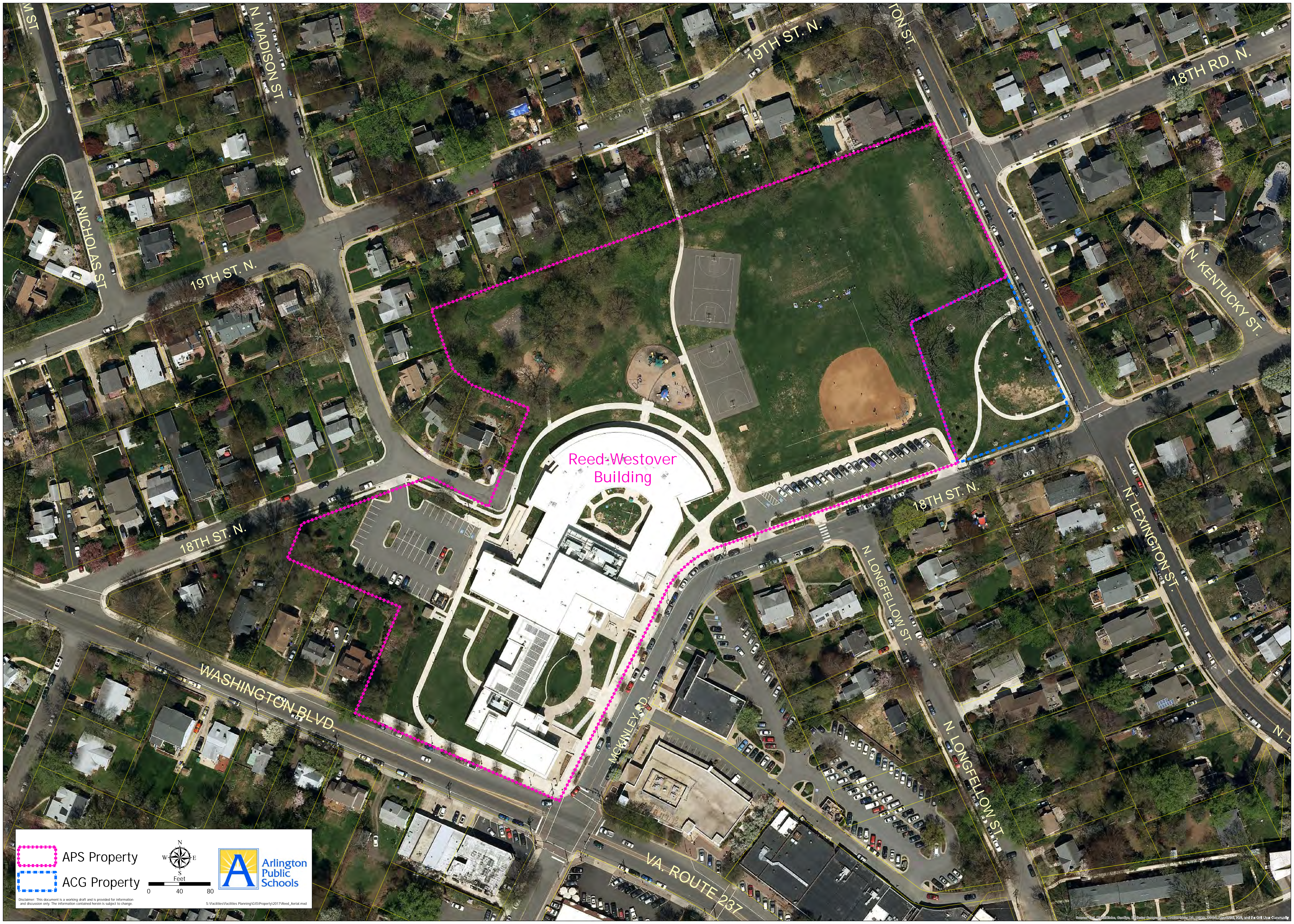
Tour 2: 11am

Agenda:

1. Meet in front of the Library and sign in
2. Tour site starting at N McKinley Road, counter clockwise to Washington Blvd.
3. Discuss site attributes and characteristics
 - a. Topography
 - b. Landscape and vegetation
 - c. Existing site developments
 - d. Site access & parking
 - e. Underground utilities
4. Questions?

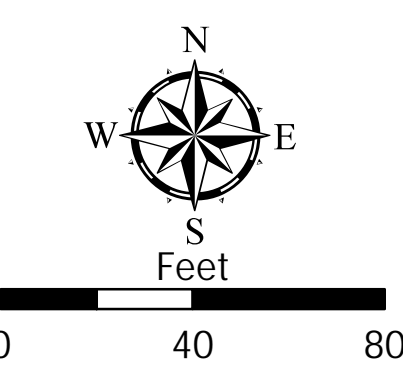


Site Overview



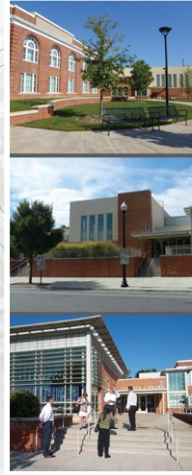
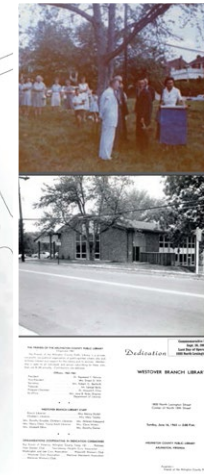
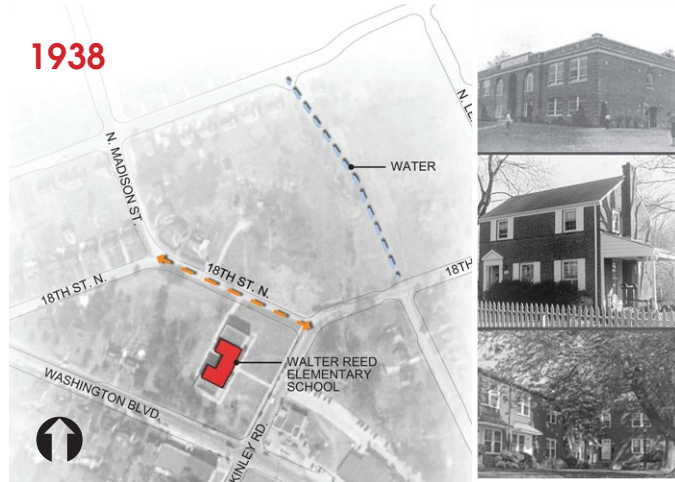
Reed Westover Building

APS Property
ACG Property

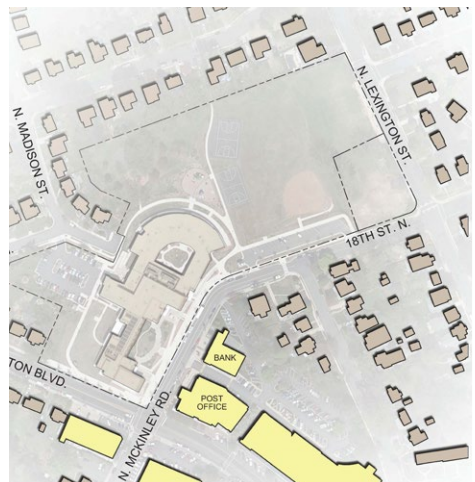


Disclaimer: This document is a working draft and is provided for information and discussion only. The information contained herein is subject to change. S:\Facilities\Facilities Planning\GIS\Property\2017\Reed_Aerial.mxd

Site Analysis



Adjacent Context



Vehicular Circulation



Site Circulation



Environmental/Climate

