

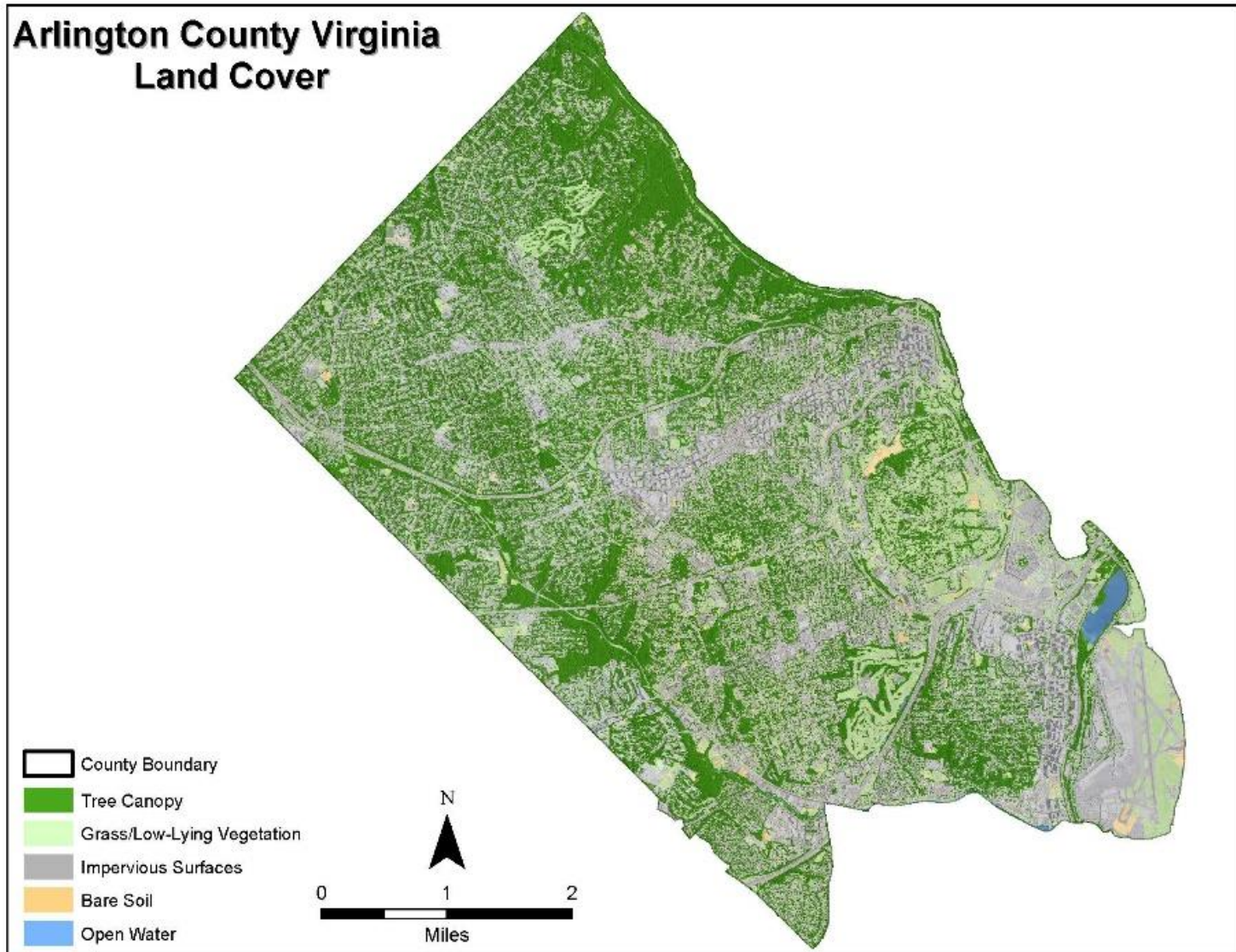
2017 Urban Tree Canopy Study

Department of Parks and Recreation

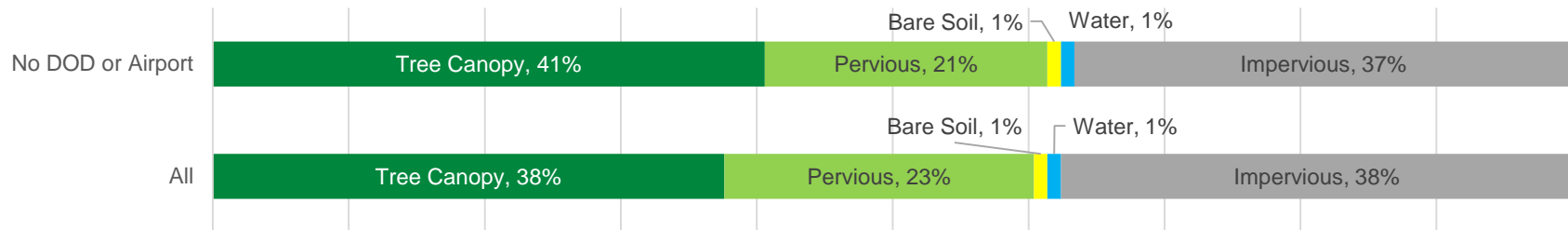
January 25, 2018

- **Study purpose**
 - Provide base-line data to measure ecological, social, and economic benefits that tree canopy provides Arlington.
 - Data will help to focus tree planting, tree preservation, and outreach activities related to promoting Arlington's tree canopy.
 - Compare data of previous studies for increase/decrease in canopy.
- **Study completed in December 2017**
 - Previous studies completed in 2008 and 2011
- **Strong public support for Arlington's tree canopy.**
- **Board direction for FY18 budget (March 2017)**

- Land cover analysis conducted for the entirety of Arlington County, including federal land.
- Study focused on tree canopy, which is the layer of leaves, branches, and stems of trees that cover the ground when viewed from above.
- Study used publicly available 2016 USDA National Agriculture Imagery Program data.
- Study used remote sensing and GIS software to calculate tree canopy at 1 meter resolution.



Results using 2016 data:

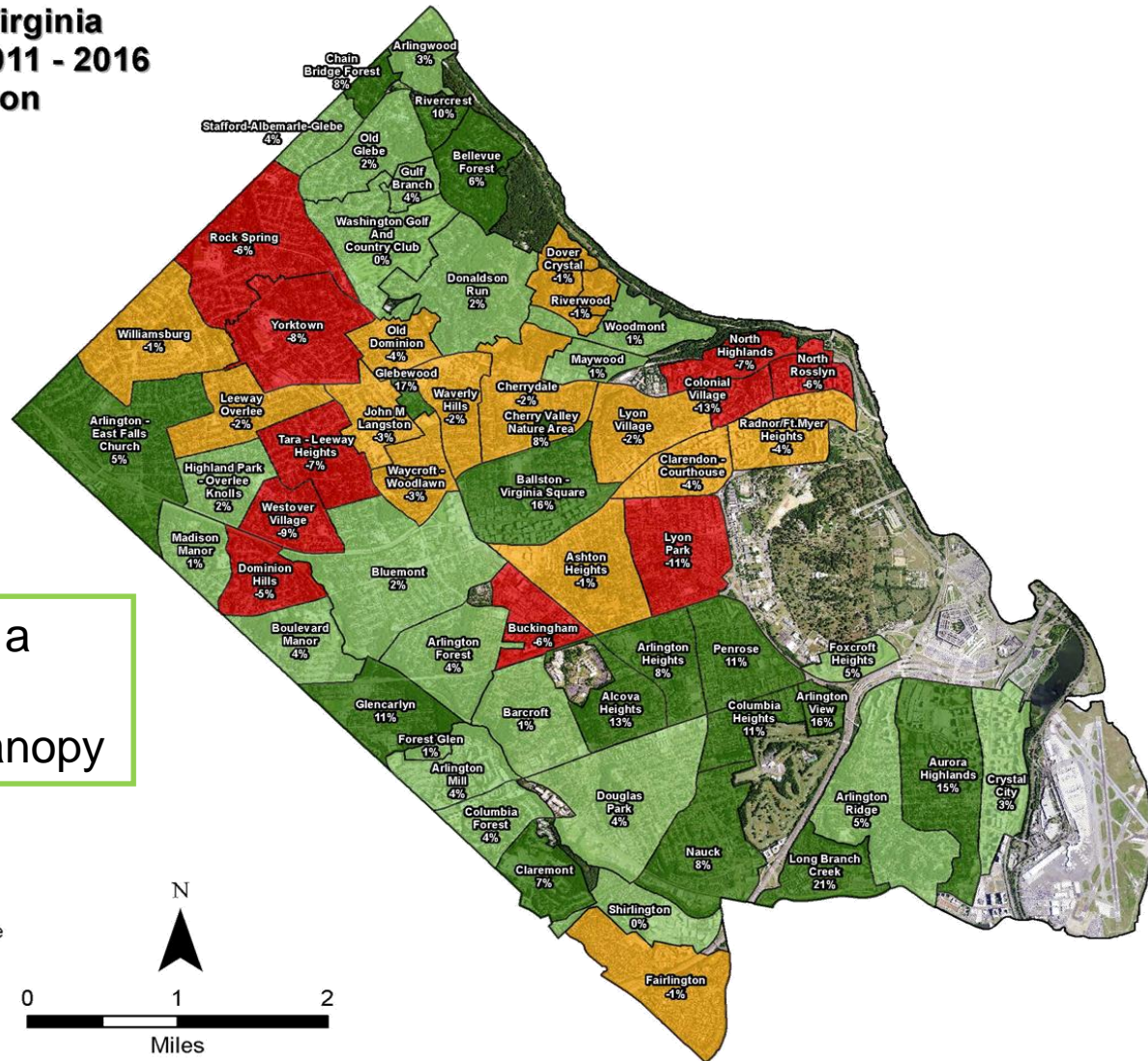


- 41% tree canopy, not including DOD and airport
- 38% tree canopy with all land included
- 1% increase in tree canopy since 2011 study
- Increase due to growth and planting
- Some areas of County have canopy reduction






Tree canopy results by year of data collection

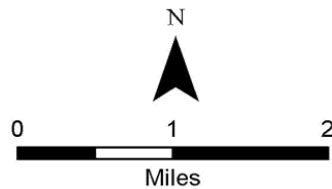
	2008		2011		2016	
	Acres	Percent	Acres	Percent	Acres	Percent
Tree Canopy Excluding DOD and Airport	6,349	43%	5,883	40%	6,015	41%
Tree Canopy Including DOD and Airport	N/A	N/A	6,191	37%	6,356	38%

Arlington County Virginia Canopy Change 2011 - 2016 by Civic Association



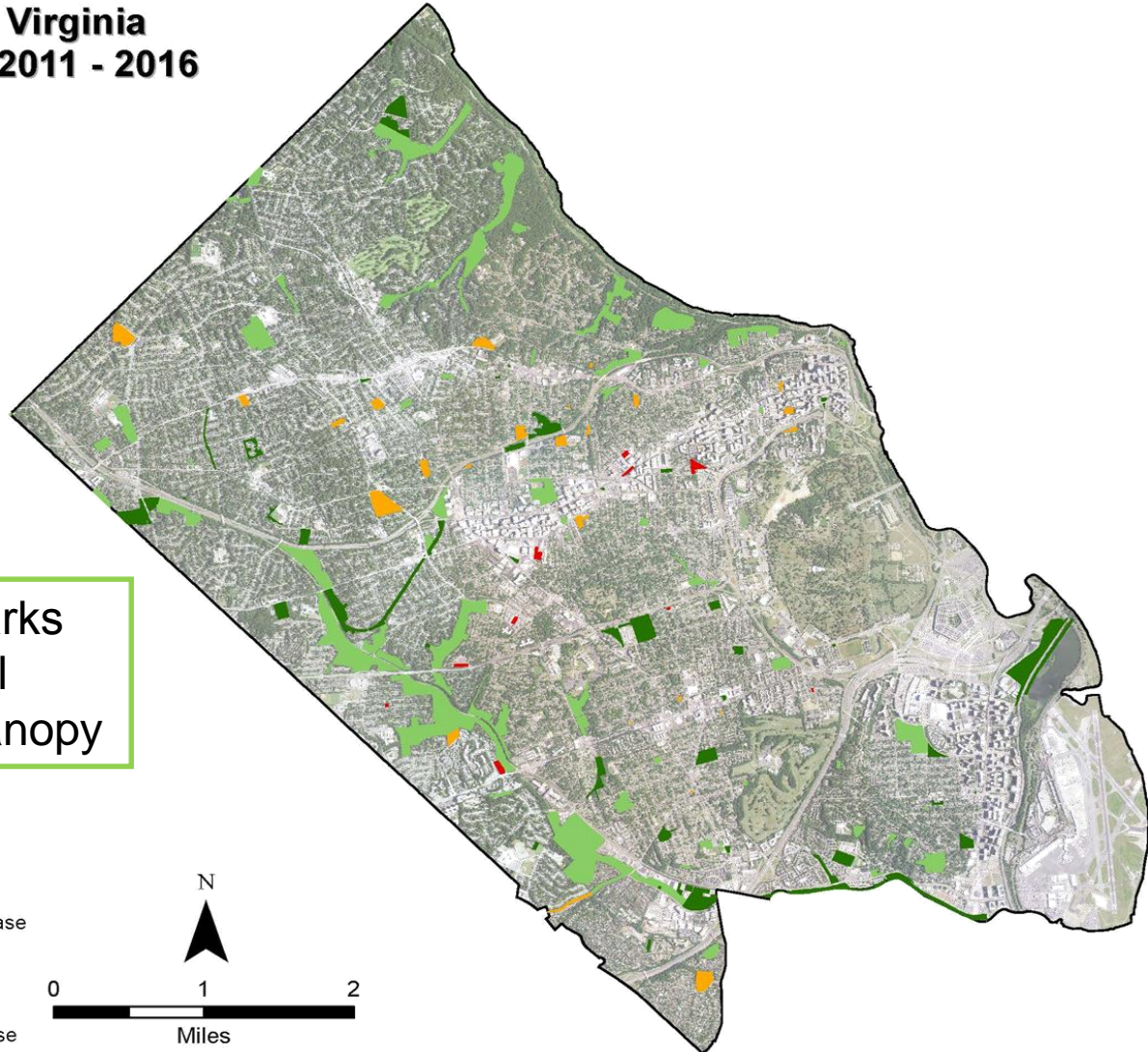
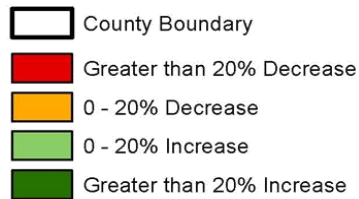
Arlington had a slight overall increase in canopy

-  County Boundary
-  Greater than 5% Decrease
-  0 - 5% Decrease
-  0 - 5% Increase
-  Greater than 5% Increase



Arlington County Virginia Canopy Change 2011 - 2016 By Parks

Arlington's Parks
had an overall
increase in canopy



- Support planting and preservation in areas of loss and low canopy.
- Target outreach efforts for the Tree Canopy Fund.
- Informs the Urban Forest Masterplan update.
- Informs planning activities county-wide.

- Post study and powerpoint on County website following Board update
- Present results to Urban Forestry and Park & Rec Commission
- 2019 kick-off of Integrated Natural Resource Master Plan (combining updates to Urban Forest Master and Natural Resource Management plans)