

# Arlington County Fields Assessment



Inventory Atlas  
October 2015

(Intentionally Blank)

## ***Inventory Process and Scoring Information***

This inventory was completed in a series of steps. The planning team first prepared a preliminary list of existing fields using information provided by the client as well as aerial photography and the client Geographic Information System (GIS) data. All fields identified were given GIS points and names.

Next, field visits were conducted by the consulting team to confirm the preliminary data and collect additional information.

During the field visits and evaluations, missing components were added to the data set, and each field was evaluated based on established criteria. During the site visits the following information was collected:

- Field type
- Field location
- Evaluation of field condition - record of comfort and convenience features
- Evaluation of comfort and convenience features
- Evaluation of park design and ambience
- Site photos
- General comments

Information collected during the site visit was then compiled and corrections and comparisons made to GIS. Edits and updates have been made to the original dataset based on staff review.

The following comprise the initial evaluation criteria used during site visits:

Site Amenities Scoring Key:		1	2	3
<b>Restroom</b>				
	Porta Let	1		
	Porta Let w/ Enclosure		2	
	Plumbed Restroom and Easily Accessible from All Fields			3
<b>Parking</b>				
	Street or Adjacent to Site	1		
	Available Onsite Generally Meets Needs		2	
	Available Onsite and Meets Needs Fully			3
<b>Lighting</b>				
	Egress Lighting Onsite but Inadequate	1		
	Egress Lighting Onsite Generally Meets Needs		2	
	Egress Lighting Onsite Meets Needs Fully			3
<b>Maintenance Storage</b>				
	Maintenance Area onsite	1		
	Maintenance Area Enclosed and Secured		2	
	Premium Maintenance Area			3
<b>Drinking Water</b>				
	Water Fountain Available at Site	1		
	Water Fountain Located Proximate to Fields		2	
	Water Fountain Located in Each Dugout or at Each Field			3
<b>Concessions</b>				
	Concessions Onsite but Not Near Fields	1		
	Concessions Located Near Fields		2	
	Concessions Located Near All Fields and Fully Meets Needs			3
<b>Playground</b>				
	Playground Located Onsite but Not Near Fields	1		
	Playground Located Near Fields		2	
	Premium Playground Located Near Fields			3



Rectangle Scoring Key:	1	2	3
Use/Access Percent TBD			
<i>Could be 0-100% depending on Park and Rec access to field programming</i>			
Overall Field Condition			
Poor Quality Field	1		
Good Quality Field		2	
Excellent Quality Field			3
Turf			
Poor Quality Turf	1		
Good Quality Turf		2	
Excellent Quality Turf			3
Synthetic Turf			
Needs Replaced	1		
Good but Beyond Half Life		2	
Excellent/New (First Half of Life)			3
Irrigation			
Underground Sprinkler System	1		
Lighting			
Poor Lighting	1		
Traditional Lighting		2	
Musco Dark Sky			3
Bleachers			
Old Bleachers (poor quality or location)	1		
Aluminum Bleachers		2	
Aluminum Bleachers with ADA access and seating			3
Team Storage			
Onsite but Not Near Fields or Inadequate	1		
Storage Located at Each Field		2	
Premium Team Storage at Each Field			3
Goals			
Inadequate Goals	1		
Goals Onsite		2	
Permanent Combo Goals			3
Issues with Field Runout (Width or Length)			
minor issues with runout area	-1		
No Runout Issues			1
WarmUp			
Adjacent area for Warm up available	1		
General Drainage			
Significant Drainage Issues	1		
Minor Drainage Issues		2	
No Apparent Drainage Issues			3
Scoreboard			
Available and useable on field	1		

Diamonds Scoring Key:		1	2	3
Use/Access Percent TBD				
<i>Could be 0-100% depending on Park and Rec access to field programming</i>				
Overall Field Condition				
	Poor Quality Field	1		
	Good Quality Field		2	
	Excellent Quality Field			3
Turf				
	Poor Quality Turf	1		
	Good Quality Turf		2	
	Excellent Quality Turf			3
Irrigation				
	Underground Sprinkler System	1		
Lighting				
	Poor Lighting	1		
	Traditional Lighting		2	
	Musco Dark Sky			3
Bleachers				
	Old Bleachers (poor quality or location)	1		
	Aluminum Bleachers		2	
	Aluminum Bleachers with ADA access and seating			3
Team Storage				
	Team Storage Present but Inadequate	1		
	Team Storage Located Near Fields		2	
	Premium Team Storage Located at Each Field			3
Scoreboard				
	Scoreboard	1		
Press Box				
	Press Box	1		
Infield Condition				
	Poor Quality Infield	1		
	Good Quality Infield		2	
	Excellent Quality Infield			3
Backstop				
	Limited Backstop	1		
	Adequate Backstop		2	
	New Backstop			3
Dugout				
	Limited and Uncovered Dugout	1		
	Covered Dugout		2	
	Covered Dugout with Concrete Floor and ADA Access			3
Fencing				
	Limited Fencing or Aging Fencing	1		
	Adequate Fencing		2	
	New Fencing and Complete Field			3
Warm Up				
	General Area Available for Warm Up	1		
	Warm Up Area (Batting Cage Onsite)		2	
	Warm Up Area (Batting Cage Adjacent to Field)			3
General Drainage				
	Significant Drainage Issues	1		
	Minor Drainage Issues		2	
	No Apparent Drainage Issues			3

# L01 Abingdon Elementary School

**Legend**

■ Rectangle

◆ Diamond

○ Combination Field

▲ Open Turf/Other Field (not assessed)

● Public Parks

● Private Open Space

● School





# Arlington County Fields Assessment Review

GIS ID      Location Name  
**L01**      **Abingdon Elementary School**

GRASP®  
Score

GRASP®  
Modifier Element

0	Restroom
3	Parking
0	Security/Egress Lighting
0	Shade Shelter
0	Drinking Water
0	Concessions
3	Playground
0	Maintenance Storage

ADA Red Flag  
*Limited access*

Comments



# Arlington County Rectangle Fields

## L01 Abingdon Elementary School

GIS ID: **R01** Field Name: **Abingdon Elementary School**

GRASP® Score: Field Element

1	General Field Score	
1	Turf	
0	SynTurf	
0	Irrigation	ADA Red Flag
0	Lighting	Limited access
0	Goals	
0	Bleachers	
0	Team Storage	Comments
-1	Run Out Area	Little used field
0	Scoreboard	
0	PressBox	
0	WarmUp	
2	General Field Drainage	

### Additional Information

Classification	Arlington Public Schools	Permits	Permit Takes Priority
Prim/Sec	No Funding	Age Range	Youth
Grass	Cool Season	Community	No
Synthetic	No	Area Mgr	Kevin Stalica
Irrigation	No	Sports Play	Soccer, Ultimate Frisbee
Lighted	No	Regulation	None
Light Notes	N/A		
Amenities	None		

**THIS PAGE INTENTIONALLY LEFT BLANK**



# L02 Alcova Heights Park

**Legend**

- Rectangle
- Diamond
- Combination Field
- Open Turf/Other Field (not assessed)
- Public Parks
- Private Open Space
- School







# Arlington County Fields Assessment Review

GIS ID            Location Name  
**L02**            **Alcova Heights Park**

GRASP®  
Score

GRASP®  
Modifier Element

<b>3</b>	Restroom
<b>1</b>	Parking
<b>0</b>	Security/Egress Lighting
<b>0</b>	Shade Shelter
<b>0</b>	Drinking Water
<b>0</b>	Concessions
<b>3</b>	Playground
<b>0</b>	Maintenance Storage

ADA Red Flag  
*Limited access*

Comments  
*Small neighborhood park*

## L02 Alcova Heights Park

GIS ID Field Name

**D01 Alcova Heights Park**

GRASP® GRASP®  
Score Field Element

2	General Field Score	
3	Infield Condition	
1	Turf Condition	
0	Irrigation	
0	Field Lighting	ADA Red Flag
3	Backstop	Limited access
1	Dugouts	
2	Fencing	
0	Warm Up (Batting Cage, Bullpen, etc)	General Comments
2	General Drainage	Planned and funded upgrades included in scoring
0	Bleachers	
0	Scoreboard	
0	Press Box	
0	Team Storage	

---

### Additional Information

Classification	County Parkland	Permits	Permit Takes Priority
Pri/Sec	Secondary	Age Range	Youth
Grass	Cool Season	Community	No
Irrigation	No	Area Mgr	Kasey Spriggs
Lighted	No	Sports Play	Baseball, Soccer
Light Notes	N/A	Regulation	None
Amenities	Backstop, Benches, Restrooms		

**THIS PAGE INTENTIONALLY LEFT BLANK**

# L03 Arlington Hall West Park

Legend

- Rectangle
- Diamond
- Combination Field
- Open Turf/Other Field (not assessed)
- Public Parks
- Private Open Space
- School





# Arlington County Fields Assessment Review

GIS ID      Location Name  
**L03**      **Arlington Hall West Park**

GRASP® Score	GRASP® Modifier Element
1	Restroom
2	Parking
0	Security/Egress Lighting
0	Shade Shelter
3	Drinking Water
0	Concessions
2	Playground
0	Maintenance Storage

ADA Red Flag  
*Limited access*

Comments



# Arlington County Rectangle Fields

## L03 Arlington Hall West Park

GIS ID: **R02** Field Name: **Arlington Hall West**

GRASP® Score: Field Element

<b>2</b>	General Field Score	
<b>2</b>	Turf	
<b>0</b>	SynTurf	
<b>1</b>	Irrigation	
<b>0</b>	Lighting	ADA Red Flag <i>Access to field limited to stairs</i>
<b>2</b>	Goals	
<b>0</b>	Bleachers	
<b>0</b>	Team Storage	Comments
<b>1</b>	Run Out Area	<i>With backstop present this could serve as combo field with upgrades</i>
<b>0</b>	Scoreboard	
<b>0</b>	PressBox	
<b>1</b>	WarmUp	
<b>2</b>	General Field Drainage	





### Additional Information

Classification	County Parkland	Permits	Permit Only
Prim/Sec	Primary	Age Range	Youth
Grass	Bermuda	Community	No
Synthetic	No	Area Mgr	Kasey Spriggs
Irrigation	Yes	Sports Play	Soccer
Lighted	No	Regulation	None
Light Notes	N/A		
Amenities	Junior Goals		

**THIS PAGE INTENTIONALLY LEFT BLANK**



# L04 Arlington Science Focus School

- Legend**
-  Rectangle
  -  Diamond
  -  Combination Field
  -  Open Turf/Other Field (not assessed)
  -  Public Parks
  -  Private Open Space
  -  School





# Arlington County Fields Assessment Review

GIS ID            Location Name  
**L04**            **Arlington Science Focus School**

GRASP®  
Score

GRASP®  
Modifier Element

1	Restroom
1	Parking
0	Security/Egress Lighting
0	Shade Shelter
0	Drinking Water
0	Concessions
2	Playground
0	Maintenance Storage

ADA Red Flag

Comments

*Restroom at park across street*



# Arlington County Rectangle Fields

## L04 Arlington Science Focus School

GIS ID: **R03** Field Name: **Arlington Science Focus School**

GRASP® Score: GRASP® Field Element

<b>2</b>	General Field Score	
<b>3</b>	Turf	
<b>0</b>	SynTurf	
<b>1</b>	Irrigation	ADA Red Flag
<b>0</b>	Lighting	
<b>0</b>	Goals	
<b>0</b>	Bleachers	
<b>0</b>	Team Storage	Comments
<b>1</b>	Run Out Area	<i>Newly resodded. Size limited by perimeter track. Does have practice backstop</i>
<b>0</b>	Scoreboard	
<b>0</b>	PressBox	
<b>0</b>	WarmUp	
<b>2</b>	General Field Drainage	

### Additional Information

Classification	Arlington Public Schools	Permits	Permit Only
Prim/Sec	Primary	Age Range	Youth
Grass	Bermuda	Community	No
Synthetic	No	Area Mgr	Lyndell Core
Irrigation	Yes	Sports Play	Baseball, Soccer
Lighted	No	Regulation	None
Light Notes	N/A		
Amenities	None		

**THIS PAGE INTENTIONALLY LEFT BLANK**



# L05 Arlington Traditional School

- Legend**
- Rectangle
  - Diamond
  - Combination Field
  - Open Turf/Other Field (not assessed)
  - Public Parks
  - Private Open Space
  - School





# Arlington County Fields Assessment Review

GIS ID            Location Name  
**L05**            **Arlington Traditional School**

GRASP®  
Score

GRASP®  
Modifier Element

<b>1</b>	Restroom
<b>1</b>	Parking
<b>0</b>	Security/Egress Lighting
<b>0</b>	Shade Shelter
<b>0</b>	Drinking Water
<b>0</b>	Concessions
<b>0</b>	Playground
<b>0</b>	Maintenance Storage

ADA Red Flag

Comments

## L05 Arlington Traditional School

GIS ID Field Name

**D02** **Arlington Traditional School #1**

GRASP® GRASP®  
Score Field Element

2	General Field Score	
2	Infield Condition	
2	Turf Condition	
0	Irrigation	
0	Field Lighting	ADA Red Flag
1	Backstop	Limited access
1	Dugouts	
1	Fencing	
0	Warm Up (Batting Cage, Bullpen, etc)	General Comments
2	General Drainage	Short fields
1	Bleachers	
0	Scoreboard	
0	Press Box	
0	Team Storage	

---

### Additional Information

Classification	Arlington Public Schools	Permits	Permit Takes Priority
Pri/Sec	Secondary	Age Range	Youth
Grass	Cool Season	Community	No
Irrigation	No	Area Mgr	Lyndell Core
Lighted	No	Sports Play	Softball
Light Notes	N/A	Regulation	None
Amenities	Backstop, Bleachers, Player Benches		





# Arlington County Diamond Fields

## L05 Arlington Traditional School

GIS ID Field Name

**D03** **Arlington Traditional School #2**

GRASP® GRASP®  
Score Field Element

2	General Field Score	
2	Infield Condition	
2	Turf Condition	
0	Irrigation	
0	Field Lighting	ADA Red Flag
1	Backstop	
1	Dugouts	
1	Fencing	
0	Warm Up (Batting Cage, Bullpen, etc)	General Comments
2	General Drainage	
1	Bleachers	
0	Scoreboard	
0	Press Box	
0	Team Storage	

---

### Additional Information

Classification	Arlington Public Schools	Permits	Permit Takes Priority
Pri/Sec	Secondary	Age Range	Youth
Grass	Cool Season	Community	No
Irrigation	No	Area Mgr	Lyndell Core
Lighted	No	Sports Play	Softball
Light Notes	N/A	Regulation	None
Amenities	Backstop, Bleachers, Player Benches, Storage		

# L06 Barcroft Elementary School

**Legend**

■ Rectangle

◆ Diamond

○ Combination Field

▲ Open Turf/Other Field (not assessed)

● Public Parks

● Private Open Space

● School





# Arlington County Fields Assessment Review

GIS ID            Location Name  
**L06**            **Barcroft Elementary School**

GRASP®  
Score

GRASP®  
Modifier Element

<b>0</b>	Restroom
<b>3</b>	Parking
<b>0</b>	Security/Egress Lighting
<b>0</b>	Shade Shelter
<b>0</b>	Drinking Water
<b>0</b>	Concessions
<b>2</b>	Playground
<b>0</b>	Maintenance Storage

ADA Red Flag

Comments



# Arlington County Diamond Fields

## L06 Barcroft Elementary School

GIS ID: **D09** Field Name: **Barcroft Elementary School**

GRASP® Score: GRASP® Field Element

1	General Field Score	
1	Infield Condition	
1	Turf Condition	
0	Irrigation	
0	Field Lighting	ADA Red Flag
1	Backstop	
1	Dugouts	
0	Fencing	
0	Warm Up (Batting Cage, Bullpen, etc)	General Comments
2	General Drainage	<i>Not a very nice field. Field size is limited by perimeter track and garden.</i>
0	Bleachers	
0	Scoreboard	
0	Press Box	
0	Team Storage	

---

### Additional Information

Classification	Arlington Public Schools	Permits	Permit Takes Priority
Pri/Sec	Secondary	Age Range	Youth
Grass	Cool Season	Community	No
Irrigation	No	Area Mgr	Kevin Stalica
Lighted	No	Sports Play	Baseball, Soccer
Light Notes	N/A	Regulation	None
Amenities	Backstop, Benches		

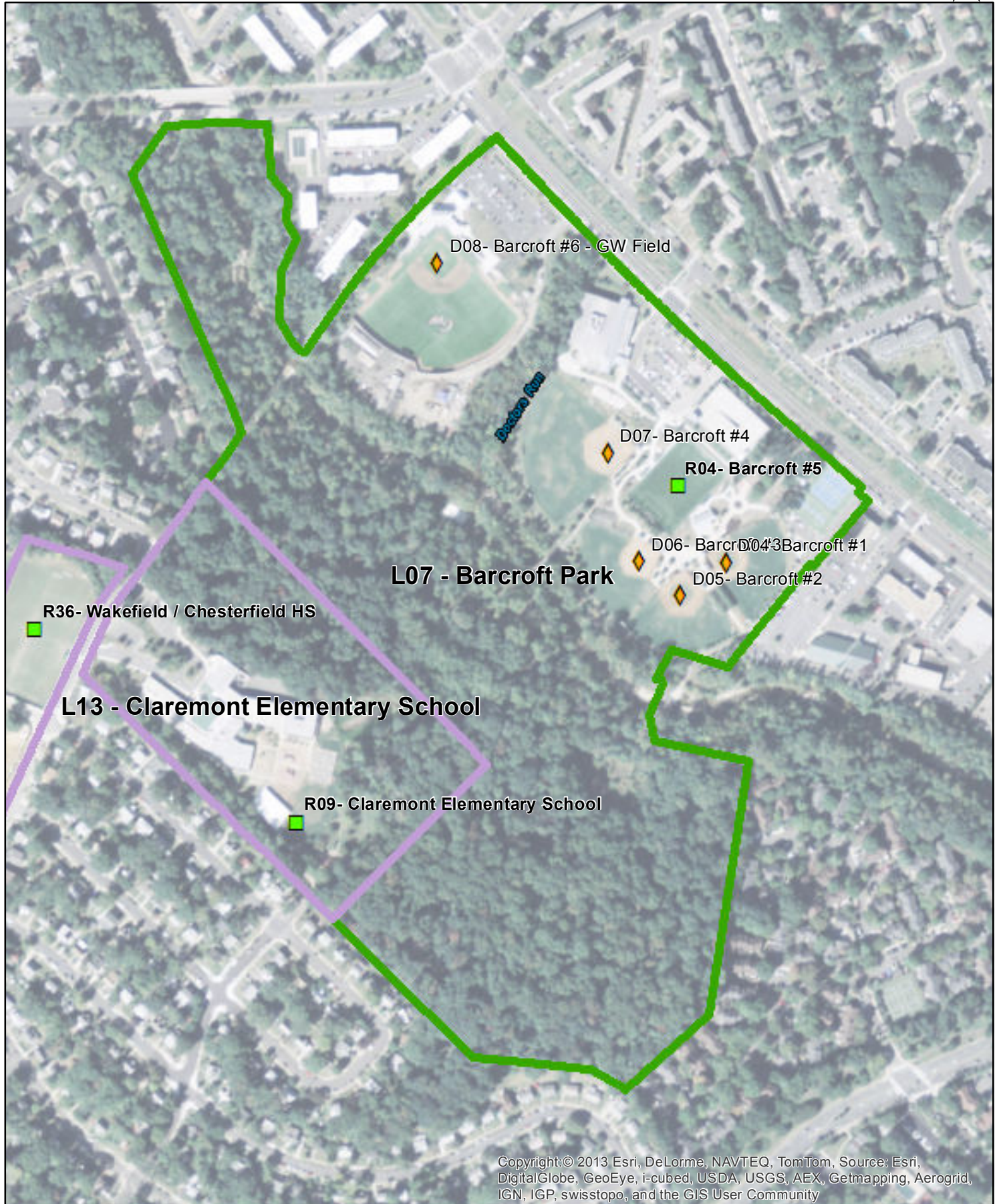
**THIS PAGE INTENTIONALLY LEFT BLANK**



**L07  
Barcroft Park**

**Legend**

- Rectangle
- ◆ Diamond
- Combination Field
- ▲ Open Turf/Other Field (not assessed)
- Public Parks
- Private Open Space
- School





# Arlington County Fields Assessment Review

GIS ID            Location Name  
**L07**            **Barcroft Park**

GRASP®  
Score

GRASP®  
Modifier Element

<b>3</b>	Restroom
<b>3</b>	Parking
<b>2</b>	Security/Egress Lighting
<b>3</b>	Shade Shelter
<b>3</b>	Drinking Water
<b>3</b>	Concessions
<b>3</b>	Playground
<b>3</b>	Maintenance Storage

ADA Red Flag

Comments

*Nice facility and field complex*





# Arlington County Diamond Fields

## L07 Barcroft Park

GIS ID                      Field Name  
**D04                      Barcroft #1**

GRASP®                      GRASP®  
 Score                      Field Element

3	General Field Score	
3	Infield Condition	
3	Turf Condition	
1	Irrigation	
3	Field Lighting	ADA Red Flag
2	Backstop	
3	Dugouts	
3	Fencing	
3	Warm Up (Batting Cage, Bullpen, etc)	General Comments
3	General Drainage	
3	Bleachers	
1	Scoreboard	
1	Press Box	
2	Team Storage	

### Additional Information

Classification	County Parkland	Permits	Permit Only
Pri/Sec	Primary	Age Range	Youth
Grass	Bermuda Infield	Community	No
Irrigation	Yes	Area Mgr	Kevin Stalica
Lighted	Yes	Sports Play	Softball, Baseball
Light Notes	Musco Dark Sky / 11:00pm	Regulation	46/60 baseball or 50/70 baseball
Amenities	Backstop, Covered Dugouts, Bullpens, Press Box, Storage, Scoreboard, Bleachers, Outfield Fence, Batting Cages, Concessions, Restrooms		

## L07 Barcroft Park

GIS ID            Field Name  
**D05            Barcroft #2**

GRASP®        GRASP®  
 Score            Field Element

3	General Field Score	
3	Infield Condition	
3	Turf Condition	
1	Irrigation	
3	Field Lighting	ADA Red Flag
2	Backstop	
3	Dugouts	
3	Fencing	
3	Warm Up (Batting Cage, Bullpen, etc)	General Comments
3	General Drainage	<i>Nice field complex</i>
3	Bleachers	
1	Scoreboard	
1	Press Box	
2	Team Storage	

---

### Additional Information

Classification	County Parkland	Permits	Permit Only
Pri/Sec	Primary	Age Range	Youth
Grass	Cool Season	Community	No
Irrigation	Yes	Area Mgr	Kevin Stalica
Lighted	Yes	Sports Play	Softball, Baseball
Light Notes	Musco Dark Sky / 11:00pm	Regulation	46/60 baseball or 50/70 baseball
Amenities	Backstop, Covered Dugouts, Bullpens, Press Box, Storage, Scoreboard, Bleachers, Outfield Fence, Batting Cages, Concessions, Restrooms		



# Arlington County Diamond Fields

## L07 Barcroft Park

GIS ID                      Field Name

**D06**                        **Barcroft #3**

GRASP®                    GRASP®  
Score                        Field Element

3	General Field Score	
3	Infield Condition	
3	Turf Condition	
1	Irrigation	
3	Field Lighting	ADA Red Flag
2	Backstop	
3	Dugouts	
3	Fencing	
3	Warm Up (Batting Cage, Bullpen, etc)	General Comments
1	General Drainage	<i>drainage issues</i>
3	Bleachers	
1	Scoreboard	
1	Press Box	
3	Team Storage	

---

### Additional Information

Classification	County Parkland	Permits	Permit Only
Pri/Sec	Primary	Age Range	Youth
Grass	Cool Season	Community	No
Irrigation	Yes	Area Mgr	Kevin Stalica
Lighted	Yes	Sports Play	Softball, Baseball
Light Notes	Musco Dark Sky / 11:00pm	Regulation	Girls Softball
Amenities	Backstop, Covered Dugouts, Bullpens, Press Box, Storage, Scoreboard, Bleachers, Outfield Fence, Batting Cages, Concessions, Restrooms		



# Arlington County Diamond Fields

## L07 Barcroft Park

GIS ID            Field Name  
**D07            Barcroft #4**

GRASP®        GRASP®  
 Score            Field Element

3	General Field Score	
3	Infield Condition	
2	Turf Condition	
1	Irrigation	
3	Field Lighting	ADA Red Flag
3	Backstop	
3	Dugouts	
3	Fencing	
3	Warm Up (Batting Cage, Bullpen, etc)	General Comments
2	General Drainage	
3	Bleachers	
1	Scoreboard	
1	Press Box	
0	Team Storage	

---

### Additional Information

Classification	County Parkland	Permits	Permit Only
Pri/Sec	Primary	Age Range	Youth and Adult
Grass	Cool Season	Community	No
Irrigation	Yes	Area Mgr	Kevin Stalica
Lighted	Yes	Sports Play	Softball, Baseball
Light Notes	Musco Dark Sky / 11:00pm	Regulation	Adult Softball
Amenities	Backstop, Covered Dugouts, Bullpens, Press Box, Storage, Scoreboard, Bleachers, Outfield Fence, Batting Cages, Concessions, Restrooms		

## L07 Barcroft Park

GIS ID                      Field Name

**R04**                        **Barcroft #5**

GRASP®                    GRASP®  
Score                        Field Element

<b>3</b>	General Field Score	
<b>3</b>	Turf	
<b>3</b>	SynTurf	
<b>0</b>	Irrigation	ADA Red Flag
<b>3</b>	Lighting	
<b>3</b>	Goals	
<b>3</b>	Bleachers	
<b>2</b>	Team Storage	Comments
<b>1</b>	Run Out Area	<i>Newer synthetic</i>
<b>0</b>	Scoreboard	
<b>0</b>	PressBox	
<b>0</b>	WarmUp	
<b>3</b>	General Field Drainage	

---

### Additional Information

Classification	County Parkland	Permits	Permit Takes Priority
Prim/Sec	N/A - Synthetic	Age Range	Youth and Adult
Grass	Synthetic	Community	Community Drop-In with Limited Programming
Synthetic	Yes	Area Mgr	Kevin Stalica
Irrigation	N/A - Synthetic	Sports Play	Soccer
Lighted	Yes	Regulation	Junior Soccer
Light Notes	Musco Dark Sky / 11:00pm		
Amenities	Junior Goals, Covered Benches and Bleachers, Concessions, Corner Flags, Restrooms		





# Arlington County Diamond Fields

## L07 Barcroft Park

GIS ID                      Field Name

**D08**                      **Barcroft #6 - GW Field**

GRASP®                      GRASP®  
Score                      Field Element

3	General Field Score	
3	Infield Condition	
3	Turf Condition	
1	Irrigation	
3	Field Lighting	ADA Red Flag
3	Backstop	
3	Dugouts	
3	Fencing	
3	Warm Up (Batting Cage, Bullpen, etc)	General Comments
3	General Drainage	<i>Synthetic shared with GW</i>
3	Bleachers	
1	Scoreboard	
1	Press Box	
3	Team Storage	

### Additional Information

Classification	County Parkland	Permits	Permit Only
Pri/Sec	N/A - Synthetic	Age Range	Youth and Adult
Grass	Synthetic	Community	No
Irrigation	N/A - Synthetic	Area Mgr	Kevin Stalica
Lighted	Yes	Sports Play	Baseball
Light Notes	Musco Dark Sky / 11:00pm	Regulation	90ft baseball
Amenities	Backstop, Bleachers, Outfield Fence, Bullpen, Batting Cages, Storage, Restrooms, Concessions, Pressbox, Scoreboard		

Legend

■ Rectangle

◆ Diamond

○ Combination Field

▲ Open Turf/Other Field (not assessed)

● Public Parks

● Private Open Space

● School



# L08 Barrett Elementary School



D10 - Barrett Elementary School

L08 - Barrett Elementary School



# Arlington County Fields Assessment Review

GIS ID            Location Name  
**L08**            **Barrett Elementary School**

GRASP®  
Score

GRASP®  
Modifier Element

<b>0</b>	Restroom
<b>2</b>	Parking
<b>0</b>	Security/Egress Lighting
<b>0</b>	Shade Shelter
<b>0</b>	Drinking Water
<b>0</b>	Concessions
<b>3</b>	Playground
<b>0</b>	Maintenance Storage

ADA Red Flag

Comments



# Arlington County Diamond Fields

## L08 Barrett Elementary School

GIS ID **D10** Field Name **Barrett Elementary School**

GRASP® Score GRASP® Field Element

1	General Field Score	
1	Infield Condition	
1	Turf Condition	
0	Irrigation	
0	Field Lighting	ADA Red Flag
1	Backstop	
1	Dugouts	
0	Fencing	
0	Warm Up (Batting Cage, Bullpen, etc)	General Comments
2	General Drainage	<i>Field has limited function because of temp classroom</i>
1	Bleachers	
0	Scoreboard	
0	Press Box	
0	Team Storage	

---

### Additional Information

Classification	Arlington Public Schools	Permits	Permit Takes Priority
Pri/Sec	Secondary	Age Range	Youth
Grass	Cool Season	Community	No
Irrigation	No	Area Mgr	Lyndell Core
Lighted	No	Sports Play	Baseball
Light Notes	N/A	Regulation	None
Amenities	Backstop, Bleachers		

**THIS PAGE INTENTIONALLY LEFT BLANK**



**L09  
Benjamin Banneker Park**

**Legend**

- Rectangle
- ◆ Diamond
- ◉ Combination Field
- ▲ Open Turf/Other Field (not assessed)
- Public Parks
- Private Open Space
- School





# Arlington County Fields Assessment Review

GIS ID            Location Name  
**L09**            **Benjamin Banneker Park**

GRASP® Score	GRASP® Modifier Element
<b>2</b>	Restroom
<b>1</b>	Parking
<b>0</b>	Security/Egress Lighting
<b>0</b>	Shade Shelter
<b>0</b>	Drinking Water
<b>0</b>	Concessions
<b>0</b>	Playground
<b>2</b>	Maintenance Storage

ADA Red Flag  
*Limited access*

Comments  
*Park targeted for upgrades. Dog park shares parking. Planned portolet enclosure*



# Arlington County Rectangle Fields

## L09 Benjamin Banneker Park

GIS ID	Field Name	
<b>R05</b>	<b>Benjamin Banneker Park</b>	
GRASP® Score	GRASP® Field Element	
<b>2</b>	General Field Score	
<b>1</b>	Turf	
<b>0</b>	SynTurf	
<b>1</b>	Irrigation	ADA Red Flag
<b>0</b>	Lighting	Limited access
<b>2</b>	Goals	
<b>1</b>	Bleachers	
<b>0</b>	Team Storage	Comments
<b>1</b>	Run Out Area	Due for upgrades. Currently some bare spots
<b>0</b>	Scoreboard	
<b>0</b>	PressBox	
<b>0</b>	WarmUp	
<b>2</b>	General Field Drainage	

### Additional Information

Classification	County Parkland	Permits	Permit Only
Prim/Sec	Primary	Age Range	Youth
Grass	Bermuda	Community	No
Synthetic	No	Area Mgr	Kevin Stalica
Irrigation	Yes	Sports Play	Soccer
Lighted	No	Regulation	Junior Soccer
Light Notes	N/A		
Amenities	Junior Goals, Bleachers		

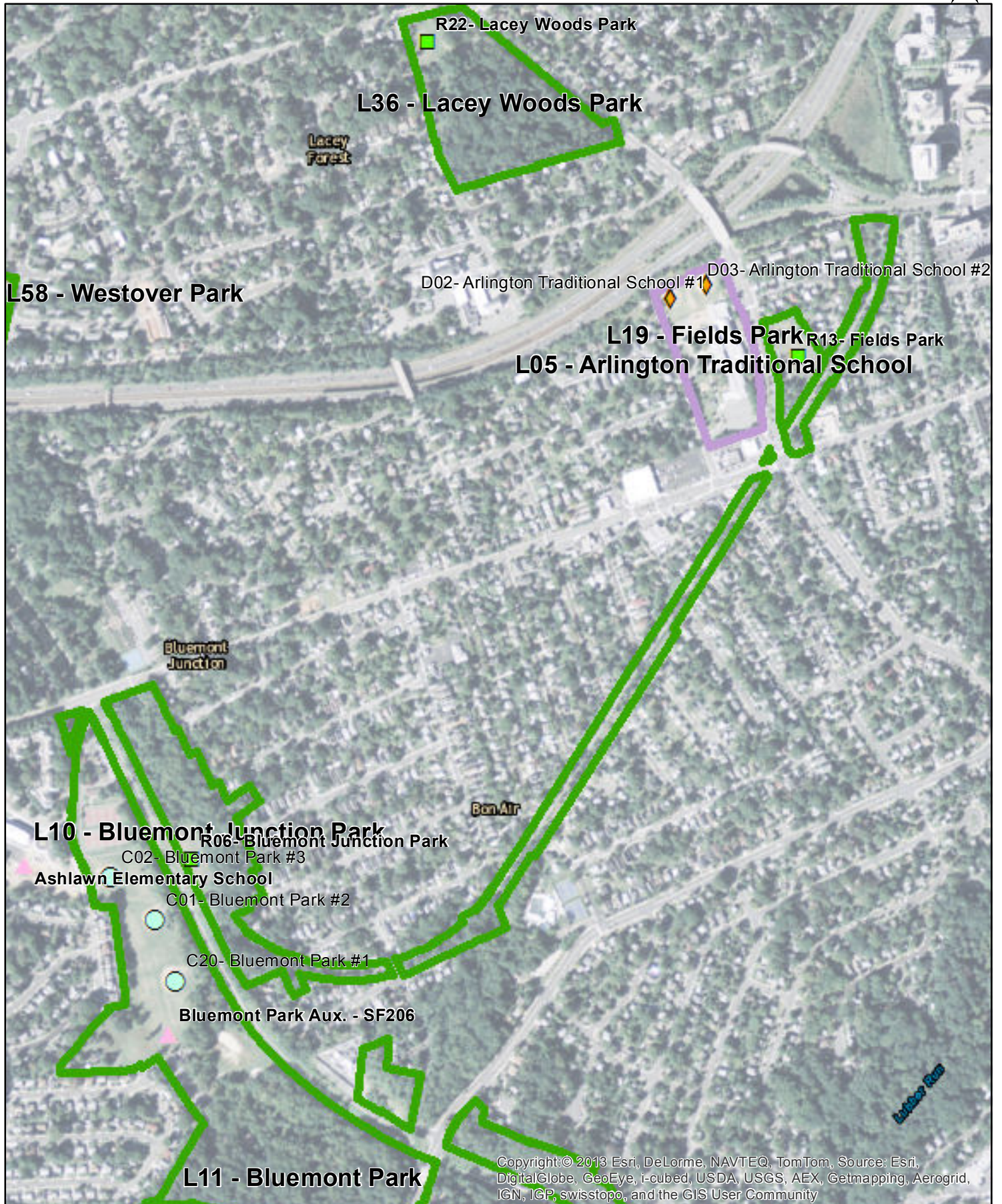
**THIS PAGE INTENTIONALLY LEFT BLANK**



**L10  
Bluemont Junction Park**

**Legend**

- Rectangle
- ◆ Diamond
- Combination Field
- ▲ Open Turf/Other Field (not assessed)
- Public Parks
- Private Open Space
- School







# Arlington County Fields Assessment Review

GIS ID            Location Name  
**L10**            **Bluemont Junction Park**

GRASP® Score	GRASP® Modifier Element
<b>0</b>	Restroom
<b>1</b>	Parking
<b>0</b>	Security/Egress Lighting
<b>1</b>	Shade Shelter
<b>0</b>	Drinking Water
<b>0</b>	Concessions
<b>0</b>	Playground
<b>0</b>	Maintenance Storage

ADA Red Flag  
*Limited access*

Comments  
*By caboose interp. longer walk from parking. Restroom available at adjacent Bluemont Park.*



# Arlington County Rectangle Fields

## L10 Bluemont Junction Park

GIS ID	Field Name	
<b>R06</b>	<b>Bluemont Junction Park</b>	
GRASP® Score	GRASP® Field Element	
<input type="text" value="2"/>	General Field Score	
<input type="text" value="2"/>	Turf	
<input type="text" value="0"/>	SynTurf	
<input type="text" value="1"/>	Irrigation	
<input type="text" value="0"/>	Lighting	ADA Red Flag <i>Limited access</i>
<input type="text" value="2"/>	Goals	
<input type="text" value="2"/>	Bleachers	
<input type="text" value="0"/>	Team Storage	Comments
<input type="text" value="1"/>	Run Out Area	<i>Drainage issues</i>
<input type="text" value="0"/>	Scoreboard	
<input type="text" value="0"/>	PressBox	
<input type="text" value="0"/>	WarmUp	
<input type="text" value="1"/>	General Field Drainage	

### Additional Information

Classification	County Parkland	Permits	Permit Only
Prim/Sec	Primary	Age Range	Youth
Grass	Bermuda	Community	No
Synthetic	No	Area Mgr	Lyndell Core
Irrigation	Yes	Sports Play	Soccer
Lighted	No	Regulation	Junior Soccer
Light Notes	N/A		
Amenities	Junior Goals, Benches, Bleachers, Outfield Fence		

**THIS PAGE INTENTIONALLY LEFT BLANK**



**L11  
Bluemont Park**

**Legend**

- Rectangle
- ◆ Diamond
- Combination Field
- ▲ Open Turf/Other Field (not assessed)
- Public Parks
- Private Open Space
- School





# Arlington County Fields Assessment Review

GIS ID      Location Name  
**L11**      **Bluemont Park**

GRASP®  
Score

GRASP®  
Modifier Element

<b>3</b>	Restroom
<b>1</b>	Parking
<b>0</b>	Security/Egress Lighting
<b>2</b>	Shade Shelter
<b>3</b>	Drinking Water
<b>0</b>	Concessions
<b>0</b>	Playground
<b>0</b>	Maintenance Storage

ADA Red Flag  
*Limited access*

Comments  
*Parking not convenient to fields*





# Arlington County Combination Fields

## L11 Bluemont Park

GIS ID            Field Name  
 C20              Bluemont Park #1

GRASP®	GRASP® Field Element	GRASP® Score	GRASP® Field Element
Diamond Scoring		Rectangle Scoring	
<input type="text" value="1"/>	General Field Score	<input type="text" value="2"/>	General Field Score
<input type="text" value="1"/>	Infield	<input type="text" value="2"/>	Turf
<input type="text" value="2"/>	Turf	<input type="text" value="0"/>	Irrigation
<input type="text" value="0"/>	Irrigation	<input type="text" value="0"/>	Lighting
<input type="text" value="0"/>	Lighting	<input type="text" value="0"/>	Bleacher
<input type="text" value="1"/>	Backstop	<input type="text" value="0"/>	Goals
<input type="text" value="1"/>	Dugouts	<input type="text" value="1"/>	Runout
<input type="text" value="0"/>	Fencing	<input type="text" value="0"/>	Scoreboard
<input type="text" value="0"/>	Warmup	<input type="text" value="0"/>	Press Box
<input type="text" value="0"/>	Bleachers	<input type="text" value="0"/>	Warmup Area
<input type="text" value="0"/>	Scoreboard	<input type="text" value="0"/>	Team Storage
<input type="text" value="0"/>	Pressbox		
<input type="text" value="0"/>	Team Storage		

ADA Red Flag

General Comments:

Not used programmed as a diamond

General Drainage

---

### Additional Information

Classification	County Parkland	Permits	Permit Takes Priority
Prim/Sec	Secondary	Age Range	Youth
Grass	Cool Season	Community	No
Irrigation	No	Area Mgr	Lyndell Core
Lighted	No	Sports Play	Baseball
Light Notes	N/A	Regulation	None
Amenities	Backstop, Benches, Restrooms		

## L11 Bluemont Park

GIS ID            Field Name  
C01                Bluemont Park #2

GRASP®	GRASP® Field Element	GRASP® Score	GRASP® Field Element
Diamond Scoring		Rectangle Scoring	
<input type="text" value="2"/>	General Field Score	<input type="text" value="2"/>	General Field Score
<input type="text" value="2"/>	Infield	<input type="text" value="2"/>	Turf
<input type="text" value="2"/>	Turf	<input type="text" value="0"/>	Irrigation
<input type="text" value="0"/>	Irrigation	<input type="text" value="0"/>	Lighting
<input type="text" value="0"/>	Lighting	<input type="text" value="0"/>	Bleacher
<input type="text" value="2"/>	Backstop	<input type="text" value="0"/>	Goals
<input type="text" value="1"/>	Dugouts	<input type="text" value="1"/>	Runout
<input type="text" value="0"/>	Fencing	<input type="text" value="0"/>	Scoreboard
<input type="text" value="0"/>	Warmup	<input type="text" value="0"/>	Press Box
<input type="text" value="1"/>	Bleachers	<input type="text" value="0"/>	Warmup Area
<input type="text" value="0"/>	Scoreboard	<input type="text" value="0"/>	Team Storage
<input type="text" value="0"/>	Pressbox		
<input type="text" value="0"/>	Team Storage		

ADA Red Flag  
*Limited access*

General Comments:

General Drainage

---

### Additional Information

Classification	County Parkland	Permits	Permit Takes Priority
Prim/Sec	Secondary	Age Range	Youth and Adult
Grass	Cool Season	Community	No
Irrigation	No	Area Mgr	Lyndell Core
Lighted	No	Sports Play	Baseball, Soccer, Lacrosse, Australian Footy, Ultimate Frisbee, Flag Football
Light Notes	N/A	Regulation	None
Amenities	Backstop, Benches, Restrooms		

## L11 Bluemont Park

GIS ID            Field Name  
C02                Bluemont Park #3

GRASP®	GRASP® Field Element	GRASP® Score	GRASP® Field Element
Diamond Scoring		Rectangle Scoring	
<input type="text" value="3"/>	General Field Score	<input type="text" value="2"/>	General Field Score
<input type="text" value="3"/>	Infield	<input type="text" value="2"/>	Turf
<input type="text" value="2"/>	Turf	<input type="text" value="0"/>	Irrigation
<input type="text" value="0"/>	Irrigation	<input type="text" value="0"/>	Lighting
<input type="text" value="0"/>	Lighting	<input type="text" value="0"/>	Bleacher
<input type="text" value="3"/>	Backstop	<input type="text" value="0"/>	Goals
<input type="text" value="3"/>	Dugouts	<input type="text" value="1"/>	Runout
<input type="text" value="2"/>	Fencing	<input type="text" value="0"/>	Scoreboard
<input type="text" value="2"/>	Warmup	<input type="text" value="0"/>	Press Box
<input type="text" value="2"/>	Bleachers	<input type="text" value="2"/>	Warmup Area
<input type="text" value="0"/>	Scoreboard	<input type="text" value="0"/>	Team Storage
<input type="text" value="0"/>	Pressbox		
<input type="text" value="0"/>	Team Storage		

ADA Red Flag

General Comments:

Field 3 scoring based on planned and funded upgrades

General Drainage

---


### Additional Information

Classification	County Parkland	Permits	Permit Takes Priority
Prim/Sec	Secondary	Age Range	Youth and Adult
Grass	Cool Season	Community	No
Irrigation	No	Area Mgr	Lyndell Core
Lighted	No	Sports Play	Baseball, Soccer, Lacrosse, Australian Footy, Ultimate Frisbee, Flag Football
Light Notes	N/A	Regulation	None
Amenities	Backstop, Benches, Restrooms		

**THIS PAGE INTENTIONALLY LEFT BLANK**

# L12 Charles A. Stewart Park

**Legend**

-  Rectangle
-  Diamond
-  Combination Field
-  Open Turf/Other Field (not assessed)
-  Public Parks
-  Private Open Space
-  School







# Arlington County Fields Assessment Review

GIS ID            Location Name  
**L12**            **Charles A. Stewart Park**

GRASP® Score	GRASP® Modifier Element
<b>1</b>	Restroom
<b>1</b>	Parking
<b>0</b>	Security/Egress Lighting
<b>2</b>	Shade Shelter
<b>0</b>	Drinking Water
<b>0</b>	Concessions
<b>3</b>	Playground
<b>0</b>	Maintenance Storage

ADA Red Flag

*Full access*

Comments

*Nice updated park . Street parking*



# Arlington County Rectangle Fields

## L12 Charles A. Stewart Park

GIS ID	Field Name	
<b>R08</b>	<b>Charles A. Stewart Park</b>	
GRASP® Score	GRASP® Field Element	
<input type="text" value="2"/>	General Field Score	
<input type="text" value="2"/>	Turf	
<input type="text" value="0"/>	SynTurf	
<input type="text" value="1"/>	Irrigation	
<input type="text" value="0"/>	Lighting	ADA Red Flag <i>Nice full ADA upgrades.</i>
<input type="text" value="2"/>	Goals	
<input type="text" value="0"/>	Bleachers	
<input type="text" value="0"/>	Team Storage	Comments
<input type="text" value="1"/>	Run Out Area	<i>New field in redesigned park. Pad but no bleachers yet</i>
<input type="text" value="0"/>	Scoreboard	
<input type="text" value="0"/>	PressBox	
<input type="text" value="0"/>	WarmUp	
<input type="text" value="3"/>	General Field Drainage	

### Additional Information

Classification	County Parkland	Permits	Permit Only
Prim/Sec	Primary	Age Range	Youth
Grass	Bermuda	Community	No
Synthetic	No	Area Mgr	Kevin Stalica
Irrigation	Yes	Sports Play	Soccer
Lighted	No	Regulation	Mini Soccer
Light Notes	N/A		
Amenities	Mini Goals		

**THIS PAGE INTENTIONALLY LEFT BLANK**

# L13 Claremont Elementary School

- Legend**
- Rectangle
  - Diamond
  - Combination Field
  - Open Turf/Other Field (not assessed)
  - Public Parks
  - Private Open Space
  - School







# Arlington County Fields Assessment Review

GIS ID            Location Name  
**L13**            **Claremont Elementary School**

GRASP®  
Score

GRASP®  
Modifier Element

<b>0</b>	Restroom
<b>2</b>	Parking
<b>0</b>	Security/Egress Lighting
<b>0</b>	Shade Shelter
<b>0</b>	Drinking Water
<b>0</b>	Concessions
<b>3</b>	Playground
<b>0</b>	Maintenance Storage

ADA Red Flag

Comments

## L13 Claremont Elementary School

GIS ID	Field Name	
<b>R09</b>	<b>Claremont Elementary School</b>	
GRASP® Score	GRASP® Field Element	
<b>1</b>	General Field Score	
<b>2</b>	Turf	
<b>0</b>	SynTurf	
<b>0</b>	Irrigation	ADA Red Flag
<b>0</b>	Lighting	
<b>0</b>	Goals	
<b>0</b>	Bleachers	
<b>0</b>	Team Storage	Comments
<b>-1</b>	Run Out Area	<i>Portable classroom. Does have practice backstop</i>
<b>0</b>	Scoreboard	
<b>0</b>	PressBox	
<b>0</b>	WarmUp	
<b>2</b>	General Field Drainage	



### Additional Information

Classification	Arlington Public Schools	Permits	Permit Takes Priority
Prim/Sec	Secondary	Age Range	Youth
Grass	Cool Season	Community	No
Synthetic	No	Area Mgr	Kevin Stalica
Irrigation	No	Sports Play	Soccer
Lighted	No	Regulation	None
Light Notes	N/A		
Amenities	None		

**THIS PAGE INTENTIONALLY LEFT BLANK**

# L14 Dawson Terrace Community Center

**Legend**

-  Rectangle
-  Diamond
-  Combination Field
-  Open Turf/Other Field (not assessed)
-  Public Parks
-  Private Open Space
-  School



**L14 - Dawson Terrace Community Center**

**R10- Dawson Terrace Community Center and Park**



# Arlington County Fields Assessment Review

GIS ID      Location Name  
**L14**      **Dawson Terrace Community Center**

GRASP®  
Score

GRASP®  
Modifier Element

<b>0</b>	Restroom
<b>2</b>	Parking
<b>0</b>	Security/Egress Lighting
<b>0</b>	Shade Shelter
<b>0</b>	Drinking Water
<b>0</b>	Concessions
<b>2</b>	Playground
<b>0</b>	Maintenance Storage

ADA Red Flag

Comments

*Community Center is not staffed so restroom availability is limited*





# Arlington County Rectangle Fields

## L14 Dawson Terrace Community Center


GIS ID	Field Name	
<b>R10</b>	<b>Dawson Terrace Community Center and Park</b>	
GRASP® Score	GRASP® Field Element	
<b>2</b>	General Field Score	
<b>2</b>	Turf	
<b>0</b>	SynTurf	
<b>0</b>	Irrigation	
<b>0</b>	Lighting	ADA Red Flag
<b>0</b>	Goals	
<b>0</b>	Bleachers	
<b>0</b>	Team Storage	Comments
<b>-1</b>	Run Out Area	<i>Limited size</i>
<b>0</b>	Scoreboard	
<b>0</b>	PressBox	
<b>0</b>	WarmUp	
<b>2</b>	General Field Drainage	

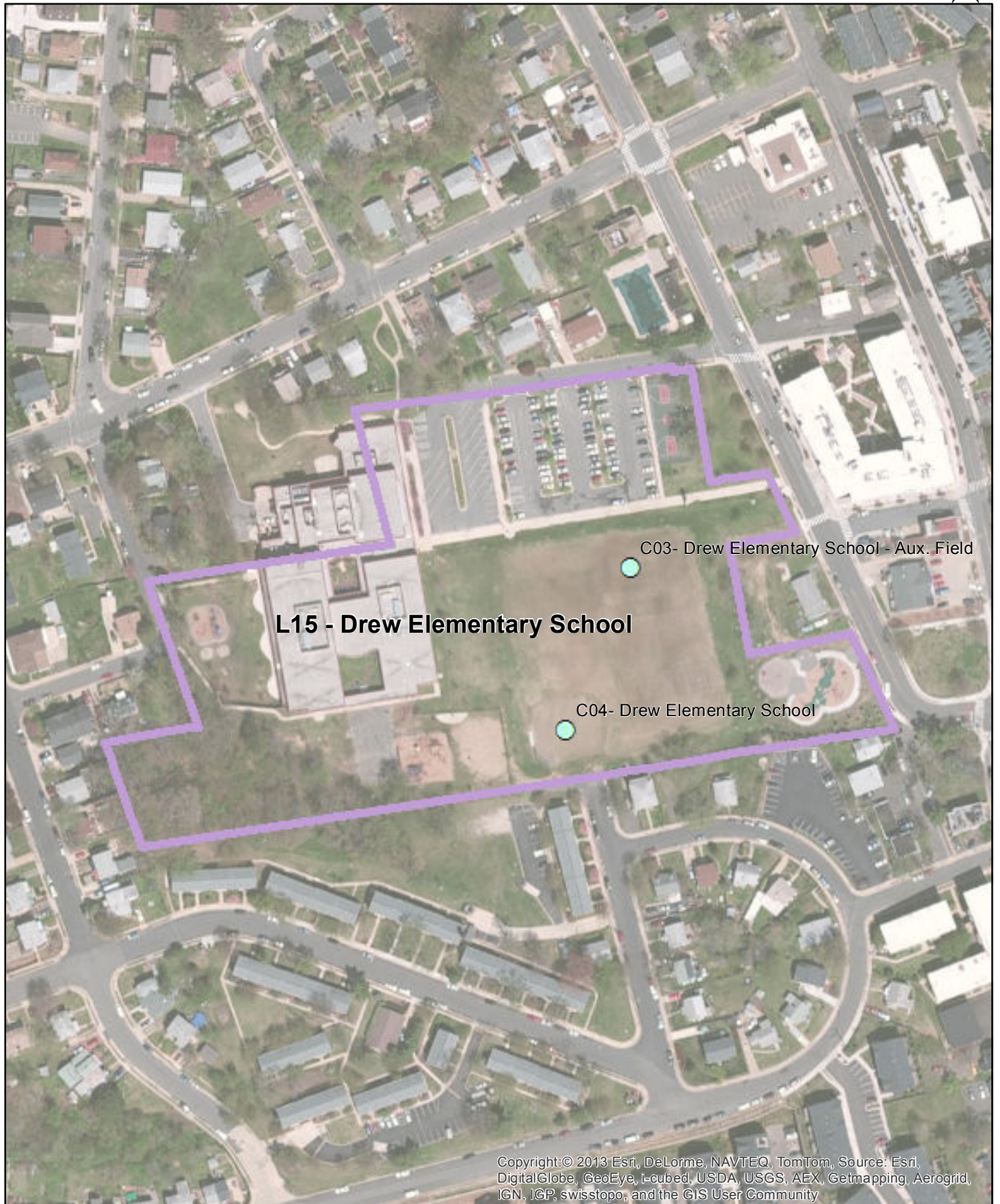
### Additional Information

Classification	County Parkland	Permits	Permit Takes Priority
Prim/Sec	Secondary	Age Range	Youth
Grass	Cool Season	Community	No
Synthetic	No	Area Mgr	Lyndell Core
Irrigation	No	Sports Play	Soccer
Lighted	No	Regulation	None
Light Notes	N/A		
Amenities	None		

**THIS PAGE INTENTIONALLY LEFT BLANK**

# L15 Drew Elementary School

- Legend**
-  Rectangle
  -  Diamond
  -  Combination Field
  -  Open Turf/Other Field (not assessed)
  -  Public Parks
  -  Private Open Space
  -  School





# Arlington County Fields Assessment Review

GIS ID            Location Name  
**L15**            **Drew Elementary School**

GRASP®  
Score

GRASP®  
Modifier Element

<b>0</b>	Restroom
<b>3</b>	Parking
<b>0</b>	Security/Egress Lighting
<b>0</b>	Shade Shelter
<b>0</b>	Drinking Water
<b>0</b>	Concessions
<b>3</b>	Playground
<b>0</b>	Maintenance Storage

ADA Red Flag  
*Limited access*

Comments



# Arlington County Combination Fields

## L15 Drew Elementary School

GIS ID: C03  
Field Name: Drew Elementary School - Aux. Field

GRASP® Field Element      GRASP® Score      GRASP® Field Element

**Diamond Scoring**

0	General Field Score
0	Infield
0	Turf
1	Irrigation
0	Lighting
0	Backstop
0	Dugouts
0	Fencing
0	Warmup
0	Bleachers
0	Scoreboard
0	Pressbox
0	Team Storage

**Rectangle Scoring**

2	General Field Score
2	Turf
1	Irrigation
0	Lighting
0	Bleacher
0	Goals
1	Runout
0	Scoreboard
0	Press Box
0	Warmup Area
0	Team Storage

ADA Red Flag  
*Limited access*

General Comments:

General Drainage

**Additional Information**

Classification	Arlington Public Schools	Permits	Permit Takes Priority
Prim/Sec	Primary	Age Range	Youth
Grass	Bermuda	Community	No
Irrigation	Yes	Area Mgr	Kasey Spriggs
Lighted	No	Sports Play	Baseball, Soccer
Light Notes	N/A	Regulation	None
Amenities	None		





# Arlington County Combination Fields

## L15 Drew Elementary School

GIS ID: C04  
Field Name: Drew Elementary School

GRASP®	GRASP® Field Element	GRASP® Score	GRASP® Field Element	
Diamond Scoring		Rectangle Scoring		
<input type="text" value="1"/>	General Field Score	<input type="text" value="2"/>	General Field Score	ADA Red Flag
<input type="text" value="1"/>	Infield	<input type="text" value="3"/>	Turf	
<input type="text" value="3"/>	Turf	<input type="text" value="1"/>	Irrigation	
<input type="text" value="1"/>	Irrigation	<input type="text" value="0"/>	Lighting	General Comments:
<input type="text" value="0"/>	Lighting	<input type="text" value="0"/>	Bleacher	
<input type="text" value="1"/>	Backstop	<input type="text" value="0"/>	Goals	
<input type="text" value="0"/>	Dugouts	<input type="text" value="1"/>	Runout	
<input type="text" value="0"/>	Fencing	<input type="text" value="0"/>	Scoreboard	
<input type="text" value="0"/>	Warmup	<input type="text" value="0"/>	Press Box	
<input type="text" value="1"/>	Bleachers	<input type="text" value="0"/>	Warmup Area	
<input type="text" value="0"/>	Scoreboard	<input type="text" value="0"/>	Team Storage	
<input type="text" value="0"/>	Pressbox	<input type="text" value="0"/>		
<input type="text" value="0"/>	Team Storage			
	<input type="text" value="2"/>	General Drainage		

---

### Additional Information

Classification	Arlington Public Schools	Permits	Permit Only
Prim/Sec	Primary	Age Range	Youth
Grass	Bermuda	Community	No
Irrigation	Yes	Area Mgr	Kasey Spriggs
Lighted	No	Sports Play	Baseball, Soccer
Light Notes	N/A	Regulation	None
Amenities	Backstop, Bleachers		

# L16 Eads Park

**Legend**

■ Rectangle

◆ Diamond

○ Combination Field

▲ Open Turf/Other Field (not assessed)

● Public Parks

● Private Open Space

● School





# Arlington County Fields Assessment Review

GIS ID      Location Name  
**L16**      **Eads Park**

GRASP®  
Score

GRASP®  
Modifier Element

1	Restroom
1	Parking
0	Security/Egress Lighting
2	Shade Shelter
0	Drinking Water
0	Concessions
1	Playground
0	Maintenance Storage

ADA Red Flag

Comments

*Youth fields. Portable restroom in season*

## L16 Eads Park

GIS ID                      Field Name

**R11**                        **Eads Park**

GRASP®                    GRASP®  
Score                        Field Element

<b>3</b>	General Field Score	
<b>3</b>	Turf	
<b>0</b>	SynTurf	
<b>1</b>	Irrigation	
<b>0</b>	Lighting	ADA Red Flag
<b>0</b>	Goals	
<b>2</b>	Bleachers	
<b>0</b>	Team Storage	Comments
<b>1</b>	Run Out Area	<i>Youth fields</i>
<b>0</b>	Scoreboard	
<b>0</b>	PressBox	
<b>1</b>	WarmUp	
<b>2</b>	General Field Drainage	

---

### Additional Information

Classification	County Parkland	Permits	Permit Only
Prim/Sec	Primary	Age Range	Youth
Grass	Bermuda	Community	No
Synthetic	No	Area Mgr	Kasey Spriggs
Irrigation	Yes	Sports Play	Soccer
Lighted	No	Regulation	None
Light Notes	N/A		
Amenities	None		

**THIS PAGE INTENTIONALLY LEFT BLANK**



# L18 Fairlington Community Center

**Legend**

■ Rectangle

◆ Diamond

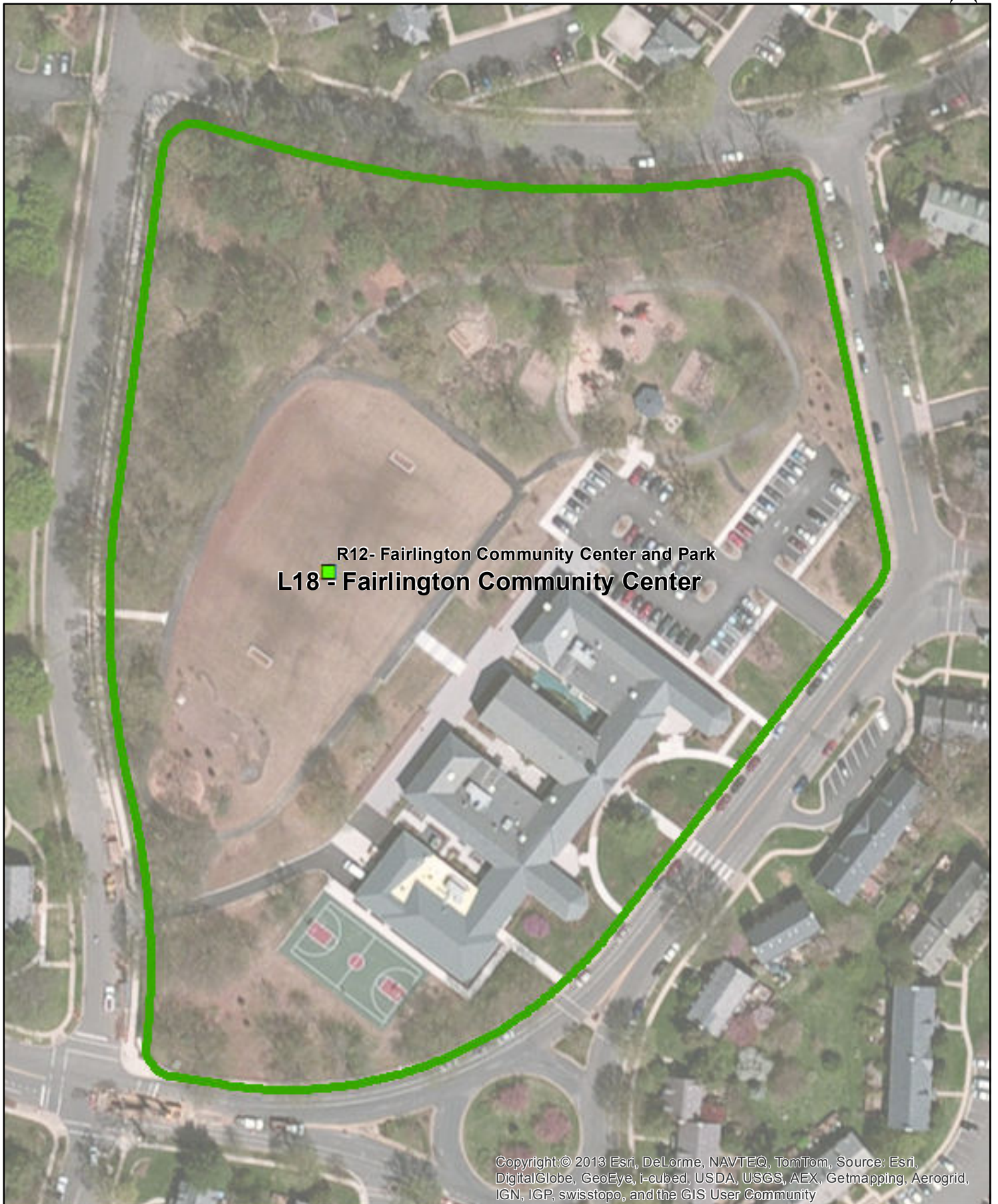
○ Combination Field

▲ Open Turf/Other Field (not assessed)

● Public Parks

● Private Open Space

● School





# Arlington County Fields Assessment Review

GIS ID      Location Name  
**L18**      **Fairlington Community Center**

GRASP®  
Score

GRASP®  
Modifier Element

<b>3</b>	Restroom
<b>2</b>	Parking
<b>2</b>	Security/Egress Lighting
<b>2</b>	Shade Shelter
<b>2</b>	Drinking Water
<b>0</b>	Concessions
<b>3</b>	Playground
<b>0</b>	Maintenance Storage

ADA Red Flag

Comments

*Restrooms available at Community Center*



# Arlington County Rectangle Fields

## L18 Fairlington Community Center

GIS ID: **R12** Field Name: **Fairlington Community Center and Park**

GRASP® Score: GRASP® Field Element

<b>2</b>	General Field Score	
<b>2</b>	Turf	
<b>0</b>	SynTurf	
<b>1</b>	Irrigation	ADA Red Flag
<b>0</b>	Lighting	
<b>2</b>	Goals	
<b>1</b>	Bleachers	
<b>0</b>	Team Storage	Comments
<b>1</b>	Run Out Area	<i>Generally a nice field with a few wear spots</i>
<b>0</b>	Scoreboard	
<b>0</b>	PressBox	
<b>0</b>	WarmUp	
<b>2</b>	General Field Drainage	

### Additional Information

Classification	County Parkland	Permits	Permit Only
Prim/Sec	Primary	Age Range	Youth
Grass	Bermuda	Community	No
Synthetic	No	Area Mgr	Kevin Stalica
Irrigation	Yes	Sports Play	Soccer
Lighted	No	Regulation	Junior Soccer
Light Notes	N/A		
Amenities	Junior Goals		

**THIS PAGE INTENTIONALLY LEFT BLANK**



# L19 Fields Park

**Legend**

■ Rectangle

◆ Diamond

○ Combination Field

▲ Open Turf/Other Field (not assessed)

● Public Parks

● Private Open Space

● School







# Arlington County Fields Assessment Review

GIS ID      Location Name  
**L19**      **Fields Park**

GRASP®  
Score

GRASP®  
Modifier Element

<b>1</b>	Restroom
<b>1</b>	Parking
<b>0</b>	Security/Egress Lighting
<b>0</b>	Shade Shelter
<b>0</b>	Drinking Water
<b>0</b>	Concessions
<b>0</b>	Playground
<b>0</b>	Maintenance Storage

ADA Red Flag

Comments

*Nice field but limited amenities and parking*

## L19 Fields Park

GIS ID                      Field Name

**R13**                        **Fields Park**

GRASP®                    GRASP®  
Score                        Field Element

2	General Field Score	
3	Turf	
0	SynTurf	
1	Irrigation	
0	Lighting	ADA Red Flag
2	Goals	
3	Bleachers	
0	Team Storage	Comments
1	Run Out Area	<i>Drainage issues on south end</i>
0	Scoreboard	
0	PressBox	
1	WarmUp	
1	General Field Drainage	

---


### Additional Information

Classification	County Parkland	Permits	Permit Only
Prim/Sec	Primary	Age Range	Youth
Grass	Bermuda	Community	No
Synthetic	No	Area Mgr	Lyndell Core
Irrigation	Yes	Sports Play	Soccer
Lighted	No	Regulation	Junior Soccer
Light Notes	N/A		
Amenities	Junior Goals, Bleacher		

**THIS PAGE INTENTIONALLY LEFT BLANK**

# L20 Fillmore Park

**Legend**

-  Rectangle
-  Diamond
-  Combination Field
-  Open Turf/Other Field (not assessed)
-  Public Parks
-  Private Open Space
-  School







# Arlington County Fields Assessment Review

GIS ID      Location Name  
**L20**      **Fillmore Park**

GRASP®  
Score

GRASP®  
Modifier Element

<b>0</b>	Restroom
<b>3</b>	Parking
<b>0</b>	Security/Egress Lighting
<b>0</b>	Shade Shelter
<b>0</b>	Drinking Water
<b>0</b>	Concessions
<b>3</b>	Playground
<b>0</b>	Maintenance Storage

ADA Red Flag  
*Limited access*

Comments





# Arlington County Combination Fields

## L20 Fillmore Park

GIS ID: C05  
Field Name: Fillmore Park

GRASP®	GRASP® Field Element	GRASP® Score	GRASP® Field Element	
Diamond Scoring		Rectangle Scoring		
<input type="text" value="2"/>	General Field Score	<input type="text" value="2"/>	General Field Score	ADA Red Flag
<input type="text" value="2"/>	Infield	<input type="text" value="2"/>	Turf	
<input type="text" value="2"/>	Turf	<input type="text" value="0"/>	Irrigation	
<input type="text" value="0"/>	Irrigation	<input type="text" value="0"/>	Lighting	General Comments:
<input type="text" value="0"/>	Lighting	<input type="text" value="2"/>	Bleacher	Limited access
<input type="text" value="2"/>	Backstop	<input type="text" value="0"/>	Goals	
<input type="text" value="2"/>	Dugouts	<input type="text" value="-1"/>	Runout	
<input type="text" value="2"/>	Fencing	<input type="text" value="0"/>	Scoreboard	
<input type="text" value="0"/>	Warmup	<input type="text" value="0"/>	Press Box	
<input type="text" value="2"/>	Bleachers	<input type="text" value="0"/>	Warmup Area	
<input type="text" value="0"/>	Scoreboard	<input type="text" value="0"/>	Team Storage	
<input type="text" value="0"/>	Pressbox			
<input type="text" value="0"/>	Team Storage			
<input type="text" value="2"/>	General Drainage			

---

### Additional Information

Classification	County Parkland	Permits	Permit Takes Priority
Prim/Sec	Secondary	Age Range	Youth
Grass	Cool Season	Community	No
Irrigation	No	Area Mgr	Lyndell Core
Lighted	No	Sports Play	Baseball
Light Notes	N/A	Regulation	None
Amenities	Backstop, Player Benches, School Restrooms Accessible from Outside		

**THIS PAGE INTENTIONALLY LEFT BLANK**

# L21 Fort Barnard Park

**Legend**

-  Rectangle
-  Diamond
-  Combination Field
-  Open Turf/Other Field (not assessed)
-  Public Parks
-  Private Open Space
-  School





# Arlington County Fields Assessment Review

GIS ID      Location Name  
**L21**      **Fort Barnard Park**

GRASP® Score	GRASP® Modifier Element
<b>0</b>	Restroom
<b>1</b>	Parking
<b>2</b>	Security/Egress Lighting
<b>2</b>	Shade Shelter
<b>0</b>	Drinking Water
<b>0</b>	Concessions
<b>3</b>	Playground
<b>0</b>	Maintenance Storage

ADA Red Flag  
*Limited access*

Comments

## L21 Fort Barnard Park

GIS ID Field Name

**D12 Fort Barnard Park**

GRASP® Field Element  
Score

2	General Field Score	
1	Infield Condition	
2	Turf Condition	
0	Irrigation	
0	Field Lighting	ADA Red Flag
1	Backstop	
0	Dugouts	
0	Fencing	
0	Warm Up (Batting Cage, Bullpen, etc)	General Comments
2	General Drainage	
0	Bleachers	
0	Scoreboard	
0	Press Box	
0	Team Storage	

---

### Additional Information

Classification	County Parkland	Permits	Permit Takes Priority
Pri/Sec	Secondary	Age Range	Youth and Adult
Grass	Cool Season	Community	No
Irrigation	No	Area Mgr	Kasey Spriggs
Lighted	No	Sports Play	Baseball
Light Notes	N/A	Regulation	None
Amenities	Backstop, Player Benches, School Restrooms Accessible from Outside		



**THIS PAGE INTENTIONALLY LEFT BLANK**

# L22 Fort Ethan Allen Park

**Legend**

-  Rectangle
-  Diamond
-  Combination Field
-  Open Turf/Other Field (not assessed)
-  Public Parks
-  Private Open Space
-  School





# Arlington County Fields Assessment Review

GIS ID      Location Name  
**L22**      **Fort Ethan Allen Park**

GRASP® Score	GRASP® Modifier Element
<b>3</b>	Restroom
<b>2</b>	Parking
<b>2</b>	Security/Egress Lighting
<b>0</b>	Shade Shelter
<b>2</b>	Drinking Water
<b>0</b>	Concessions
<b>2</b>	Playground
<b>0</b>	Maintenance Storage

ADA Red Flag  
*Limited access*

Comments  
*Historic site may limit improvements*

## L22 Fort Ethan Allen Park

GIS ID	Field Name	
<b>R14</b>	<b>Fort Ethan Allen Park &amp; Madison Center</b>	
GRASP® Score	GRASP® Field Element	
<b>2</b>	General Field Score	
<b>2</b>	Turf	
<b>0</b>	SynTurf	
<b>0</b>	Irrigation	
<b>0</b>	Lighting	ADA Red Flag <i>Limited access</i>
<b>0</b>	Goals	
<b>0</b>	Bleachers	
<b>0</b>	Team Storage	Comments
<b>1</b>	Run Out Area	<i>Field not well graded but appears drainage is adequate</i>
<b>0</b>	Scoreboard	
<b>0</b>	PressBox	
<b>1</b>	WarmUp	
<b>2</b>	General Field Drainage	

### Additional Information

Classification	County Parkland	Permits	Permit Takes Priority
Prim/Sec	Secondary	Age Range	Youth
Grass	Cool Season	Community	No
Synthetic	No	Area Mgr	Kevin Stalica
Irrigation	No	Sports Play	Soccer
Lighted	No	Regulation	None
Light Notes	N/A		
Amenities	None		

**THIS PAGE INTENTIONALLY LEFT BLANK**



# L23 Fort Scott Park

**Legend**

- Rectangle
- Diamond
- Combination Field
- Open Turf/Other Field (not assessed)
- Public Parks
- Private Open Space
- School





# Arlington County Fields Assessment Review

GIS ID            Location Name  
**L23**            **Fort Scott Park**

GRASP®  
Score

GRASP®  
Modifier Element

<b>3</b>	Restroom
<b>3</b>	Parking
<b>2</b>	Security/Egress Lighting
<b>2</b>	Shade Shelter
<b>2</b>	Drinking Water
<b>0</b>	Concessions
<b>2</b>	Playground
<b>0</b>	Maintenance Storage

ADA Red Flag  
*Limited access*

Comments

## L23 Fort Scott Park

GIS ID Field Name

**D13 Fort Scott Park**

GRASP® GRASP®  
Score Field Element

2	General Field Score	
2	Infield Condition	
2	Turf Condition	
0	Irrigation	
0	Field Lighting	ADA Red Flag
3	Backstop	Limited access
2	Dugouts	
2	Fencing	
0	Warm Up (Batting Cage, Bullpen, etc)	General Comments
2	General Drainage	Not complete fencing but new
0	Bleachers	
0	Scoreboard	
0	Press Box	
2	Team Storage	

---

### Additional Information

Classification	County Parkland	Permits	Permit Takes Priority
Pri/Sec	Secondary	Age Range	Youth
Grass	Cool Season	Community	No
Irrigation	No	Area Mgr	Kasey Spriggs
Lighted	No	Sports Play	Baseball
Light Notes	N/A	Regulation	None
Amenities	Backstop, Benches, Restroom		

**THIS PAGE INTENTIONALLY LEFT BLANK**



**L24  
Glebe School**

**Legend**

■ Rectangle

◆ Diamond

○ Combination Field

▲ Open Turf/Other Field (not assessed)

● Public Parks

● Private Open Space

● School







# Arlington County Fields Assessment Review

GIS ID      Location Name  
**L24**      **Glebe School**

GRASP®  
Score

GRASP®  
Modifier Element

<b>0</b>	Restroom
<b>3</b>	Parking
<b>0</b>	Security/Egress Lighting
<b>0</b>	Shade Shelter
<b>0</b>	Drinking Water
<b>0</b>	Concessions
<b>3</b>	Playground
<b>0</b>	Maintenance Storage

ADA Red Flag

Comments

## L24 Glebe School

GIS ID: **R15** Field Name: **Glebe Elementary School**

GRASP® Score: Field Element

<b>2</b>	General Field Score	
<b>3</b>	Turf	
<b>0</b>	SynTurf	
<b>1</b>	Irrigation	
<b>0</b>	Lighting	ADA Red Flag <i>Limited access</i>
<b>2</b>	Goals	
<b>0</b>	Bleachers	
<b>0</b>	Team Storage	Comments
<b>1</b>	Run Out Area	<i>Field is in rough shape. There is a backstop. It could be a combo field</i>
<b>0</b>	Scoreboard	
<b>0</b>	PressBox	
<b>0</b>	WarmUp	
<b>2</b>	General Field Drainage	

### Additional Information

Classification	Arlington Public Schools	Permits	Permit Takes Priority
Prim/Sec	Primary	Age Range	Youth
Grass	Bermuda	Community	No
Synthetic	No	Area Mgr	Kevin Stalica
Irrigation	Yes	Sports Play	Soccer
Lighted	No	Regulation	None
Light Notes	N/A		
Amenities	Junior Goals, Backstop		

**THIS PAGE INTENTIONALLY LEFT BLANK**

# L25 Greenbrier Park

**Legend**

- Rectangle
- Diamond
- Combination Field
- Open Turf/Other Field (not assessed)
- Public Parks
- Private Open Space
- School





# Arlington County Fields Assessment Review

GIS ID            Location Name  
**L25**            **Greenbrier Park**

GRASP®  
Score

GRASP®  
Modifier Element

<b>3</b>	Restroom
<b>3</b>	Parking
<b>2</b>	Security/Egress Lighting
<b>0</b>	Shade Shelter
<b>3</b>	Drinking Water
<b>3</b>	Concessions
<b>0</b>	Playground
<b>3</b>	Maintenance Storage

ADA Red Flag

Comments

*Nice facility. Limited shade*



## L25 Greenbrier Park

GIS ID	Field Name	
<b>R16</b>	<b>Greenbriar Park - Stadium Synthetic Field</b>	
GRASP® Score	GRASP® Field Element	
<b>3</b>	General Field Score	
<b>3</b>	Turf	
<b>3</b>	SynTurf	
<b>0</b>	Irrigation	
<b>3</b>	Lighting	ADA Red Flag
<b>3</b>	Goals	
<b>3</b>	Bleachers	
<b>0</b>	Team Storage	Comments
<b>1</b>	Run Out Area	<i>Synthetic to be new 2016</i>
<b>1</b>	Scoreboard	
<b>1</b>	PressBox	
<b>0</b>	WarmUp	
<b>3</b>	General Field Drainage	

### Additional Information

Classification	County Parkland	Permits	Permit Takes Priority
Prim/Sec	N/A - Synthetic	Age Range	Youth and Adult
Grass	Synthetic	Community	No
Synthetic	Yes	Area Mgr	Kevin Stalica
Irrigation	N/A - Synthetic	Sports Play	Soccer, Flag Football, Tackle Football, Lacrosse, Field Hockey, Ultimate Frisbee
Lighted	Yes	Regulation	Soccer, Field Hockey, Men & Women's Lacrosse, Football
Light Notes	Musco Dark Sky / 10:00pm or 10:30pm depending on time of year		
Amenities	Goals, Pressbox, Stadium Bleachers, Ticket Booth, Restroom, Concession Stand, Track, Player Benches, Visiting Side Bleachers		



# Arlington County Diamond Fields

## L25 Greenbrier Park

GIS ID                      Field Name  
**D14                      Greenbrier Park #1**

GRASP®                      GRASP®  
 Score                      Field Element

3	General Field Score	
3	Infield Condition	
3	Turf Condition	
1	Irrigation	
3	Field Lighting	ADA Red Flag
3	Backstop	
3	Dugouts	
3	Fencing	
3	Warm Up (Batting Cage, Bullpen, etc)	General Comments
3	General Drainage	
3	Bleachers	
1	Scoreboard	
1	Press Box	
3	Team Storage	

---

### Additional Information

Classification	County Parkland	Permits	Permit Only
Pri/Sec	Primary	Age Range	Youth
Grass	Bermuda	Community	No
Irrigation	Yes	Area Mgr	Kevin Stalica
Lighted	Yes	Sports Play	Softball
Light Notes	Musco Dark Sky / 10:00pm or 10:30pm depending on time of year	Regulation	Girls Softball
Amenities	Backstop, Covered Dugouts, Bullpens, Press Box, Storage, Scoreboard, Bleachers, Outfield Fence, Batting Cages, Restrooms		

## L25 Greenbrier Park

GIS ID Field Name

**D15 Greenbrier Park #2**

GRASP® GRASP®  
Score Field Element

2	General Field Score	
3	Infield Condition	
2	Turf Condition	
1	Irrigation	
3	Field Lighting	ADA Red Flag
2	Backstop	
3	Dugouts	
2	Fencing	
3	Warm Up (Batting Cage, Bullpen, etc)	General Comments
2	General Drainage	<i>The worst of 3 fields but still pretty good. Some drainage issues.</i>
2	Bleachers	<i>Incomplete fencing</i>
0	Scoreboard	
0	Press Box	
0	Team Storage	

---

### Additional Information

Classification	County Parkland	Permits	Permit Takes Priority
Pri/Sec	Primary	Age Range	Youth
Grass	Bermuda	Community	No
Irrigation	Yes	Area Mgr	Kevin Stalica
Lighted	Yes	Sports Play	Baseball, Softball
Light Notes	Musco Dark Sky / 10:00pm or 10:30pm depending on time of year	Regulation	None
Amenities	Backstop, Bleachers, Outfield Fence		

## L25 Greenbrier Park

GIS ID	Field Name	
<b>D16</b>	<b>Greenbrier Park #3</b>	
GRASP® Score	GRASP® Field Element	
<b>3</b>	General Field Score	
<b>3</b>	Infield Condition	
<b>3</b>	Turf Condition	
<b>1</b>	Irrigation	
<b>3</b>	Field Lighting	ADA Red Flag
<b>3</b>	Backstop	
<b>3</b>	Dugouts	
<b>3</b>	Fencing	
<b>1</b>	Warm Up (Batting Cage, Bullpen, etc)	General Comments
<b>3</b>	General Drainage	<i>Nice field. batting cages onsite but not immediately adjacent to this field</i>
<b>3</b>	Bleachers	
<b>1</b>	Scoreboard	
<b>1</b>	Press Box	
<b>3</b>	Team Storage	

---

### Additional Information

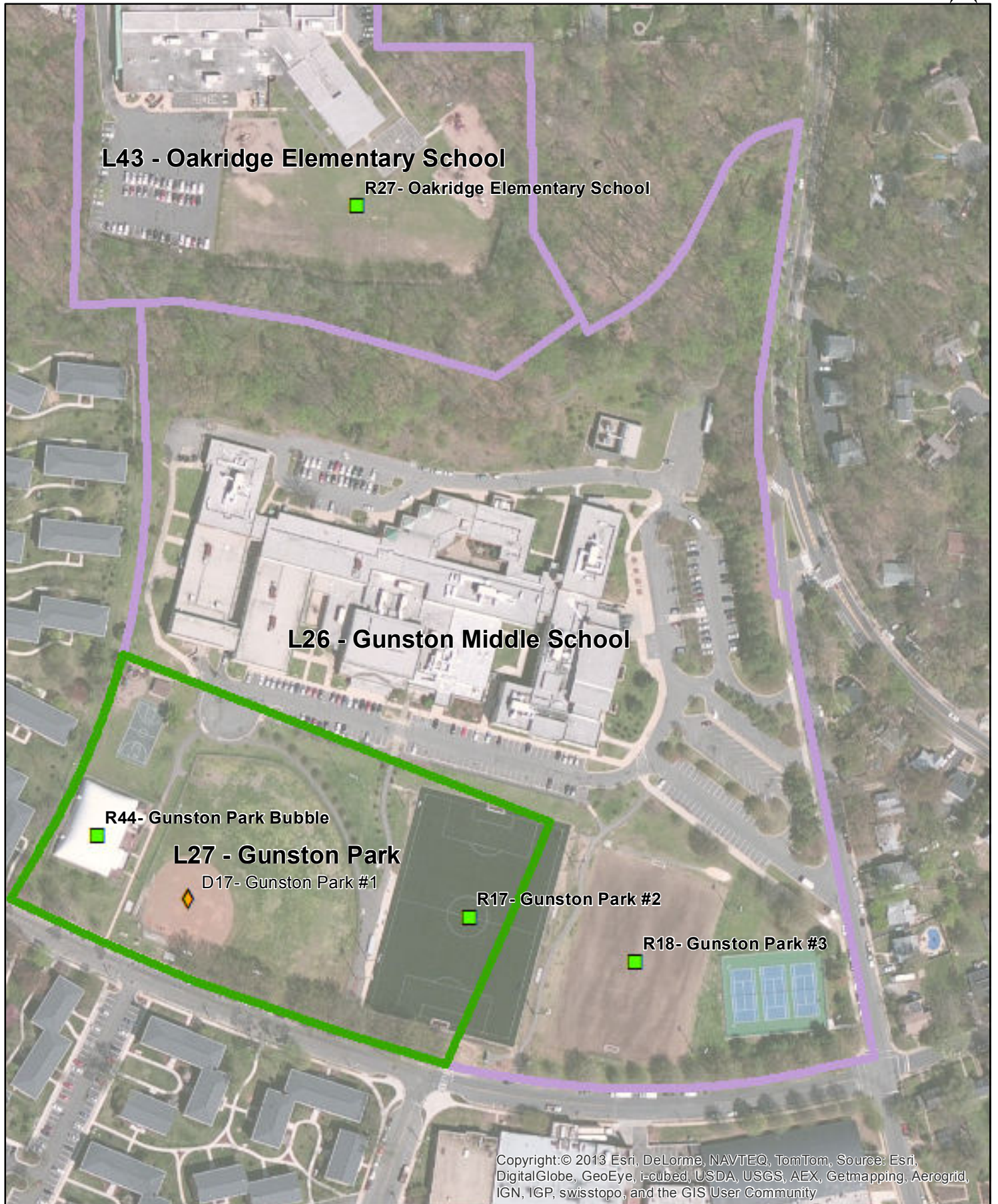
Classification	County Parkland	Permits	Permit Only
Pri/Sec	Primary	Age Range	Youth and Adult
Grass	Bermuda	Community	No
Irrigation	Yes	Area Mgr	Kevin Stalica
Lighted	Yes	Sports Play	Baseball
Light Notes	Musco Dark Sky / 10:00pm or 10:30pm depending on time of year	Regulation	90ft Baseball
Amenities	Backstop, Covered Dugouts, Bullpens, Press Box, Scoreboard, Bleachers, Outfield Fence, Batting Cages, Restrooms		



**L26  
Gunston Middle School**

**Legend**

- Rectangle
- ◆ Diamond
- Combination Field
- ▲ Open Turf/Other Field (not assessed)
- Public Parks
- Private Open Space
- School







# Arlington County Fields Assessment Review

GIS ID            Location Name  
**L26**            **Gunston Middle School**

GRASP®  
Score

GRASP®  
Modifier Element

**3**

Restroom

**3**

Parking

**0**

Security/Egress Lighting

**0**

Shade Shelter

**0**

Drinking Water

**0**

Concessions

**0**

Playground

**0**

Maintenance Storage

ADA Red Flag

Comments

# L27 Gunston Park

**Legend**

-  Rectangle
-  Diamond
-  Combination Field
-  Open Turf/Other Field (not assessed)
-  Public Parks
-  Private Open Space
-  School





# Arlington County Fields Assessment Review

GIS ID      Location Name  
**L27**      **Gunston Park**

GRASP®  
Score

GRASP®  
Modifier Element

<b>3</b>	Restroom
<b>3</b>	Parking
<b>2</b>	Security/Egress Lighting
<b>2</b>	Shade Shelter
<b>2</b>	Drinking Water
<b>0</b>	Concessions
<b>0</b>	Playground
<b>2</b>	Maintenance Storage

ADA Red Flag

Comments



# Arlington County Rectangle Fields

## L27 Gunston Park

GIS ID **R44** Field Name **Gunston Park Bubble**

GRASP® Score GRASP® Field Element

<b>2</b>	General Field Score	
<b>1</b>	Turf	
<b>3</b>	SynTurf	
<b>0</b>	Irrigation	ADA Red Flag
<b>1</b>	Lighting	
<b>2</b>	Goals	
<b>0</b>	Bleachers	
<b>0</b>	Team Storage	Comments
<b>-1</b>	Run Out Area	<i>Indoor field. Turf to be replaced. Lighting and ventilation inadequate. Staff to review and add additional information below</i>
<b>0</b>	Scoreboard	
<b>0</b>	PressBox	
<b>0</b>	WarmUp	
<b>3</b>	General Field Drainage	

### Additional Information

Classification	County Parkland	Permits
Prim/Sec		Age Range
Grass		Community
Synthetic	Yes	Area Mgr
Irrigation	N/A	Sports Play
Lighted		Regulation
Light Notes		
Amenities		

## L27 Gunston Park

GIS ID Field Name

**D17 Gunston Park #1**

GRASP® GRASP®  
Score Field Element

2	General Field Score	
2	Infield Condition	
2	Turf Condition	
0	Irrigation	
3	Field Lighting	ADA Red Flag
2	Backstop	<i>Limited access</i>
2	Dugouts	
2	Fencing	
0	Warm Up (Batting Cage, Bullpen, etc)	General Comments
2	General Drainage	<i>Dugouts not covered</i>
1	Bleachers	
0	Scoreboard	
0	Press Box	
2	Team Storage	

---

### Additional Information

Classification	County Parkland	Permits	Permit Only
Pri/Sec	Secondary	Age Range	Youth and Adult
Grass	Cool Season	Community	No
Irrigation	No	Area Mgr	Kasey Spriggs
Lighted	Yes	Sports Play	Softball
Light Notes	Musco Dark Sky / 11:00pm	Regulation	Adult Softball
Amenities	Backstop, Bleachers, Outfield Fence		





# Arlington County Rectangle Fields

## L27 Gunston Park

GIS ID	Field Name
<b>R17</b>	<b>Gunston Park #2</b>
GRASP® Score	GRASP® Field Element
<b>3</b>	General Field Score
<b>3</b>	Turf
<b>3</b>	SynTurf
<b>0</b>	Irrigation
<b>3</b>	Lighting
<b>2</b>	Goals
<b>2</b>	Bleachers
<b>2</b>	Team Storage
<b>1</b>	Run Out Area
<b>0</b>	Scoreboard
<b>0</b>	PressBox
<b>0</b>	WarmUp
<b>3</b>	General Field Drainage

ADA Red Flag

Comments

### Additional Information

Classification	County Parkland	Permits	Permit Takes Priority
Prim/Sec	N/A - Synthetic	Age Range	Youth and Adult
Grass	Synthetic	Community	No
Synthetic	Yes	Area Mgr	Kasey Spriggs
Irrigation	N/A - Synthetic	Sports Play	Soccer
Lighted	Yes	Regulation	Soccer
Light Notes	Musco Dark Sky / 11:00pm		
Amenities	Goals, Bleachers, Restrooms		



# Arlington County Rectangle Fields

## L26 Gunston Middle School

GIS ID: **R18** Field Name: **Gunston Park #3**

GRASP® Score: GRASP® Field Element

<b>1</b>	General Field Score	
<b>1</b>	Turf	
<b>0</b>	SynTurf	
<b>1</b>	Irrigation	ADA Red Flag
<b>3</b>	Lighting	
<b>2</b>	Goals	
<b>0</b>	Bleachers	
<b>0</b>	Team Storage	Comments
<b>1</b>	Run Out Area	<i>This field would be great for synthetic but on school land</i>
<b>0</b>	Scoreboard	
<b>0</b>	PressBox	
<b>0</b>	WarmUp	
<b>2</b>	General Field Drainage	

### Additional Information

Classification	Arlington Public Schools	Permits	Permit Takes Priority
Prim/Sec	Secondary	Age Range	Youth and Adult
Grass	Bermuda	Community	Community Drop-In with Limited Programming
Synthetic	No	Area Mgr	Kasey Spriggs
Irrigation	Yes	Sports Play	Soccer
Lighted	Yes	Regulation	None
Light Notes	Musco Dark Sky / 11:00pm		
Amenities	Goals, Restrooms		

**L28**  
**H.B. Woodlawn School**

**Legend**


 Rectangle

 Diamond

 Combination Field

 Open Turf/Other Field (not assessed)

 Public Parks

 Private Open Space

 School





# Arlington County Fields Assessment Review

GIS ID            Location Name  
**L28**            **H.B. Woodlawn School**

GRASP® Score	GRASP® Modifier Element
<b>1</b>	Restroom
<b>2</b>	Parking
<b>0</b>	Security/Egress Lighting
<b>0</b>	Shade Shelter
<b>0</b>	Drinking Water
<b>0</b>	Concessions
<b>1</b>	Playground
<b>0</b>	Maintenance Storage

ADA Red Flag  
*Limited access*

Comments



# Arlington County Rectangle Fields

## L28 H.B. Woodlawn School

GIS ID: **R19** Field Name: **HB Woodlawn Middle School**

GRASP® Score: GRASP® Field Element

<b>2</b>	General Field Score	
<b>2</b>	Turf	
<b>0</b>	SynTurf	
<b>1</b>	Irrigation	ADA Red Flag
<b>0</b>	Lighting	Limited access
<b>0</b>	Goals	
<b>0</b>	Bleachers	
<b>0</b>	Team Storage	Comments
<b>1</b>	Run Out Area	Field appears to have a few low spots
<b>0</b>	Scoreboard	
<b>0</b>	PressBox	
<b>0</b>	WarmUp	
<b>2</b>	General Field Drainage	

### Additional Information

Classification	Arlington Public Schools	Permits	Permit Takes Priority
Prim/Sec	Primary	Age Range	Youth and Adult
Grass	Cool Season	Community	No
Synthetic	No	Area Mgr	Kevin Stalica
Irrigation	Yes	Sports Play	Soccer, Ultimate Frisbee
Lighted	No	Regulation	None
Light Notes	N/A		
Amenities	Benches		



**THIS PAGE INTENTIONALLY LEFT BLANK**

# L29 High View Park

Legend


 Rectangle

 Diamond

 Combination Field

 Open Turf/Other Field (not assessed)

 Public Parks

 Private Open Space

 School





# Arlington County Fields Assessment Review

GIS ID            Location Name  
**L29**            **High View Park**

GRASP®  
Score

GRASP®  
Modifier Element

<b>3</b>	Restroom
<b>1</b>	Parking
<b>2</b>	Security/Egress Lighting
<b>0</b>	Shade Shelter
<b>2</b>	Drinking Water
<b>0</b>	Concessions
<b>3</b>	Playground
<b>0</b>	Maintenance Storage

ADA Red Flag

Comments

## L29 High View Park

GIS ID Field Name

**D18 High View Park**

GRASP® GRASP®  
Score Field Element

2	General Field Score	
2	Infield Condition	
2	Turf Condition	
0	Irrigation	
3	Field Lighting	ADA Red Flag
2	Backstop	
1	Dugouts	
0	Fencing	
2	Warm Up (Batting Cage, Bullpen, etc)	General Comments
3	General Drainage	<i>May actually be programmed as combo field. Upgrades to infield, new bermuda sod, addition of irrigation and new lighting system</i>
2	Bleachers	
0	Scoreboard	
0	Press Box	
0	Team Storage	

---

### Additional Information

Classification	County Parkland	Permits	Permit Takes Priority
Pri/Sec	Secondary	Age Range	Youth and Adult
Grass	Bermuda	Community	No
Irrigation	No	Area Mgr	Kevin Stalica
Lighted	Yes	Sports Play	Baseball, Softball, Soccer
Light Notes	Musco Dark Sky / 10:00pm	Regulation	None
Amenities	Backstop, Benches, Restrooms		

**THIS PAGE INTENTIONALLY LEFT BLANK**



# L30 Hoffman Boston Elementary School

**Legend**

- Rectangle
- ◆ Diamond
- Combination Field
- ▲ Open Turf/Other Field (not assessed)
- Public Parks
- Private Open Space
- School





# Arlington County Fields Assessment Review

GIS ID            Location Name  
**L30**            **Hoffman Boston Elementary School**

GRASP®  
Score

GRASP®  
Modifier Element

<b>1</b>	Restroom
<b>1</b>	Parking
<b>2</b>	Security/Egress Lighting
<b>0</b>	Shade Shelter
<b>1</b>	Drinking Water
<b>0</b>	Concessions
<b>1</b>	Playground
<b>0</b>	Maintenance Storage

ADA Red Flag  
*Limited access*

Comments



# Arlington County Rectangle Fields

## L30 Hoffman Boston Elementary School

GIS ID	Field Name	
<b>R07</b>	<b>Carver Community Center / Hoffman-Boston School</b>	
GRASP® Score	GRASP® Field Element	
<input type="text" value="1"/>	General Field Score	
<input type="text" value="2"/>	Turf	
<input type="text" value="0"/>	SynTurf	
<input type="text" value="0"/>	Irrigation	ADA Red Flag
<input type="text" value="0"/>	Lighting	
<input type="text" value="2"/>	Goals	
<input type="text" value="0"/>	Bleachers	
<input type="text" value="0"/>	Team Storage	Comments
<input type="text" value="1"/>	Run Out Area	<i>Nice elementary school field but has lots of rocks</i>
<input type="text" value="0"/>	Scoreboard	
<input type="text" value="0"/>	PressBox	
<input type="text" value="1"/>	WarmUp	
<input type="text" value="2"/>	General Field Drainage	

### Additional Information

Classification	Arlington Public Schools	Permits	???
Prim/Sec	???	Age Range	???
Grass	Cool Season	Community	???
Synthetic	No	Area Mgr	Kasey Spriggs
Irrigation	No	Sports Play	???
Lighted	No	Regulation	None
Light Notes	N/A		
Amenities	None		

**THIS PAGE INTENTIONALLY LEFT BLANK**



# L31 Jamestown Park

**Legend**

■ Rectangle

◆ Diamond

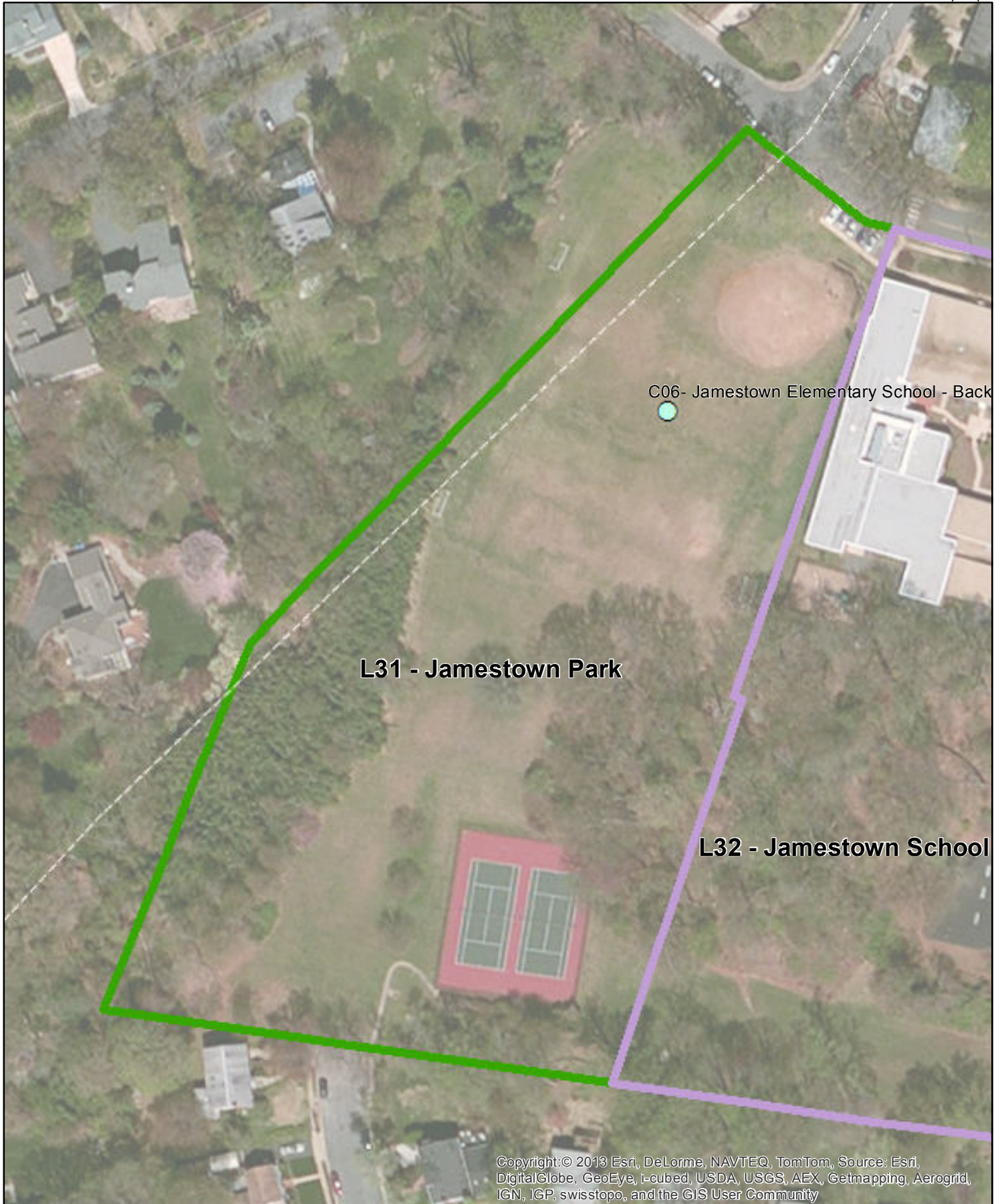
○ Combination Field

▲ Open Turf/Other Field (not assessed)

● Public Parks

● Private Open Space

● School







# Arlington County Fields Assessment Review

GIS ID      Location Name  
**L31**      **Jamestown Park**

GRASP®  
Score

GRASP®  
Modifier Element

1	Restroom
2	Parking
0	Security/Egress Lighting
0	Shade Shelter
0	Drinking Water
0	Concessions
1	Playground
0	Maintenance Storage

ADA Red Flag  
*Limited access*

Comments  
*Potential for upgrades at this park? Port-o-let onsite. Playground at adjacent school*



# Arlington County Combination Fields

## L31 Jamestown Park

GIS ID: C06  
Field Name: Jamestown Elementary School - Back

GRASP®	GRASP® Field Element	GRASP® Score	GRASP® Field Element
Diamond Scoring		Rectangle Scoring	
<input type="text" value="1"/>	General Field Score	<input type="text" value="2"/>	General Field Score
<input type="text" value="1"/>	Infield	<input type="text" value="2"/>	Turf
<input type="text" value="2"/>	Turf	<input type="text" value="0"/>	Irrigation
<input type="text" value="0"/>	Irrigation	<input type="text" value="0"/>	Lighting
<input type="text" value="0"/>	Lighting	<input type="text" value="0"/>	Bleacher
<input type="text" value="1"/>	Backstop	<input type="text" value="2"/>	Goals
<input type="text" value="1"/>	Dugouts	<input type="text" value="1"/>	Runout
<input type="text" value="0"/>	Fencing	<input type="text" value="0"/>	Scoreboard
<input type="text" value="0"/>	Warmup	<input type="text" value="0"/>	Press Box
<input type="text" value="0"/>	Bleachers	<input type="text" value="0"/>	Warmup Area
<input type="text" value="0"/>	Scoreboard	<input type="text" value="0"/>	Team Storage
<input type="text" value="0"/>	Pressbox	<input type="text" value="0"/>	
<input type="text" value="0"/>	Team Storage		

ADA Red Flag  
*Limited access*

General Comments:  
Appears to be some drainage low spots in turf area. Lots of room here. Could be upgraded but limited site parking. Infield is currently very grassy/weedy

General Drainage

---

### Additional Information

Classification	County Parkland	Permits	Permit Takes Priority
Prim/Sec	Secondary	Age Range	Youth
Grass	Cool Season	Community	No
Irrigation	No	Area Mgr	Kevin Stalica
Lighted	No	Sports Play	Baseball, Soccer
Light Notes	N/A	Regulation	None
Amenities	Backstop, Goals		

**THIS PAGE INTENTIONALLY LEFT BLANK**

# L32 Jamestown School

**Legend**

- Rectangle
- ◆ Diamond
- Combination Field
- ▲ Open Turf/Other Field (not assessed)
- Public Parks
- Private Open Space
- School





# Arlington County Fields Assessment Review

GIS ID            Location Name  
**L32**            **Jamestown School**

GRASP®  
Score

GRASP®  
Modifier Element

<b>0</b>	Restroom
<b>1</b>	Parking
<b>0</b>	Security/Egress Lighting
<b>0</b>	Shade Shelter
<b>0</b>	Drinking Water
<b>0</b>	Concessions
<b>2</b>	Playground
<b>0</b>	Maintenance Storage

ADA Red Flag

Comments





# Arlington County Combination Fields

## L32 Jamestown School

GIS ID: C07  
Field Name: Jamestown Elementary School - Front

GRASP®	GRASP® Field Element	GRASP® Score	GRASP® Field Element
Diamond Scoring		Rectangle Scoring	
2	General Field Score	1	General Field Score
2	Infield	2	Turf
2	Turf	0	Irrigation
0	Irrigation	0	Lighting
0	Lighting	0	Bleacher
1	Backstop	0	Goals
1	Dugouts	-1	Runout
1	Fencing	0	Scoreboard
0	Warmup	0	Press Box
1	Bleachers	0	Warmup Area
0	Scoreboard	0	Team Storage
0	Pressbox		
2	Team Storage		

ADA Red Flag  
*Limited access*

General Comments:  
Limited by portable classroom. Site fencing also encloses field

2 General Drainage

---

### Additional Information

Classification	Arlington Public Schools	Permits	Permit Takes Priority
Prim/Sec	Secondary	Age Range	Youth
Grass	Cool Season	Community	No
Irrigation	No	Area Mgr	Kevin Stalica
Lighted	No	Sports Play	Baseball, Soccer
Light Notes	N/A	Regulation	None
Amenities	Backstop, Benches, Outfield Fence		

**THIS PAGE INTENTIONALLY LEFT BLANK**

# L33 Jennie Dean Park

**Legend**

- Rectangle
- Diamond
- Combination Field
- Open Turf/Other Field (not assessed)
- Public Parks
- Private Open Space
- School





# Arlington County Fields Assessment Review

GIS ID            Location Name  
**L33**            **Jennie Dean Park**

GRASP® Score	GRASP® Modifier Element
<b>2</b>	Restroom
<b>1</b>	Parking
<b>2</b>	Security/Egress Lighting
<b>2</b>	Shade Shelter
<b>1</b>	Drinking Water
<b>0</b>	Concessions
<b>2</b>	Playground
<b>2</b>	Maintenance Storage

ADA Red Flag  
*Limited access*

Comments  
*Park due to be masterplanned*

## L33 Jennie Dean Park

GIS ID                      Field Name  
**D19**                        **Jennie Dean Park #1**

GRASP®                    GRASP®  
 Score                        Field Element

2	General Field Score	
2	Infield Condition	
2	Turf Condition	
0	Irrigation	
2	Field Lighting	ADA Red Flag
2	Backstop	<i>Limited access</i>
3	Dugouts	
2	Fencing	
0	Warm Up (Batting Cage, Bullpen, etc)	General Comments
2	General Drainage	
2	Bleachers	
0	Scoreboard	
1	Press Box	
1	Team Storage	

### Additional Information

Classification	County Parkland	Permits	Permit Only
Pri/Sec	Secondary	Age Range	Youth and Adult
Grass	Cool Season	Community	No
Irrigation	No	Area Mgr	Kevin Stalica
Lighted	Yes	Sports Play	Softball
Light Notes	Traditional Manual / 11:00pm	Regulation	Adult Softball
Amenities	Backstop, Covered Dugouts, Pressbox, Storage, Player Benches, Bleachers, Outfield Fence, Restrooms		





# Arlington County Diamond Fields

## L33 Jennie Dean Park

GIS ID	Field Name	
<b>D20</b>	<b>Jennie Dean Park #2</b>	
GRASP® Score	GRASP® Field Element	
<b>2</b>	General Field Score	
<b>2</b>	Infield Condition	
<b>2</b>	Turf Condition	
<b>0</b>	Irrigation	
<b>2</b>	Field Lighting	ADA Red Flag
<b>2</b>	Backstop	<i>Limited access</i>
<b>3</b>	Dugouts	
<b>2</b>	Fencing	
<b>0</b>	Warm Up (Batting Cage, Bullpen, etc)	General Comments
<b>2</b>	General Drainage	<i>Park to be master planned</i>
<b>2</b>	Bleachers	
<b>0</b>	Scoreboard	
<b>1</b>	Press Box	
<b>0</b>	Team Storage	

---

### Additional Information

Classification	County Parkland	Permits	Permit Only
Pri/Sec	Secondary	Age Range	Youth
Grass	Cool Season	Community	No
Irrigation	No	Area Mgr	Kevin Stalica
Lighted	Yes	Sports Play	Softball, Baseball
Light Notes	Traditional Manual / 11:00pm	Regulation	46/60 or 50/70 Baseball
Amenities	Backstop, Dugouts, Player Benches, Bleachers, Outfield Fence, Restrooms		

**L34  
Kenmore Middle School**

- Legend**
- Rectangle
  - ◆ Diamond
  - Combination Field
  - ▲ Open Turf/Other Field (not assessed)
  - Public Parks
  - Private Open Space
  - School





# Arlington County Fields Assessment Review

GIS ID            Location Name  
**L34**            **Kenmore Middle School**

GRASP®  
Score

GRASP®  
Modifier Element

<b>3</b>	Restroom
<b>2</b>	Parking
<b>1</b>	Security/Egress Lighting
<b>0</b>	Shade Shelter
<b>2</b>	Drinking Water
<b>0</b>	Concessions
<b>0</b>	Playground
<b>3</b>	Maintenance Storage

ADA Red Flag

Comments

*Site has potential but currently barely functional. Could be upgraded to synthetic and become great facility*



# Arlington County Combination Fields

## L34 Kenmore Middle School

GIS ID            Field Name  
 C08              Kenmore Middle School #1

GRASP®        GRASP®            GRASP®        GRASP®  
 Field Element    Score            Field Element

**Diamond Scoring**

1	General Field Score
1	Infield
1	Turf
0	Irrigation
1	Lighting
1	Backstop
1	Dugouts
1	Fencing
0	Warmup
0	Bleachers
0	Scoreboard
0	Pressbox
0	Team Storage

**Rectangle Scoring**

1	General Field Score
1	Turf
0	Irrigation
1	Lighting
0	Bleacher
0	Goals
1	Runout
0	Scoreboard
0	Press Box
0	Warmup Area
0	Team Storage

ADA Red Flag

General Comments:  
 Fields are in really poor shape

General Drainage

**Additional Information**

Classification	Arlington Public Schools	Permits	Permit Takes Priority
Prim/Sec	Secondary	Age Range	Youth
Grass	Cool Season	Community	No
Irrigation	No	Area Mgr	Kevin Stalica
Lighted	Yes	Sports Play	Baseball, Soccer
Light Notes	Traditional Manual / 11:00pm	Regulation	None
Amenities	Backstop, Benches, Outfield Fence (In Spring & Summer Only), Restrooms		



# Arlington County Rectangle Fields

## L34 Kenmore Middle School

GIS ID: **R20** Field Name: **Kenmore Middle School #2**

GRASP® Score: GRASP® Field Element

1	General Field Score	
0	Turf	
0	SynTurf	
1	Irrigation	ADA Red Flag
2	Lighting	
2	Goals	
1	Bleachers	
0	Team Storage	Comments
1	Run Out Area	<i>Field in very poor condition</i>
0	Scoreboard	
0	PressBox	
1	WarmUp	
1	General Field Drainage	

### Additional Information

Classification	Arlington Public Schools	Permits	Permit Only
Prim/Sec	Primary	Age Range	Youth and Adult
Grass	Bermuda	Community	No
Synthetic	No	Area Mgr	Kevin Stalica
Irrigation	Yes	Sports Play	Soccer, Lacrosse, Tackle Football
Lighted	Yes	Regulation	Soccer
Light Notes	Traditional Manual / 11:00pm		
Amenities	Goals, Benches, Restrooms		



## L34 Kenmore Middle School

GIS ID	Field Name	GRASP® Score	GRASP® Field Element	
<b>D21</b>	<b>Kenmore Middle School #3</b>			
<b>2</b>	General Field Score			
<b>1</b>	Infield Condition			
<b>2</b>	Turf Condition			
<b>1</b>	Irrigation			
<b>0</b>	Field Lighting			ADA Red Flag
<b>2</b>	Backstop			Limited access
<b>1</b>	Dugouts			
<b>1</b>	Fencing			
<b>0</b>	Warm Up (Batting Cage, Bullpen, etc)			General Comments
<b>2</b>	General Drainage			Rough field. No benches in dugouts. Incomplete fencing
<b>0</b>	Bleachers			
<b>0</b>	Scoreboard			
<b>0</b>	Press Box			
<b>0</b>	Team Storage			

---

### Additional Information

Classification	Arlington Public Schools	Permits	Permit Takes Priority
Pri/Sec	Secondary	Age Range	Youth
Grass	Cool Season	Community	No
Irrigation	No	Area Mgr	Kevin Stalica
Lighted	No	Sports Play	Baseball
Light Notes	N/A	Regulation	None
Amenities	Backstop, Benches, Restrooms		

**THIS PAGE INTENTIONALLY LEFT BLANK**

# L35 Key Elementary School

Legend

■ Rectangle

◆ Diamond

○ Combination Field

▲ Open Turf/Other Field (not assessed)

● Public Parks

● Private Open Space

● School





# Arlington County Fields Assessment Review

GIS ID            Location Name  
**L35**            **Key Elementary School**

GRASP®  
Score

GRASP®  
Modifier Element

<b>0</b>	Restroom
<b>2</b>	Parking
<b>0</b>	Security/Egress Lighting
<b>0</b>	Shade Shelter
<b>0</b>	Drinking Water
<b>0</b>	Concessions
<b>2</b>	Playground
<b>0</b>	Maintenance Storage

ADA Red Flag

Comments



# Arlington County Rectangle Fields

## L35 Key Elementary School

GIS ID	Field Name
<b>R21</b>	<b>Key Elementary School</b>
GRASP® Score	GRASP® Field Element
<b>2</b>	General Field Score
<b>2</b>	Turf
<b>0</b>	SynTurf
<b>1</b>	Irrigation
<b>0</b>	Lighting
<b>0</b>	Goals
<b>0</b>	Bleachers
<b>0</b>	Team Storage
<b>1</b>	Run Out Area
<b>0</b>	Scoreboard
<b>0</b>	PressBox
<b>0</b>	WarmUp
<b>2</b>	General Field Drainage

ADA Red Flag

Comments

*Nice looking field*

### Additional Information




Classification	Arlington Public Schools	Permits	Permit Takes Priority
Prim/Sec	Secondary	Age Range	Youth
Grass	Cool Season	Community	No
Synthetic	No	Area Mgr	Lyndell Core
Irrigation	Yes	Sports Play	Soccer
Lighted	No	Regulation	None
Light Notes	N/A		
Amenities	None		



**THIS PAGE INTENTIONALLY LEFT BLANK**

# L36 Lacey Woods Park

**Legend**

-  Rectangle
-  Diamond
-  Combination Field
-  Open Turf/Other Field (not assessed)
-  Public Parks
-  Private Open Space
-  School





# Arlington County Fields Assessment Review

GIS ID            Location Name  
**L36**            **Lacey Woods Park**

GRASP®  
Score

GRASP®  
Modifier Element

<b>3</b>	Restroom
<b>1</b>	Parking
<b>0</b>	Security/Egress Lighting
<b>2</b>	Shade Shelter
<b>2</b>	Drinking Water
<b>0</b>	Concessions
<b>3</b>	Playground
<b>0</b>	Maintenance Storage

ADA Red Flag  
*Limited access*

Comments

## L36 Lacey Woods Park

GIS ID: **R22** Field Name: **Lacey Woods Park**

GRASP® Score: Field Element

1	General Field Score	
2	Turf	
0	SynTurf	
0	Irrigation	ADA Red Flag
0	Lighting	Limited access
0	Goals	
0	Bleachers	
0	Team Storage	Comments
1	Run Out Area	
0	Scoreboard	
0	PressBox	
1	WarmUp	
1	General Field Drainage	

### Additional Information

Classification	County Parkland	Permits	Permit Takes Priority
Prim/Sec	Secondary	Age Range	Youth
Grass	Cool Season	Community	No
Synthetic	No	Area Mgr	Kevin Stalica
Irrigation	No	Sports Play	Soccer
Lighted	No	Regulation	None
Light Notes	N/A		
Amenities	Restroom		

**THIS PAGE INTENTIONALLY LEFT BLANK**



# L37 Lee Community Center

**Legend**

- Rectangle
- Diamond
- Combination Field
- Open Turf/Other Field (not assessed)
- Public Parks
- Private Open Space
- School





# Arlington County Fields Assessment Review

GIS ID            Location Name  
**L37**            **Lee Community Center**

GRASP® Score	GRASP® Modifier Element
<b>3</b>	Restroom
<b>2</b>	Parking
<b>2</b>	Security/Egress Lighting
<b>0</b>	Shade Shelter
<b>2</b>	Drinking Water
<b>0</b>	Concessions
<b>2</b>	Playground
<b>0</b>	Maintenance Storage

ADA Red Flag  
*Limited access*

Comments  
*Restroom available at Community Center*

## L37 Lee Community Center

GIS ID                      Field Name

**D22**                      **Lee Community Center and Park**

GRASP®                      GRASP®  
Score                      Field Element

1	General Field Score	
1	Infield Condition	
2	Turf Condition	
0	Irrigation	
0	Field Lighting	ADA Red Flag
1	Backstop	<i>Limited access</i>
1	Dugouts	
1	Fencing	
0	Warm Up (Batting Cage, Bullpen, etc)	General Comments
2	General Drainage	<i>Small field at community center park. Kind of rough shape</i>
0	Bleachers	
0	Scoreboard	
0	Press Box	
0	Team Storage	

---

### Additional Information

Classification	County Parkland	Permits	Permit Takes Priority
Pri/Sec	Secondary	Age Range	Youth
Grass	Bermuda	Community	No
Irrigation	Yes	Area Mgr	Kevin Stalica
Lighted	No	Sports Play	Baseball
Light Notes	N/A	Regulation	None
Amenities	Backstop, Benches		

**THIS PAGE INTENTIONALLY LEFT BLANK**



# L38 Long Bridge Park

**Legend**

- Rectangle
- Diamond
- Combination Field
- Open Turf/Other Field (not assessed)
- Public Parks
- Private Open Space
- School







# Arlington County Fields Assessment Review

GIS ID            Location Name  
**L38**            **Long Bridge Park**

GRASP® Score	GRASP® Modifier Element
<b>3</b>	Restroom
<b>1</b>	Parking
<b>2</b>	Security/Egress Lighting
<b>0</b>	Shade Shelter
<b>3</b>	Drinking Water
<b>1</b>	Concessions
<b>3</b>	Playground
<b>2</b>	Maintenance Storage

ADA Red Flag

Comments

*Lack of parking limits this facility. Concessions are vending machines and limited shade on exposed site. Playground added recently*

## L38 Long Bridge Park

GIS ID	Field Name	
<b>R23</b>	<b>Long Bridge Park Synthetic Field #1</b>	
GRASP® Score	GRASP® Field Element	
<b>3</b>	General Field Score	
<b>3</b>	Turf	
<b>3</b>	SynTurf	
<b>0</b>	Irrigation	
<b>3</b>	Lighting	ADA Red Flag
<b>2</b>	Goals	
<b>0</b>	Bleachers	
<b>1</b>	Team Storage	Comments
<b>1</b>	Run Out Area	
<b>1</b>	Scoreboard	
<b>0</b>	PressBox	
<b>0</b>	WarmUp	
<b>3</b>	General Field Drainage	

### Additional Information

Classification	County Parkland	Permits	Permit Takes Priority
Prim/Sec	N/A - Synthetic	Age Range	Youth and Adult
Grass	Synthetic	Community	No
Synthetic	Yes	Area Mgr	Kasey Spriggs
Irrigation	N/A - Synthetic	Sports Play	Flag Football, Tackle Football, Lacrosse, Soccer, Kickball
Lighted	Yes	Regulation	Soccer, Men's & Women's Lacrosse
Light Notes	Musco Dark Sky / 11:00pm		
Amenities	Goals, Benches, Storage, Restrooms		

## L38 Long Bridge Park

GIS ID: **R24** Field Name: **Long Bridge Park Synthetic Field #3**

GRASP® Score: Field Element

<b>3</b>	General Field Score	
<b>3</b>	Turf	
<b>3</b>	SynTurf	
<b>0</b>	Irrigation	ADA Red Flag
<b>3</b>	Lighting	
<b>2</b>	Goals	
<b>0</b>	Bleachers	
<b>1</b>	Team Storage	Comments
<b>1</b>	Run Out Area	
<b>1</b>	Scoreboard	
<b>0</b>	PressBox	
<b>0</b>	WarmUp	
<b>3</b>	General Field Drainage	

### Additional Information

Classification	County Parkland	Permits	Permit Takes Priority
Prim/Sec	N/A - Synthetic	Age Range	Youth and Adult
Grass	Synthetic	Community	No
Synthetic	Yes	Area Mgr	Kasey Spriggs
Irrigation	N/A - Synthetic	Sports Play	Flag Football, Lacrosse, Soccer, Kickball
Lighted	Yes	Regulation	Soccer
Light Notes	Musco Dark Sky / 11:00pm		
Amenities	Full and Crosswise Goals, Restrooms		

## L38 Long Bridge Park

GIS ID	Field Name	
<b>R25</b>	<b>Long Bridge Park Synthetic Field #4</b>	
GRASP® Score	GRASP® Field Element	
<b>3</b>	General Field Score	
<b>3</b>	Turf	
<b>3</b>	SynTurf	
<b>0</b>	Irrigation	
<b>3</b>	Lighting	ADA Red Flag
<b>2</b>	Goals	
<b>0</b>	Bleachers	
<b>1</b>	Team Storage	Comments
<b>1</b>	Run Out Area	<i>Kind of exposed. Could use shade</i>
<b>1</b>	Scoreboard	
<b>0</b>	PressBox	
<b>0</b>	WarmUp	
<b>3</b>	General Field Drainage	

### Additional Information

Classification	County Parkland	Permits	Permit Takes Priority
Prim/Sec	N/A - Synthetic	Age Range	Youth and Adult
Grass	Synthetic	Community	No
Synthetic	Yes	Area Mgr	Kasey Spriggs
Irrigation	N/A - Synthetic	Sports Play	Flag Football, Lacrosse, Soccer, Kickball
Lighted	Yes	Regulation	Soccer
Light Notes	Musco Dark Sky / 11:00pm		
Amenities	Full and Crosswise Goals, Restrooms		

**THIS PAGE INTENTIONALLY LEFT BLANK**



# L39 Madison Manor Park

**Legend**

- Rectangle
- Diamond
- Combination Field
- Open Turf/Other Field (not assessed)
- Public Parks
- Private Open Space
- School





# Arlington County Fields Assessment Review

GIS ID            Location Name  
**L39**            **Madison Manor Park**

GRASP® Score	GRASP® Modifier Element
<b>3</b>	Restroom
<b>2</b>	Parking
<b>0</b>	Security/Egress Lighting
<b>3</b>	Shade Shelter
<b>2</b>	Drinking Water
<b>0</b>	Concessions
<b>3</b>	Playground
<b>0</b>	Maintenance Storage

ADA Red Flag  
*Limited access*

Comments



# Arlington County Combination Fields

## L39 Madison Manor Park

GIS ID: C09  
Field Name: Madison Manor Park

GRASP®	GRASP® Field Element	GRASP® Score	GRASP® Field Element
Diamond Scoring		Rectangle Scoring	
1	General Field Score	1	General Field Score
1	Infield	2	Turf
1	Turf	0	Irrigation
0	Irrigation	0	Lighting
0	Lighting	0	Bleacher
1	Backstop	2	Goals
1	Dugouts	1	Runout
0	Fencing	0	Scoreboard
0	Warmup	0	Press Box
1	Bleachers	0	Warmup Area
0	Scoreboard	0	Team Storage
0	Pressbox	0	
2	Team Storage		

ADA Red Flag  
*Limited access*

General Comments:  
Infield is pretty rough. Turf has some wear spots

2 General Drainage

### Additional Information

Classification	County Parkland	Permits	Permit Takes Priority
Prim/Sec	Secondary	Age Range	Youth
Grass	Cool Season	Community	No
Irrigation	No	Area Mgr	Kevin Stalica
Lighted	No	Sports Play	Baseball, Soccer
Light Notes	N/A	Regulation	None
Amenities	Backstop, Bleachers, Restrooms		

**THIS PAGE INTENTIONALLY LEFT BLANK**



# L41 Nottingham Elementary School

- Legend**
- Rectangle
  - Diamond
  - Combination Field
  - Open Turf/Other Field (not assessed)
  - Public Parks
  - Private Open Space
  - School







# Arlington County Fields Assessment Review

GIS ID      Location Name  
**L41**      **Nottingham Elementary School**

GRASP®  
Score

GRASP®  
Modifier Element

1	Restroom
1	Parking
0	Security/Egress Lighting
0	Shade Shelter
0	Drinking Water
0	Concessions
2	Playground
0	Maintenance Storage

ADA Red Flag  
*Limited access*

Comments  
*Portables really limit the rectangles.*



# Arlington County Combination Fields

## L41 Nottingham Elementary School

GIS ID Field Name  
C10 Nottingham Elementary School #1

GRASP®	GRASP® Field Element	GRASP® Score	GRASP® Field Element
Diamond Scoring		Rectangle Scoring	
<input type="text" value="1"/>	General Field Score	<input type="text" value="1"/>	General Field Score
<input type="text" value="1"/>	Infield	<input type="text" value="1"/>	Turf
<input type="text" value="1"/>	Turf	<input type="text" value="0"/>	Irrigation
<input type="text" value="0"/>	Irrigation	<input type="text" value="0"/>	Lighting
<input type="text" value="0"/>	Lighting	<input type="text" value="0"/>	Bleacher
<input type="text" value="1"/>	Backstop	<input type="text" value="0"/>	Goals
<input type="text" value="1"/>	Dugouts	<input type="text" value="-1"/>	Runout
<input type="text" value="0"/>	Fencing	<input type="text" value="0"/>	Scoreboard
<input type="text" value="0"/>	Warmup	<input type="text" value="0"/>	Press Box
<input type="text" value="0"/>	Bleachers	<input type="text" value="0"/>	Warmup Area
<input type="text" value="0"/>	Scoreboard	<input type="text" value="0"/>	Team Storage
<input type="text" value="0"/>	Pressbox	<input type="text" value="0"/>	
<input type="text" value="2"/>	Team Storage		

ADA Red Flag  
*Limited access*

General Comments:  
Playground and trees limit size

General Drainage

---

### Additional Information

Classification	Arlington Public Schools	Permits	Permit Takes Priority
Prim/Sec	Secondary	Age Range	Youth
Grass	Cool Season	Community	No
Irrigation	No	Area Mgr	Kevin Stalica
Lighted	No	Sports Play	Baseball, Soccer
Light Notes	N/A	Regulation	None
Amenities	Backstop, Benches		



# Arlington County Combination Fields

## L41 Nottingham Elementary School

GIS ID            Field Name  
 C11                Nottingham Elementary School #2

GRASP®	GRASP® Field Element	GRASP® Score	GRASP® Field Element	
Diamond Scoring		Rectangle Scoring		
<input type="text" value="1"/>	General Field Score	<input type="text" value="1"/>	General Field Score	ADA Red Flag <i>Limited access</i>  General Comments: Has portable limiting usefulness
<input type="text" value="2"/>	Infield	<input type="text" value="2"/>	Turf	
<input type="text" value="2"/>	Turf	<input type="text" value="0"/>	Irrigation	
<input type="text" value="0"/>	Irrigation	<input type="text" value="0"/>	Lighting	
<input type="text" value="0"/>	Lighting	<input type="text" value="0"/>	Bleacher	
<input type="text" value="1"/>	Backstop	<input type="text" value="0"/>	Goals	
<input type="text" value="1"/>	Dugouts	<input type="text" value="-1"/>	Runout	
<input type="text" value="0"/>	Fencing	<input type="text" value="0"/>	Scoreboard	
<input type="text" value="0"/>	Warmup	<input type="text" value="0"/>	Press Box	
<input type="text" value="1"/>	Bleachers	<input type="text" value="0"/>	Warmup Area	
<input type="text" value="0"/>	Scoreboard	<input type="text" value="0"/>	Team Storage	
<input type="text" value="0"/>	Pressbox	<input type="text" value="0"/>		
<input type="text" value="2"/>	Team Storage			
<input type="text" value="2"/>	General Drainage			

---

### Additional Information

Classification	Arlington Public Schools	Permits	Permit Takes Priority
Prim/Sec	Secondary	Age Range	Youth
Grass	Cool Season	Community	No
Irrigation	No	Area Mgr	Kevin Stalica
Lighted	No	Sports Play	Baseball, Soccer
Light Notes	N/A	Regulation	None
Amenities	Backstop, Benches		

# L42 Oakgrove Park

- Legend**
- Rectangle
  - Diamond
  - Combination Field
  - Open Turf/Other Field (not assessed)
  - Public Parks
  - Private Open Space
  - School





# Arlington County Fields Assessment Review

GIS ID            Location Name  
**L42**            **Oakgrove Park**

GRASP® Score	GRASP® Modifier Element
<b>0</b>	Restroom
<b>2</b>	Parking
<b>0</b>	Security/Egress Lighting
<b>2</b>	Shade Shelter
<b>0</b>	Drinking Water
<b>0</b>	Concessions
<b>2</b>	Playground
<b>0</b>	Maintenance Storage

ADA Red Flag

Comments

*Nice park setting*



## L42 Oakgrove Park

GIS ID	Field Name
<b>R26</b>	<b>Oakgrove Park</b>
GRASP® Score	GRASP® Field Element
<b>2</b>	General Field Score
<b>2</b>	Turf
<b>0</b>	SynTurf
<b>1</b>	Irrigation
<b>0</b>	Lighting
<b>2</b>	Goals
<b>2</b>	Bleachers
<b>0</b>	Team Storage
<b>1</b>	Run Out Area
<b>0</b>	Scoreboard
<b>0</b>	PressBox
<b>0</b>	WarmUp
<b>2</b>	General Field Drainage

ADA Red Flag

Comments

*A potentially very nice field with some current drainage issues on south end*

### Additional Information

Classification	County Parkland	Permits	Permit Only
Prim/Sec	Primary	Age Range	Youth
Grass	Bermuda	Community	No
Synthetic	No	Area Mgr	Kevin Stalica
Irrigation	Yes	Sports Play	Soccer
Lighted	No	Regulation	Junior Soccer
Light Notes	N/A		
Amenities	Junior Goals, Bleachers		

**THIS PAGE INTENTIONALLY LEFT BLANK**

Legend


 Rectangle

 Diamond

 Combination Field

 Open Turf/Other Field (not assessed)

 Public Parks

 Private Open Space

 School



**L43**  
**Oakridge Elementary School**





# Arlington County Fields Assessment Review

GIS ID      Location Name  
**L43**      **Oakridge Elementary School**

GRASP®  
Score

GRASP®  
Modifier Element

<b>0</b>	Restroom
<b>2</b>	Parking
<b>0</b>	Security/Egress Lighting
<b>0</b>	Shade Shelter
<b>0</b>	Drinking Water
<b>0</b>	Concessions
<b>3</b>	Playground
<b>0</b>	Maintenance Storage

ADA Red Flag  
*Limited access*

Comments



# Arlington County Rectangle Fields

## L43 Oakridge Elementary School

GIS ID: **R27** Field Name: **Oakridge Elementary School**

GRASP® Score: GRASP® Field Element

<b>2</b>	General Field Score	
<b>2</b>	Turf	
<b>0</b>	SynTurf	
<b>1</b>	Irrigation	ADA Red Flag
<b>0</b>	Lighting	
<b>0</b>	Goals	
<b>0</b>	Bleachers	
<b>0</b>	Team Storage	Comments
<b>-1</b>	Run Out Area	
<b>0</b>	Scoreboard	
<b>0</b>	PressBox	
<b>0</b>	WarmUp	
<b>2</b>	General Field Drainage	

### Additional Information

Classification	Arlington Public Schools	Permits	Permit Takes Priority
Prim/Sec	Secondary	Age Range	Youth
Grass	Cool Season	Community	No
Synthetic	No	Area Mgr	Kasey Spriggs
Irrigation	No	Sports Play	Soccer
Lighted	No	Regulation	None
Light Notes	N/A		
Amenities	None		



**THIS PAGE INTENTIONALLY LEFT BLANK**

# L45 Patrick Henry School

**Legend**


 Rectangle


 Diamond

 Combination Field

 Open Turf/Other Field (not assessed)

 Public Parks

 Private Open Space

 School





# Arlington County Fields Assessment Review

GIS ID            Location Name  
**L45**            **Patrick Henry School**

GRASP® Score	GRASP® Modifier Element
<b>0</b>	Restroom
<b>2</b>	Parking
<b>2</b>	Security/Egress Lighting
<b>0</b>	Shade Shelter
<b>0</b>	Drinking Water
<b>0</b>	Concessions
<b>2</b>	Playground
<b>0</b>	Maintenance Storage

ADA Red Flag  
*Limited access*

Comments  
*Programming could change with recent field upgrades*



# Arlington County Combination Fields

## L45 Patrick Henry School

GIS ID: C12  
Field Name: Patrick Henry Elementary School

GRASP®	GRASP® Field Element	GRASP® Score	GRASP® Field Element
Diamond Scoring		Rectangle Scoring	
2	General Field Score	2	General Field Score
3	Infield	2	Turf
2	Turf	0	Irrigation
0	Irrigation	0	Lighting
0	Lighting	1	Bleacher
1	Backstop	0	Goals
1	Dugouts	-1	Runout
1	Fencing	0	Scoreboard
0	Warmup	0	Press Box
1	Bleachers	0	Warmup Area
0	Scoreboard	0	Team Storage
0	Pressbox		
0	Team Storage		

ADA Red Flag  
*Limited access*

General Comments:  
Used to be larger before temp classroom

2 General Drainage

---

### Additional Information



Classification	Arlington Public Schools	Permits	Permit Takes Priority
Prim/Sec	Secondary	Age Range	Youth
Grass	Cool Season	Community	No
Irrigation	No	Area Mgr	Kasey Spriggs
Lighted	No	Sports Play	Baseball, Soccer
Light Notes	N/A	Regulation	None
Amenities	Backstop, Benches		

**THIS PAGE INTENTIONALLY LEFT BLANK**



# L46 Powhatan Springs Park

**Legend**

-  Rectangle
-  Diamond
-  Combination Field
-  Open Turf/Other Field (not assessed)
-  Public Parks
-  Private Open Space
-  School





# Arlington County Fields Assessment Review

GIS ID            Location Name  
**L46**            **Powhatan Springs Park**

GRASP® Score	GRASP® Modifier Element
<b>3</b>	Restroom
<b>2</b>	Parking
<b>2</b>	Security/Egress Lighting
<b>2</b>	Shade Shelter
<b>3</b>	Drinking Water
<b>0</b>	Concessions
<b>0</b>	Playground
<b>0</b>	Maintenance Storage

ADA Red Flag

Comments

*Skate park adjacent*

## L46 Powhatan Springs Park

GIS ID	Field Name	
<b>R28</b>	<b>Powhatan Springs Park</b>	
GRASP® Score	GRASP® Field Element	
<b>2</b>	General Field Score	
<b>2</b>	Turf	
<b>0</b>	SynTurf	
<b>1</b>	Irrigation	
<b>0</b>	Lighting	ADA Red Flag
<b>2</b>	Goals	<i>Ongoing drainage issues in southeast corner of field</i>
<b>0</b>	Bleachers	
<b>2</b>	Team Storage	Comments
<b>1</b>	Run Out Area	
<b>0</b>	Scoreboard	
<b>0</b>	PressBox	
<b>0</b>	WarmUp	
<b>2</b>	General Field Drainage	

### Additional Information

Classification	County Parkland	Permits	Permit Only
Prim/Sec	Primary	Age Range	Youth
Grass	Bermuda	Community	No
Synthetic	No	Area Mgr	Lyndell Core
Irrigation	Yes	Sports Play	Soccer
Lighted	No	Regulation	Junior Soccer
Light Notes	N/A		
Amenities	Junior Goals, Benches, Restrooms		

**THIS PAGE INTENTIONALLY LEFT BLANK**



# L47 Quincy Park

**Legend**

■ Rectangle

◆ Diamond

● Combination Field

▲ Open Turf/Other Field (not assessed)

● Public Parks

● Private Open Space

● School



L57 - Washington-Lee High School







# Arlington County Fields Assessment Review

GIS ID      Location Name  
**L47**      **Quincy Park**

GRASP®  
Score

GRASP®  
Modifier Element

<b>2</b>	Restroom
<b>2</b>	Parking
<b>2</b>	Security/Egress Lighting
<b>2</b>	Shade Shelter
<b>2</b>	Drinking Water
<b>0</b>	Concessions
<b>2</b>	Playground
<b>2</b>	Maintenance Storage

ADA Red Flag

Comments

*Prime for synthetic. Park itself seems due for upgrades. Staff to investigate high school park parcel status.*

## L47 Quincy Park

GIS ID            Field Name  
C13                Quincy Park #1

GRASP®	GRASP® Field Element	GRASP® Score	GRASP® Field Element
Diamond Scoring		Rectangle Scoring	
<input type="text" value="3"/>	General Field Score	<input type="text" value="3"/>	General Field Score
<input type="text" value="3"/>	Infield	<input type="text" value="2"/>	Turf
<input type="text" value="3"/>	Turf	<input type="text" value="1"/>	Irrigation
<input type="text" value="1"/>	Irrigation	<input type="text" value="2"/>	Lighting
<input type="text" value="2"/>	Lighting	<input type="text" value="0"/>	Bleacher
<input type="text" value="3"/>	Backstop	<input type="text" value="2"/>	Goals
<input type="text" value="3"/>	Dugouts	<input type="text" value="1"/>	Runout
<input type="text" value="3"/>	Fencing	<input type="text" value="0"/>	Scoreboard
<input type="text" value="3"/>	Warmup	<input type="text" value="0"/>	Press Box
<input type="text" value="2"/>	Bleachers	<input type="text" value="0"/>	Warmup Area
<input type="text" value="1"/>	Scoreboard	<input type="text" value="0"/>	Team Storage
<input type="text" value="1"/>	Pressbox		
<input type="text" value="2"/>	Team Storage		

ADA Red Flag

General Comments:

Is this on the school parcel or Quincy park parcel? May need to fix parcels. Bad spot in outfield turf is currently being fixed. Nice portable outfield fence

General Drainage

---

### Additional Information

Classification	Arlington Public Schools	Permits	Permit Only
Prim/Sec	Primary	Age Range	Youth and Adult
Grass	Bermuda	Community	No
Irrigation	Yes	Area Mgr	Lyndell Core
Lighted	Yes	Sports Play	Baseball, Flag Football, Soccer
Light Notes	Traditional Manual / 11:00pm	Regulation	90ft Baseball, Soccer
Amenities	Goals, Backstop, Pressbox, Batting Cage, Bleachers, Portable Outfield Fence, Concrete Dugouts		

## L47 Quincy Park

GIS ID                      Field Name

**D24**                        **Quincy Park #2**

GRASP®                      GRASP®  
Score                        Field Element

2	General Field Score	
1	Infield Condition	
2	Turf Condition	
1	Irrigation	
2	Field Lighting	ADA Red Flag
2	Backstop	
1	Dugouts	
0	Fencing	
0	Warm Up (Batting Cage, Bullpen, etc)	General Comments
2	General Drainage	<i>Limited field size due to adjacent 90' field</i>
0	Bleachers	
0	Scoreboard	
0	Press Box	
2	Team Storage	

---

### Additional Information

Classification	County Parkland	Permits	Permit Takes Priority
Pri/Sec	Secondary	Age Range	Youth
Grass	???	Community	No
Irrigation	No	Area Mgr	Lyndell Core
Lighted	Yes	Sports Play	Baseball
Light Notes	Traditional Manual / 11:00pm	Regulation	None
Amenities	Backstop, Bleachers, Restrooms		

## L47 Quincy Park

GIS ID	Field Name	GRASP® Score	GRASP® Field Element
<b>D25</b>	<b>Quincy Park #3</b>		
<b>3</b>	General Field Score		
<b>3</b>	Infield Condition		
<b>3</b>	Turf Condition		
<b>1</b>	Irrigation		
<b>2</b>	Field Lighting		ADA Red Flag
<b>3</b>	Backstop		
<b>3</b>	Dugouts		
<b>3</b>	Fencing		
<b>3</b>	Warm Up (Batting Cage, Bullpen, etc)		General Comments
<b>3</b>	General Drainage		<i>Nice adult softball field</i>
<b>3</b>	Bleachers		
<b>1</b>	Scoreboard		
<b>0</b>	Press Box		
<b>2</b>	Team Storage		

---

### Additional Information

Classification	County Parkland	Permits	Permit Only
Pri/Sec	Primary	Age Range	Youth and Adult
Grass	Bermuda	Community	No
Irrigation	Yes	Area Mgr	Lyndell Core
Lighted	Yes	Sports Play	Softball
Light Notes	Traditional Manual / 11:00pm	Regulation	Adult Softball
Amenities	Backstop, Bleachers, Outfield Fence		

**THIS PAGE INTENTIONALLY LEFT BLANK**



# L56 Reed School

- Legend**
- Rectangle
  - Diamond
  - Combination Field
  - Open Turf/Other Field (not assessed)
  - Public Parks
  - Private Open Space
  - School





# Arlington County Fields Assessment Review

GIS ID      Location Name  
**L56**      **Reed School**

GRASP®  
Score

GRASP®  
Modifier Element

<b>0</b>	Restroom
<b>2</b>	Parking
<b>2</b>	Security/Egress Lighting
<b>0</b>	Shade Shelter
<b>2</b>	Drinking Water
<b>0</b>	Concessions
<b>3</b>	Playground
<b>0</b>	Maintenance Storage

ADA Red Flag

Comments

*Added to inventory. Need parcel and additional county field information at the bottom of each field sheet*



# Arlington County Rectangle Fields

## L56 Reed School

GIS ID **R45** Field Name **Reed School**

GRASP® Score GRASP® Field Element

<b>2</b>	General Field Score	
<b>2</b>	Turf	
<b>0</b>	SynTurf	
<b>0</b>	Irrigation	ADA Red Flag
<b>0</b>	Lighting	Limited access
<b>0</b>	Goals	
<b>0</b>	Bleachers	
<b>0</b>	Team Storage	Comments
<b>1</b>	Run Out Area	Reed field not included in set
<b>0</b>	Scoreboard	
<b>0</b>	PressBox	
<b>0</b>	WarmUp	
<b>2</b>	General Field Drainage	

### Additional Information

Classification	Arlington Public Schools	Permits
Prim/Sec		Age Range
Grass		Community
Synthetic	No	Area Mgr
Irrigation	No	Sports Play
Lighted		Regulation
Light Notes		
Amenities		



# Arlington County Diamond Fields

## L56 Reed School

GIS ID Field Name

**D35** **Reed School**

GRASP® GRASP®  
Score Field Element

2	General Field Score	
2	Infield Condition	
2	Turf Condition	
0	Irrigation	
0	Field Lighting	ADA Red Flag
1	Backstop	Limited access
1	Dugouts	
1	Fencing	
0	Warm Up (Batting Cage, Bullpen, etc)	General Comments
2	General Drainage	Small field limited by basketball courts
0	Bleachers	
0	Scoreboard	
0	Press Box	
0	Team Storage	

---



### Additional Information

Classification	Arlington Public Schools	Permits
Pri/Sec		Age Range
Grass		Community
Irrigation		Area Mgr
Lighted		Sports Play
Light Notes		Regulation
Amenities		



# L48 Rocky Run Park

**Legend**

-  Rectangle
-  Diamond
-  Combination Field
-  Open Turf/Other Field (not assessed)
-  Public Parks
-  Private Open Space
-  School







# Arlington County Fields Assessment Review

GIS ID            Location Name  
**L48**            **Rocky Run Park**

GRASP®  
Score

GRASP®  
Modifier Element

<b>3</b>	Restroom
<b>2</b>	Parking
<b>2</b>	Security/Egress Lighting
<b>2</b>	Shade Shelter
<b>2</b>	Drinking Water
<b>0</b>	Concessions
<b>1</b>	Playground
<b>0</b>	Maintenance Storage

ADA Red Flag

Comments

*Nicely designed park. Great playground but quite a ways from field*

## L48 Rocky Run Park

GIS ID	Field Name
<b>R29</b>	<b>Rocky Run Park</b>
GRASP® Score	GRASP® Field Element
<b>3</b>	General Field Score
<b>3</b>	Turf
<b>0</b>	SynTurf
<b>0</b>	Irrigation
<b>3</b>	Lighting
<b>0</b>	Goals
<b>3</b>	Bleachers
<b>0</b>	Team Storage
<b>-1</b>	Run Out Area
<b>0</b>	Scoreboard
<b>0</b>	PressBox
<b>0</b>	WarmUp
<b>3</b>	General Field Drainage

ADA Red Flag

Comments

*Small field*


### Additional Information

Classification	County Parkland	Permits	Permit Takes Priority
Prim/Sec	N/A - Synthetic	Age Range	Youth and Adult
Grass	Synthetic	Community	Community Drop-In with Limited Programming
Synthetic	No	Area Mgr	Lyndell Core
Irrigation	N/A - Synthetic	Sports Play	Soccer
Lighted	Yes	Regulation	None
Light Notes	Traditional Manual / 10:00pm		
Amenities	Bleachers, Restrooms		

**THIS PAGE INTENTIONALLY LEFT BLANK**

# L49 Stratford Park

**Legend**

-  Rectangle
-  Diamond
-  Combination Field
-  Open Turf/Other Field (not assessed)
-  Public Parks
-  Private Open Space
-  School





# Arlington County Fields Assessment Review

GIS ID            Location Name  
**L49**            **Stratford Park**

GRASP® Score	GRASP® Modifier Element
<b>2</b>	Restroom
<b>2</b>	Parking
<b>0</b>	Security/Egress Lighting
<b>0</b>	Shade Shelter
<b>0</b>	Drinking Water
<b>0</b>	Concessions
<b>0</b>	Playground
<b>0</b>	Maintenance Storage

ADA Red Flag  
*Limited access*

Comments  
*Site has ADA challenges*



## L49 Stratford Park

GIS ID                      Field Name

**D26**                        **Stratford Park**

GRASP®                    GRASP®  
Score                        Field Element

3	General Field Score	
3	Infield Condition	
3	Turf Condition	
1	Irrigation	
0	Field Lighting	ADA Red Flag
3	Backstop	
2	Dugouts	
3	Fencing	
3	Warm Up (Batting Cage, Bullpen, etc)	General Comments
3	General Drainage	<i>Planned and funded upgrade to include full fencing.</i>
3	Bleachers	
0	Scoreboard	
0	Press Box	
2	Team Storage	

---

### Additional Information

Classification	County Parkland	Permits	Permit Takes Priority
Pri/Sec	Secondary	Age Range	Youth
Grass	Cool Season	Community	No
Irrigation	No	Area Mgr	Kevin Stalica
Lighted	No	Sports Play	Baseball, Soccer, Ultimate Frisbee
Light Notes	N/A	Regulation	None
Amenities	Backstop, Benches		

**THIS PAGE INTENTIONALLY LEFT BLANK**

# L50 Swanson Middle School

**Legend**

-  Rectangle
-  Diamond
-  Combination Field
-  Open Turf/Other Field (not assessed)
-  Public Parks
-  Private Open Space
-  School





# Arlington County Fields Assessment Review

GIS ID            Location Name  
**L50**            **Swanson Middle School**

GRASP®  
Score

GRASP®  
Modifier Element

<b>1</b>	Restroom
<b>2</b>	Parking
<b>0</b>	Security/Egress Lighting
<b>0</b>	Shade Shelter
<b>0</b>	Drinking Water
<b>0</b>	Concessions
<b>0</b>	Playground
<b>0</b>	Maintenance Storage

ADA Red Flag

Comments



# Arlington County Rectangle Fields

## L50 Swanson Middle School

GIS ID	Field Name	
<b>R30</b>	<b>Swanson Middle School</b>	
GRASP® Score	GRASP® Field Element	
<b>2</b>	General Field Score	
<b>3</b>	Turf	
<b>0</b>	SynTurf	
<b>1</b>	Irrigation	
<b>0</b>	Lighting	ADA Red Flag <i>Limited access</i>
<b>2</b>	Goals	
<b>2</b>	Bleachers	
<b>0</b>	Team Storage	Comments
<b>1</b>	Run Out Area	<i>Re-sodded. Based on other middle schools this probably should be synthetic</i>
<b>0</b>	Scoreboard	
<b>0</b>	PressBox	
<b>0</b>	WarmUp	
<b>2</b>	General Field Drainage	

### Additional Information

Classification	Arlington Public Schools	Permits	Permit Takes Priority
Prim/Sec	Primary	Age Range	Youth
Grass	Bermuda	Community	No
Synthetic	No	Area Mgr	Kevin Stalica
Irrigation	Yes	Sports Play	Soccer
Lighted	No	Regulation	None
Light Notes	N/A		
Amenities	Junior and Full Size Goals, Bleachers		



**THIS PAGE INTENTIONALLY LEFT BLANK**

# L51 Thomas Jefferson Community Center

- Legend
- Rectangle
  - Diamond
  - Combination Field
  - Open Turf/Other Field (not assessed)
  - Public Parks
  - Private Open Space
  - School





# Arlington County Fields Assessment Review

GIS ID      Location Name  
**L51**      **Thomas Jefferson Community Center**

GRASP®  
Score

GRASP®  
Modifier Element

<b>2</b>	Restroom
<b>2</b>	Parking
<b>2</b>	Security/Egress Lighting
<b>0</b>	Shade Shelter
<b>3</b>	Drinking Water
<b>0</b>	Concessions
<b>2</b>	Playground
<b>2</b>	Maintenance Storage

ADA Red Flag

Comments

## L51 Thomas Jefferson Community Center

GIS ID	Field Name	
<b>R31</b>	<b>TJ Park - Lower Field</b>	
GRASP® Score	GRASP® Field Element	
<b>2</b>	General Field Score	
<b>1</b>	Turf	
<b>1</b>	SynTurf	
<b>0</b>	Irrigation	ADA Red Flag
<b>3</b>	Lighting	
<b>2</b>	Goals	
<b>3</b>	Bleachers	
<b>0</b>	Team Storage	Comments
<b>1</b>	Run Out Area	<i>Older synthetic. Replacement date unknown</i>
<b>0</b>	Scoreboard	
<b>0</b>	PressBox	
<b>0</b>	WarmUp	
<b>3</b>	General Field Drainage	

### Additional Information

Classification	County Parkland	Permits	Permit Takes Priority
Prim/Sec	N/A - Synthetic	Age Range	Youth and Adult
Grass	Synthetic	Community	Community Drop-In with Limited Programming
Synthetic	Yes	Area Mgr	Kasey Spriggs
Irrigation	N/A - Synthetic	Sports Play	Soccer
Lighted	Yes	Regulation	None
Light Notes	Musco Dark Sky / 10:00pm		
Amenities	Goals, Bleachers		



# Arlington County Rectangle Fields

## L51 Thomas Jefferson Community Center

GIS ID	Field Name	
<b>R32</b>	<b>TJ Park - Upper Field</b>	
GRASP® Score	GRASP® Field Element	
<b>2</b>	General Field Score	
<b>2</b>	Turf	
<b>0</b>	SynTurf	
<b>1</b>	Irrigation	
<b>3</b>	Lighting	ADA Red Flag
<b>2</b>	Goals	
<b>2</b>	Bleachers	
<b>0</b>	Team Storage	Comments
<b>1</b>	Run Out Area	<i>A few spots of bad turf</i>
<b>0</b>	Scoreboard	
<b>0</b>	PressBox	
<b>1</b>	WarmUp	
<b>3</b>	General Field Drainage	

### Additional Information

Classification	County Parkland	Permits	Permit Only
Prim/Sec	Primary	Age Range	Youth and Adult
Grass	Bermuda	Community	No
Synthetic	No	Area Mgr	Kasey Spriggs
Irrigation	Yes	Sports Play	Soccer
Lighted	Yes	Regulation	Soccer
Light Notes	Musco Dark Sky / 10:00pm		
Amenities	Goals, Bleachers, Outfield Fence		



## L51 Thomas Jefferson Community Center

GIS ID	Field Name	GRASP® Score	GRASP® Field Element	
<b>D27</b>	<b>TJ Park - Diamond Field</b>			
<b>2</b>	General Field Score			
<b>2</b>	Infield Condition			
<b>2</b>	Turf Condition			
<b>1</b>	Irrigation			
<b>0</b>	Field Lighting			ADA Red Flag
<b>2</b>	Backstop			<i>Perfect example of new Ada standards</i>
<b>1</b>	Dugouts			
<b>2</b>	Fencing			
<b>0</b>	Warm Up (Batting Cage, Bullpen, etc)			General Comments
<b>1</b>	General Drainage			<i>Limited fencing and drainage issue down 3rd base line</i>
<b>3</b>	Bleachers			
<b>0</b>	Scoreboard			
<b>0</b>	Press Box			
<b>0</b>	Team Storage			

---

### Additional Information

Classification	County Parkland	Permits	Permit Takes Priority
Pri/Sec	Primary	Age Range	Youth
Grass	Cool Season	Community	No
Irrigation	Yes	Area Mgr	Kasey Spriggs
Lighted	No	Sports Play	Baseball
Light Notes	N/A	Regulation	None
Amenities	Backstop, Bleachers		

**THIS PAGE INTENTIONALLY LEFT BLANK**

# L52 Tuckahoe Park

**Legend**

- Rectangle
- Diamond
- Combination Field
- Open Turf/Other Field (not assessed)
- Public Parks
- Private Open Space
- School





# Arlington County Fields Assessment Review

GIS ID            Location Name  
**L52**            **Tuckahoe Park**

GRASP®  
Score

GRASP®  
Modifier Element

<b>2</b>	Restroom
<b>2</b>	Parking
<b>0</b>	Security/Egress Lighting
<b>2</b>	Shade Shelter
<b>3</b>	Drinking Water
<b>0</b>	Concessions
<b>2</b>	Playground
<b>0</b>	Maintenance Storage

ADA Red Flag

Comments

*Portolet with enclosure coming*



# Arlington County Combination Fields

## L52 Tuckahoe Park

GIS ID: C14  
Field Name: Tuckahoe Park #1

GRASP®	GRASP® Field Element	GRASP® Score	GRASP® Field Element
Diamond Scoring		Rectangle Scoring	
3	General Field Score	3	General Field Score
3	Infield	2	Turf
2	Turf	1	Irrigation
1	Irrigation	0	Lighting
0	Lighting	0	Bleacher
3	Backstop	2	Goals
3	Dugouts	1	Runout
1	Fencing	0	Scoreboard
3	Warmup	0	Press Box
3	Bleachers	1	Warmup Area
1	Scoreboard	2	Team Storage
0	Pressbox		
2	Team Storage		

ADA Red Flag

General Comments:

Field fencing is good but no outfield fences.. Bermuda turf, batting cages, bullpens coming

3 General Drainage

---

### Additional Information

Classification	County Parkland	Permits	Permit Takes Priority
Prim/Sec	Primary	Age Range	Youth
Grass	Bermuda	Community	No
Irrigation	Yes	Area Mgr	Kevin Stalica
Lighted	No	Sports Play	Baseball, Softball, Soccer
Light Notes	N/A	Regulation	None
Amenities	Backstop, Bleachers, Storage		





# Arlington County Combination Fields

## L52 Tuckahoe Park

GIS ID C15  
Field Name Tuckahoe Park #2

GRASP®	GRASP® Field Element	GRASP® Score	GRASP® Field Element
Diamond Scoring		Rectangle Scoring	
<input type="text" value="3"/>	General Field Score	<input type="text" value="3"/>	General Field Score
<input type="text" value="3"/>	Infield	<input type="text" value="2"/>	Turf
<input type="text" value="2"/>	Turf	<input type="text" value="1"/>	Irrigation
<input type="text" value="1"/>	Irrigation	<input type="text" value="0"/>	Lighting
<input type="text" value="0"/>	Lighting	<input type="text" value="3"/>	Bleacher
<input type="text" value="3"/>	Backstop	<input type="text" value="2"/>	Goals
<input type="text" value="3"/>	Dugouts	<input type="text" value="1"/>	Runout
<input type="text" value="1"/>	Fencing	<input type="text" value="0"/>	Scoreboard
<input type="text" value="3"/>	Warmup	<input type="text" value="0"/>	Press Box
<input type="text" value="3"/>	Bleachers	<input type="text" value="1"/>	Warmup Area
<input type="text" value="0"/>	Scoreboard	<input type="text" value="0"/>	Team Storage
<input type="text" value="0"/>	Pressbox		
<input type="text" value="0"/>	Team Storage		

ADA Red Flag

General Comments:

Field fencing is good but no outfield fences.. Bermuda turf, batting cages, bullpens coming

General Drainage

---

### Additional Information

Classification	County Parkland	Permits	Permit Takes Priority
Prim/Sec	Primary	Age Range	Youth and Adult
Grass	Bermuda	Community	No
Irrigation	Yes	Area Mgr	Kevin Stalica
Lighted	No	Sports Play	Baseball, Softball, Soccer
Light Notes	N/A	Regulation	None
Amenities	Backstop, Bleachers		

# L53 Utah Park

**Legend**

■ Rectangle

◆ Diamond

○ Combination Field

▲ Open Turf/Other Field (not assessed)

● Public Parks

● Private Open Space

● School





# Arlington County Fields Assessment Review

GIS ID      Location Name  
**L53**      **Utah Park**

GRASP®  
Score

GRASP®  
Modifier Element

<b>1</b>	Restroom
<b>1</b>	Parking
<b>2</b>	Security/Egress Lighting
<b>2</b>	Shade Shelter
<b>2</b>	Drinking Water
<b>0</b>	Concessions
<b>0</b>	Playground
<b>0</b>	Maintenance Storage

ADA Red Flag

Comments

## L53 Utah Park

GIS ID                      Field Name  
**D28**                        **Utah Park**

GRASP®                    GRASP®  
 Score                        Field Element

2	General Field Score	
2	Infield Condition	
2	Turf Condition	
1	Irrigation	
2	Field Lighting	ADA Red Flag
2	Backstop	
2	Dugouts	
2	Fencing	
0	Warm Up (Batting Cage, Bullpen, etc)	General Comments
2	General Drainage	
2	Bleachers	
0	Scoreboard	
0	Press Box	
0	Team Storage	

---

### Additional Information

Classification	County Parkland	Permits	Permit Only
Pri/Sec	Primary	Age Range	Youth and Adult
Grass	Cool Season	Community	No
Irrigation	Yes	Area Mgr	Kevin Stalica
Lighted	Yes	Sports Play	Softball
Light Notes	Traditional Manual / 11:00pm	Regulation	Adult Softball
Amenities	Backstop, Bleachers, Dugouts, Outfield Fence, Restrooms		

**THIS PAGE INTENTIONALLY LEFT BLANK**



**Legend**

■ Rectangle

◆ Diamond

○ Combination Field

▲ Open Turf/Other Field (not assessed)

● Public Parks

● Private Open Space

● School

**L54**

**Virginia Highlands Park**





# Arlington County Fields Assessment Review

GIS ID            Location Name  
**L54**            **Virginia Highlands Park**

GRASP® Score	GRASP® Modifier Element
<b>3</b>	Restroom
<b>2</b>	Parking
<b>2</b>	Security/Egress Lighting
<b>2</b>	Shade Shelter
<b>2</b>	Drinking Water
<b>0</b>	Concessions
<b>2</b>	Playground
<b>0</b>	Maintenance Storage

ADA Red Flag

Comments

*Full restroom available onsite. Portables used close to diamonds in season*

## L54 Virginia Highlands Park

GIS ID	Field Name	
<b>R33</b>	<b>Virginia Highlands Park #1</b>	
GRASP® Score	GRASP® Field Element	
<b>3</b>	General Field Score	
<b>3</b>	Turf	
<b>3</b>	SynTurf	
<b>0</b>	Irrigation	
<b>3</b>	Lighting	ADA Red Flag
<b>2</b>	Goals	
<b>3</b>	Bleachers	
<b>0</b>	Team Storage	Comments
<b>1</b>	Run Out Area	
<b>0</b>	Scoreboard	
<b>0</b>	PressBox	
<b>1</b>	WarmUp	
<b>3</b>	General Field Drainage	

### Additional Information

Classification	County Parkland	Permits	Permit Takes Priority
Prim/Sec	N/A - Synthetic	Age Range	Youth and Adult
Grass	Synthetic	Community	No
Synthetic	Yes	Area Mgr	Kasey Spriggs
Irrigation	N/A - Synthetic	Sports Play	Soccer
Lighted	Yes	Regulation	Soccer
Light Notes	Musco Dark Sky / 10:00pm		
Amenities	Junior and Full Size Goals, Bleachers, Storage, Restroom		



# Arlington County Rectangle Fields

## L54 Virginia Highlands Park

GIS ID	Field Name	
<b>R34</b>	<b>Virginia Highlands Park #2</b>	
GRASP® Score	GRASP® Field Element	
<b>1</b>	General Field Score	
<b>1</b>	Turf	
<b>0</b>	SynTurf	
<b>1</b>	Irrigation	ADA Red Flag
<b>0</b>	Lighting	
<b>2</b>	Goals	
<b>0</b>	Bleachers	
<b>0</b>	Team Storage	Comments
<b>1</b>	Run Out Area	<i>Closed to preserve turf</i>
<b>0</b>	Scoreboard	
<b>0</b>	PressBox	
<b>0</b>	WarmUp	
<b>2</b>	General Field Drainage	

### Additional Information

Classification	County Parkland	Permits	Permit Takes Priority
Prim/Sec	Primary	Age Range	Youth and Adult
Grass	Bermuda	Community	Community Drop-In with Limited Programming
Synthetic	No	Area Mgr	Kasey Spriggs
Irrigation	Yes	Sports Play	Soccer
Lighted	No	Regulation	Junior Soccer
Light Notes	N/A		
Amenities	Junior Goals, Restroom		

## L54 Virginia Highlands Park

GIS ID	Field Name	GRASP® Score	GRASP® Field Element
<b>D29</b>	<b>Virginia Highlands Park #3</b>		
<b>2</b>	General Field Score		
<b>2</b>	Infield Condition		
<b>2</b>	Turf Condition		
<b>1</b>	Irrigation		
<b>3</b>	Field Lighting		ADA Red Flag
<b>2</b>	Backstop		
<b>2</b>	Dugouts		
<b>2</b>	Fencing		
<b>0</b>	Warm Up (Batting Cage, Bullpen, etc)		General Comments
<b>2</b>	General Drainage		<i>Minor drainage issues</i>
<b>2</b>	Bleachers		
<b>0</b>	Scoreboard		
<b>0</b>	Press Box		
<b>0</b>	Team Storage		

---

### Additional Information

Classification	County Parkland	Permits	Permit Only
Pri/Sec	Secondary	Age Range	Youth and Adult
Grass	Cool Season	Community	No
Irrigation	No	Area Mgr	Kasey Spriggs
Lighted	Yes	Sports Play	Softball, Baseball
Light Notes	Musco Dark Sky / 10:00pm	Regulation	Adult Softball
Amenities	Backstop, Bleachers, Outfield Fence, Dugouts with Player Benches, Restroom		



## L54 Virginia Highlands Park

GIS ID	Field Name	GRASP® Score	GRASP® Field Element	
<b>D30</b>	<b>Virginia Highlands Park #4</b>			
<input type="text" value="2"/>	General Field Score			
<input type="text" value="2"/>	Infield Condition			
<input type="text" value="2"/>	Turf Condition			
<input type="text" value="0"/>	Irrigation			
<input type="text" value="3"/>	Field Lighting			ADA Red Flag
<input type="text" value="2"/>	Backstop			
<input type="text" value="2"/>	Dugouts			
<input type="text" value="2"/>	Fencing			
<input type="text" value="0"/>	Warm Up (Batting Cage, Bullpen, etc)			General Comments
<input type="text" value="2"/>	General Drainage			<i>Minor drainage issues</i>
<input type="text" value="2"/>	Bleachers			
<input type="text" value="0"/>	Scoreboard			
<input type="text" value="0"/>	Press Box			
<input type="text" value="0"/>	Team Storage			

---

### Additional Information

Classification	County Parkland	Permits	Permit Takes Priority
Pri/Sec	Secondary	Age Range	Youth and Adult
Grass	Cool Season	Community	No
Irrigation	No	Area Mgr	Kasey Spriggs
Lighted	Yes	Sports Play	Softball, Baseball
Light Notes	Musco Dark Sky / 10:00pm	Regulation	Adult Softball
Amenities	Backstop, Bleachers, Outfield Fence, Dugouts with Player Benches, Restroom		

**L55**  
**Wakefield High School**

- Legend**
- Rectangle
  - Diamond
  - Combination Field
  - Open Turf/Other Field (not assessed)
  - Public Parks
  - Private Open Space
  - School





# Arlington County Fields Assessment Review

GIS ID            Location Name  
**L55**            **Wakefield High School**

GRASP® Score	GRASP® Modifier Element
<b>3</b>	Restroom
<b>3</b>	Parking
<b>3</b>	Security/Egress Lighting
<b>2</b>	Shade Shelter
<b>2</b>	Drinking Water
<b>3</b>	Concessions
<b>0</b>	Playground
<b>1</b>	Maintenance Storage

ADA Red Flag

Comments

*New school. New fields. Shaded area at concessions. Storage is small fenced area.*

## L55 Wakefield High School

GIS ID	Field Name	
<b>R38</b>	<b>Wakefield High School - Stadium</b>	
GRASP® Score	GRASP® Field Element	
<b>3</b>	General Field Score	
<b>3</b>	Turf	
<b>3</b>	SynTurf	
<b>0</b>	Irrigation	
<b>3</b>	Lighting	ADA Red Flag
<b>3</b>	Goals	
<b>3</b>	Bleachers	
<b>2</b>	Team Storage	Comments
<b>1</b>	Run Out Area	<i>Newer synthetic field</i>
<b>1</b>	Scoreboard	
<b>1</b>	PressBox	
<b>0</b>	WarmUp	
<b>3</b>	General Field Drainage	

### Additional Information

Classification	Arlington Public Schools	Permits	Permit Takes Priority
Prim/Sec	N/A - Synthetic	Age Range	Youth and Adult
Grass	Synthetic	Community	No
Synthetic	Yes	Area Mgr	Kevin Stalica
Irrigation	N/A - Synthetic	Sports Play	Soccer, Flag Football, Tackle Football, Lacrosse, Field Hockey, Ultimate Frisbee
Lighted	Yes	Regulation	Soccer, Field Hockey, Men's & Women's Lacrosse, Football
Light Notes	Traditional Manual / 11:00pm		
Amenities	Goals, Bleachers, Restrooms		



# Arlington County Rectangle Fields

## L55 Wakefield High School

GIS ID	Field Name	
<b>R36</b>	<b>Wakefield / Chesterfield HS</b>	
GRASP® Score	GRASP® Field Element	
<b>2</b>	General Field Score	
<b>2</b>	Turf	
<b>0</b>	SynTurf	
<b>1</b>	Irrigation	
<b>0</b>	Lighting	ADA Red Flag <i>Limited access</i>
<b>2</b>	Goals	
<b>1</b>	Bleachers	
<b>2</b>	Team Storage	Comments
<b>1</b>	Run Out Area	<i>Bermuda. Nice field but a couple bare spots</i>
<b>0</b>	Scoreboard	
<b>0</b>	PressBox	
<b>1</b>	WarmUp	
<b>3</b>	General Field Drainage	

### Additional Information

Classification	Arlington Public Schools	Permits	Permit Only
Prim/Sec	Primary	Age Range	Youth
Grass	Bermuda	Community	No
Synthetic	No	Area Mgr	Kevin Stalica
Irrigation	Yes	Sports Play	Soccer
Lighted	No	Regulation	None
Light Notes	N/A		
Amenities	Junior and Full Size Goals, Bleachers		





# Arlington County Rectangle Fields

## L55 Wakefield High School

GIS ID	Field Name	
<b>R37</b>	<b>Wakefield High School - Aux. Field</b>	
GRASP® Score	GRASP® Field Element	
<b>1</b>	General Field Score	
<b>1</b>	Turf	
<b>0</b>	SynTurf	
<b>0</b>	Irrigation	ADA Red Flag
<b>0</b>	Lighting	<i>Limited access</i>
<b>0</b>	Goals	
<b>0</b>	Bleachers	
<b>0</b>	Team Storage	Comments
<b>-1</b>	Run Out Area	<i>New sod</i>
<b>0</b>	Scoreboard	
<b>0</b>	PressBox	
<b>0</b>	WarmUp	
<b>2</b>	General Field Drainage	

### Additional Information

Classification	Arlington Public Schools	Permits	Permit Only
Prim/Sec	Secondary	Age Range	Youth
Grass	Bermuda	Community	No
Synthetic	No	Area Mgr	Kevin Stalica
Irrigation	No	Sports Play	Soccer
Lighted	No	Regulation	None
Light Notes	N/A		
Amenities	None		



# Arlington County Diamond Fields

## L55 Wakefield High School

GIS ID                      Field Name  
**D31**                        **Wakefield High School #1**

GRASP®                    GRASP®  
 Score                        Field Element

3	General Field Score	
3	Infield Condition	
3	Turf Condition	
1	Irrigation	
3	Field Lighting	ADA Red Flag
3	Backstop	
3	Dugouts	
3	Fencing	
3	Warm Up (Batting Cage, Bullpen, etc)	General Comments
3	General Drainage	
3	Bleachers	
1	Scoreboard	
1	Press Box	
1	Team Storage	

---

### Additional Information

Classification	Arlington Public Schools	Permits	Permit Only
Pri/Sec	Primary	Age Range	Youth and Adult
Grass	Bermuda	Community	No
Irrigation	Yes	Area Mgr	Kevin Stalica
Lighted	Yes	Sports Play	Baseball
Light Notes	Musco Dark Sky / 11:00pm	Regulation	90ft Baseball
Amenities	Backstop, Covered Dugouts, Bullpens, Press Box, Scoreboard, Bleachers, Outfield Fence, Batting Cage, Concessions, Restrooms		



# Arlington County Diamond Fields

## L55 Wakefield High School

GIS ID                      Field Name  
**D32**                      **Wakefield High School #2**

GRASP®                      GRASP®  
 Score                      Field Element

3	General Field Score	
3	Infield Condition	
3	Turf Condition	
1	Irrigation	
3	Field Lighting	ADA Red Flag
3	Backstop	
3	Dugouts	
3	Fencing	
3	Warm Up (Batting Cage, Bullpen, etc)	General Comments
3	General Drainage	
3	Bleachers	
1	Scoreboard	
1	Press Box	
2	Team Storage	

---

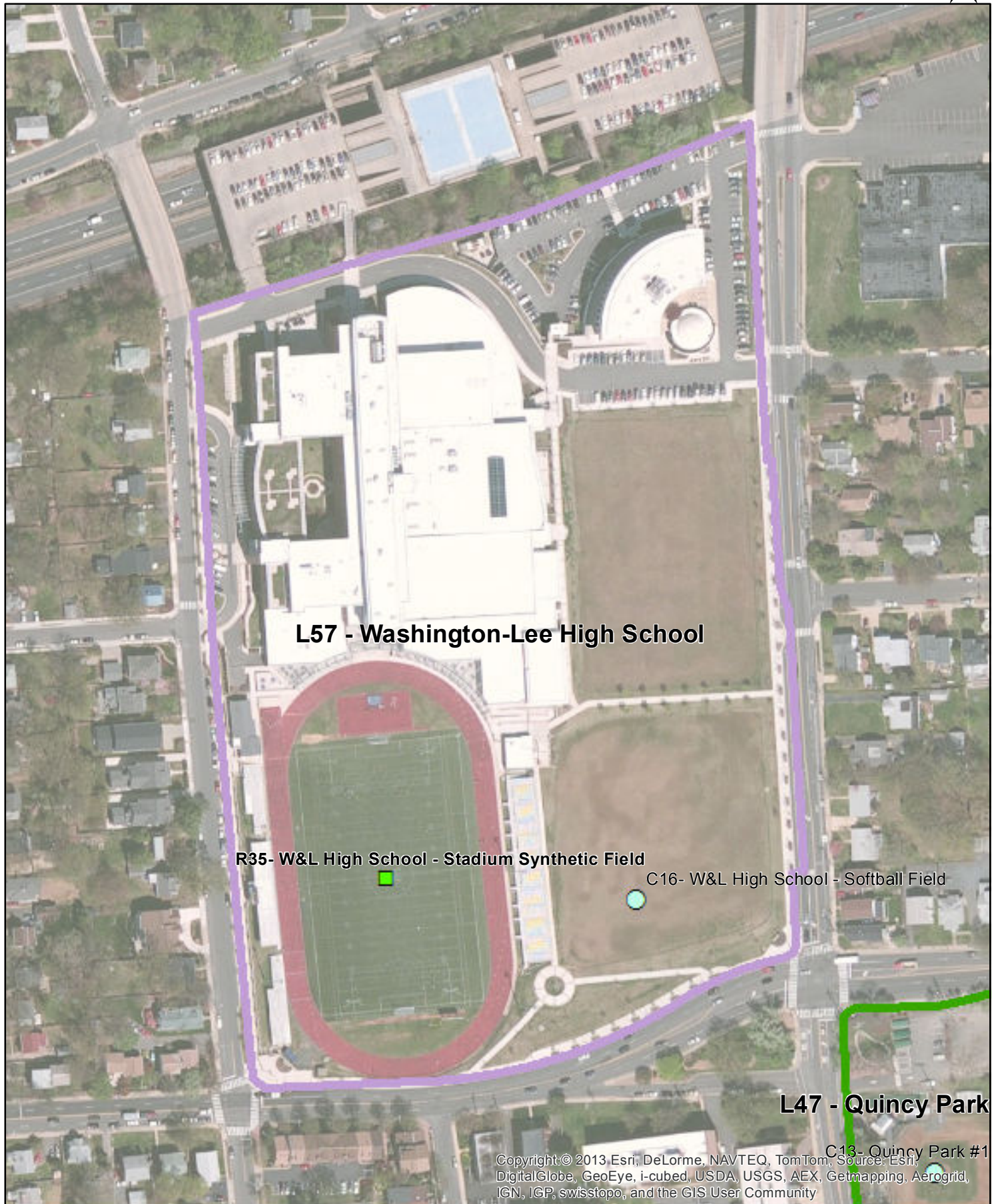
### Additional Information

Classification	Arlington Public Schools	Permits	Permit Only
Pri/Sec	Primary	Age Range	Youth
Grass	Bermuda	Community	No
Irrigation	Yes	Area Mgr	Kevin Stalica
Lighted	Yes	Sports Play	Softball
Light Notes	Musco Dark Sky / 11:00pm	Regulation	Girls Softball
Amenities	Backstop, Covered Dugouts, Bullpens, Press Box, Scoreboard, Bleachers, Outfield Fence, Batting Cage, Concessions, Restrooms		

**THIS PAGE INTENTIONALLY LEFT BLANK**

**L57**  
**Washington-Lee High School**

- Legend**
- Rectangle
  - Public Parks
  - ◆ Diamond
  - Private Open Space
  - Combination Field
  - School
  - ▲ Open Turf/Other Field (not assessed)







# Arlington County Fields Assessment Review

GIS ID            Location Name  
**L57**            **Washington-Lee High School**

GRASP®  
Score

GRASP®  
Modifier Element

<b>3</b>	Restroom
<b>2</b>	Parking
<b>2</b>	Security/Egress Lighting
<b>0</b>	Shade Shelter
<b>0</b>	Drinking Water
<b>2</b>	Concessions
<b>0</b>	Playground
<b>0</b>	Maintenance Storage

ADA Red Flag

Comments

*Nice high school*

## L57 Washington-Lee High School

GIS ID	Field Name	
<b>R35</b>	<b>W&amp;L High School - Stadium Synthetic Field</b>	
GRASP® Score	GRASP® Field Element	
<b>3</b>	General Field Score	
<b>3</b>	Turf	
<b>3</b>	SynTurf	
<b>0</b>	Irrigation	
<b>3</b>	Lighting	ADA Red Flag
<b>3</b>	Goals	
<b>3</b>	Bleachers	
<b>2</b>	Team Storage	Comments
<b>1</b>	Run Out Area	<i>Stadium with new synthetic being installed</i>
<b>1</b>	Scoreboard	
<b>1</b>	PressBox	
<b>1</b>	WarmUp	
<b>3</b>	General Field Drainage	

### Additional Information

Classification	Arlington Public Schools	Permits	Permit Only
Prim/Sec	N/A - Synthetic	Age Range	Youth and Adult
Grass	Synthetic	Community	No
Synthetic	Yes	Area Mgr	Lyndell Core
Irrigation	N/A - Synthetic	Sports Play	Soccer, Flag Football, Tackle Football, Lacrosse, Field Hockey, Ultimate Frisbee
Lighted	Yes	Regulation	Soccer, Field Hockey, Men's and Women's Lacrosse, Football
Light Notes	Musco Dark Sky / 11:00pm		
Amenities	Goals, Pressbox, Ticket Booth, Concession Stand, Track, Player Benches, Bleachers, Restrooms		



# Arlington County Combination Fields

## L57 Washington-Lee High School

GIS ID Field Name  
C16 W&L High School - Softball Field

GRASP® GRASP® GRASP® GRASP®  
Field Element Score Field Element

Diamond Scoring

3	General Field Score
3	Infield
3	Turf
1	Irrigation
3	Lighting
3	Backstop
3	Dugouts
3	Fencing
3	Warmup
3	Bleachers
1	Scoreboard
1	Pressbox
3	Team Storage

Rectangle Scoring

3	General Field Score
3	Turf
1	Irrigation
3	Lighting
3	Bleacher
0	Goals
1	Runout
1	Scoreboard
0	Press Box
0	Warmup Area
3	Team Storage

ADA Red Flag

General Comments:

Good Ada access to bleachers

3 General Drainage

---

### Additional Information

Classification	Arlington Public Schools	Permits	Permit Only
Prim/Sec	Primary	Age Range	Youth
Grass	Bermuda	Community	No
Irrigation	Yes	Area Mgr	Lyndell Core
Lighted	Yes	Sports Play	Softball, Flag Football, Soccer, Lacrosse
Light Notes	Musco Dark Sky / 11:00pm	Regulation	Girls Softball
Amenities	Pressbox, Backstop, Bleachers, Covered Dugouts, Bullpens, Batting Cage, Portable Outfield Fence		

# L58 Westover Park

**Legend**

■ Rectangle

◆ Diamond

○ Combination Field

▲ Open Turf/Other Field (not assessed)

● Public Parks

● Private Open Space

● School





# Arlington County Fields Assessment Review

GIS ID      Location Name  
**L58**      **Westover Park**

GRASP®  
Score

GRASP®  
Modifier Element

<b>3</b>	Restroom
<b>2</b>	Parking
<b>0</b>	Security/Egress Lighting
<b>3</b>	Shade Shelter
<b>3</b>	Drinking Water
<b>0</b>	Concessions
<b>2</b>	Playground
<b>2</b>	Maintenance Storage

ADA Red Flag

Comments





# Arlington County Rectangle Fields

## L58 Westover Park

GIS ID: **R39** Field Name: **Westover Park - Rectangular**

GRASP® Score: GRASP® Field Element

1	General Field Score	
1	Turf	
0	SynTurf	
1	Irrigation	ADA Red Flag
0	Lighting	
1	Goals	
0	Bleachers	
0	Team Storage	Comments
1	Run Out Area	<i>Rough community field with bermuda. Drainage issue on edges</i>
0	Scoreboard	
0	PressBox	
0	WarmUp	
1	General Field Drainage	

### Additional Information

Classification	County Parkland	Permits	Permit Takes Priority
Prim/Sec	Primary	Age Range	Youth and Adult
Grass	Bermuda	Community	Community Drop-In with Limited Programming
Synthetic	No	Area Mgr	Kevin Stalica
Irrigation	Yes	Sports Play	Soccer
Lighted	No	Regulation	Junior Soccer
Light Notes	N/A		
Amenities	Junior Goals		

## L58 Westover Park

GIS ID                      Field Name

**D33**                        **Westover Park #1**

GRASP®                    GRASP®  
Score                        Field Element

2	General Field Score	
2	Infield Condition	
2	Turf Condition	
1	Irrigation	
0	Field Lighting	ADA Red Flag
2	Backstop	<i>Limited access</i>
1	Dugouts	
2	Fencing	
3	Warm Up (Batting Cage, Bullpen, etc)	General Comments
2	General Drainage	<i>Could be pretty nice field</i>
1	Bleachers	
0	Scoreboard	
0	Press Box	
2	Team Storage	

---

### Additional Information

Classification	County Parkland	Permits	Permit Takes Priority
Pri/Sec	Primary	Age Range	Youth
Grass	Cool Season	Community	No
Irrigation	Yes	Area Mgr	Kevin Stalica
Lighted	No	Sports Play	Baseball
Light Notes	N/A	Regulation	None
Amenities	Backstop, Bleachers, Outfield Fence, Restrooms		



# Arlington County Diamond Fields

## L58 Westover Park

GIS ID Field Name

**D34** **Westover Park #2**

GRASP® GRASP®  
Score Field Element

1	General Field Score	
1	Infield Condition	
1	Turf Condition	
0	Irrigation	
0	Field Lighting	ADA Red Flag
1	Backstop	Limited access
1	Dugouts	
0	Fencing	
0	Warm Up (Batting Cage, Bullpen, etc)	General Comments
2	General Drainage	Limited in size by other field
1	Bleachers	
0	Scoreboard	
0	Press Box	
0	Team Storage	

---

### Additional Information

Classification	County Parkland	Permits	Permit Takes Priority
Pri/Sec	Secondary	Age Range	Youth
Grass	Cool Season	Community	No
Irrigation	No	Area Mgr	Kevin Stalica
Lighted	No	Sports Play	Baseball
Light Notes	N/A	Regulation	None
Amenities	Backstop, Bleachers, Benches, Restrooms		

**THIS PAGE INTENTIONALLY LEFT BLANK**

# L59 Williamsburg Middle School

- Legend**
- Rectangle
  - Diamond
  - Combination Field
  - Open Turf/Other Field (not assessed)
  - Public Parks
  - Private Open Space
  - School







# Arlington County Fields Assessment Review

GIS ID            Location Name  
**L59**            **Williamsburg Middle School**

GRASP®  
Score

GRASP®  
Modifier Element

<b>3</b>	Restroom
<b>2</b>	Parking
<b>0</b>	Security/Egress Lighting
<b>0</b>	Shade Shelter
<b>2</b>	Drinking Water
<b>0</b>	Concessions
<b>1</b>	Playground
<b>2</b>	Maintenance Storage

ADA Red Flag

Comments

*School grounds are currently under construction. Assume this will be a top tier fields and facility once complete.*

## L59 Williamsburg Middle School

GIS ID **R40** Field Name **Williamsburg Middle School #1**

GRASP® Score GRASP® Field Element

<b>3</b>	General Field Score	
<b>3</b>	Turf	
<b>3</b>	SynTurf	
<b>0</b>	Irrigation	ADA Red Flag
<b>0</b>	Lighting	
<b>3</b>	Goals	
<b>3</b>	Bleachers	
<b>2</b>	Team Storage	Comments
<b>1</b>	Run Out Area	<i>Assumed scoring and location</i>
<b>0</b>	Scoreboard	
<b>1</b>	PressBox	
<b>1</b>	WarmUp	
<b>3</b>	General Field Drainage	

### Additional Information

Classification	Arlington Public Schools	Permits	Permit Takes Priority
Prim/Sec	N/A - Synthetic	Age Range	Youth and Adult
Grass	Synthetic	Community	No
Synthetic	Yes	Area Mgr	Kevin Stalica
Irrigation	N/A - Synthetic	Sports Play	Soccer, Ultimate Frisbee
Lighted	No	Regulation	None
Light Notes	N/A		
Amenities	Full and Crosswise Junior Goals, School Restroom Accessible from Outside, Bleachers, Player Benches		



# Arlington County Rectangle Fields

## L59 Williamsburg Middle School

GIS ID: **R41** Field Name: **Williamsburg Middle School #2**

GRASP® Score: GRASP® Field Element

<b>3</b>	General Field Score	
<b>3</b>	Turf	
<b>3</b>	SynTurf	
<b>0</b>	Irrigation	ADA Red Flag
<b>0</b>	Lighting	
<b>3</b>	Goals	
<b>3</b>	Bleachers	
<b>2</b>	Team Storage	Comments
<b>1</b>	Run Out Area	<i>Non lighted synthetic fields</i>
<b>0</b>	Scoreboard	
<b>0</b>	PressBox	
<b>1</b>	WarmUp	
<b>3</b>	General Field Drainage	

### Additional Information

Classification	Arlington Public Schools	Permits	Permit Takes Priority
Prim/Sec	N/A - Synthetic	Age Range	Youth and Adult
Grass	Synthetic	Community	No
Synthetic	Yes	Area Mgr	Kevin Stalica
Irrigation	N/A - Synthetic	Sports Play	Soccer, Ultimate Frisbee
Lighted	No	Regulation	None
Light Notes	N/A		
Amenities	Full and Crosswise Junior Goals, School Restroom Accessible from Outside, Bleachers, Player Benches		



# Arlington County Combination Fields

## L59 Williamsburg Middle School

GIS ID C17 Field Name Williamsburg Middle School #3

GRASP®	GRASP® Field Element	GRASP® Score	GRASP® Field Element
Diamond Scoring		Rectangle Scoring	
<input type="text" value="2"/>	General Field Score	<input type="text" value="3"/>	General Field Score
<input type="text" value="3"/>	Infield	<input type="text" value="3"/>	Turf
<input type="text" value="3"/>	Turf	<input type="text" value="1"/>	Irrigation
<input type="text" value="1"/>	Irrigation	<input type="text" value="0"/>	Lighting
<input type="text" value="0"/>	Lighting	<input type="text" value="0"/>	Bleacher
<input type="text" value="2"/>	Backstop	<input type="text" value="0"/>	Goals
<input type="text" value="1"/>	Dugouts	<input type="text" value="1"/>	Runout
<input type="text" value="0"/>	Fencing	<input type="text" value="0"/>	Scoreboard
<input type="text" value="0"/>	Warmup	<input type="text" value="0"/>	Press Box
<input type="text" value="0"/>	Bleachers	<input type="text" value="0"/>	Warmup Area
<input type="text" value="0"/>	Scoreboard	<input type="text" value="0"/>	Team Storage
<input type="text" value="0"/>	Pressbox		
<input type="text" value="0"/>	Team Storage		

ADA Red Flag

General Comments:

It's a nice field but lacks field fencing and dugouts limits higher scoring

General Drainage

---

### Additional Information

Classification	Arlington Public Schools	Permits	Permit Only
Prim/Sec	Primary	Age Range	Youth
Grass	Bermuda	Community	No
Irrigation	Yes	Area Mgr	Kevin Stalica
Lighted	No	Sports Play	Baseball, Soccer
Light Notes	N/A	Regulation	46/60 or 50/70 Baseball
Amenities	Backstop, Player Benches, School Restrooms Accessible from Outside		

**THIS PAGE INTENTIONALLY LEFT BLANK**



# L60 Woodlawn Park

**Legend**

-  Rectangle
-  Diamond
-  Combination Field
-  Open Turf/Other Field (not assessed)
-  Public Parks
-  Private Open Space
-  School





# Arlington County Fields Assessment Review

GIS ID            Location Name  
**L60**            **Woodlawn Park**

GRASP® Score	GRASP® Modifier Element
<b>0</b>	Restroom
<b>2</b>	Parking
<b>0</b>	Security/Egress Lighting
<b>0</b>	Shade Shelter
<b>0</b>	Drinking Water
<b>0</b>	Concessions
<b>2</b>	Playground
<b>0</b>	Maintenance Storage

ADA Red Flag

Comments

## L60 Woodlawn Park

GIS ID: **R42** Field Name: **Woodlawn Park / Hospice**

GRASP® Score: GRASP® Field Element

<b>2</b>	General Field Score	
<b>2</b>	Turf	
<b>0</b>	SynTurf	
<b>0</b>	Irrigation	ADA Red Flag
<b>0</b>	Lighting	<i>Limited access</i>
<b>0</b>	Goals	
<b>0</b>	Bleachers	
<b>0</b>	Team Storage	Comments
<b>1</b>	Run Out Area	<i>Decent size</i>
<b>0</b>	Scoreboard	
<b>0</b>	PressBox	
<b>0</b>	WarmUp	
<b>2</b>	General Field Drainage	

### Additional Information

Classification	County Parkland	Permits	Permit Takes Priority
Prim/Sec	Secondary	Age Range	Youth
Grass	Cool Season	Community	No
Synthetic	No	Area Mgr	Kevin Stalica
Irrigation	No	Sports Play	Soccer
Lighted	No	Regulation	None
Light Notes	N/A		
Amenities	None		

**THIS PAGE INTENTIONALLY LEFT BLANK**



# L61 Woodmont Center

Legend


 Rectangle

 Diamond

 Combination Field

 Open Turf/Other Field (not assessed)

 Public Parks

 Private Open Space

 School







# Arlington County Fields Assessment Review

GIS ID            Location Name  
**L61**            **Woodmont Center**

GRASP® Score	GRASP® Modifier Element
<b>2</b>	Restroom
<b>2</b>	Parking
<b>0</b>	Security/Egress Lighting
<b>0</b>	Shade Shelter
<b>1</b>	Drinking Water
<b>0</b>	Concessions
<b>3</b>	Playground
<b>0</b>	Maintenance Storage

ADA Red Flag  
*Limited access*

Comments  
*Restroom and drinking water in community center*



# Arlington County Rectangle Fields

## L61 Woodmont Center

GIS ID: **R43** Field Name: **Woodmont Center and Park**

GRASP® Score: GRASP® Field Element

2	General Field Score	
2	Turf	
0	SynTurf	
0	Irrigation	ADA Red Flag
0	Lighting	
0	Goals	
0	Bleachers	
0	Team Storage	Comments
-1	Run Out Area	<i>Really just a practice area open space Very small</i>
0	Scoreboard	
0	PressBox	
0	WarmUp	
2	General Field Drainage	


### Additional Information

Classification	County Parkland	Permits	Permit Takes Priority
Prim/Sec	Secondary	Age Range	Youth
Grass	Cool Season	Community	No
Synthetic	No	Area Mgr	Kevin Stalica
Irrigation	No	Sports Play	Soccer
Lighted	No	Regulation	None
Light Notes	N/A		
Amenities	None		

**THIS PAGE INTENTIONALLY LEFT BLANK**

# L62 Zachary Taylor Elementary School

**Legend**

-  Rectangle
-  Diamond
-  Combination Field
-  Open Turf/Other Field (not assessed)
-  Public Parks
-  Private Open Space
-  School





# Arlington County Fields Assessment Review

GIS ID            Location Name  
**L62**            **Zachary Taylor Elementary School**

GRASP®  
Score

GRASP®  
Modifier Element

<b>1</b>	Restroom
<b>2</b>	Parking
<b>0</b>	Security/Egress Lighting
<b>0</b>	Shade Shelter
<b>0</b>	Drinking Water
<b>0</b>	Concessions
<b>3</b>	Playground
<b>0</b>	Maintenance Storage

ADA Red Flag

Comments

*Portable classroom in field*





# Arlington County Combination Fields

## L62 Zachary Taylor Elementary School

GIS ID            Field Name  
 C18              Zachary Taylor Elementary School #1

GRASP®      GRASP®            GRASP®      GRASP®  
                   Field Element      Score          Field Element

**Diamond Scoring**

1	General Field Score
2	Infield
2	Turf
0	Irrigation
0	Lighting
2	Backstop
2	Dugouts
1	Fencing
0	Warmup
0	Bleachers
0	Scoreboard
0	Pressbox
0	Team Storage

**Rectangle Scoring**

1	General Field Score
2	Turf
0	Irrigation
0	Lighting
0	Bleacher
0	Goals
-1	Runout
0	Scoreboard
0	Press Box
0	Warmup Area
0	Team Storage

ADA Red Flag

General Comments:

Poor drainage. Portable limits function

1      General Drainage

---

**Additional Information**

Classification	Arlington Public Schools	Permits	Permit Takes Priority
Prim/Sec	Secondary	Age Range	Youth
Grass	Cool Season	Community	No
Irrigation	No	Area Mgr	Kevin Stalica
Lighted	No	Sports Play	Baseball, Soccer
Light Notes	N/A	Regulation	None
Amenities	Backstop		



# Arlington County Combination Fields

## L62 Zachary Taylor Elementary School

GIS ID Field Name  
C19 Zachary Taylor Elementary School #2

GRASP®	GRASP® Field Element	GRASP® Score	GRASP® Field Element
Diamond Scoring		Rectangle Scoring	
<input type="text" value="2"/>	General Field Score	<input type="text" value="2"/>	General Field Score
<input type="text" value="1"/>	Infield	<input type="text" value="2"/>	Turf
<input type="text" value="2"/>	Turf	<input type="text" value="0"/>	Irrigation
<input type="text" value="0"/>	Irrigation	<input type="text" value="0"/>	Lighting
<input type="text" value="0"/>	Lighting	<input type="text" value="0"/>	Bleacher
<input type="text" value="2"/>	Backstop	<input type="text" value="0"/>	Goals
<input type="text" value="2"/>	Dugouts	<input type="text" value="1"/>	Runout
<input type="text" value="1"/>	Fencing	<input type="text" value="0"/>	Scoreboard
<input type="text" value="0"/>	Warmup	<input type="text" value="0"/>	Press Box
<input type="text" value="0"/>	Bleachers	<input type="text" value="0"/>	Warmup Area
<input type="text" value="0"/>	Scoreboard	<input type="text" value="0"/>	Team Storage
<input type="text" value="0"/>	Pressbox		
<input type="text" value="0"/>	Team Storage		

ADA Red Flag  
*Limited access*

General Comments:  
Poor drainage to backstop which washes out. Incomplete fencing

General Drainage

---

### Additional Information

Classification	Arlington Public Schools	Permits	Permit Takes Priority
Prim/Sec	Secondary	Age Range	Youth
Grass	Cool Season	Community	No
Irrigation	No	Area Mgr	Kevin Stalica
Lighted	No	Sports Play	Baseball, Soccer
Light Notes	N/A	Regulation	None
Amenities	Backstop		