

**ARLINGTON  
JUVENILE & DOMESTIC  
RELATIONS DISTRICT  
COURT SERVICES UNIT**



*Justice Through Responsive  
Quality Service & Teamwork*



# Table of Contents

|  |    |
|--|----|
| Arlington Juvenile & Domestic Relations District Court -----       | 4  |
| Judges' Chambers -----   | 5  |
| Judge Wiggins' Retirement Reception -----                          | 6  |
| Clerk's Office—Mission -----                                       | 7  |
| Clerk's Office—Data -----  | 8  |
| Court Service Unit—Mission Statement and Organizational Chart----- | 9  |
| 2016 Staff Members -----   | 10 |
| Staffing Changes -----   | 11 |
| Administrative Unit-Mission Statement and Group Photo -----        | 12 |
| Intake Unit-Mission Statement and Group Photo-----                 | 13 |
| Intake Highlights -----  | 14 |
| Intake Offenses -----  | 15 |
| Detention Diversion -----  | 19 |
| Northern Virginia Juvenile Detention Home -----                    | 20 |
| Diversion-----   | 21 |
| Adult Probation Unit-Mission Statement and Photo-----              | 22 |
| Adult Probation Services -----                                     | 23 |
| Juvenile Probation Units-Mission Statement and Photos-----         | 24 |
| Juvenile Probation Services -----                                  | 25 |
| Juvenile Demographics -----  | 26 |
| Community Service -----  | 27 |
| Juvenile Parole Services-----                                      | 28 |
| Psychological Services -----                                       | 29 |
| Community-Based Programs Overview-----                             | 30 |
| Andrew B. Ferrari Argus House -----                                | 31 |
| Aurora House -----   | 32 |
| Girls' Outreach-----   | 33 |
| Young Achievers -----  | 34 |
| Special Programs Overview -----                                    | 35 |

## “EXCUSE OUR DUST”

The JDRC Annual Report for FY 2016 is abbreviated pending redesign of program goals and data collection.

## Arlington Juvenile & Domestic Relations District Court

*“It is the intention of this law that in all proceedings the welfare of the child and the family, the safety of the community and the protection of the rights of victims are the paramount concerns of the Commonwealth and to the end that these purposes may be attained, the judge shall possess all necessary and incidental powers and authority, whether legal or equitable in their nature.”*

§ 16.1-227, 1950 Code of Virginia.



Officers of the 17th District Juvenile and Domestic Relations District Court (l. to r.): **Earl J. Conklin**, Director; **Amy Burnham**, Clerk; **Hon. Esther L. Wiggins**, Chief Judge; **Hon. George D. Varoutsos**, Judge



# JUDGES' CHAMBERS



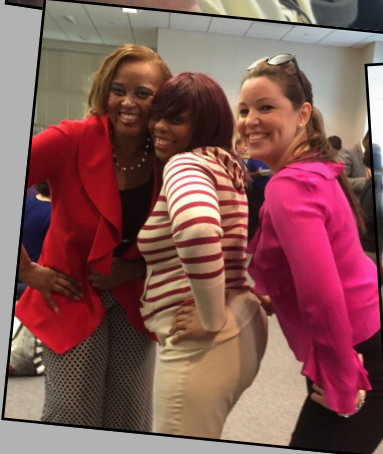
(l. to r.) **Hon. George D. Varoutsos**, Chief Judge;  
**Shany Benitah**, Executive Admin. Assistant; **Hon. Esther L. Wiggins**, Judge



Students who interned for Judge Varoutsos, l. to r.: Jennifer Hauser, (George Mason Law School); T.J. Benedict (University of Richmond Law School); and Chiesarrthe Staurulakis (University of Richmond Law School); not pictured, Coleen L'etoile (Providence College) and Talha Farouq (Yorktown High School).



# Judge Esther Wiggins Retirement Receptions





# CLERK of COURT

## ***Mission***

To serve the Court by preparing and dispersing judicial orders, assisting with Court procedures and providing efficient services for the people coming before the Court, other agencies, attorneys and fellow employees within the provisions of the Code of Virginia and Virginia Supreme Court policies



*Front row (l to r): Ashley Salinas and Teresa Lara, Deputy Clerks;  
Back row (l to r): Darcee King, Supervising Deputy Clerk; Margarie Jeffers, Evelyn Ramos,  
Joyce Janeway, and Shana Gooden, Deputy Clerks; Amy Burnham, Clerk of Court*

## **Program Highlights:**

- The Clerk's Office began using the Juvenile and Domestic Relations Document Imaging System (JDIS) to electronically scan court documents.
- The Clerk's Office assisted in the planning and retirement celebration of Judge Esther L. Wiggins.
- Along with the day to day administration duties of the Court, the Clerk's Office manages the Driver's License Ceremony that is conducted each month. About 70 newly licensed drivers attend the ceremony with their parents. The attendees watch a video hosted by Katie Couric, hear presentations from a police officer and lawyer, and receive their licenses from the judge.
- Ms. Burnham was a member of the Association of Clerks of the District Courts of Virginia Executive Council and a member of the District Court Staffing Model Committee for the Office of the Executive Secretary of the Supreme Court of Virginia.

# DATA

## Court Case Comparisons

| <b>NEW CASES</b>                        | <b>FY '16</b> | <b>FY '15</b> | <b>% +/-</b> |
|---|---------------|---------------|--------------|
| <b><u>JUVENILE</u></b>                  |               |               |              |
| TRAFFIC                                 | 100           | 120           | -17%         |
| DELINQUENCY                             | 945           | 867           | 9%           |
| CUSTODY/VISITATION                      | 1,316         | 1,120         | 18%          |
| STATUS OFFENSES                         | 245           | 175           | 40%          |
| <b>TOTAL</b>                            | <b>2,606</b>  | <b>2,382</b>  | <b>9%</b>    |
| <b><u>DOMESTIC RELATIONS</u></b>        |               |               |              |
| MISDEMEANORS                            | 418           | 422           | -1%          |
| FELONIES                                | 88            | 124           | -29%         |
| CAPIAS/SHOW CAUSE/OTHER                 | 615           | 513           | 20%          |
| CIVIL SUPPORT                           | 661           | 564           | 17%          |
| CRIMINAL SUPPORT                        | 0             | 0             | #DIV/0!      |
| <b>TOTAL</b>                            | <b>1,364</b>  | <b>1,623</b>  | <b>-16%</b>  |
| <b><u>TOTAL NEW/CONTINUED CASES</u></b> |               |               |              |
| JUVENILE                                | 6,179         | 5,772         | 7%           |
| DOMESTIC RELATIONS                      | 6,287         | 6,321         | -1%          |
| <b>TOTAL</b>                            | <b>12,466</b> | <b>12,093</b> | <b>3%</b>    |
| <b><u>HEARING RESULTS</u></b>           |               |               |              |
| WAIVED JUVENILE                         | 12            | 25            | -52%         |
| FINAL JUVENILE                          | 2,599         | 2,325         | 12%          |
| FINAL DOMESTIC RELATIONS                | 1,899         | 1,751         | 8%           |
| CONTINUED JUVENILE                      | 3,568         | 3,422         | 4%           |
| CONTINUED DOMESTIC RELATIONS            | 2,879         | 2,854         | 1%           |
| <b>TOTAL</b>                            | <b>10,945</b> | <b>10,377</b> | <b>5%</b>    |

Source: Clerk's Office

The Restitution program allows victims of crimes to be compensated for their out-of-pocket expenses. Victims provide documentation of their losses and offenders are ordered to repay that amount through the Clerk's office. The judge or the probation officer determines how long the person has to complete payments.

In FY 2016, the Clerk's Office received \$5,656.96 in restitution.

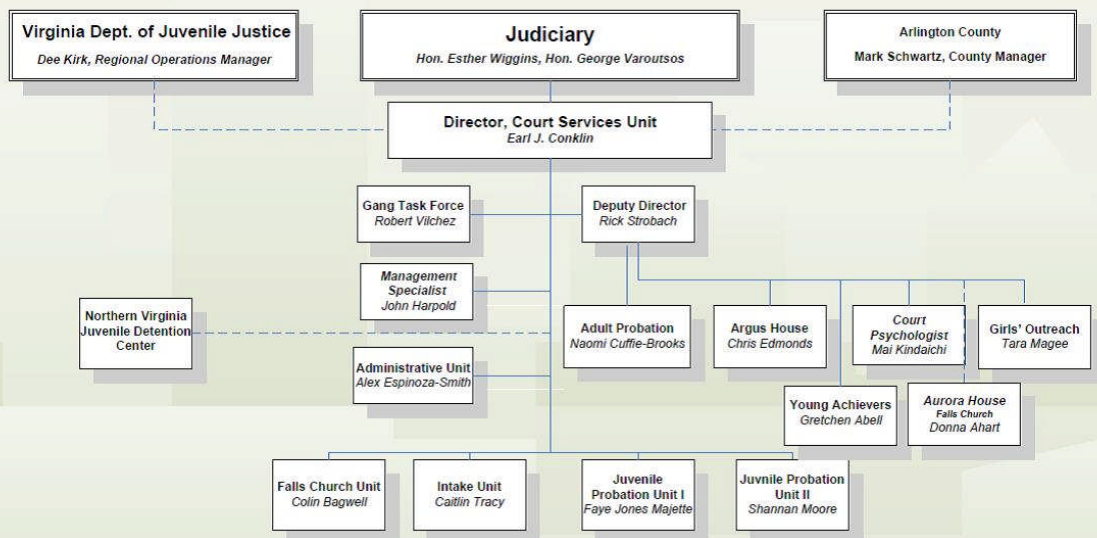
## Arlington Juvenile & Domestic Relations District Court Services Unit

### *Mission*



To provide effective, efficient and quality services, programs and interventions to juveniles, adults, and families while addressing public safety, victim impact, offender accountability and competency development in conformance with court orders, provisions of the Code of Virginia and standards set forth by the Department of Juvenile Justice

### Arlington County Juvenile and Domestic Relations Court Services Unit



June, 2016

# FY 2016 STAFF (as of June, 2016)

Earl J. Conklin, MSW, *Director*

Rick Strobach, MPA, *Deputy Director*

## **Administrative Unit**

Alex Espinoza-Smith, *Supervisor*  
Sylvia Benitah, *Administrative Technician*  
Shany Benitah, *Executive Administrative Assistant*

### *Administrative Assistants:*

Anthony Hines  
A-Hakim Khandoker  
Elizabeth Owens  
Curtina Wilson-Baba

## **Gang Task Force**

Robert Vilchez, BS, *Coordinator*

## **Psychological Services**

Mai Kindaichi, Ph.D.  
*Extern:*  
Amber Gibson, MA

## **Management Specialist**

John Harpold, MA, MSPA

## **Intake**

Caitlin Tracy, *Supervisor*

### *Intake Counselors:*

Erika Yalowitz  
Colleen Zamarly

### *DDP Counselors:*

Oswaldo Castillo, MA, Ed.S.  
Carla Medina, MA

### *DDP Relief Counselors:*

Pam Sejas

### *Hit Duty Counselors:*

Jackson Stasny  
Melissa Villacorta

### *DHS Liaison:*

Fredy Martinez, MS, CSAC

## **Girls' Outreach Program**

Tara Magee, BSW, *Coordinator*

### *Outreach Counselors:*

Romina Abawi, CSAC  
Parisa Bigdeli, MSW

### *Outreach Relief Counselors:*

Mayra Cardenas  
Mary Jean Harford

## **Adult Probation**

Naomi Cuffie-Brooks, MA, *Supervisor*

### *Adult Probation Counselors:*

Rita Brewer, MA, MAFP, NCC, CCFC, CCDVC, CCCJS

Kimberly Dexter, MA, MAC, NCC, CSAC

Joanne E. Hamilton, BA  
Arnaldo Rosado, MA

## **Juvenile Probation-Unit I**

Faye Jones Majette, MPA, *Supervisor*

### *Juvenile Probation Counselors:*

Amy Ashley  
Evelyn Cochis, MSW  
Carmen Cornelison, MFS  
Marvin Dickerson  
Erick King  
Lisa Vega

## **Juvenile Probation-Unit II**

Shannan Moore, MS, CSAC, *Supervisor*

### *Juvenile Probation Counselors:*

Jessica Cabrera  
Lacretia Davis  
Tim Coffman  
Kari Gividen  
Niasha John, MS, CSAC

## **Falls Church Probation Office**

Colin Bagwell, MA, *Supervisor*

Autumn Murray, BA, *Probation Counselor*  
Joan Tortorelli, *Senior Administrative Assistant*

## **School Probation Counselors**

Carmen Cornelison, MFS, *Coordinator*

Tony Bentley  
Michael D. Calabro  
Monica Larrieu  
Heather Mizell  
Al Reid  
William Wheeler

## **Andrew B Ferrari Argus House**

Christopher Edmonds, MSW, *Group Home Manager*

Arthur McNeill, *Juvenile Program Coordinator*

Melissa Woods, MA, *Residential Supervisor*

Tina Asinugo, *Administrative Assistant*

### *Group Home Counselors:*

Tyrell Chatman  
Emerson Muhammad Diaz  
Lloyd Murphy  
Andre Taylor, MA

Clarice Kelliebrew, *Food Services Coordinator*

### *Group Home Relief Counselors:*

Bridgette Fonville  
Lauren Hillegas, MSW  
Jennifer Sizer  
Joey Tinsley  
Trevor Tufty  
Jocelyn Vas, MA  
Lawrence Wiley  
Kim Zajac

## **Young Achievers**

Gretchen Abell, MS, CSAC, *Coordinator*

Joseph Jones III, MA, *Counselor*

Maria Caballero, MA, *Mental Health Therapist*

## **Aurora House**

*Vacant, Group Home Manager*

Rachel Kindell, MSW, *Residential Supervisor*

Tania Ponomarenko, Ph.D., LCSW, *Therapist*

Sheila Frost, Sr. *Administrative Assistant*

Siegfried Ogris, *Food Services Coordinator*

### *Residential Counselors:*

Alexandra Fields  
Michelle Shimizu  
Lori Hutcherson  
Jillian Porter

Adrienne Williams, *Overnight Counselor*

### *Group Home Relief Counselors:*

Lucy Beard  
Annie Joyner  
Caren Gillison  
Stephanie Lewis-Hawkins  
Jamala Williams  
Michelle Munday  
Kizzy Collins



# STAFF HIGHLIGHTS

**Retired with 35 Years of Service**  
Arthur McNeil

**Retired with 28 Years of Service**  
Faye Jones Majette



*Faye Jones Majette, retired probation supervisor says “goodbye” to probation counselors and CSU co-workers at retirement luncheon in February 2016*

**20 years of service**  
Tina Asinugo

**10 years of service**  
Clarice Kelliebrew  
Erick King

**New Hires**  
Kevin Daniel  
Jackson Stasny  
Melissa Woods

## **Administrative Unit**

### ***Mission***

*To render breakthrough administrative services to the Court Services Unit, public, and other agencies by processing information, client tracking system, human resources tasks, budgeting and assisting various Court programs with respect and dignity.*



*(from left) Alex Espinoza-Smith, supervisor; Sylvia Benitah, administrative technician; Tina Asinugo, A-Hakim Khandoker, Curtina Wilson-Baba, Anthony Hines, administrative assistants; (not pictured: Elizabeth Owens, administrative assistant).*

*The support that the Administrative Unit provides is vital to the smooth operation of the CSU. This team assists with the processing of court documents that facilitates the administration of justice in Arlington County.*

## Intake Unit



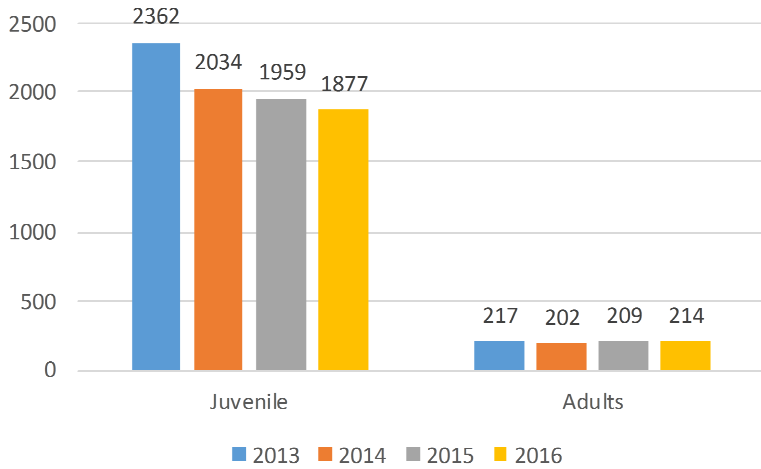
### ***Mission***

*To receive and process civil and criminal complaints as the point of access to the Court, serve as an information and referral source, and provide initial short-term counseling*

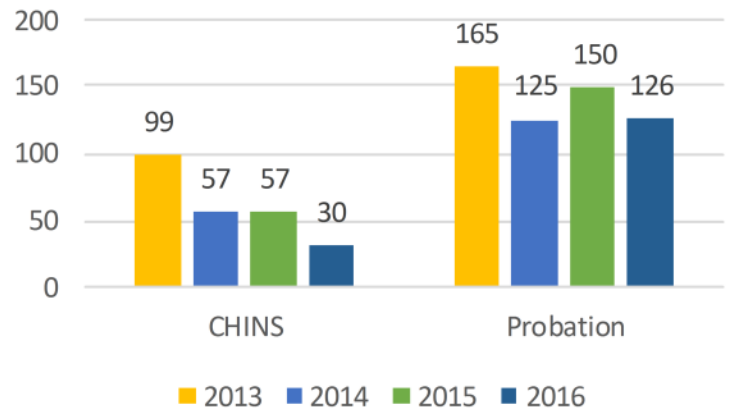
*(l. to r.) Carla Medina, Osvaldo Castillo, DDP Counselors; Fredy Martinez, DHS Liaison; Jackson Stasny, Hit Duty Counselor; Caitlin Tracy, Intake Supervisor; Melissa Villacorta, Hit Duty Counselor; Erika Yalowitz, Colleen Zarny, Intake Counselors.*

# FY 2016 INTAKE HIGHLIGHTS

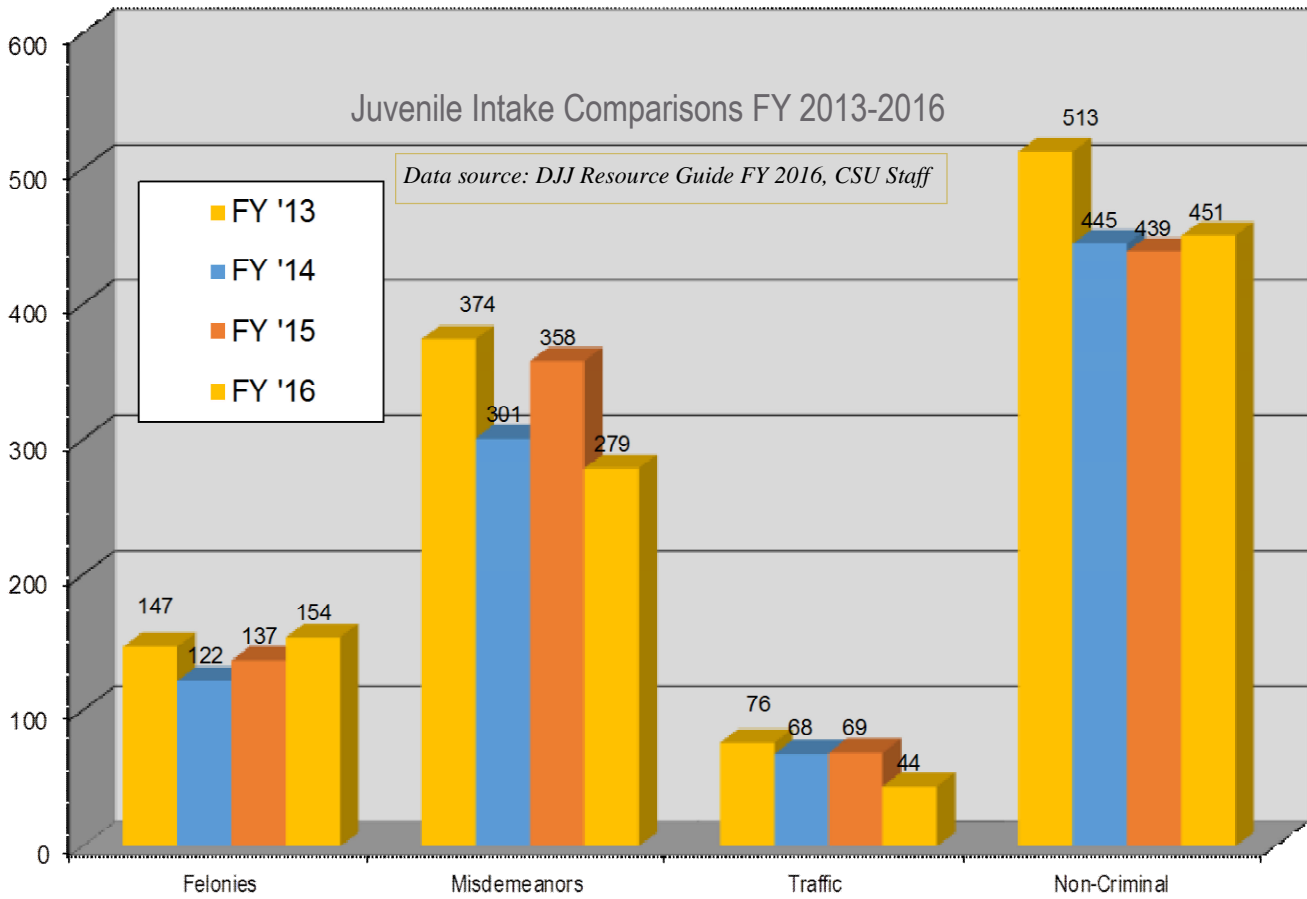
## Complaints Processed by Intake 2013-2016



## Violations Issued by Intake 2013-2016



## Juvenile Intake Comparisons FY 2013-2016





# DATA

## FY 2016 INTAKE OFFENSES

| COMPLAINT DESCRIPTION   | TYPE | FY 2016 | FY 2015 | CHANGE |
|---|------|---------|---------|--------|
| ABUSIVE AND INSULTING LANGUAGE//Direct Curse Or Abusive Language To Another                                   | M    | 2       | 0       | 200%   |
| ALCOHOL//Drinking In Public   | M    | 0       | 1       | -100%  |
| ALCOHOL/Sell/Sell To Person Intoxicated, Interdicted, Or Less Than 21   | M    | 0       | 1       | -100%  |
| ALCOHOL/Under 21 Years Old/Purchase, Possession Or Consumption By Person Less Than Age 21                     | M    | 22      | 41      | -46%   |
| ALCOHOL/Under 21 Years Old/False Identification Used To Purchase, Attempt To Purchase Or Consume              | M    | 0       | 2       | -200%  |
| ALCOHOL/Under 21 Years Old/First Offender Violation; Possession Etc. Alcohol                                  | M    | 1       | 1       | 0%     |
| ARSON, EXPLOSIVES, BOMBS/Fire - Woods, Etc./Set Fire To Woods, Grass, Fence Damaging Other                    | M    | 0       | 1       | -100%  |
| ARSON, EXPLOSIVES, BOMBS/Threat Or False Communication/Offender Under 15                                      | M    | 0       | 1       | -100%  |
| ASSAULT/Simple Assault/Simple Assault, On A Teacher, Principal Etc.   | M    | 3       | 3       | 0%     |
| ASSAULT/Simple Assault/Simple Assault / Assault And Battery   | M    | 34      | 35      | -3%    |
| ASSAULT/Simple Assault/Simple Assault, Against Family Member  | M    | 13      | 14      | -7%    |
| ASSAULT/Other/During Commission Of A Felony   | F    | 1       | 0       | 100%   |
| ASSAULT//Firearm Use In Commission Of Felony-(First Offense)  | F    | 2       | 0       | 200%   |
| ASSAULT/Mob/Shooting, Cutting, Stabbing, Intent To Maim   | F    | 0       | 1       | -100%  |
| ASSAULT/Mob/Simple, By Mob  | M    | 3       | 2       | 50%    |
| ASSAULT//Stabbing, Cutting, Wounding With Malicious Intent  | F    | 3       | 4       | -25%   |
| ASSAULT/Malicious Wounding/Stab, Cut, Wound W/Malicious Intent Victim Perm. Impaired                          | F    | 0       | 2       | -200%  |
| ASSAULT/Law Enforcement, Court, Fire, Medic/Simple Assault On Law Enforcement, Court, Doc, Fire/Medical, Etc. | F    | 1       | 2       | -50%   |
| ASSAULT/Law Enforcement/Fire, Rescue Person/Laser, Pointing At Law Enforcement Officer, P&P Officer Etc.      | M    | 1       | 0       | 100%   |
| ASSAULT/Strangulation/Strangulation Resulting In Wounding Or Bodily Injury                                    | F    | 0       | 1       | -100%  |
| BURGLARY/Tools, Burglarious, Etc./Possession Of Tools W/Intent To Commit Burglary, Robbery Or Larceny         | F    | 10      | 1       | 900%   |
| BURGLARY/Statutory - Larceny, Other Felony O/Dwelling House With Intent To Commit Larceny, A&B, Etc.          | F    | 1       | 2       | -50%   |
| BURGLARY/Statutory - Larceny, Other Felony O/Dwelling With Intent To Commit Larceny, A&B,Etc.-Deadly Weap     | F    | 0       | 1       | -100%  |
| BURGLARY/Statutory - Larceny, Other Felony O/Other Structure With Intent To Commit Larceny, A&B, Etc.         | F    | 2       | 0       | 200%   |
| BURGLARY/Common Law/Dwelling At Night W/Intent To Commit Felony Or Larceny                                    | F    | 1       | 0       | 100%   |
| CONTEMPT OF COURT/General/General - Without A Jury  | S    | 2       | 1       | 100%   |
| CONTEMPT OF COURT/General/Misbehavior In The Presence Of The Court  | S    | 0       | 2       | -100%  |
| CONTEMPT OF COURT/Juvenile And Domestic/Violation Of Juvenile Court Order                                     | S    | 98      | 82      | 20%    |
| CONTEMPT OF COURT/Juvenile And Domestic/Failure To Obey Summons   | S    | 26      | 16      | 63%    |
| CUSTODY/Juvenile And Domestic/Determination Of Custody Required   | J    | 418     | 445     | -6%    |
| CUSTODY/Juvenile And Domestic/Entrustment Agreement   | J    | 3       | 0       | 300%   |
| CUSTODY/Juvenile And Domestic/Relief Of Custody   | J    | 2       | 1       | 100%   |
| CUSTODY/Juvenile And Domestic/Visitation Controversy  | J    | 125     | 118     | 6%     |
| TRAFFIC - MOTORCYCLES, BICYCLES, AN/Mopeds/Under 16-Operate Moped On Street Or Oper. Moped > 30 Mph           | I    | 1       | 2       | -50%   |
| TRAFFIC - MOTORCYCLES & BICYCLES/Motorcycles/Helmet Does Not Meet Safety Standards, Sell                      | M    | 1       | 0       | 100%   |
| DESERTION AND NONSUPPORT/Juvenile And Domestic/Spousal Support, Spouse Seeks After Separated                  | J    | 18      | 19      | -5%    |
| DESERTION AND NONSUPPORT/Juvenile And Domestic/Support Is Subject Of Controversy / Requires Determination     | J    | 204     | 202     | 1%     |
| DISORDERLY CONDUCT//Disorderly Conduct  | M    | 7       | 11      | -36%   |
| TRAFFIC - EQUIPMENT VIOLATIONS/Infraction/Expired Rejection Sticker   | I    | 1       | 1       | 0%     |
| TRAFFIC - EQUIPMENT VIOLATIONS//Seatbelts, Failure To Wear  | I    | 0       | 1       | -100%  |
| FAMILY OFFENSE/Tobacco - Juvenile And Domestic/Purchase, Attempted Purchase Or Possession Of Tobacco By Minor | J    | 7       | 13      | -46%   |

# DATA

## FY 2016 INTAKE OFFENSES

| COMPLAINT DESCRIPTION   | TYPE | FY 2016 | FY 2015 | CHANGE |
|---|------|---------|---------|--------|
| FRAUD/Credit Card Theft/Theft Of Credit Card Or Credit Card Numbers   | F    | 1       | 2       | -50%   |
| FRAUD/Identity Fraud/Obtain Identifying Info. To Avoid Arrest Or Impede Investigation                                 | M    | 10      | 12      | -17%   |
| FRAUD/Forging/Public Record, Forging  | F    | 6       | 5       | 20%    |
| FRAUD/Forging/Public Record, Uttering   | F    | 1       | 0       | 100%   |
| FRAUD/Credit Card Fraud/Less Than \$200 In 6 Month Period   | M    | 1       | 1       | 0%     |
| FRAUD/Fictitious Driver'S License/Possess   | M    | 0       | 1       | -100%  |
| FAILURE TO APPEAR//Fail To Appear In Court For Felony Offense   | F    | 15      | 1       | 1400%  |
| FAILURE TO APPEAR//Fail To Appear In Court For Misdemeanor Offense  | M    | 18      | 19      | -5%    |
| TRAFFIC - HIT AND RUN, ACCIDENT REP/Hit And Run/Damage To Attended Property-Driver Fails To Report (Less Than \$1000) | M    | 0       | 1       | -100%  |
| INTERSTATE COMPACT/Juvenile And Domestic/Return Of Escapes And Absconders - Article V                                 | J    | 6       | 6       | 0%     |
| INTERSTATE COMPACT/Juvenile And Domestic/Cooperative Supervision Of Probationers And Pa-<br>rolees - Article Vii      | J    | 4       | 1       | 300%   |
| OBSTRUCTION OF JUSTICE/Name, False Identity/Falsely Identify Self To Law-Enforcement                                  | M    | 2       | 3       | -33%   |
| OBSTRUCTION OF JUSTICE/False Report/False Statement During Investigation Of Another'S Crime                           | M    | 0       | 1       | -100%  |
| OBSTRUCTION OF JUSTICE//Intimidation Of Police, Judges, Etc. By Threats Or Force                                      | M    | 2       | 0       | 200%   |
| OBSTRUCTION OF JUSTICE/Resisting Arrest/Intimidation/Resisting Arrest, Obstructing Justice W/O<br>Threats Of Force    | M    | 5       | 5       | 0%     |
| OBSTRUCTION OF JUSTICE/Resisting Arrest/Intimidation/Prevent Law Enforcement Officer From<br>Making Arrest            | M    | 2       | 0       | 200%   |
| JUVENILE & DOMESTIC COURT - OTHER/Juvenile And Domestic/Emancipation  | J    | 5       | 1       | 400%   |
| JUVENILE & DOMESTIC COURT - OTHER/Juvenile And Domestic/Emergency Removal   | J    | 47      | 44      | 7%     |
| JUVENILE & DOMESTIC COURT - OTHER/Juvenile And Domestic/Parental Determination  | J    | 29      | 30      | -3%    |
| JUVENILE & DOMESTIC COURT - OTHER/Juvenile And Domestic/Termination Of Parental Rights                                | J    | 26      | 31      | -16%   |
| JUVENILE & DOMESTIC COURT - OTHER/Juvenile And Domestic/Paternity, Relief From Legal De-<br>termination               | J    | 12      | 5       | 140%   |
| JUVENILE & DOMESTIC COURT - OTHER/Juvenile And Domestic/Preliminary Removal Order                                     | J    | 2       | 1       | 100%   |
| PATERNITY/Juvenile And Domestic/Determination Of Paternity  | J    | 0       | 1       | -100%  |
| JUVENILE & DOMESTIC COURT - OTHER/Transfer Supervision/Transfer Supervision To Another<br>City, County Or State       | J    | 0       | 2       | -200%  |
| KIDNAPPING/Force, Deception Or Intimidation/Abduct By Force Without Justification                                     | F    | 0       | 1       | -100%  |
| LARCENY/Receiving/Possession/Larceny \$200 Or More With Intent To Sell Or Distribute                                  | F    | 5       | 11      | -55%   |
| LARCENY/Conspiring/Conspire To Commit Or Assist In Larceny With Aggregate Value Over \$200                            | F    | 0       | 7       | -700%  |
| LARCENY/Concealing, Possessing Merchandise/Shoplift, Alter Price Tags > \$200   | F    | 1       | 0       | 100%   |
| LARCENY/Grand/\$200 Or More Not From Person   | F    | 57      | 65      | -12%   |
| LARCENY/Grand/\$5 Or More From Person   | F    | 3       | 1       | 200%   |
| LARCENY/Petit/Less Than \$200 Not From Person   | M    | 32      | 41      | -22%   |
| LARCENY/Grand/Auto Theft  | F    | 3       | 0       | 300%   |
| LARCENY//Unauthorized Use Of Animal, Auto, Boat Worth \$200 Or More   | F    | 2       | 2       | 0%     |
| LARCENY//Embezzlement, \$200 Or More  | F    | 3       | 1       | 200%   |
| LARCENY//Embezzlement, Less Than \$200  | M    | 1       | 0       | 100%   |
| LARCENY//Receiving Stolen Goods-\$200 Or More   | F    | 2       | 1       | 100%   |
| LARCENY//Receiving Stolen Property < \$200  | M    | 2       | 0       | 200%   |
| TRAFFIC - OPERATOR'S LICENSE/Juvenile/Operate Vehicle While Using Cell Phone  | J    | 1       | 1       | 0%     |
| TRAFFIC - OPERATOR'S LICENSE/Infraction/Address Change, Fail To Notify Dmv  | I    | 1       | 0       | 100%   |
| TRAFFIC - OPERATOR'S LICENSE/Restricted License/Petition To Request Restricted License                                | J    | 1       | 0       | 100%   |
| TRAFFIC - OPERATOR'S LICENSE/Juvenile/Operate Vehicle With More Than 1 Passenger Under<br>Age 21                      | J    | 3       | 3       | 0%     |
| TRAFFIC - OPERATOR'S LICENSE/Juvenile/Operate Vehicle Between Midnight And 4:00 Am                                    | J    | 0       | 1       | -100%  |
| TRAFFIC - OPERATOR'S LICENSE/No License/Drive Without A Valid License   | M    | 6       | 12      | -50%   |
| TRAFFIC - OPERATOR'S LICENSE/License Revoked/License Revoked - Drive While (First Offense)                            | M    | 0       | 3       | -100%  |
| TRAFFIC - OPERATOR'S LICENSE//Drive Without License Or Registration In Possession                                     | I    | 2       | 0       | 200%   |
| TRAFFIC - OPERATOR'S LICENSE/License/Restricted License - Violate Restrictions  | M    | 0       | 4       | -400%  |



# DATA

## FY 2016 INTAKE OFFENSES

| COMPLAINT DESCRIPTION   | TYPE | FY 2016 | FY 2015 | CHANGE |
|---|------|---------|---------|--------|
|   | M    | 9       | 8       | 13%    |
| TRAFFIC - OPERATOR'S LICENSE/Learner's/Temporary Permit - Drive W/O Licensed Operator Or Violate                        | M    | 9       | 8       | 13%    |
| TRAFFIC - OPERATOR'S LICENSE/No License/Drive Without A Valid License, 2nd/Subsequent                                   | M    | 1       | 0       | 100%   |
| TRAFFIC - LIGHTING EQUIPMENT//Headlights-Vehicle Without Two  | I    | 0       | 2       | -200%  |
| GANGS/Participation - School Zone, Commun/Participation In Crime For Benefit/Direction Of Gang - School, Etc.           | F    | 4       | 2       | 100%   |
| GANGS/Participation/Participation In Criminal Act For Benefit Or Direction Of Gang                                      | F    | 1       | 5       | -80%   |
| GANGS/Recruitment/Membership, Use Force Or Threats To Encourage   | F    | 2       | 0       | 200%   |
| GANGS/Recruitment/Felony, Use Force/Threats To Encourage Person To Commit A Felony                                      | F    | 1       | 0       | 100%   |
| TRAFFIC - MOVING VIOLATIONS, GENERA//Follow Too Closely   | I    | 2       | 3       | -33%   |
| TRAFFIC - MOVING VIOLATIONS, GENERA//Improper Turn At Intersection  | I    | 0       | 1       | -100%  |
| TRAFFIC - MOVING VIOLATIONS, GENERA//Right Side, Fail To Drive On   | I    | 1       | 0       | 100%   |
| TRAFFIC - MOVING VIOLATIONS, GENERA//Infraction/Passing On Shoulder Or Off The Highway                                  | I    | 1       | 0       | 100%   |
| TRAFFIC - MOVING VIOLATIONS, GENERA//Signal, None Before Starting, Stopping, Backing, Or Turning                        | I    | 0       | 1       | -100%  |
| TRAFFIC - MOVING VIOLATIONS, GENERA//Entering Highway, Fail To Stop Or Yield Before                                     | I    | 1       | 0       | 100%   |
| TRAFFIC - MOVING VIOLATIONS, GENERA//One Way Street, Drive Wrong Way On   | I    | 0       | 1       | -100%  |
| TRAFFIC - MOVING VIOLATIONS, GENERA//Headlights-Drive At Night Without  | I    | 0       | 1       | -100%  |
| TRAFFIC - MOVING VIOLATIONS, GENERA//Headlights-Drive At Night Without  | I    | 1       | 0       | 100%   |
| TRAFFIC - MOVING VIOLATIONS, GENERA//Speeding At School Crossing  | I    | 2       | 0       | 200%   |
| TRAFFIC - MOVING VIOLATIONS, GENERA//Speeding At School Crossing  | I    | 0       | 3       | -300%  |
| TRAFFIC - MOVING VIOLATIONS, GENERA//Speeding - Business/Residential District   | I    | 0       | 2       | -200%  |
| TRAFFIC - MOVING VIOLATIONS, GENERA//Infraction/Speeding In Residential Area Etc.                                       | I    | 0       | 1       | -100%  |
| TRAFFIC - MOVING VIOLATIONS, GENERA//Infraction/Speeding - Limit Set By Transportation Commissioner                     | I    | 12      | 24      | -50%   |
| MURDER//First Degree  | F    | 1       | 0       | 100%   |
| NARCOTICS/Paraphernalia, Drug/Drug Paraphernalia-Sale, Poss. With Intent To Sell, Etc                                   | M    | 1       | 0       | 100%   |
| NARCOTICS/Marijuana/Possess - First Offense   | M    | 42      | 52      | -19%   |
| NARCOTICS/Marijuana/Possess - Subsequent Offense  | M    | 2       | 2       | 0%     |
| NARCOTICS/Schedule I Or Ii Drugs/Possession   | F    | 5       | 0       | 500%   |
| NARCOTICS/Schedule Iii To Vi Drugs/Possess - Schedule Iv  | M    | 4       | 1       | 300%   |
| NARCOTICS/School Property, Etc., Possession/D/Distribute, Etc., Controlled Substance On School Property                 | F    | 0       | 4       | -400%  |
| NARCOTICS/Marijuana/Sell, Distribute, Pwi - Less Than 1/2 Ounce   | M    | 2       | 5       | -60%   |
| NARCOTICS/Marijuana/Sell, Distribute, Pwi - Over 1/2 Ounce But Not Over 5 Pounds  | F    | 0       | 5       | -500%  |
| NARCOTICS/Schedule I Or Ii Drugs - Distributi/Distribution (Provide/Sell Drugs To Be Resold By Others)                  | F    | 1       | 0       | 100%   |
| NARCOTICS/Schedule I Or Ii Drugs - Distributi/Possession W/Intent To Sell, Distribute, Etc.                             | F    | 0       | 1       | -100%  |
| NARCOTICS/Schedule I Or Ii Drugs - Distributi/Sale For Profit   | F    | 1       | 0       | 100%   |
| NARCOTICS/Schedule Iii To Vi Drugs/Sell, Distribute, Etc. Schedule Iii Drug - Not Anabolic Steroid                      | F    | 0       | 1       | -100%  |
| NARCOTICS/Marijuana - Synthetic (Cannabimimet/Possession Of Cannabimimetic Agent  | M    | 0       | 1       | -100%  |
| OBSCENITY /Pictures, Etc./Dissemination Of Videographic/Still Image With Intent To Harass, Etc.                         | M    | 0       | 2       | -200%  |
| OBSCENITY/Sexual Display/Masturbation, Actual Or Simulated In Public  | M    | 0       | 1       | -100%  |
| OBSCENITY/Indecent Exposure/Indecent Exposure   | M    | 0       | 1       | -100%  |
| OBSCENITY - CHILD PORN/Possession, Distribution, Reproduct/Possess Child Porn (First Offense)                           | F    | 0       | 2       | -200%  |
| OBSCENITY//Unlawful Filming, Videotaping Or Photographing Of Another  | M    | 0       | 2       | -200%  |
| ORDINANCE, CITY, OR COUNTY (FOR USE/Obstruction Of Justice/Fail To Show Id Or Identify Self To Po-<br>lice              | S    | 1       | 0       | 100%   |
| ORDINANCE, CITY, OR COUNTY (FOR USE/Larceny/Ordinance Violations Relating To Larceny                                    | S    | 45      | 36      | 25%    |
| ORDINANCE, CITY, OR COUNTY (FOR USE/Obstruction Of Justice/Ordinance Violations Relating To Ob-<br>struction Of Justice | S    | 0       | 2       | -200%  |
| ORDINANCE, CITY, OR COUNTY (FOR USE/Weapons/Ordinance Violations Relating To Weapons                                    | S    | 3       | 2       | 50%    |
| ORDINANCE, CITY, OR COUNTY/Disorderly Conduct/Ordinance Violations Relating To Disorderly Conduct                       | S    | 2       | 2       | 0%     |
| ORDINANCE, CITY, OR COUNTY/Traffic And Driving/Ordinance Violations Relating To Traffic And Driving                     | S    | 0       | 3       | -300%  |
| ORDINANCE, CITY, OR COUNTY/Alcohol/Ordinance Violations Relating To Other Alcohol Related Activity                      | S    | 0       | 1       | -100%  |
| ORDINANCE, CITY OR COUNTY/General/Ordinance Violation   | M    | 0       | 1       | -100%  |

Key: M misdemeanor; F, felony; S, status; J, justice; I, infraction

# DATA

## FY 2016 INTAKE OFFENSES

| COMPLAINT DESCRIPTION  | TYPE | FY 2016 | FY 2015 | CHANGE |
|--|------|---------|---------|--------|
| PAROLE, PROBATION, SUPERVISION VIOL/Juvenile & Domestic/Parole Violation                                     | S    | 2       | 6       | -67%   |
| TRAFFIC - PEDESTRIANS//Pedestrian Right-Of-Way-Violate   | I    |         | 2       | -100%  |
| PAROLE, PROBATION, SUPERVISION VIOL/Juvenile And Domestic/Probation Violation - Juvenile And Domestic        | S    | 127     | 152     | -16%   |
| PROTECTIVE ORDERS/Juvenile And Domestic/Preliminary Protective Order, Family Abuse                           | J    | 248     | 267     | -7%    |
| PROTECTIVE ORDERS/Juvenile And Domestic/Preliminary Protective Order   | J    | 5       | 1       | 400%   |
| PSYCHIATRIC INPATIENT TREATMENT (MI/Juvenile And Domestic/Emergency Admission                                | J    | 1       | 1       | 0%     |
| PSYCHIATRIC INPATIENT TREATMENT (MI/Juvenile And Domestic/Involuntary Commitment                             | J    | 0       | 1       | -100%  |
| SEXUAL ASSAULT/Aggravated Sexual Battery/Victim Under Age 13   | F    | 1       | 0       | 100%   |
| TRAFFIC - RECKLESS DRIVING//Endanger Life Or Limb  | M    | 2       | 4       | -50%   |
| TRAFFIC - RECKLESS DRIVING/Speeding/20 Mph Or More Over Speed Limit  | M    | 2       | 4       | -50%   |
| TRAFFIC - RECKLESS DRIVING/Speeding/Speed Over 80 Mph  | M    | 2       | 4       | -50%   |
| TRAFFIC - REGISTRATION, PLATES, ETC/Fraud/Registration, Title, Or Plates -Display Altered Or Fictitious      | M    | 0       | 1       | -100%  |
| TRAFFIC - REGISTRATION, PLATES, ETC//Operate Without Registration Or Title Or Plates                         | I    | 3       | 4       | -25%   |
| TRAFFIC - REGISTRATION, PLATES, ETC//Fail To Obtain Registration   | I    | 0       | 2       | -200%  |
| TRAFFIC - REGISTRATION, PLATES, ETC/Infraction/Expiration Of Registration, Expired Plates                    | I    | 1       | 2       | -50%   |
| ROBBERY//Business  | F    | 1       | 1       | 0%     |
| ROBBERY//Street  | F    | 13      | 11      | 18%    |
| ROBBERY//Carjacking  | F    | 0       | 1       | -100%  |
| SEX OFFENSES/Prostitution/Prostitution, Adultery Or Fornication For Money Etc.                               | M    | 1       | 0       | 100%   |
| TRAFFIC - SIGNS AND SIGNALS//Lane Control Signals, Fail To Obey  | I    | 0       | 1       | -100%  |
| TRAFFIC - SIGNS AND SIGNALS//Lane Markings, Fail To Obey   | I    | 2       | 1       | 100%   |
| TRAFFIC - SIGNS AND SIGNALS/Infraction/Fail To Obey Hov Lane Sign  | I    | 0       | 5       | -500%  |
| TRAFFIC - SIGNS AND SIGNALS//Fail To Obey Signs  | I    | 6       | 5       | 20%    |
| TRAFFIC - SIGNS AND SIGNALS//Stop Sign, Fail To Stop At  | I    | 2       | 2       | 0%     |
| TRAFFIC - SIGNS AND SIGNALS//Traffic Lights, Fail To Obey  | I    | 0       | 1       | -100%  |
| TRAFFIC - SIGNS AND SIGNALS//Yield Sign, Fail To Yield At  | I    | 0       | 1       | -100%  |
| PAROLE, PROBATION, SUPERVISION VIOL/Good Behavior/Suspended Sentence Violation - Misdemeanor                 | M    | 0       | 2       | -100%  |
| STATUS OFFENSES - CHINS SUPERVISION/Juvenile And Domestic/Runaway, Child In Need Of Supervision              | J    | 53      | 46      | 15%    |
| STATUS OFFENSES/Juvenile And Domestic/Services, Child In Need Of   | J    | 31      | 15      | 107%   |
| STATUS OFFENSES - CHINS SUPERVISION/Juvenile And Domestic/Truancy, Child In Need Of Supervision              | J    | 43      | 53      | -19%   |
| STALKING//Stalking With Intent To Cause Fear, Assault Or Injury  | M    | 1       | 0       | 100%   |
| TRESPASS/School Property/Church Property/Remain On School/Church Property,Bus After Being Told To Lea        | M    | 2       | 0       | 200%   |
| TRESPASS/Other/After Being Forbidden To Do So  | M    | 2       | 11      | -82%   |
| TRESPASS//Intent To Damage Property  | M    | 8       | 11      | -27%   |
| TRESPASS//School Property Or Church Property At Night  | M    | 4       | 0       | 400%   |
| VANDALISM, DAMAGE PROPERTY/Property/Unlawfully Deface Or Destroy Any Property Or Monument                    | M    | 0       | 1       | -100%  |
| VANDALISM, DAMAGE PROPERTY/Property/Intentionally, Damage/Destroy Any Property Or Monument, <\$10            | M    | 12      | 9       | 33%    |
| VANDALISM, DAMAGE PROPERTY/Public Building/Damage To Public Building, <\$1000                                | M    | 2       | 0       | 200%   |
| VANDALISM, DAMAGE PROPERTY/Vehicle/Vehicle, Aircraft Or Boat   | M    | 0       | 4       | -400%  |
| VANDALISM, DAMAGE PROPERTY/Property/Intentionally, Damage/Destroy Any Property Or Monument >=\$10            | F    | 3       | 0       | 300%   |
| VANDALISM, DAMAGE PROPERTY/Telephone, Radio/Damage Telephone Line, Etc. To Prevent Summoning Law Enforcement | M    | 1       | 0       | 100%   |
| WEAPONS/Concealed/Carry Concealed Weapon   | M    | 3       | 4       | -25%   |
| WEAPONS/Brandish/Brandish Or Point Firearm   | M    | 1       | 1       | 0%     |
| WEAPONS/Schools/Stungun, Knife, Other Than Firearm, Poss. On School Prop.                                    | M    | 8       | 4       | 200%   |
| WEAPONS/Minors/Possess Handgun Or Assault Rifle Under Age 18   | M    | 0       | 3       | -300%  |
| WEAPONS/Felon/Convicted Felon (Violent) Possess/Transport Firearm  | F    | 0       | 1       | -100%  |
| GRAND TOTALS AND FISCAL YEAR CHANGE RATE   |      | 2073    | 2183    | -5%    |

Data Source: Department of Juvenile Justice BADGE system.

Key: M misdemeanor; F, felony; S, status; J, justice; I, infraction

# DETENTION DIVERSION PROGRAM

The **Detention Diversion Program (DDP)** of the Court Services Unit reduces the number of youths placed in the Northern Virginia Juvenile Detention Home (NVJDH). The DDP has a client capacity of 14 and operates under the supervision of Robert Vilchez, Coordinator Arlington Gang Prevention Task Force. Juvenile Probation Officers are the primary source of referrals to the program. DDP counselors **Oswaldo Castillo** and **Carla Medina** maintain intense daily supervision and case management for youth placed in the program. DDP counselors conduct community outreach visits and consultations with other professionals to facilitate compliance of program rules.



Oswaldo Castillo, Carla Medina, DDP Counselors

## Key Trends:

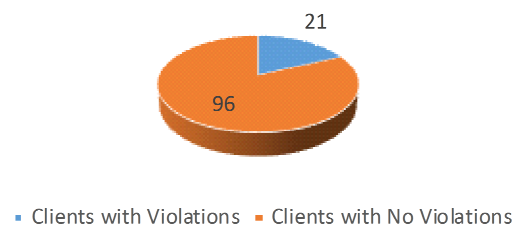
During FY 2016, the number of service days for clients in the program increased by 13 days from 4090 to 4103. During the same period, the number of clients served by the program decreased by 9 clients.

## Detention Diversion Program Demographics

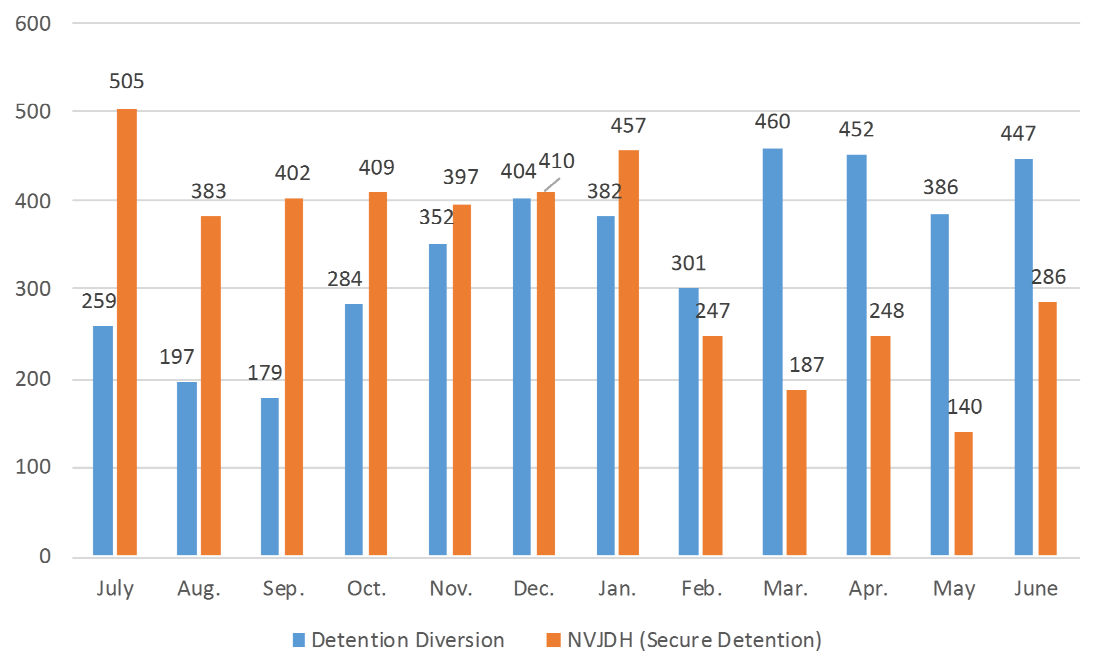
|                         | FY '16 |     | FY '15 |     |
|-------------------------|--------|-----|--------|-----|
| Youth Enrolled          | 117    |     | 126    |     |
| Minority Clients        | 97     | 83% | 47     | 37% |
| Males                   | 93     | 80% | 102    | 81% |
| Females                 | 24     | 20% | 24     | 19% |
| Arlington Placements    | 116    | 99% | 122    | 97% |
| Falls Church Placements | 1      | 1%  | 4      | 3%  |
| Service Days            | 4,103  |     | 4,090  |     |
| Utilization Rate*       | 56%    |     | 45%    |     |

\*Capacity 20 clients (7300 service days).

## FY 2016 DDP Outcomes



## Number and Type of Detention Days FY 2016



# JUVENILE DETENTION CENTER OF NORTHERN VIRGINIA

**Program Description:** The Juvenile Detention Center of Northern Virginia (JDC) is located in Alexandria, Virginia. It is a secure detention facility that serves adolescents who have been confined by the Juvenile and Domestic Relations District Court or a Circuit Court. The JDC is operated under the authority of a five member juvenile detention commission appointed by the three jurisdictions its serves: Arlington County, the City of Alexandria and the City of Falls Church. Ms. Patricia Romano and Dr. Alfred Taylor are the representatives appointed by the Arlington County Board and Mr. Alex Boston is the representative appointed by the Falls Church City Council. The JDC is certified to operate by the Virginia Department of Juvenile Justice.



## Population Served:

When ordered by the court, the JDC provides pre-dispositional detention services to juveniles who are alleged to have committed an act that would be a felony or Class 1 misdemeanor if committed by an adult. These juveniles also present a clear and substantial threat to the person or property of others or to themselves. The JDC also serves juveniles who have been found delinquent for a criminal offense and sentenced to the juvenile detention center. This includes sentences of up-to thirty days or, in some circumstances, the court may order juveniles to complete the six month post-dispositional program, called New Beginnings.

## Program Objective:

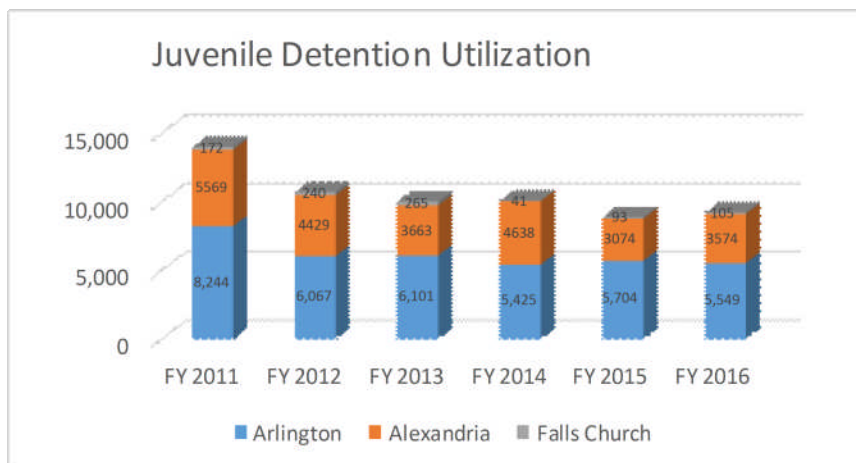
The Northern Virginia Juvenile Detention Center's mission is to create through example, policy, programs, and environment, a safe and secure setting that advocates good mental and physical health.

## Program Methodology:

JDC services include education, medical care, recreation, emergency psychiatric intervention, life skills training, visitation, and various volunteer programs. The behavior management program is based on positive reinforcement through a level system that allows detainees to earn additional privileges by demonstrating positive behaviors. Mental health services for Arlington youth at JDC are provided by a therapist with the Child and Family Services Division of the Arlington Department of Human Services. Alexandria City Public Schools provide teachers certified by the Virginia Department of Education to teach Math, English, Social Studies, Science, and Art. Instruction staff includes special education teachers, a literacy coach and an English language learner's teacher.

## Key Trends:

Utilization of juvenile detention by the Arlington County Juvenile Court has declined by 32% since FY 2011.



## Juvenile Court Diversion

There are certain intake complaints that the Code of Virginia allows a juvenile court intake officer to handle in an informal manner. A case is handled informally when no petition is filed and the juvenile is provided an opportunity to resolve the complaint outside of court. In these cases, the intake officer “diverts” the youth from the court to a program or service designed to address the underlying behaviors and attitudes that contribute to the offense. This process is known as **Diversion**.

The types of cases that frequently qualify for diversion are: *possession of marijuana, underage possession of alcohol, petit larceny, underage possession of tobacco, and Children in Need of Services or Supervision (CHINS)*.

*During FY 2016, 114 cases were diverted through the CSU’s diversion programs.*

### CSU Diversion Programs

- *Second Chance (Substance Abuse)*
- *Shoplifters (Petit Larceny)*
- *Tobacco (Possession)*
- *Truancy (School Attendance)*



## **Adult Probation Unit**

### ***Mission***

*To provide services for adult offenders, encourage family stability and protect the community through conducting investigations, supervising offenders and coordinating intervention services*



*(l. to r.) Naomi Cuffie-Brooks, Supervisor;  
Joanne Hamilton, Arnaldo Rosado, Kimberly Dexter, Rita Brewer, Adult Probation Officers*



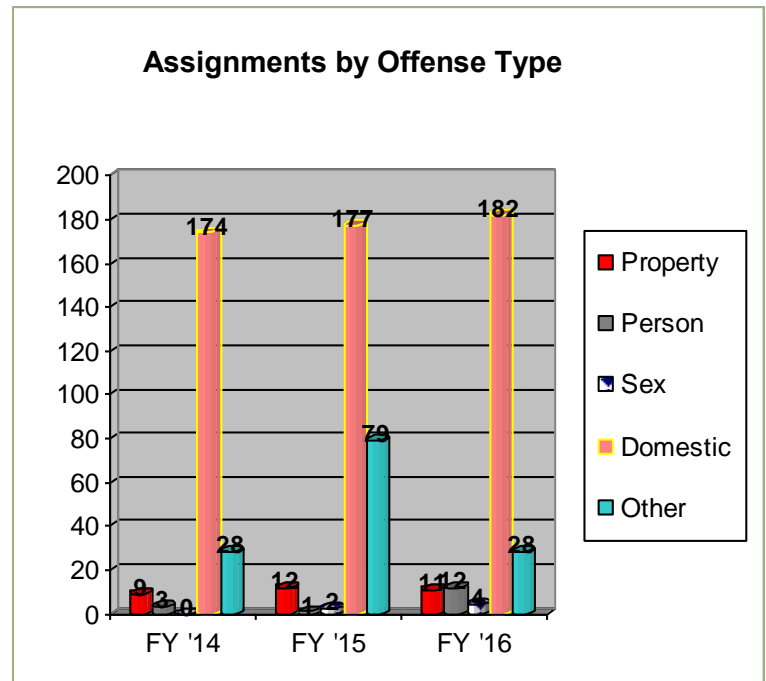
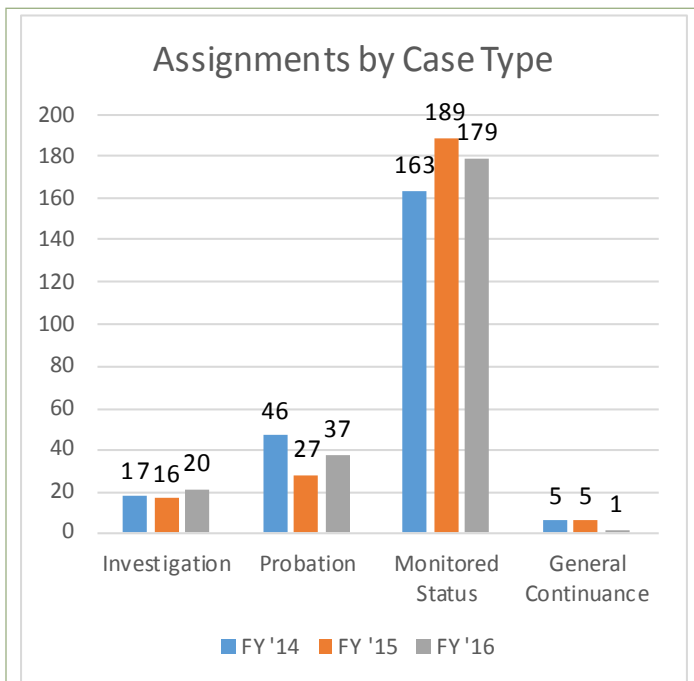
# ADULT PROBATION

The Adult Unit has seen an increase in the number of clients since 2016. The Adult Unit continues to work with an increasing proportion of dually-diagnosed clients, who experience problems with both mental health and substance abuse. In particular, the number of clients with opiate-related concerns has increase dramatically. In the previous 24 months, two clients under the supervision of the adult unit have overdosed from heroin.

In response, several members of the Adult Unit participated in Arlington’s Addiction Recovery Initiative. Two of the five adult probation officers will participate in the Arlington County Commonwealth Attorney Town Hall meeting on the drug problems in Arlington county and the CSU will have a resource table at this event. Probation Counselors collaborate closely with Behavioral Health Staff to ensure client compliance and service coordination.

The Adult Unit is also involved in the Risk-Needs-Responsivity committee. This committee is working on implementing a risk assessment tool which will address criminogenic needs (defined as an individual’s characteristics, traits, problems, or issues that directly relate to the individual’s likelihood to re-offend). Similar to the YASI used in the Juvenile Unit, this tool will help probation officers and service providers alike develop effective treatment plans and program recommendations.

| Assignments by Race & Ethnicity |        |        |
|---------------------------------|--------|--------|
|                                 | FY '15 | FY '16 |
| Male                            | 64%    | 73%    |
| Female                          | 36%    | 27%    |
| Black                           | 29%    | 32%    |
| Hispanic                        | 27%    | 32%    |
| White                           | 30%    | 22%    |
| Asian                           | 7%     | 12%    |
| Mid East                        | 6%     | 2%     |
| Other                           | 1%     | 1%     |



## Juvenile Probation

### *Mission*

*To provide the Court with investigation and supervision services which promote public safety, positive behavioral change, and accountability in youth and their families through prevention, competency development and correctional intervention*



Juvenile Unit (l. to r.) **Niasha John**, Probation Officer; **Laetitia Davis**, Parole Officer; **Shannan Moore**, Supervisor; **Kari Gividen**, **Jessica Cabrera**, **Tim Coffman**, Probation Officers.



Juvenile Unit (l. to r.) **Carmen Cornelison**, **Marvin Dickerson**, **Lisa Vega**, Probation Officers; **Faye Jones Majette**, Supervisor; **Evelyn Cochis**, **Amy Ashley**, Probation Officers; **Erick King**, Probation Officer (Supervisor as of March 2016).

# JUVENILE PROBATION SERVICES

The most frequently used disposition for those juveniles adjudicated guilty of a charge filed against them is probation supervision. The **Juvenile Probation Services Unit** strives to achieve a "balanced approach." This approach focuses on the principles of community protection (public safety), accountability, and competency development.

The Juvenile Probation Unit provides services for a wide range of cases including: delinquency, Children in Need of Services / Supervision (CHINS), emancipation petitions, transfers of juveniles to Circuit Court, requests for studies by other jurisdictions, child custody and visitation matters.

Investigations and reports are required for each CHINS and probation case. Social histories make up the majority of the reports that CSU personnel completes. These court-ordered investigations describe the social adjustment of the youth before the court and provide timely, relevant, and accurate data. This information helps the court select the most appropriate disposition for the case and provides the basis for the CSU to develop appropriate services for the juvenile and the family.

There are 11 juvenile probation officers and two supervisors who manage juvenile probation cases using YASI assessments, Motivational Interviewing, community programs and supervision as tools to help youth and families decrease or eliminate delinquent, dysfunctional behaviors and adopt socially acceptable, law abiding behavior. Each probation officer also coordinates a special program for the CSU.

The duties of the juvenile probation staff include case preparation, management, documentation, referral and coordination of client services. Probation officers visit clients at detention, schools, homes, state correctional facilities and residential placements. Staff also attend interagency planning meetings and court hearings.

## RISK ASSESSMENT COMPARISONS\*

### Arlington—17th CSU FY 2016

| Risk Classification                    | YASI Assessments | Percent |
|--|------------------|---------|
| <b>Low</b>                             | 40               | 37%     |
| <b>Moderate</b>                        | 62               | 57.4%   |
| <b>High</b>                            | 6                | 5.6%    |
| <b>Total</b>                           | 108              | 100%    |
| <b>Virginia Statewide Data FY 2016</b> |                  |         |
| Risk Classification                    | YASI Assessments | Percent |
| <b>Low</b>                             | 2,842            | 48.6%   |
| <b>Moderate</b>                        | 2,398            | 41%     |
| <b>High</b>                            | 608              | 10.4%   |
| <b>Total</b>                           | 5,848            | 100%    |

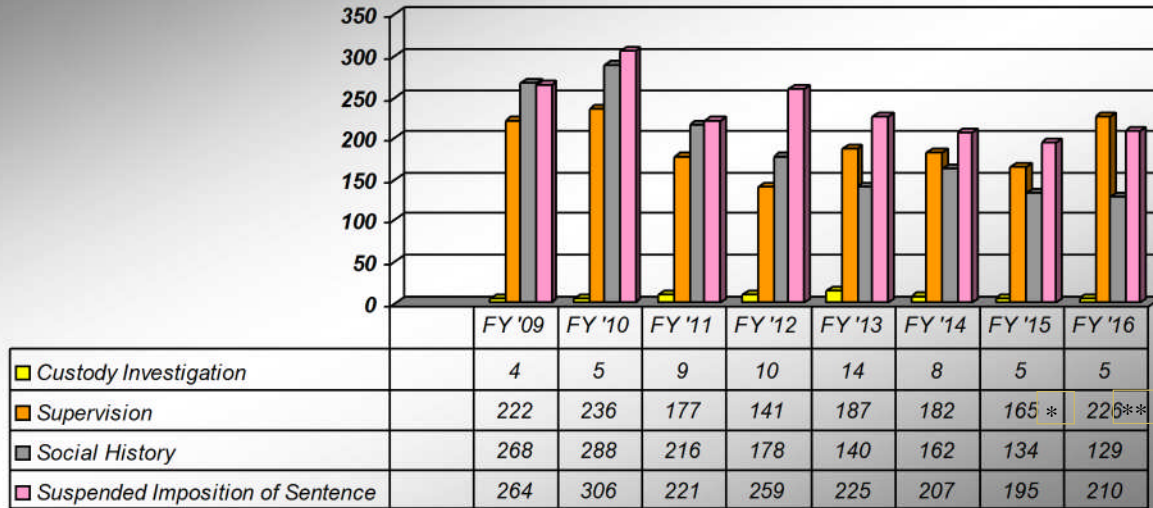
\*Source: DJJ Data Resource Guide FY 2016

All juveniles placed on probation supervision with Arlington County Juvenile Domestic Relations Court do not have the same likelihood of re-offending. Through the use of an empirically validated risk assessment instrument, Youth Assessment Screening Instrument (YASI), juveniles can be classified in different levels of risk. The judicious allocation of limited resources mandates that those juveniles representing the highest risk of safety to the community receive the most intensive supervision.

# DATA

## JUVENILE SERVICES AND DEMOGRAPHICS OF SUPERVISED CLIENTS

### Juvenile Case Assignments



\*FY '15 Supervision Data Source: Department of Juvenile Justice BADGE system, includes Falls Church.  
 \*\*FY '16 and after, Open Cases; FY '15 and prior years, New Cases.

### FY 2016 DEMOGRAPHICS    Juvenile Supervision Services

#### GENDER, RACE AND ETHNICITY:

|                    |     |     |
|--------------------|-----|-----|
| Male:              | 153 | 68% |
| Female:            | 73  | 32% |
| Black:             | 107 | 47% |
| White:             | 110 | 49% |
| Asian/Pacific Is.: | 9   | 4%  |
| Hispanic Origin:   | 75  | 33% |
| Non-Hispanic       | 151 | 67% |

#### AGE:

|                   |    |     |
|-------------------|----|-----|
| Twelve & under:   | 12 | 5%  |
| Thirteen:         | 8  | 4%  |
| Fourteen:         | 34 | 15% |
| Fifteen:          | 41 | 18% |
| Sixteen:          | 60 | 27% |
| Seventeen & over: | 71 | 31% |

#### FAMILY PROFILE:

|                  |     |     |
|------------------|-----|-----|
| 1 Parent:        | 149 | 66% |
| 2 Parents:       | 38  | 17% |
| Other relatives: | 19  | 8%  |
| Institution:     | 3   | 1%  |
| Foster Care:     | 11  | 5%  |
| Guardian         | 3   | 1%  |
| Alone            | 2   | 1%  |

#### GRADE:

|                                    |    |     |
|------------------------------------|----|-----|
| Seventh & Below:                   | 22 | 10% |
| Eighth:                            | 19 | 8%  |
| Ninth:                             | 46 | 20% |
| Tenth:                             | 61 | 27% |
| Eleventh:                          | 55 | 24% |
| Twelfth:                           | 21 | 9%  |
| Graduated/GED/No longer in school: | 8  | 4%  |
| Ungraded                           | 1  | >1% |
| Unknown                            | 3  | 1%  |

#### SCHOOLS:

|                                 |    |     |
|---------------------------------|----|-----|
| Gunston Middle School:          | 10 | 4%  |
| Kenmore Middle School:          | 9  | 4%  |
| Swanson Middle School:          | 12 | 5%  |
| Thomas Jefferson Middle School: | 3  | 1%  |
| New Directions:                 | 12 | 5%  |
| Career Center:                  | 6  | 3%  |
| Schools, Other Jurisdictions    | 50 | 22% |
| Langston High School Program    | 7  | 3%  |

|                             |    |     |
|-----------------------------|----|-----|
| HB Woodlawn High School     | 3  | 1%  |
| Wakefield High School:      | 43 | 19% |
| Washington-Lee High School: | 49 | 22% |
| Yorktown High School:       | 14 | 6%  |
| None                        | 1  | <1% |
| College                     | 2  | 1%  |
| Unknown                     | 4  | 2%  |

# COMMUNITY SERVICE

**Program Description / Objective:** Community service is a form of alternative sentencing. Through community service, offenders are invited to take responsibility for past actions and repair the damage done by giving back to the community and providing a service that enriches the lives of others. The program is administered by Offender Aid and Restoration of Arlington, Inc. (OAR). More information is available at [www.oaronline.org](http://www.oaronline.org)

**Population served:** The following types of clients are referred to OAR for assistance in completing community service:

- Individuals who are court-ordered to complete community service through the Arlington County or City of Falls Church Courts;
- Individuals who have been approved by a Judge to complete community service in lieu of paying their court costs;
- Individuals who are referred by their attorney to complete community service pre-trial.



**Program methodology:** Probation officers refer juveniles and adults to OAR when community service has been ordered by the court or is required as a condition of diversion. OAR maintains approved community service sites in which clients are placed. An OAR case manager interviews each client to discuss their case, review their requirements, and determine the most appropriate work site. OAR establishes a schedule with the client and worksite for completion of the number of hours required. Upon successful completion, OAR provides the client with a certificate of completion and notifies the court. When clients fail to meet the requirements, OAR sends a notice of violation to the court. This notice may be used by the probation officer to initiate further court action for non-compliance.

**Program Highlights:**

OAR partners with over 300 nonprofit and government agencies in the area to place our clients for community service work. Some examples of community service opportunities at local nonprofit organizations can include:

- Helping in a food bank
- Participating in a fundraising car wash
- Tutoring at an after school program
- Local community events (eg., Arlington County Fair, Air Force Cycling Classic, and Columbia Pike Blues Festival)
- Assisting the elderly
- Shelving books at the library
- Cleaning up a park

**Key Trends:**

**Juvenile**

|                  |             |
|------------------|-------------|
| Referrals        | 148         |
| Hours Completed  | 4,874       |
| Cases Violated   | 22          |
| Value @\$5.15/hr | \$25,101.10 |

**Adult**

|                   |             |
|-------------------|-------------|
| Referrals         | 17          |
| Hours Completed   | 1,238       |
| Cases Violated    | 1           |
| Value @\$20.91/hr | \$25,886.58 |



# JUVENILE PAROLE SERVICES

The parole officer handles cases involving juveniles who have been committed to the Department of Juvenile Justice and then released to parole supervision.



Bon Air Juvenile Correctional Center, Bon Air, VA, Virginia Department of Juvenile Justice



Beaumont Juvenile Correctional Center, Beaumont, VA, Virginia Department of Juvenile Justice

## Direct Care

Juveniles who have been committed to the Department of Juvenile Justice (DJJ) are placed in direct care status after being processed by the Central Admission Placement Unit (CAP). Direct care programs are responsible for the supervision of juveniles in a secure setting where they receive treatment, educational services and other special programs. These programs operate within juvenile correctional centers (JCC's). As of June 30, 2015, DJJ operated two JCC's (Beaumont JCC and Bon Air JCC). Juveniles can also be placed in the Community Placement Program (CPP) which allows them to be placed closer to their homes and families to help facilitate an easier transition post-release.

## Parole

After their release from direct care, juveniles return to their community on parole supervision. During this period, the youth is assigned a local parole officer. Planning for parole begins when the juvenile is first committed, and continues throughout direct care, until the juvenile is released on parole. Parole planning builds on the skills the juvenile learned while at the JCC and uses the balanced approach with an emphasis on community safety and competency development. Juveniles can be supervised on parole until their 21<sup>st</sup> birthday; however, the actual time of supervision is based on the level of risk, criminal history, and needs of the juvenile. Typical re-entry services include individual and family counseling, substance abuse treatment, vocational services, and specialized educational services. Some of these services are often provided by human service organizations under contract with the Department of Juvenile Justice.

Upon their release from the JCC, juveniles who are residents of other states return to their home state. Supervision of these youth is provided by their home jurisdiction under an agreement through the Interstate Compact on Juveniles (ICJ). The ICJ is an agreement between 49 states and the District of Columbia (except Georgia), that ensures effective supervision of juveniles. Under the agreement, if a juvenile violates the terms of his or her parole, s/he is returned to the jurisdiction where the offense occurred.

During fiscal year 2016, we added a Spanish speaking parole officer to assist juveniles in becoming productive members of the community. Parole also works in collaboration with the DJJ Regional Re-entry Specialist on job readiness skills for the local parolees.

|   |    |
|---|----|
| Youth Committed to Virginia Department of Juvenile Justice (FY '16) | 8  |
| Youth in Juvenile Correctional Centers (Direct Care)                | 11 |
| Youth on Parole Supervision (Community)                             | 8  |

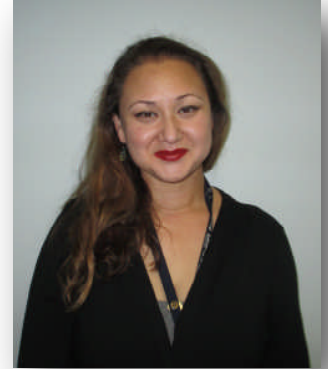


# PSYCHOLOGICAL SERVICES

**Program Description:** The **Psychological Services Team** provides direct and consultative psychological services to adult and juvenile offenders and their families.

**Program Objectives:**

- Provide the court with psychological and mental health assessments on individuals before the court for use in disposition of cases
- Improved psychosocial functioning among juveniles and adults before the court
- Provide probation officers and other CSU program staff with guidance on client behavioral and mental health and strategies for intervention
- Reduce the risk of further acting-out and delinquent behavior so that offenders may enjoy more adaptive and satisfying participation in the community.



**Dr. Mai Kindaichi,**  
*Court Psychologist*

**Population Served:** The Psychological Services team provided services to 71 program clients and 23 evaluation clients during FY 2016 (+1.4% from 70, and -36.1% in FY 2015).

**SERVICES FOR JUVENILE AND ADULT CLIENTS**

- Psychological Evaluations
- Family, Individual and Group Therapy

**SERVICES FOR CSU STAFF**

- Individual consultation on client mental health issues
- Training in mental health issues
- Identification and coordination of outside treatment and evaluation resources
- Training and supervision in group therapy

**SERVICES FOR ARGUS HOUSE, GIRLS' OUTREACH, YOUNG ACHIEVERS, AND AURORA HOUSE**

- Family and group therapy for program participants, as outlined in the respective program
- Resident treatment planning and regular case consultation for program staff
- Training in mental health and interventions to staff.
- Program development and assessment of program outcome.

**BILINGUAL SERVICES**

- Psychological Services contracted with a licensed clinical social worker to provide family therapy within the Argus House

**Key Trends:**

Continuing from FY 2015, the majority of the comprehensive psychological evaluations were conducted by the court psychologist. Evaluations which were referred to contracted psychologists were those pertaining to risk of sexual offense, competency to stand trial, or for youth whose circumstances benefited from specific expertise (e.g., younger than 8 years old, parental capacity, etc.). Additionally, more groups were conducted in FY 2016 on account of the addition of an extern, Ms. Amber Gibson, who had facilitated psychoeducational groups for the Argus House, Young Achievers Program, and Girls Outreach Program and conducted 3 evaluations under the supervision of the court psychologist

**Court-ordered Evaluations:** 23 ordered, 20 completed through the CSU.

Note: Some individuals were ordered multiple evaluations

**By Type:**

Comprehensive Psychological: 13  
Mental Health Evaluation: 4  
Risk of Violence: 1  
Juvenile Competency: 2  
Neuropsychological: 2  
Psychosexual: 1

**By Age:**

Juvenile: 20  
Adult : 2

## **Community-Based Programs**

### ***Mission***

*To supervise, encourage and counsel teens and their families to develop competencies needed to function as responsible, self-confident, goal-oriented individuals and law-abiding citizens*

***Andrew B. Ferrari ARGUS HOUSE***

***AURORA HOUSE***

***GIRLS' OUTREACH***

***YOUNG ACHIEVERS***

# ANDREW B. FERRARI ARGUS HOUSE

## Program Description

The **Andrew B. Ferrari Argus House** is a community-based group home that serves court-involved juvenile males, age 13 to 17, and their families. The residents, and often their parents, typically have issues related to authority problems, anger management, family dysfunction, interpersonal and emotional problems, lack of supervision at home, and poor school performance. These juveniles are at moderate risk for further court involvement, and supervision by a probation officer has not been sufficient to stop maladaptive behavior. In order to be placed in Argus House, the juvenile must be referred by his probation officer; he must live in Arlington County or the City of Falls Church; and he must not present a high risk to the community.



(L. to r.): **Chris Edmonds**, Group Home Manager; **Lloyd Murphy**, **Andre Taylor**, **Jessica Cabrera**, Group Home Counselor; **Arthur “Mac” McNeill**, Juvenile Program Coordinator; **Raymar Byrd**, Group Home Counselor; **Kim Zajac**, Relief Counselor; **Maria Caballero**, Mental Health Therapist. Not pictured, **Clarice Kelliebrew**, **Tyrell Chatman**, **Lawrence Wiley**, **Ebenezer Owiredu**, **Jennifer Sizer**, **Bridgette Fonville**, **David “Joey” Tinsley**, **Tina Asinugo**.

## Program Objective

While at Argus House, residents and their families work on improving communication, establishing a structure in the home, and resolving the individual social problems that led them into the court system. Parents must attend all meetings and are required to supervise their sons during home passes. They pay a monthly assessment to Arlington County, based on a sliding scale.

## Program Methodology

Peer group sessions, family sessions, and parent groups continue to be the primary means of dealing with long standing social problems of both the residents and their family members. Residents participate in ten to fifteen peer groups weekly to address social problems, to confront each other about poor choices, and to give constructive feedback about personal, family and school issues. When a client completes the Andrew B. Ferrari Argus House program, there are tangible results.

### Key Trends

|                         | FY '16 | FY '15 | FY '14 |
|-------------------------|--------|--------|--------|
| <b>Clients Served</b>   | 17     | 20     | 23     |
| <b>Success Rate</b>     | 100%   | 100%   | 100%   |
| <b>Utilization Rate</b> | 66%    | 76%    | 86%    |
| <b>Recidivism Rate</b>  |        |        |        |
| Local                   | 16.7%  | 18.2%  | 27.8%  |
| State                   | 46.1%  | 35.1%  | 36.6%  |

### Clients by Race

|        |   |     |
|--------|---|-----|
| Black: | 9 | 53% |
| White: | 7 | 41% |
| Asian: | 1 | 6%  |

### Clients by Ethnicity:

|           |   |     |
|-----------|---|-----|
| Hispanic: | 9 | 53% |
|-----------|---|-----|

### Clients by Age at Admission

|                 |   |     |
|-----------------|---|-----|
| 13 years of age | 3 | 17% |
| 14 years of age | 2 | 12% |
| 15 years of age | 3 | 17% |
| 16 years of age | 2 | 12% |
| 17 years of age | 7 | 42% |

### School attended at Time of Admission

|   |   |     |
|---|---|-----|
| New Directions Alternative School       | 3 | 17% |
| Wakefield High School                   | 4 | 24% |
| Washington-Lee High School              | 3 | 17% |
| Career Center                           | 2 | 12% |
| Swanson Middle School                   | 1 | 6%  |
| Gunston Middle School                   | 1 | 6%  |
| Thomas Jefferson Middle School          | 1 | 6%  |
| George Mason High School (Falls Church) | 2 | 12% |



## Program Description

Aurora House is a community-based residential counseling program serving adolescent females ages 13-17 who reside in Arlington County, the City of Falls Church, the City of Alexandria, and Fairfax County. Aurora House provides a highly structured, supervised therapeutic environment, that affords both the child and the parent the opportunity to work together on addressing issues, such as truancy, running away, family conflict and behavioral problems within the community. Clients are placed through the Juvenile and Domestic Relations District Court or the Department of Human Services.



## Program Objective

While at Aurora House, residents and their families use the multiple counseling services to identify the issues that contributed to the need for intervention and begin the work of developing new solutions that will assist the child in her return home. A unique component of the program is the accessibility to community resources. This allows the child and family to remain integrated with their home, family, community and school while working through the change process.

## Program Methodology

Aurora House provides individual, group and family counseling services that utilize elements of cognitive behavioral techniques and teach social and interpersonal relationship skills. Counseling services are most effective when accompanied by a behavioral management system and a highly structured living environment. Positive changes are encouraged and reinforced on a daily basis, providing tangible outcomes most notably by improvement in school attendance and performance.

## Key Trends

|                         | FY '14 | FY '15 | FY '16 |
|-------------------------|--------|--------|--------|
| <b>Clients Served</b>   | 15     | 17     | 24     |
| <b>Success Rate</b>     | 100%   | 100%   | 93%    |
| <b>Utilization Rate</b> | 53%    | 54%    | 78%    |
| <b>Recidivism* Rate</b> |        |        |        |
| Local                   | 18.2%  | 8.3%   | 10.0%  |
| State                   | 36.6%  | 35.1%  | 46.1%  |

### Clients by Age at Admission

|                 |   |     |
|-----------------|---|-----|
| 13 years of age | 3 | 13% |
| 14 years of age | 4 | 17% |
| 15 years of age | 5 | 21% |
| 16 years of age | 6 | 25% |
| 17 years of age | 6 | 25% |

### School Attended at Time of Admission

|                                   |   |     |
|-----------------------------------|---|-----|
| Kenmore Middle School             | 1 | 4%  |
| Centreville High School           | 1 | 4%  |
| Wakefield High School             | 6 | 25% |
| Washington-Lee High School        | 5 | 21% |
| Yorktown High School              | 4 | 17% |
| George Mason High School          | 1 | 4%  |
| TC Williams High School           | 1 | 4%  |
| New Directions Alternative School | 1 | 4%  |
| TAP                               | 1 | 4%  |
| Langston High School              | 2 | 8%  |
| Keller School                     | 1 | 4%  |

\*DJJ defines "recidivism" as a client's rearrest on a new criminal offense during the twelve months following her release from Aurora House.

### Clients by Race

|       |    |     |
|-------|----|-----|
| Black | 8  | 33% |
| White | 14 | 58% |
| Asian | 2  | 8%  |

### Clients by Ethnicity

|              |    |     |
|--------------|----|-----|
| Hispanic     | 6  | 25% |
| Non-Hispanic | 18 | 75% |

### Clients by Court Status

|            |    |     |
|------------|----|-----|
| CHINS      | 17 | 71% |
| Delinquent | 6  | 25% |
| CSA        | 1  | 4%  |



# GIRLS' OUTREACH

## Program Description

**Girls' Outreach** is an after school, evening reporting program that serves female clients between the ages of 13 and 17 who reside in Arlington County or Falls Church City. Girls are referred to the program through the Court, the schools or their families. The program offers a structured and intensely supervised environment during the high risk hours after school.

## Program Objectives

While attending **Girls' Outreach**, young ladies involved with the Court remain at home with their families as they address the issues which caused them to become Court-involved or at-risk. The program fosters self-esteem by building their social competencies.

It offers clients psycho-educational groups on a variety of topics such as pregnancy prevention, self-esteem, employability, anger management, social skills and healthy relationships. Structured activities include community service, therapeutic recreation and book club. Education is emphasized by mandatory study hall and tutoring. Personal responsibility is encouraged through weekly house meetings, goal setting and peer feedback..



**Girls' Outreach Staff** dress up as the characters from the Disney movie "Inside Out" to help their clients learn about their different emotions: anger, joy, sadness, disgust and fear: (l. to r) **Rick Strobach**, Deputy Director; **Pari-sa Bigdeli**, Outreach Counselor, **Tara Magee**, Program Coordinator; **Ro-mina Abawi**, Outreach Counselor and **MJ Harford**, Relief Counselor

## Key Trends

|                         | FY '14 | FY '15 | FY '16 |
|-------------------------|--------|--------|--------|
| <b>New Clients</b>      | 19     | 16     | 13     |
| <b>Total Clients</b>    | 28     | 25     | 21     |
| <b>Success Rate</b>     | 100%   | 100%   | 100%   |
| <b>Utilization Rate</b> | 66%    | 72%    | 65%    |
| <b>Recidivism* Rate</b> |        |        |        |
| <b>Local State</b>      | 11.1%  | 7.1%   | 20%    |
|                         | 41.3%  | 33.3%  | 45.7%  |

\*DJJ defines "recidivism" as a client's rearrest on a new criminal offense during the twelve months following his/her release from Argus House.

## Clients by Court Status

|                    |    |     |
|--------------------|----|-----|
| CHINS              | 12 | 57% |
| Delinquent         | 4  | 19% |
| Not Court Involved | 5  | 24% |

## Clients by Race

|       |    |     |
|-------|----|-----|
| Black | 4  | 19% |
| White | 15 | 71% |
| Asian | 1  | 5%  |
| Other | 1  | 5%  |

## Clients by Ethnicity

|              |    |     |
|--------------|----|-----|
| Hispanic     | 11 | 52% |
| Non-Hispanic | 10 | 48% |

## Clients by Age at Admission

|                 |   |     |
|-----------------|---|-----|
| 13 years of age | 0 | 0%  |
| 14 years of age | 6 | 29% |
| 15 years of age | 3 | 14% |
| 16 years of age | 7 | 33% |
| 17 years of age | 5 | 24% |

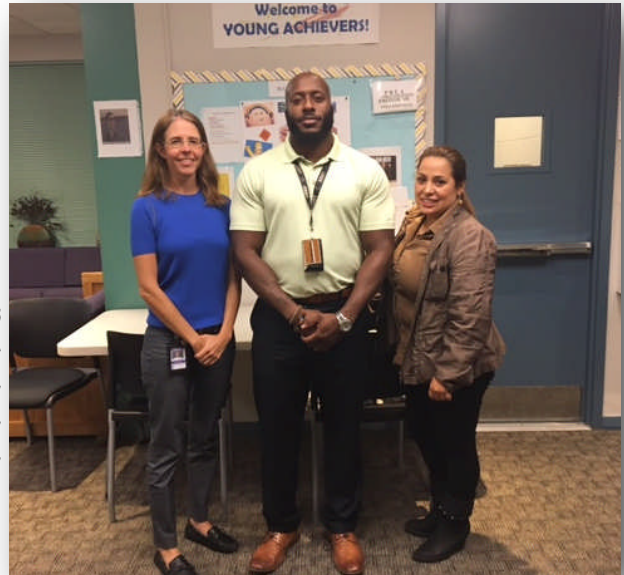
## School Attended at Time of Admission

|                                   |   |     |
|-----------------------------------|---|-----|
| Kenmore Middle School             | 1 | 4%  |
| Williamsburg Middle School        | 1 | 4%  |
| Arlington Career Center           | 0 | 0%  |
| New Directions Alternative School | 2 | 10% |
| Wakefield High School             | 5 | 24% |
| Washington-Lee High School        | 8 | 38% |
| Yorktown High School              | 1 | 4%  |
| George Mason High School          | 1 | 4%  |
| H. B. Woodlawn                    | 1 | 4%  |
| Langston Alternative High School  | 1 | 4%  |

# YOUNG ACHIEVERS

## Program Description

**Young Achievers Program** is an after school program for young males ages 13-17, who are involved in the Juvenile Court System. Young Achievers started as a pilot program in October of 2012 and due to its success, brought on a full-time Coordinator, Gretchen Abell MS, CSAC, in August of 2015. Since that time, the program has grown in the services and support it has to offer. The Young Achievers Program provides its youths with a highly structured and supportive environment to foster academic achievements, the skills and ability to make informed choices and manage social pressures and demands without negative consequences, and to have positive and respectful peer and adult relationships.



(l.to r.) **Gretchen Abell**, Young Achievers Coordinator; **Joseph Jones**, Counselor; **Maria Caballero**, Mental Health Therapist

## Program Objective

While attending the **Young Achievers Program**, the young men are afforded the opportunity to hone the skills necessary to avoid further court involvement. This is accomplished through consistent direct and honest feedback regarding behaviors and accomplishments. It is driven by an active and balanced schedule that incorporates healthy physical activities, supportive study hall, community service, and a myriad of psycho-educational groups. There is a strong component of accountability which is done through the point system and both positive and negative consequences.

## Key Trends

FY '16

New Clients 12  
Utilization Rate 100%

## Clients by Court Status

|                    |    |     |
|--------------------|----|-----|
| CHINS              | 2  | 16% |
| Delinquent         | 10 | 83% |
| Informal/Diversion | 0  | 0%  |

## Clients by Race

|       |   |     |
|-------|---|-----|
| Black | 4 | 33% |
| White | 8 | 66% |

## Clients by Ethnicity

|              |   |     |
|--------------|---|-----|
| Hispanic     | 7 | 58% |
| Non-Hispanic | 5 | 42% |

## Clients by Age at Admission

|                 |   |     |
|-----------------|---|-----|
| 13 years of age | 2 | 16% |
| 14 years of age | 1 | 8%  |
| 15 years of age | 1 | 8%  |
| 16 years of age | 5 | 42% |
| 17 years of age | 3 | 25% |

## School Attended at Time of Admission

|                            |   |     |
|----------------------------|---|-----|
| Kenmore Middle School      | 1 | 8%  |
| TJ Middle School           | 1 | 8%  |
| Gunston Middle School      | 1 | 8%  |
| New Directions             | 3 | 25% |
| Washington-Lee High School | 3 | 25% |
| Yorktown High School       | 3 | 25% |

## **SPECIAL PROGRAMS**

### ***Mission***

To provide effective, efficient, and quality services and programs, and interventions to juveniles, adults and families while addressing public safety, victim impact, and public accountability and competency development in conformance with court orders, Code of Virginia and standards set forth by the Department of Juvenile Justice.

### **Arlington Gang Task Force**

**Robert "Tito" Vilchez, Program Coordinator**

### **Basics of Safe Driving**

**Marvin Dickerson, Program Coordinator**

### **Bike Helmet**

**Colleen Zamar, Program Coordinator**

### **Project Open Book Program**

**Marvin Dickerson, Program Coordinator**

### **Intern and Volunteer Program**

**Erick T. King, Program Coordinator**

### **Public Relations**

**Tim Coffman, Program Coordinator**

### **School Probation Officer (SPC)**

**Carmen Cornelison, Program Coordinator**

### **Shoplifters Program**

**Lisa Vega, Program Coordinator**

### **Street Law**

**Oswaldo Castillo & Carla Medina, Program Coordinators**

### **Substance Abuse**

**Kimberly Dexter & Niasha John, Program Coordinators**

### **Training**

**Rita Brewer, Program Coordinator**

### **Truancy Awareness**

**Joanne Hamilton, Program Coordinator**

### **Truancy Program**

**Amy Ashley, Program Coordinator**







**1425 North Courthouse Rd. Suite 5100  
Arlington, Virginia 22201**

**Phone: (703) 228-4600 · Fax: (703) 228-3741**

<https://courts.arlingtonva.us/juvenile-domestic-relations/>

Prepared by:

Faye Jones and John Harpold, *Management Specialists, Sept. 2017*

Edited by:

Earl J. Conklin, *Director*

Rick Strobach, *Deputy Director*